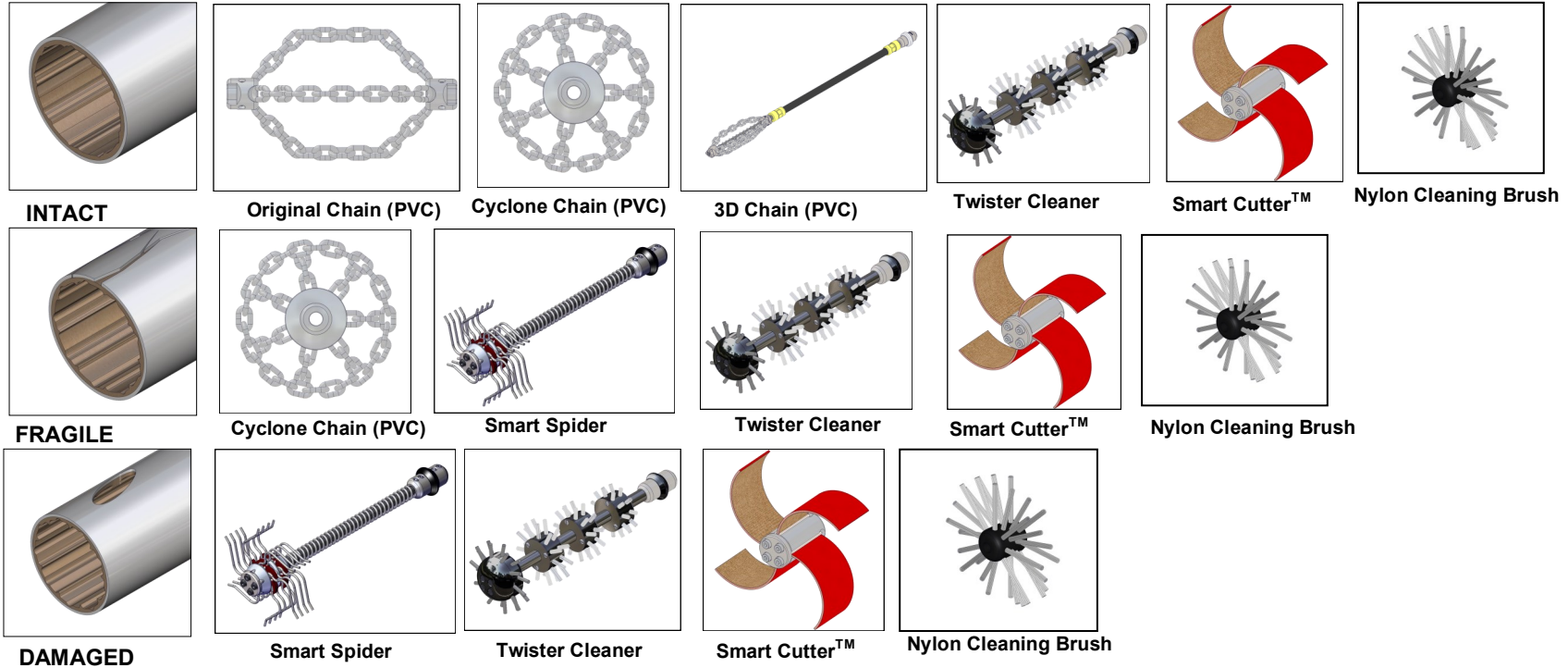
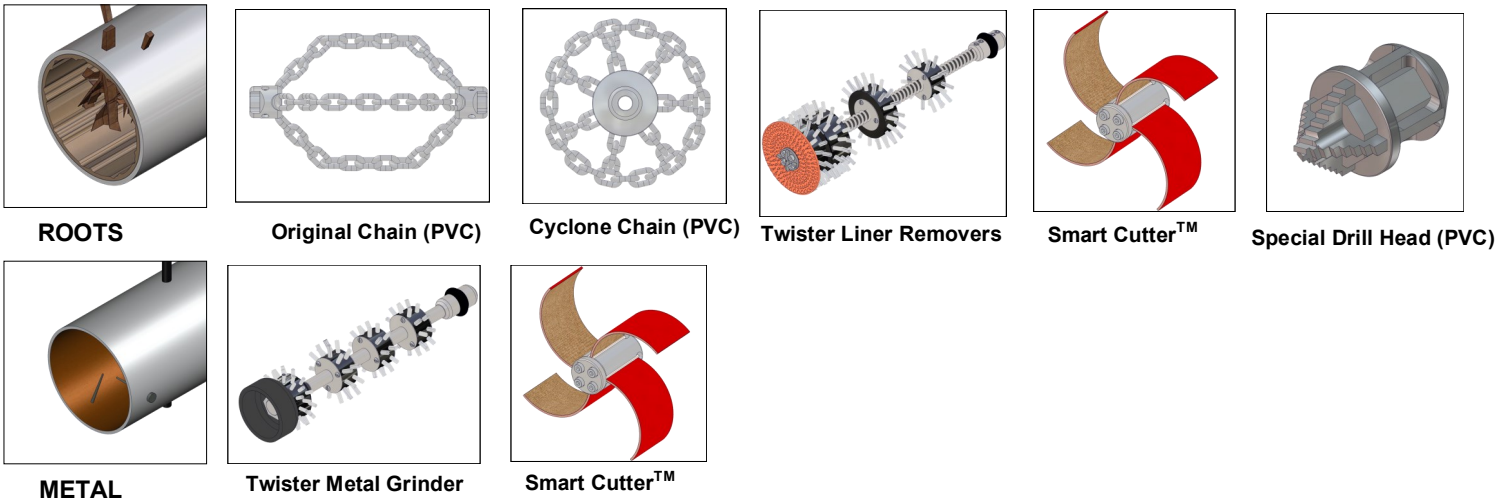


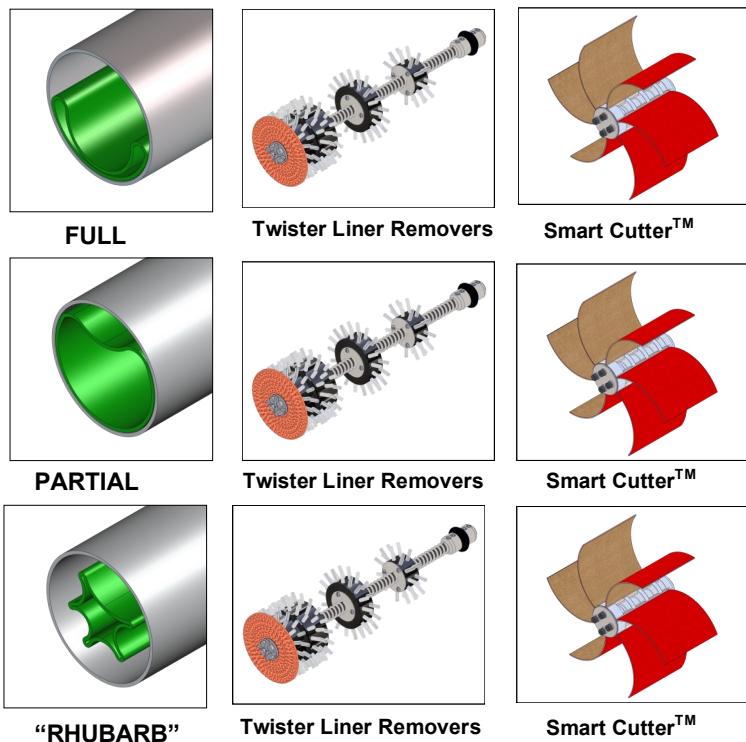
DESCALING



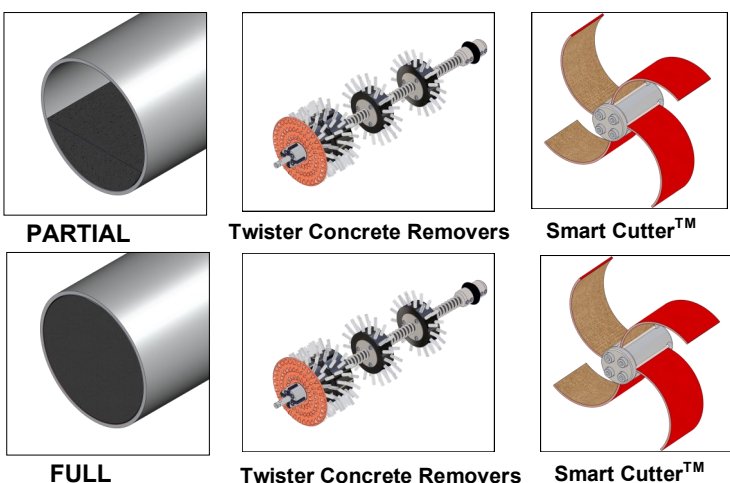
SPECIAL



COLLAPSED LINER



CONCRETE



### Maxi Miller

**Shaft Diameter:** 12mm (1/2")

**Range:** 30 metres (100 ft)

**Additional Extension:**\* 10 metres (32 ft)

**Recommended Range:** DN70-250 (3-10")

**Outer Casing:** Thick

Available Tools	Size Range
Original Chain (PVC)	DN70-250 (3-10")
3D Chain (PVC)	DN70-100 (3-4")
Cyclone Chain (PVC)	DN70-250 (3-10")
Smart Spider	DN100-150 (4-6")
Twister Metal Grinder	DN100 (4")
Twister Liner Remover	DN100-150 (4-6")
Twister Concrete Remover	DN100-150 (4-6")
Tiger Twister Liner & Concrete Remover	DN100-150 (4-6")
Smart Cutter™	DN70-225 (3-9")
Special Drill Head (PVC)	DN70-100 (3-4")
Nylon Cleaning Brush**	DN100-300 (4-12")

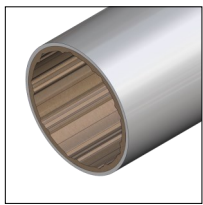
\* Shaft extension sold separately.

\*\* Nylon cleaning brushes should only be used for removing fine dust or soft blockages

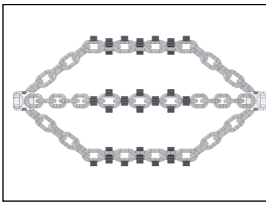
## MAXI MILLER

### Clay Pipes

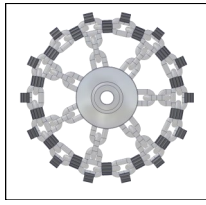
DES  
CAL  
ING



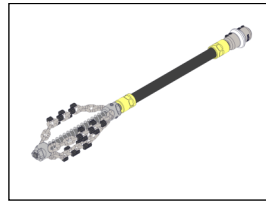
INTACT



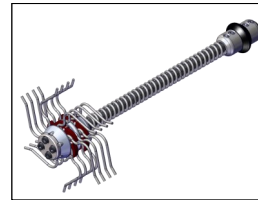
Original Chain



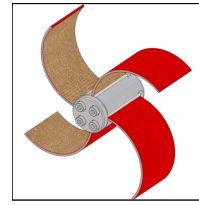
Cyclone Chain



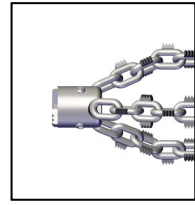
3D Chain (Premium)



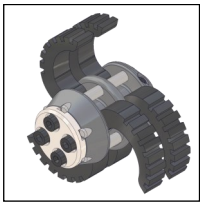
Smart Spider



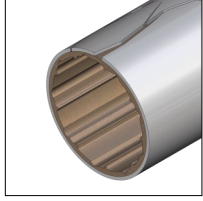
Smart Cutter™



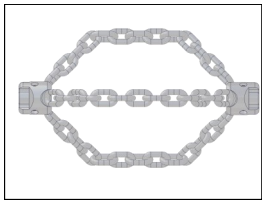
Tiger Drill Chain



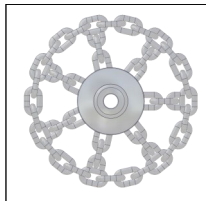
Mini Smart Sweeper



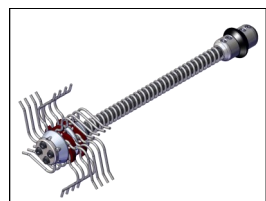
FRAGILE



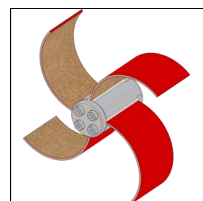
Original Chain (PVC)



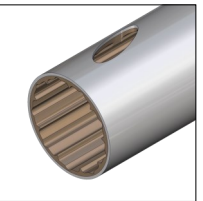
Cyclone Chain (PVC)



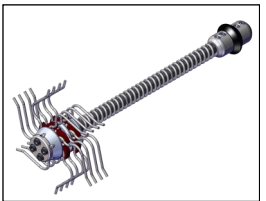
Smart Spider



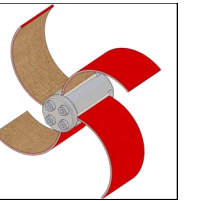
Smart Cutter™



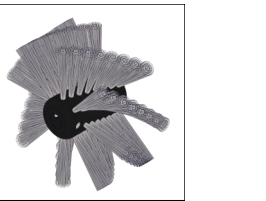
DAMAGED



Smart Spider



Smart Cutter™

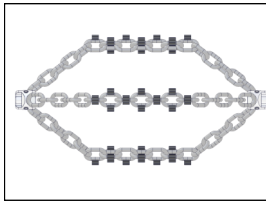


Wire Brush

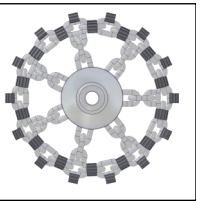
S  
P  
E  
C  
I  
A  
L



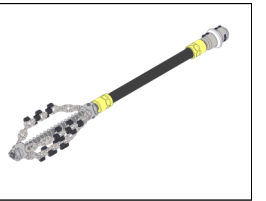
ROOTS



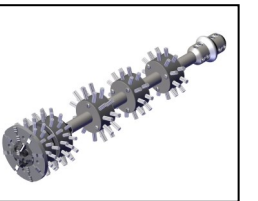
Original Chain



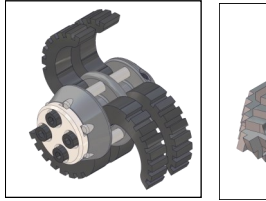
Cyclone Chain



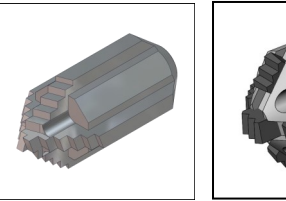
3D Chain (Premium)



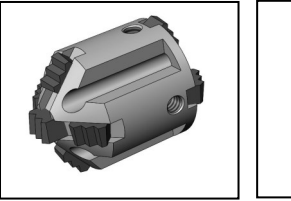
Twister Liner Removers



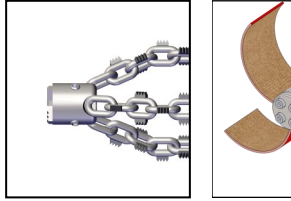
Mini Smart Sweeper



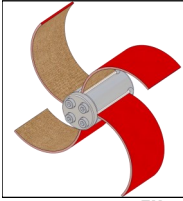
Special Drill Head



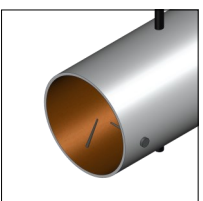
Tiger Bore



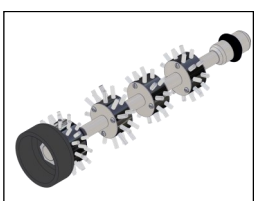
Tiger Drill Chain



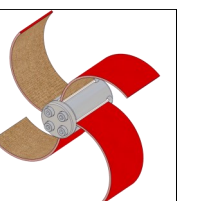
Smart Cutter™



METAL

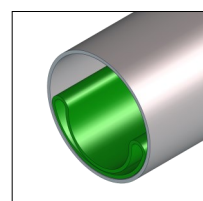


Twister Metal Grinder

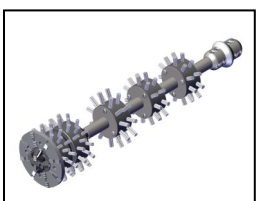


Smart Cutter™

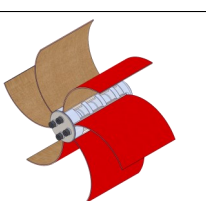
C  
O  
L  
L  
A  
P  
S  
E  
D  
  
L  
I  
N  
E



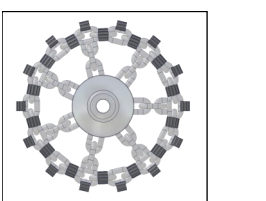
FULL



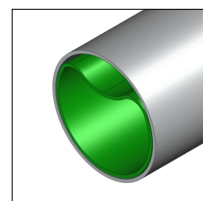
Twister Liner Removers



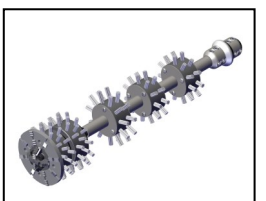
Smart Cutter™



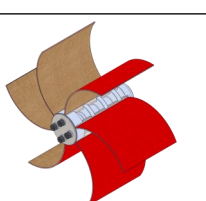
Cyclone (Premium/Tiger)



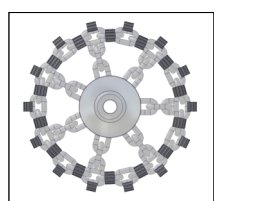
PARTIAL



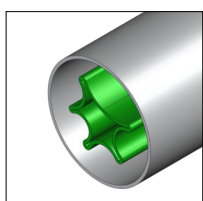
Twister Liner Removers



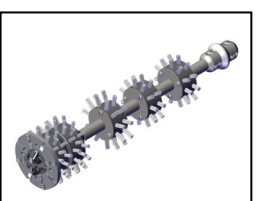
Smart Cutter™



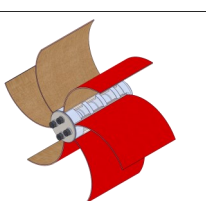
Cyclone (Premium/Tiger)



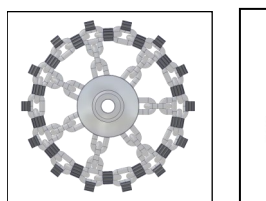
"RHUBARB"



Twister Liner Removers



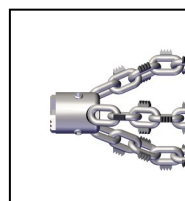
Smart Cutter™



Cyclone (Premium/Tiger)

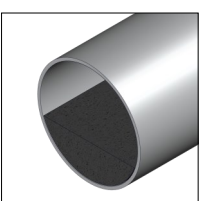


Tiger Bore

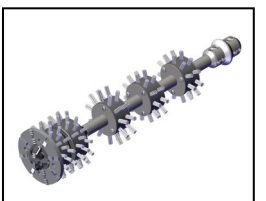


Tiger Drill Chain

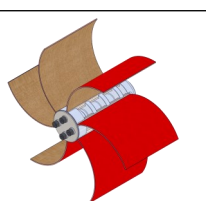
C  
O  
N  
C  
R  
E  
T  
E



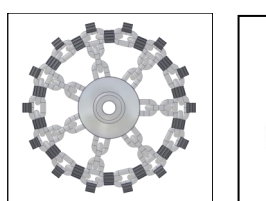
PARTIAL  
OR FULL



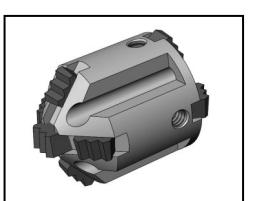
Twister Concrete Removers



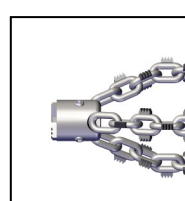
Smart Cutter™



Cyclone (Premium/Tiger)



Tiger Bore



Tiger Drill Chain

### Maxi Miller

Shaft Diameter: 12mm (1/2")

Range: 30 metres (100 ft)

Additional Extension:\* 10 metres (32 ft)

Recommended Range: DN70-250 (3-10")

Outer Casing: Thick

#### Available Tools

#### Size Range

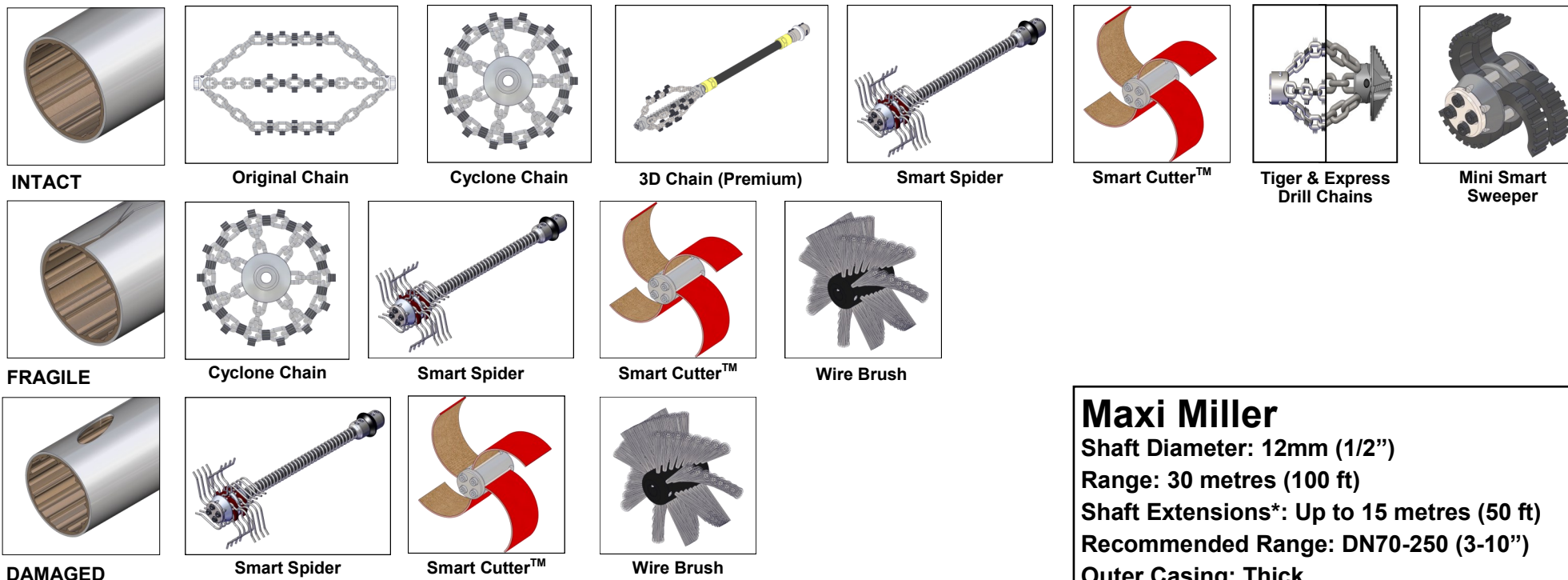
Original Chain (PVC)	DN70-250 (3-10")
Original Chain (Standard)	DN70-250 (3-10")
Original Chain (Premium)	DN70-250 (3-10")
Tiger Original Chain	DN70-250 (3-10")
3D Chain (Premium)	DN70-150 (3-6")
Cyclone Chain (PVC)	DN70-250 (3-10")
Cyclone Chain (Standard)	DN70-250 (3-10")
Cyclone Chain (Premium)	DN70-250 (3-10")
Tiger Cyclone Chain	DN70-250 (3-10")
Tiger Drill Chain	DN70-250 (3-10")
Smart Spider	DN100-150 (4-6")
Mini Smart Sweeper	DN100 (4")
Twister Metal Grinder	DN100 (4")
Twister Liner Remover	DN100-150 (4-6")
Twister Concrete Remover	DN100-150 (4-6")
Tiger Twister Liner & Concrete Remover	DN100-150 (4-6")
Smart Cutter™	DN70-225 (3-9")
Special Drill Head	DN70-100 (3-4")

Please refer to your user operating manual before undertaking any work. Ask your reseller or contact Picote for further information.

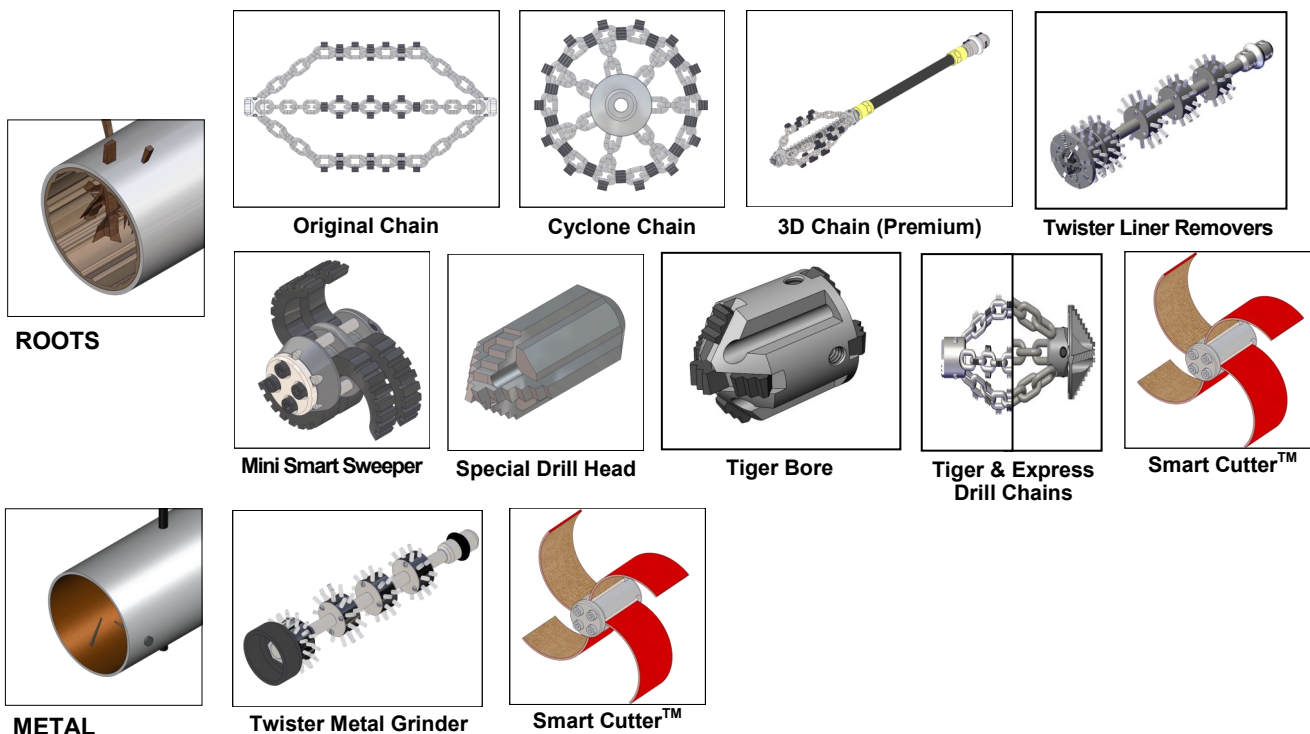
[www.picoteinstitute.com](http://www.picoteinstitute.com)



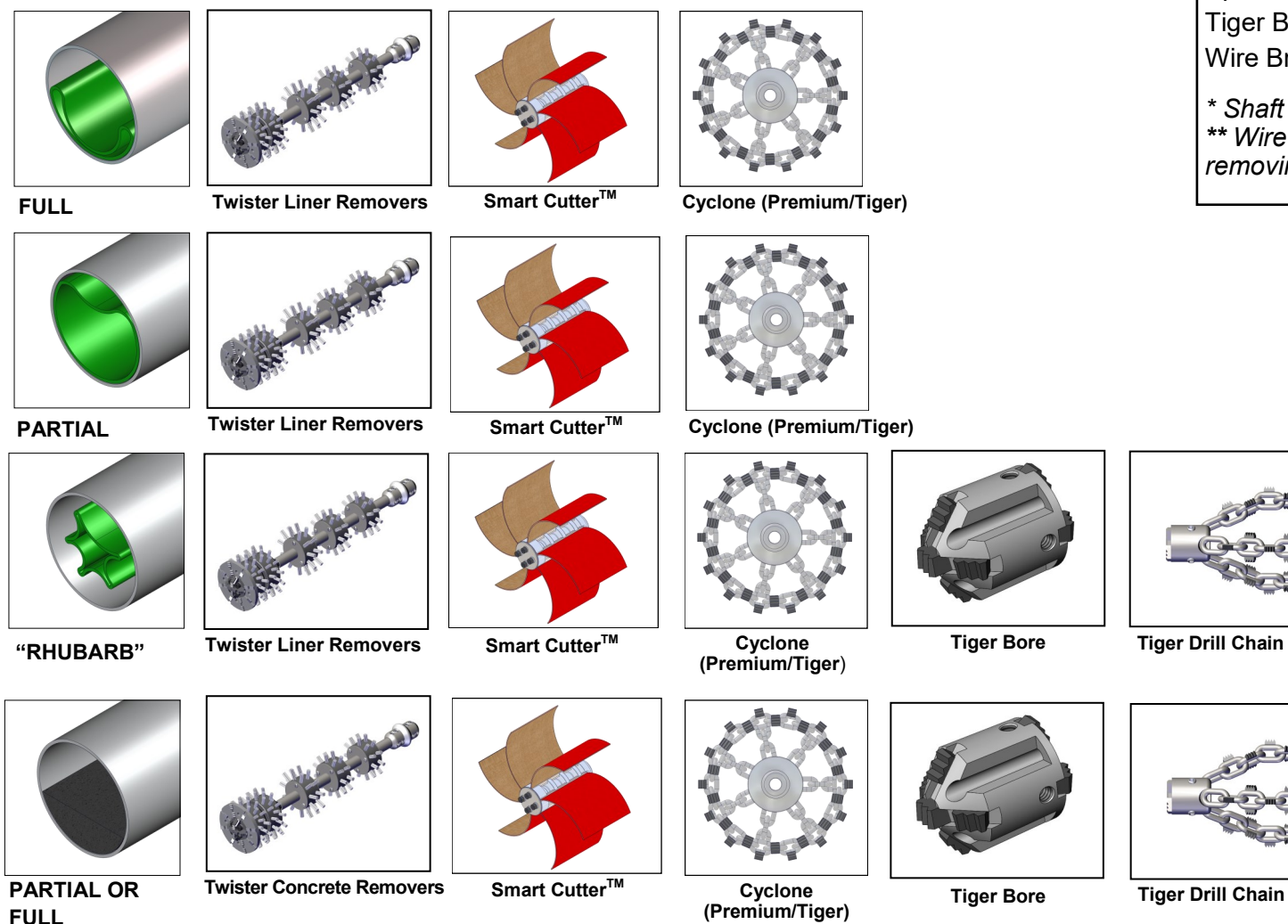
DESCALING



SPECIAL



COLLAPSED LINER



### Maxi Miller

Shaft Diameter: 12mm (1/2")

Range: 30 metres (100 ft)

Shaft Extensions\*: Up to 15 metres (50 ft)

Recommended Range: DN70-250 (3-10")

Outer Casing: Thick

#### Available Tools

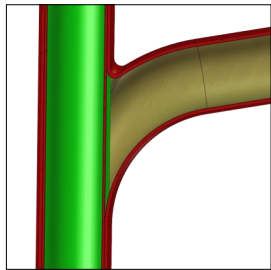
Original Chain (Standard)	DN70-250 (3-10")
Original Chain (Premium)	DN70-250 (3-10")
Tiger Original Chain	DN70-250 (3-10")
3D Chain (Premium)	DN70-150 (3-6")
Cyclone Chain (Standard)	DN70-250 (3-10")
Cyclone Chain (Premium)	DN70-250 (3-10")
Tiger Cyclone Chain	DN70-250 (3-10")
Tiger Drill Chain	DN70-250 (3-10")
Express Drill Chain	DN100-150 (4-6")
Smart Spider	DN100-150 (4-6")
Mini Smart Sweeper	DN100 (4")
Twister Metal Grinder	DN100 (4")
Twister Liner Remover	DN100-150 (4-6")
Twister Concrete Remover	DN100-150 (4-6")
Tiger Twister Liner & Concrete Remover	DN100-150 (4-6")
Smart Cutter™	DN70-225 (3-9")
Special Drill Head	DN70-100 (3-4")
Tiger Bore	DN70-100 (3-4")
Wire Brush**	DN100-300 (4-12")

\* Shaft extension sold separately.

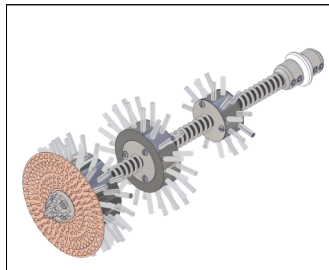
\*\* Wire brushes should only be used for removing fine dust or light mineral deposits

### PLASTIC PIPES

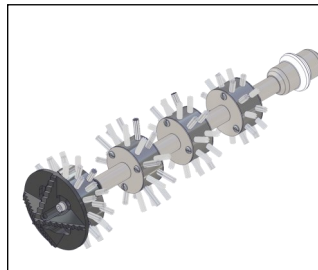
S  
T  
A  
N  
D  
A  
R  
D



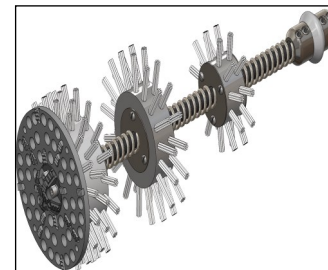
UNLINED



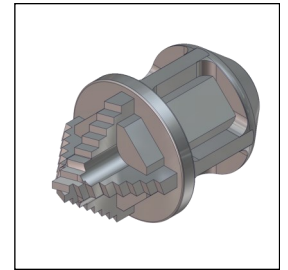
Twister (unlined pipes)



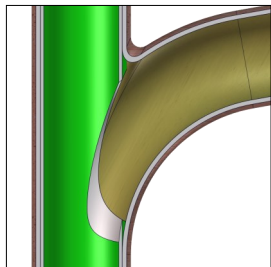
Twister Express (unlined pipes)



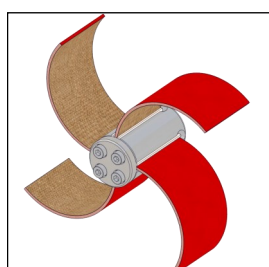
Tiger Twister (unlined pipes)



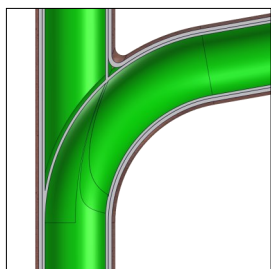
Special Drill Head (PVC)



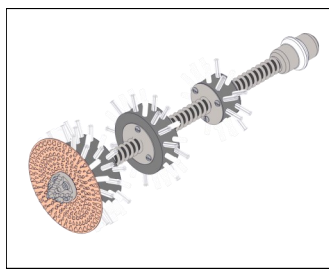
OPENED



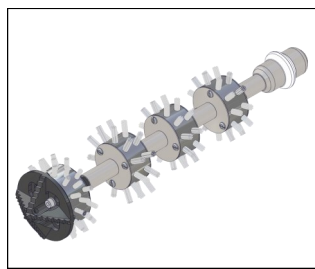
Smart Cutter™



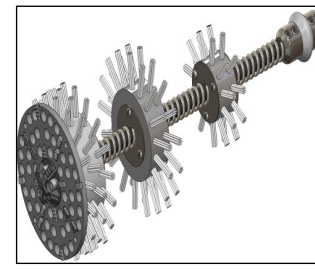
LINED



Twister (lined pipes)

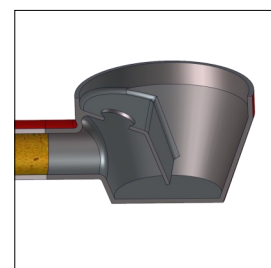


Twister Express (lined pipes)



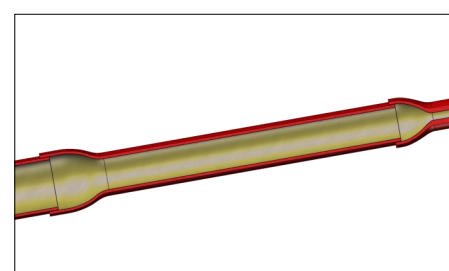
Tiger Twister (lined pipes)

S  
P  
E  
C  
I  
A  
L

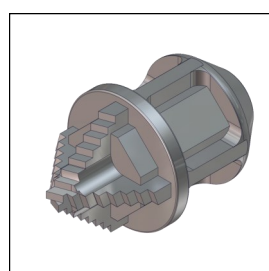


FLOOR DRAIN

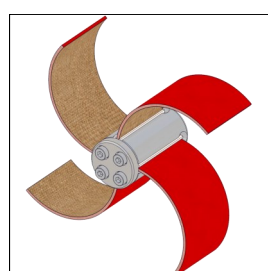
Refer to the Mini Cleaner / Mini Miller Range of Machines



SIZE CHANGE



Special Drill Head (PVC)



Smart Cutter™

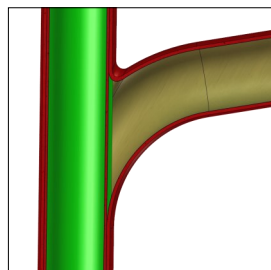
Maxi Miller	
Shaft Diameter: <b>12mm (1/2")</b>	
Range: <b>30 metres (100 ft)</b>	
Additional Extension:** <b>10 metres (32 ft)</b>	
Recommended Diameter Range : <b>DN70 - 250 (3 - 10")</b>	
Available Tools	Size Range
Twister	DN100 - 200 (4 - 8")
Twister Express	DN70 - 100 (3 - 4")
Tiger Twister	DN100 - 200 (4 - 8")
Smart Cutter™	DN70 - 250 (3 - 10")
Special Drill Head (PVC)	DN70 - 100 (3 - 4")
** Shaft extension sold separately	



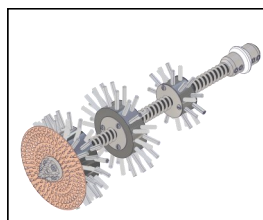
## MAXI MILLER

### CLAY PIPES

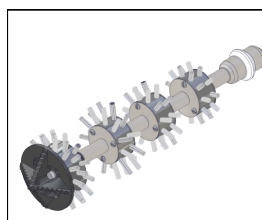
S  
T  
A  
N  
D  
A  
R  
D



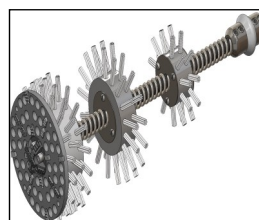
UNLINED



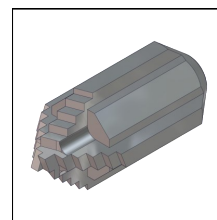
Twister  
(unlined pipes)



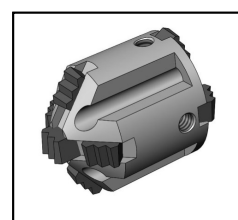
Twister Express  
(unlined pipes)



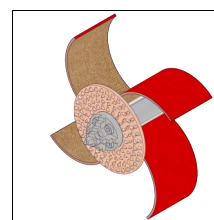
Tiger Twister  
(unlined pipes)



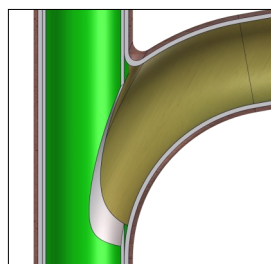
Special Drill Head



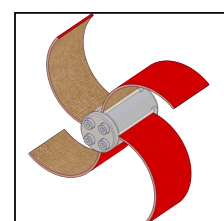
Tiger Bore



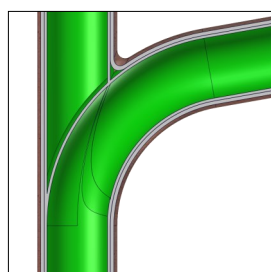
Smart Cutter™



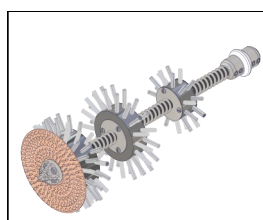
OPENED



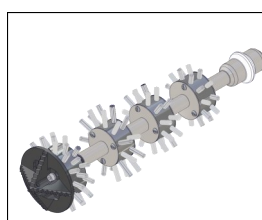
Smart Cutter™



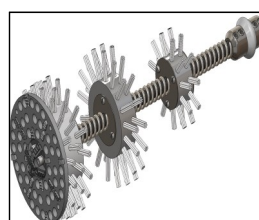
LINED



Twister  
(lined pipes)

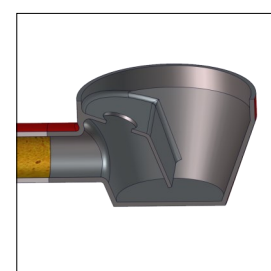


Twister Express  
(lined pipes)



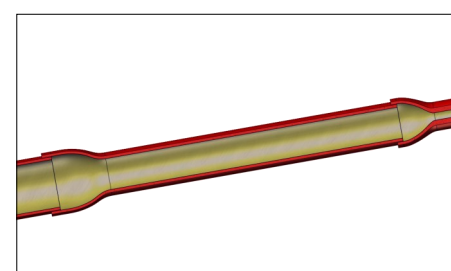
Tiger Twister  
(lined pipes)

S  
P  
E  
C  
I  
A  
L

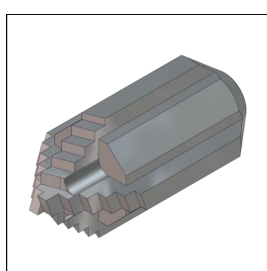


FLOOR DRAIN

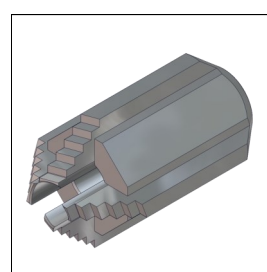
Refer to the Mini Cleaner / Mini Miller Range of Machines



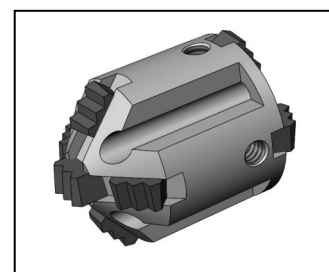
SIZE CHANGE



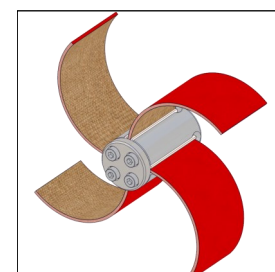
Special Drill Head



Special Drill Head (3D)



Tiger Bore



Smart Cutter™

#### Maxi Miller

Shaft Diameter: 12mm (1/2")

Range: 30 metres (100 ft)

Additional Extension:\*\* 10 metres (32 ft)

Recommended Diameter Range : DN70 - 250 (3 - 10")

#### Available Tools

#### Size Range

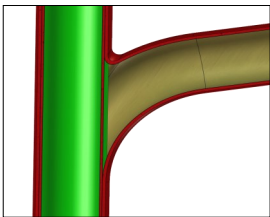
Twister	DN100 - 200 (4 - 8")
Twister Express	DN70 - 100 (3 - 4")
Tiger Twister	DN100 - 200 (4 - 8")
Smart Cutter™	DN70 - 250 (3 - 10")
Special Drill Head	DN70 - 100 (3 - 4")
Special Drill Head (3D)	DN70 - 100 (3 - 4")
Tiger Bore	DN70 - 100 (3 - 4")

\*\* Shaft extension sold separately

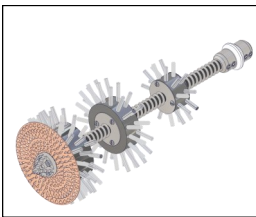
## MAXI MILLER

### CAST IRON PIPES

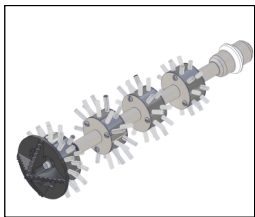
S  
T  
A  
N  
D  
A  
R  
D



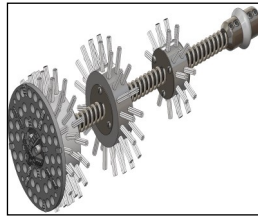
UNLINED



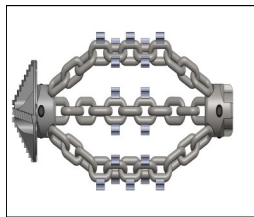
Twister  
(unlined pipes)



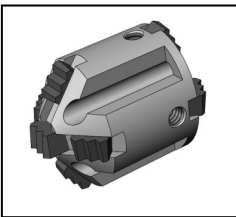
Twister Express  
(unlined pipes)



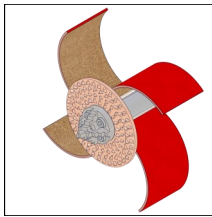
Tiger Twister  
(unlined pipes)



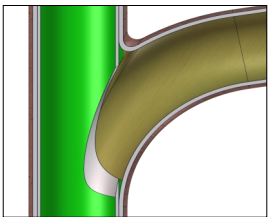
Express Drill Chain



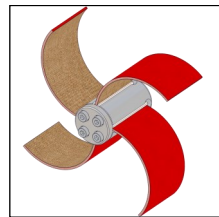
Tiger Bore or  
Special Drill Head



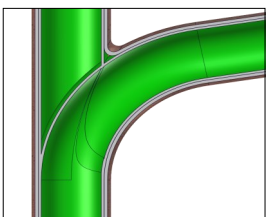
Smart Cutter™



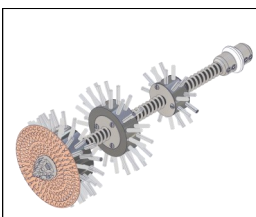
OPENED



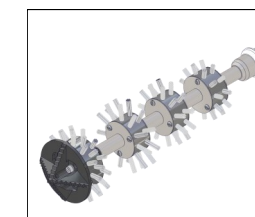
Smart Cutter™



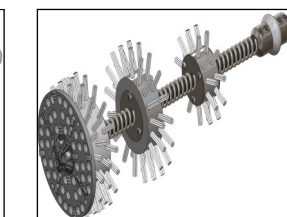
LINED



Twister  
(lined pipes)

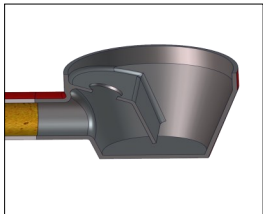


Twister Express  
(lined pipes)



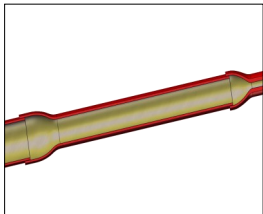
Tiger Twister  
(lined pipes)

S  
P  
E  
C  
I  
A  
L

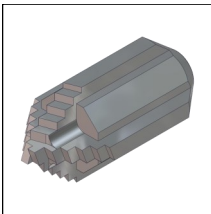


FLOOR DRAIN

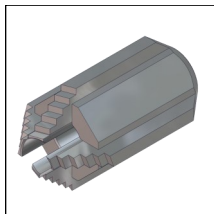
Refer to the Mini Cleaner / Mini Miller Range of Machines



SIZE CHANGE



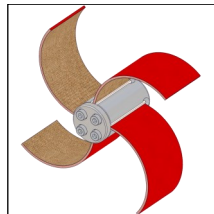
Special Drill  
Head



Special Drill  
Head (3D)



Tiger Bore



Smart Cutter™

#### Maxi Miller

Shaft Diameter: **12mm (1/2")**

Range: **30 metres (100 ft)**

Shaft Extension\*: Up to **15 metres (50 ft)**

Recommended Diameter Range: **DN70-250 (3-10")**

#### Available Tools

Available Tools	Size Range
Twister	DN100-200 (4-8")
Twister Express	DN70-100 (3-4")
Tiger Twister	DN100-200 (4-8")
Express Drill Chain	DN100-150 (4-6")
Smart Cutter™	DN70-250 (3-10")
Special Drill Head	DN70-100 (3-4")
Special Drill Head (3D)	DN70-100 (3-4")
Tiger Bore	DN70-100 (3-4")

\* Shaft extensions sold separately