

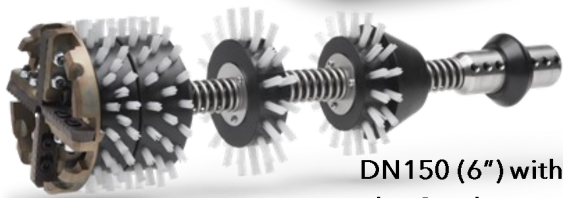
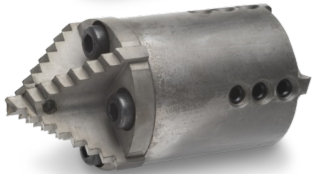
## THE SMART CRUSHER+

*For the Toughest CIPP Lining Removal Work*

DN100 (4") with  
Flat Crusher Head



DN70 (3") with  
Drill Head



DN150 (6") with  
Flat Crusher Head

The Smart Crusher+ is recommended for the tough job of removing failing CIPP linings to save you from time consuming and costly excavations.

No matter how skilled and diligent an installer is, there will inevitably be a lining project that fails to install properly. Thankfully the Smart Crusher's extra strong front stabilizing brushes, heavy duty shaft design, and robust cutting heads make it extremely reliable for working in difficult lining removal applications.

Two different cutting head options help to tackle the various types of lining collapses.

## USES AND BENEFITS

- Recommended for the toughest removal work paired with the Maxi Power+.
- Two swappable cutting heads to choose from depending on the type of collapse:
  - **Flat Crusher Head** - works best in situations where the collapse is either positioned in the center of the pipe or has fully collapsed to the bottom.
  - **Drill Head** - works best for partial collapses where the top of the lining has sagged.
- You may need to alternate between the different head styles on a project as a lining failure is often not uniform throughout.

### Smart Crusher+ Technical Specifications

Compatible Millers, Pipe Sizes, & Options:	
Millers:	Maxi Power+
Pipe Sizes*:	DN70, 100, 150, 200, & 225 3, 4, 6, 8, & 9"
Optimal Rotation Speed:	1000-1200 rpm
Head Options	Pipe Sizes
Flat Crusher Head	DN100, 150, 200, & 225 4, 6, 8, & 9"
Drill Head	DN70, 100, 150, 200, & 225 3, 4, 6, 8 & 9"
<i>*DN70 &amp; 100 (3 &amp; 4") recommended for straight pipes only.</i>	

## More Info/Guides/Technical Support:

- Visit [picoteinstitute.com](http://picoteinstitute.com) for e-learning courses, educational videos, quick guides, & manuals.
- For more information on products, spare parts, assembly and operation, consult the Smart Crusher+ Operation & Safety Manual or contact Picote Technical Support.
- For hands-on product training, Picote operates training centers in USA, UK, and Finland.

## PRODUCTS & SPARE PARTS

Smart Crusher+ Product List	
PN	Description
1370180070	Smart Crusher for DN70/75 (3") pipe (60mm/2 <sup>3</sup> / <sub>8</sub> ")
1370180100	Smart Crusher for DN100 (4") pipe (FDH 83mm/3 <sup>2</sup> / <sub>8</sub> ")
1370180150	Smart Crusher for DN150 (6") pipe (FDH 130mm/5 <sup>1</sup> / <sub>8</sub> ")
1370180200	Smart Crusher for DN200 (8") pipe (FDH 178mm/7")
1370180225	Smart Crusher for DN225 (9") pipe (FDH 203mm/8")
Spare Parts	
PN	Description
1300218100	Smart Crusher Front Drill Head DN100 (4") w/4 blades & 4 screws
1300218150	Smart Crusher Front Drill Head DN150 (6") w/4 blades & 4 screws
1300218200	Smart Crusher Front Drill Head DN200 (8") w/4 blades & 4 screws
1300218225	Smart Crusher Front Drill Head DN225 (9") w/4 blades & 4 screws
900000713	Smart Crusher Blade DN100 (4") 4pcs/package
900000663	Smart Crusher Blade DN150 (6") 4pcs/package
900000709	Smart Crusher Blade DN200 (8") 4pcs/package
900000710	Smart Crusher Blade DN225 (9") 4pcs/package
9990700026	Screws DN100 (4"): DIN912 M5x18 (8pcs)
1350000140	Screws DN150, 200, & 225 (6, 8, & 9"): DIN912 M6x20 (8pcs)