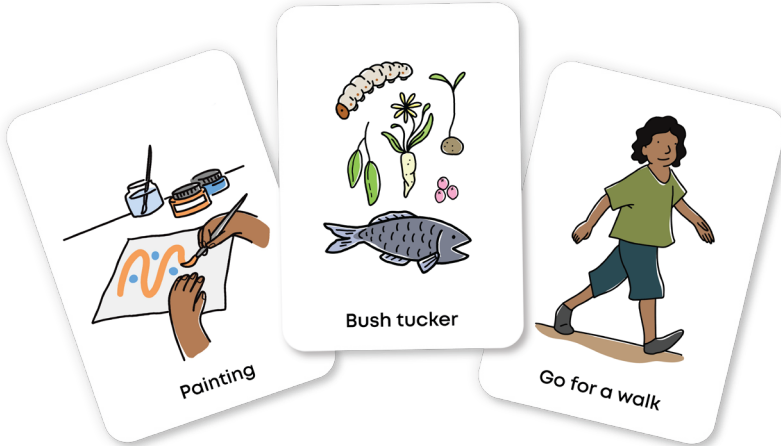




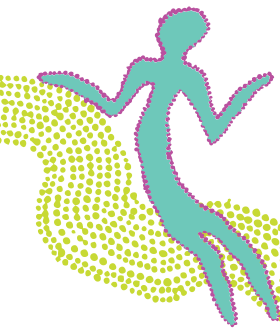
# Communication Cards

For Aboriginal and Torres Strait Islander people living with dementia.



---

Funded by the Australian Government  
A service led by HammondCare



## Tips for using the Communication Cards

1. Select the cards that are relevant for the person and attach them to the ring. Keep the selected cards from each category together and use the coloured corner to help you quickly find each card.
2. Select one card at a time and show it to the person individually. Avoid presenting cards together as this may be difficult for the person to interpret.
3. Use the relevant card to help the person understand what you are trying to communicate. For example, show the person the 'Pain' card when asking them about their pain. This approach needs to be done consistently and repeatedly to be effective.
4. Be patient and allow the person the time to understand the image and its meaning. People living with dementia may have lost the ability to read or understand what you are saying or may have reverted back to the language they used to speak when they were younger.

Dementia Support Australia (DSA) is a free nationwide service led by HammondCare, funded by the Australian Government. Our role is to improve the quality of life for people living with dementia and their carers. We do this by getting to know the person with dementia to understand the causes of changes in behaviour and work together with carers, care workers and local networks to work out the best plan. We keep in contact with carers and care workers while they support the person with dementia to live well in their own environment.

DSA offers free support 24 hours a day, 365 days a year throughout Australia. Contact DSA or refer someone with dementia to our service through:

 **1800 699 799**

 [dsa@dementia.com.au](mailto:dsa@dementia.com.au)

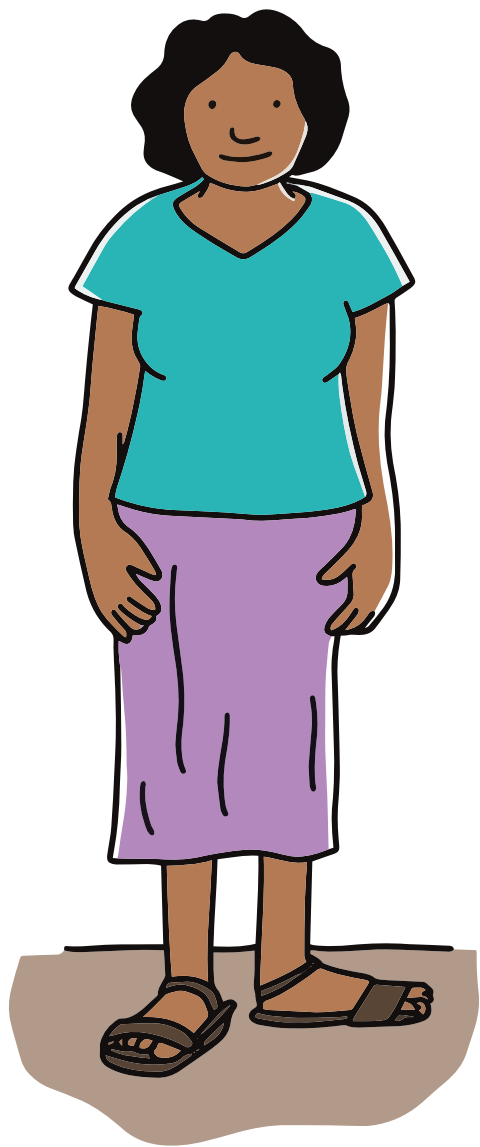
 [dementia.com.au](http://dementia.com.au)

# Contents

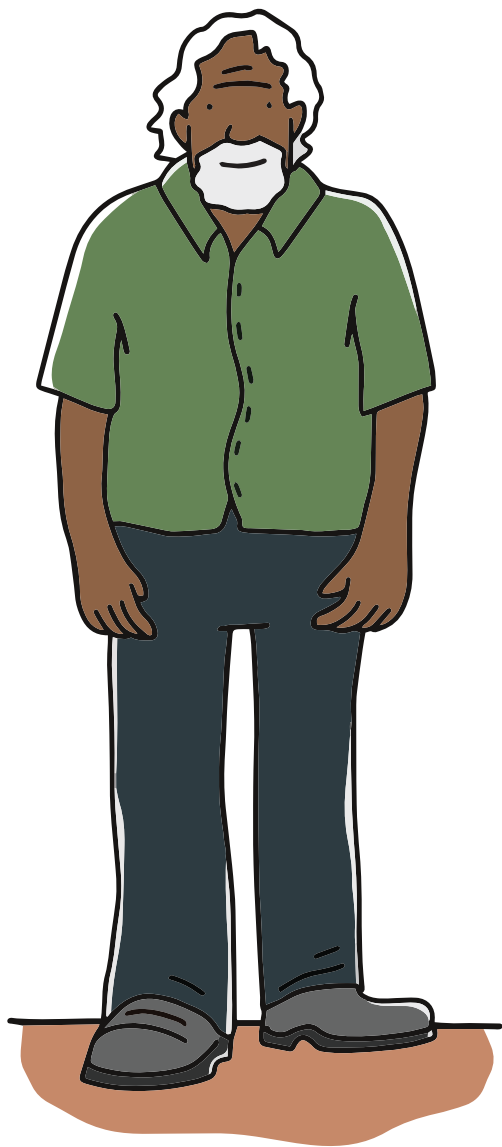
Family / Mob.....	4	Bush rub.....	33
Woman.....	5	Medication/ tablets.....	34
Man.....	6	Nurse.....	35
Yarning.....	7	Doctor.....	36
Dancing.....	8	Wrapping bandages....	37
Music.....	9	Hot.....	38
Go for a walk.....	10	Cold.....	39
Go to the garden.....	11	Like.....	40
Painting.....	12	Dislike.....	41
Weaving.....	13	Happy.....	42
Cowboy hat.....	14	Sad.....	43
Fire.....	15	Tired.....	44
Hot drink.....	16	Sick.....	45
Cold drink.....	17	Worry.....	46
Water.....	18	Hungry.....	47
Food.....	19	Thirsty.....	48
Fruit.....	20	Go to the toilet.....	49
Bush tucker.....	21	Country.....	50
Witchetty grub.....	22	Beach.....	51
Shower.....	23	Meeting place.....	52
Washing.....	24	Clinic / hospital.....	53
Toilet.....	25	Bedroom.....	54
Sleep.....	26	Snake.....	55
Getting dressed.....	27	Kangaroo.....	56
Brushing teeth.....	28	Emu.....	57
Glasses.....	29	Fish.....	58
Hearing aid.....	30	Dog.....	59
Pain.....	31	Yes.....	60
Bush medicine.....	32	No.....	61



**Family / Mob**



Woman



Man



# Yarning



Dancing





Music



Go for a walk



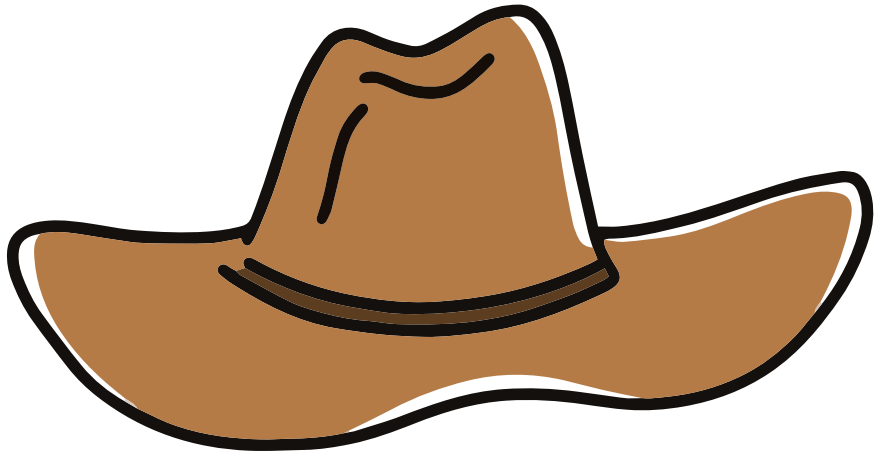
Go to the garden



Painting



Weaving



Cowboy hat



Fire

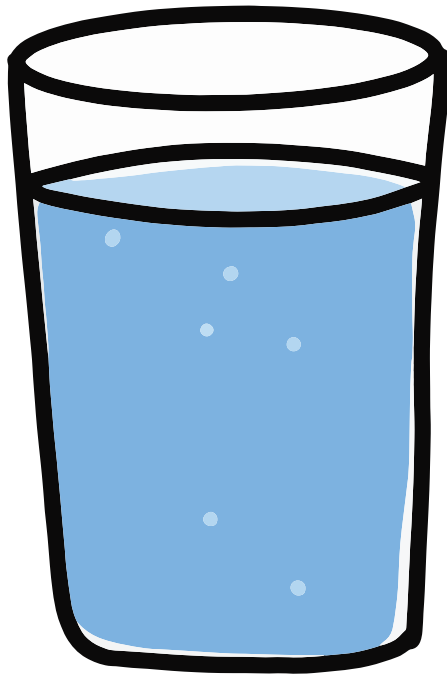


Hot drink

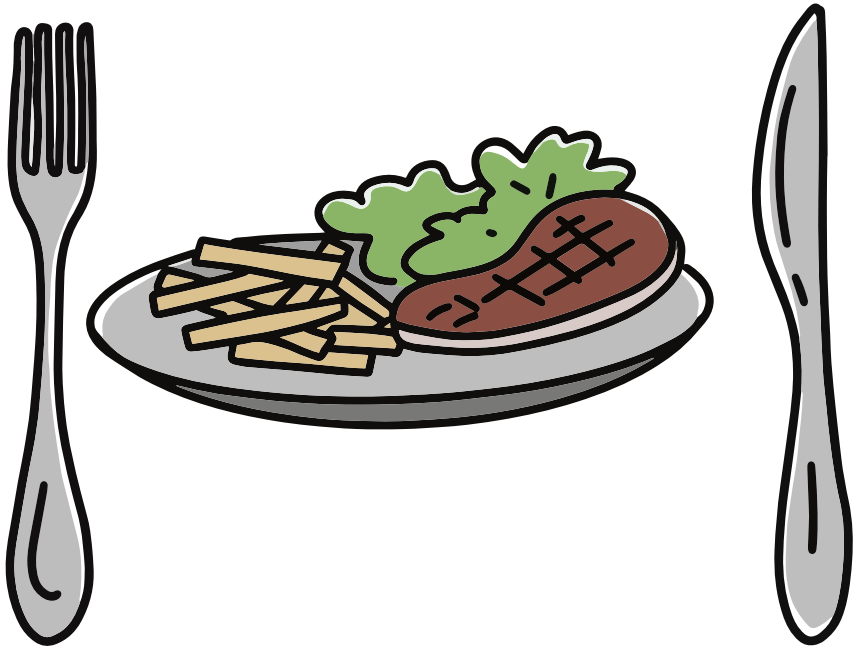




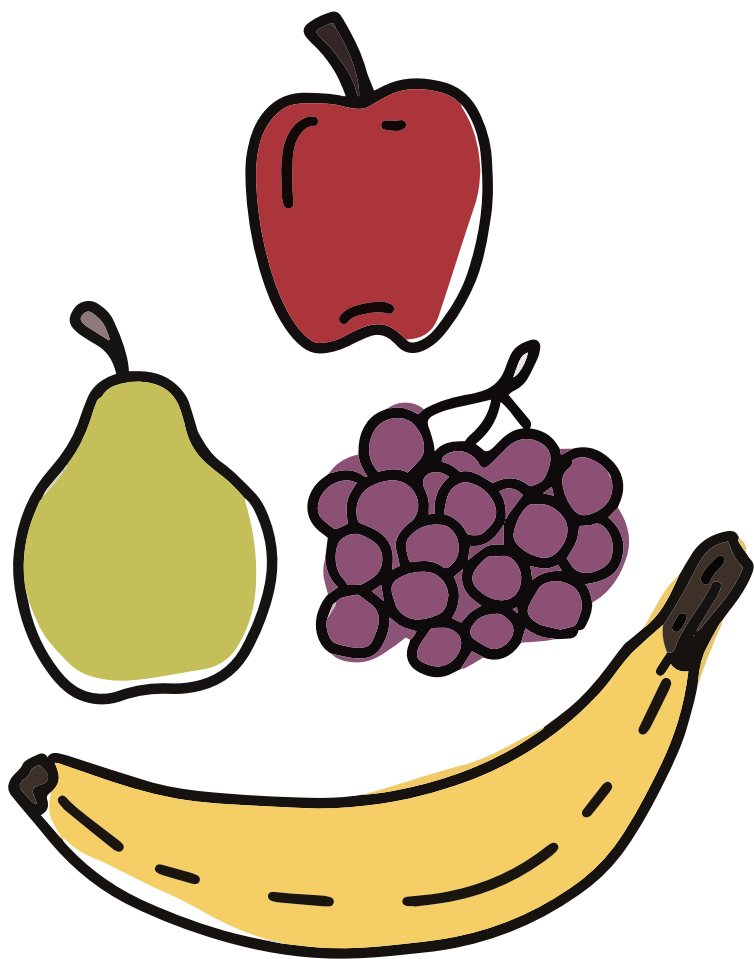
Cold drink



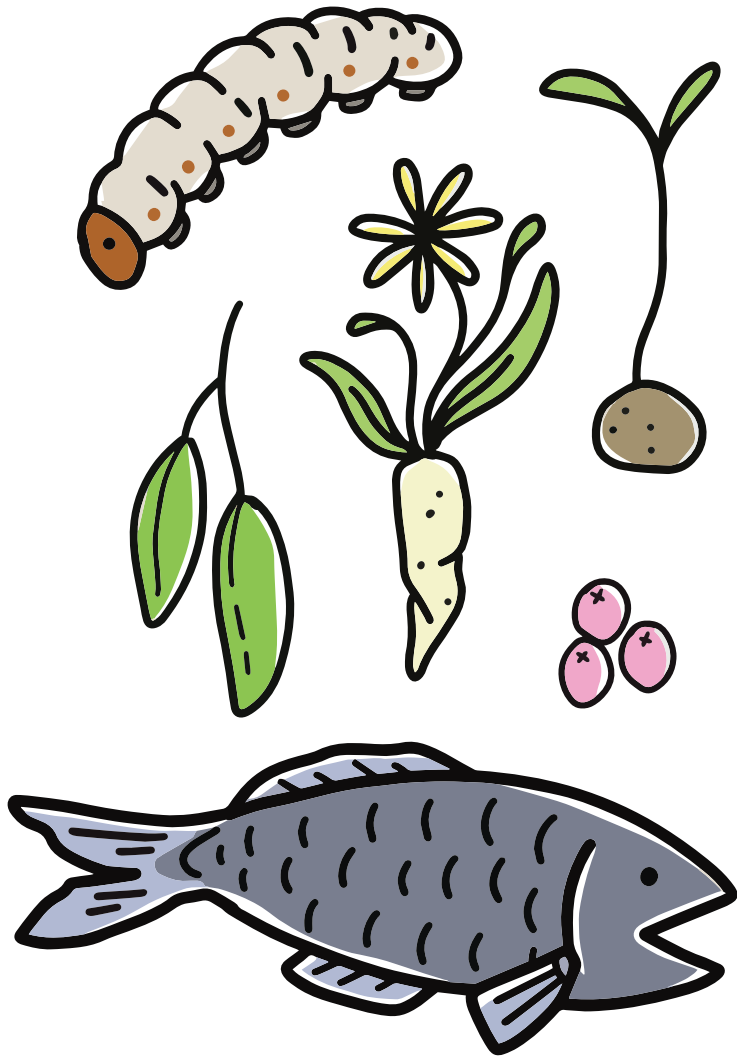
Water



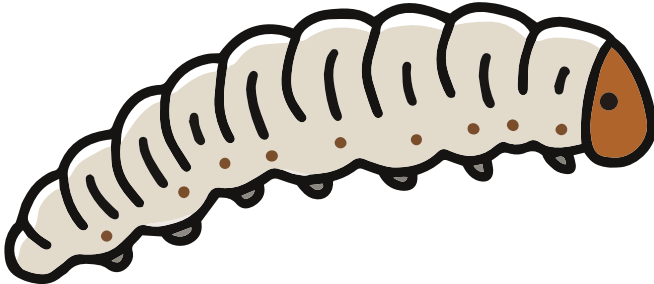
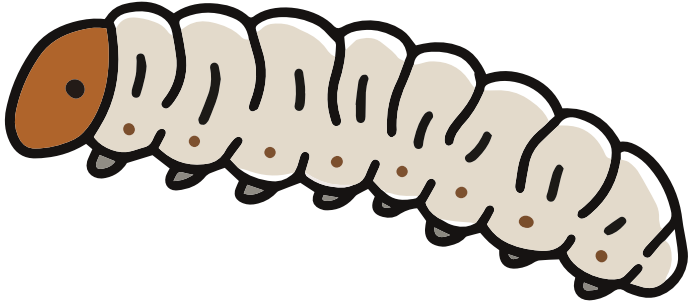
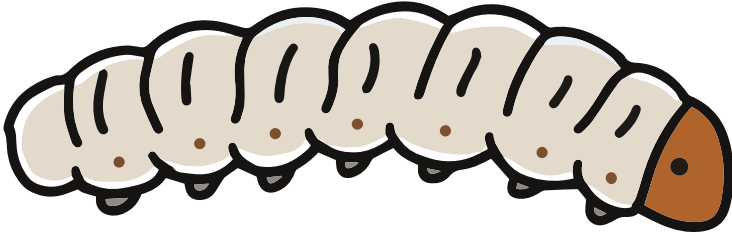
Food



Fruit



Bush tucker



Witchetty grub



Shower

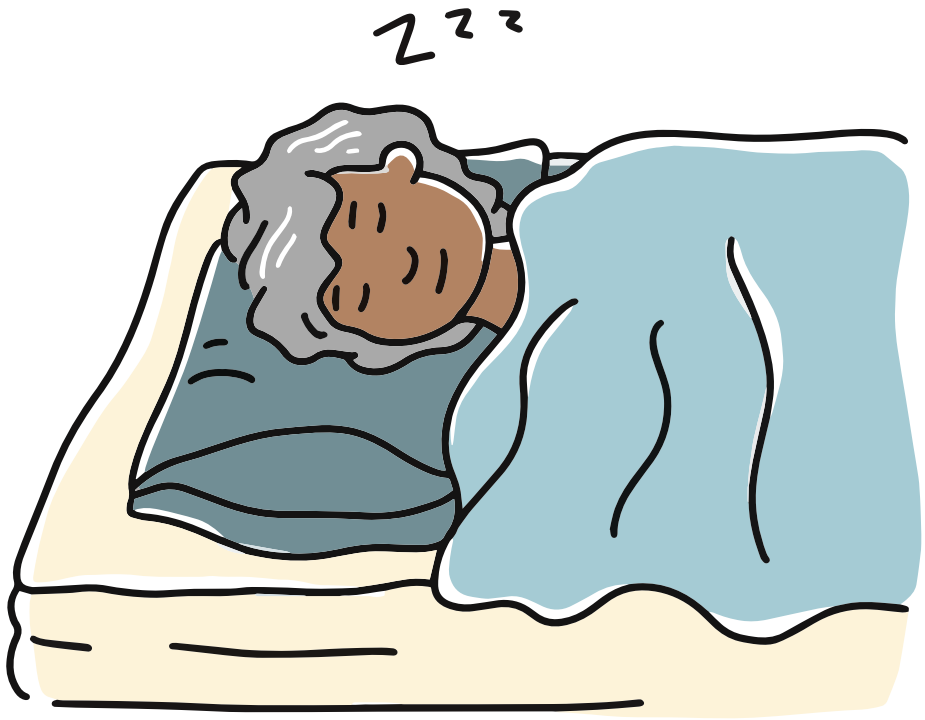


Washing





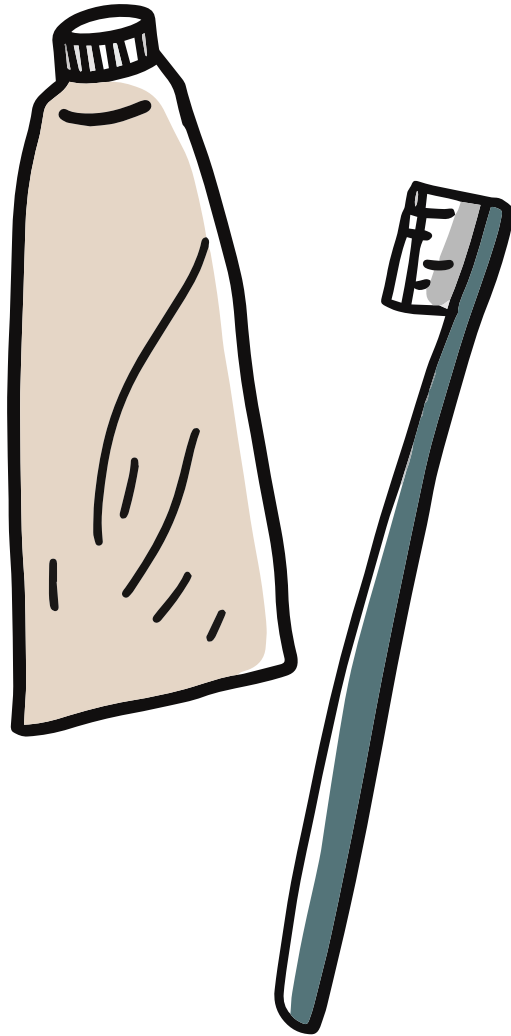
Toilet



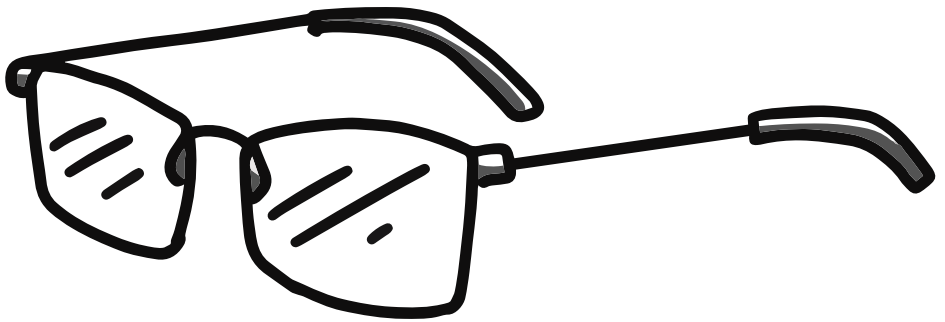
Sleep



Getting dressed



**Brushing teeth**



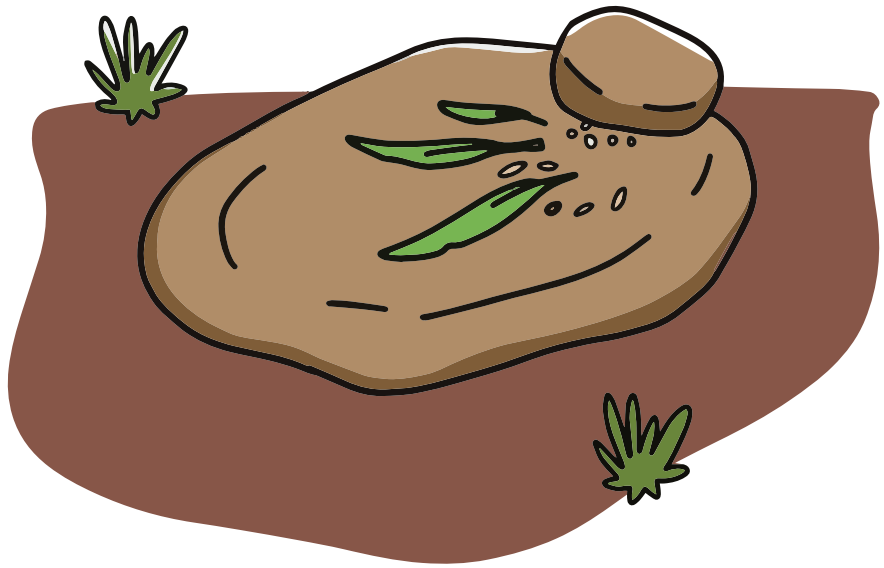
**Glasses**



Hearing aid



Pain



**Bush medicine**





Bush rub



Medication / Tablets



Nurse



Doctor



Wrapping bandages



Hot

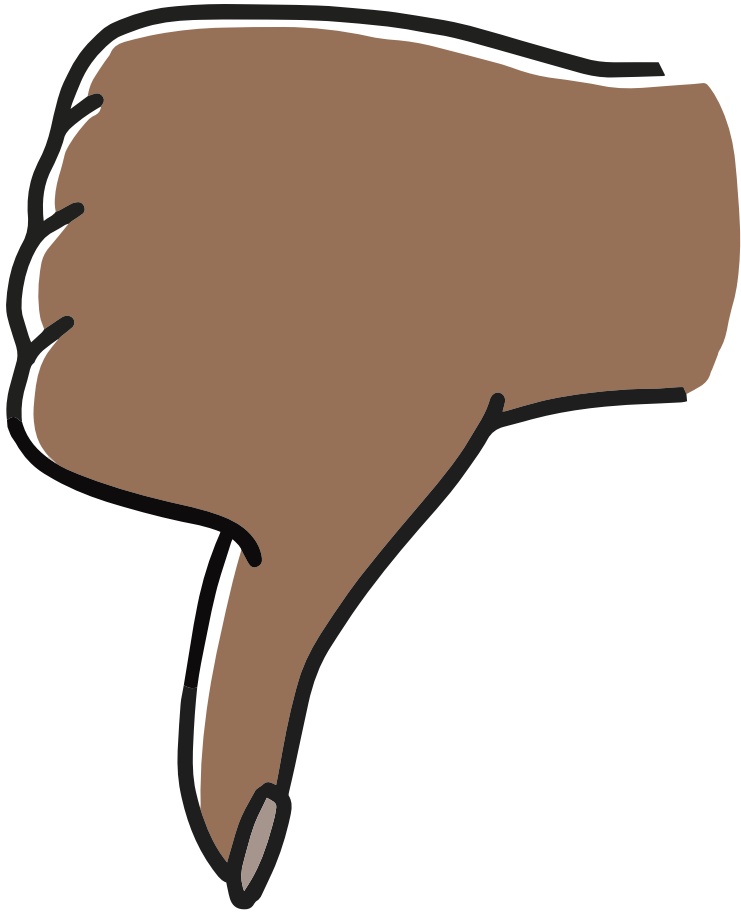


Cold



Like





**Dislike**



Happy



Sad



Tired



**Sick**



Worry



Hungry



**Thirsty**

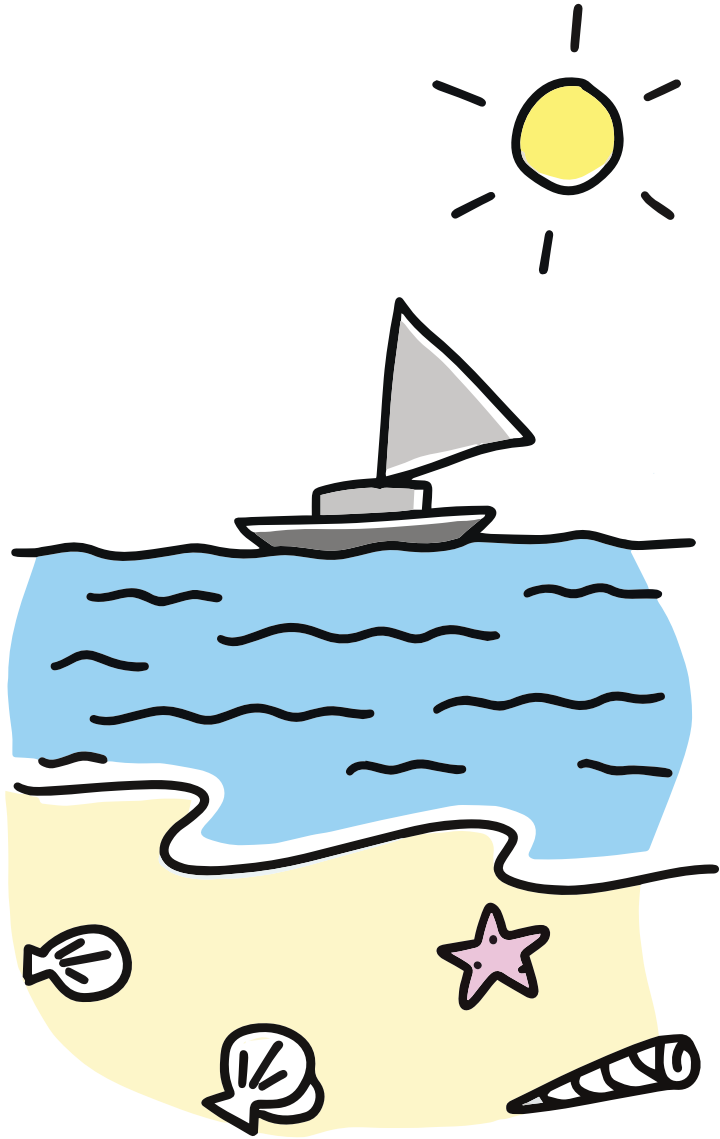




Go to the toilet



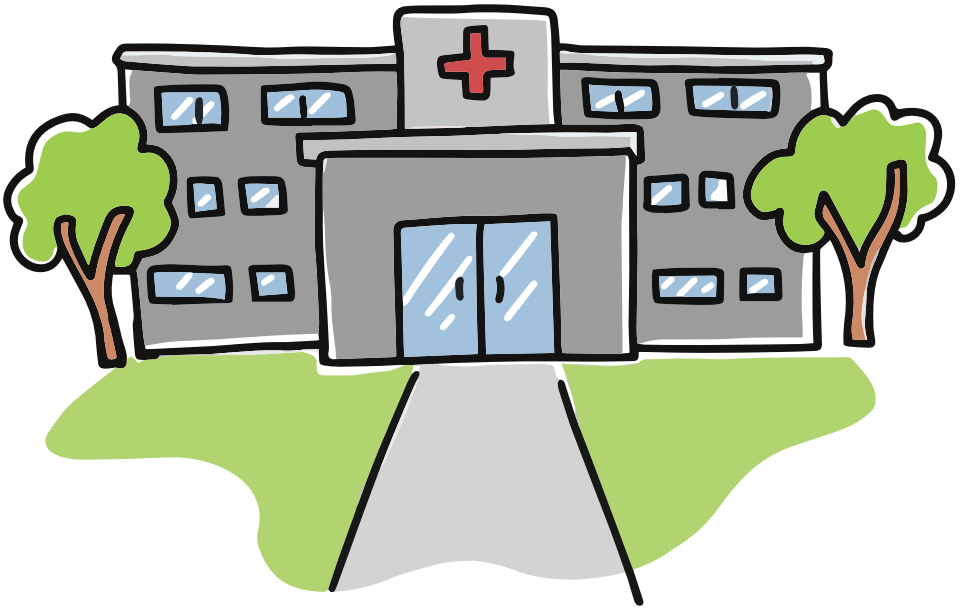
Country



Beach



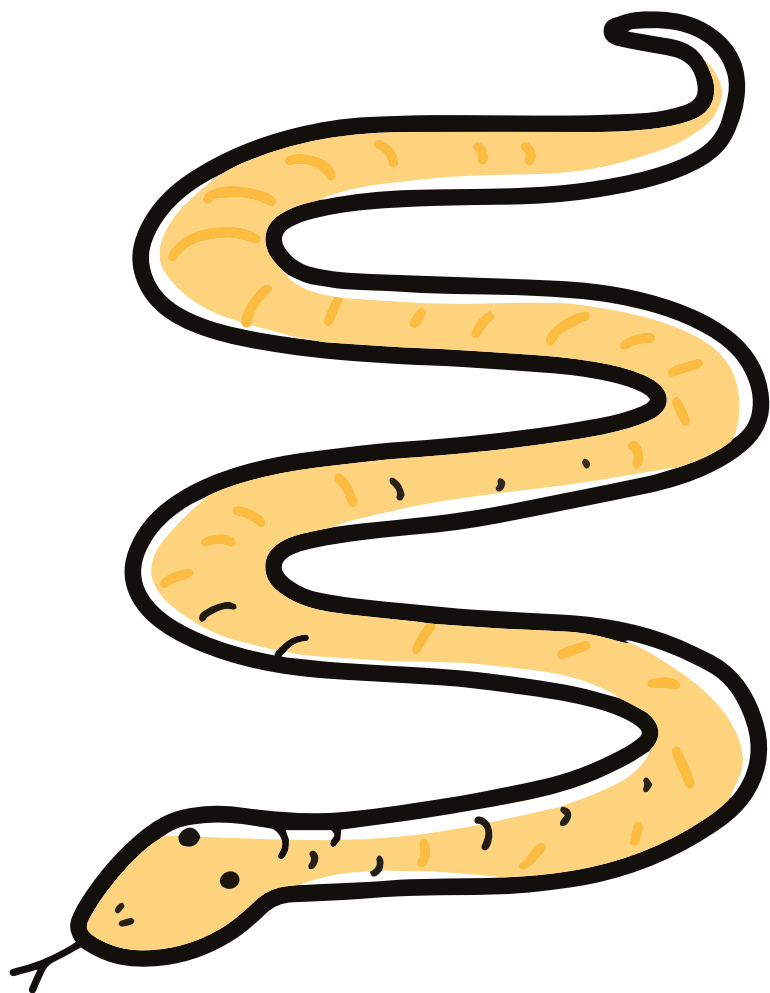
**Meeting place**



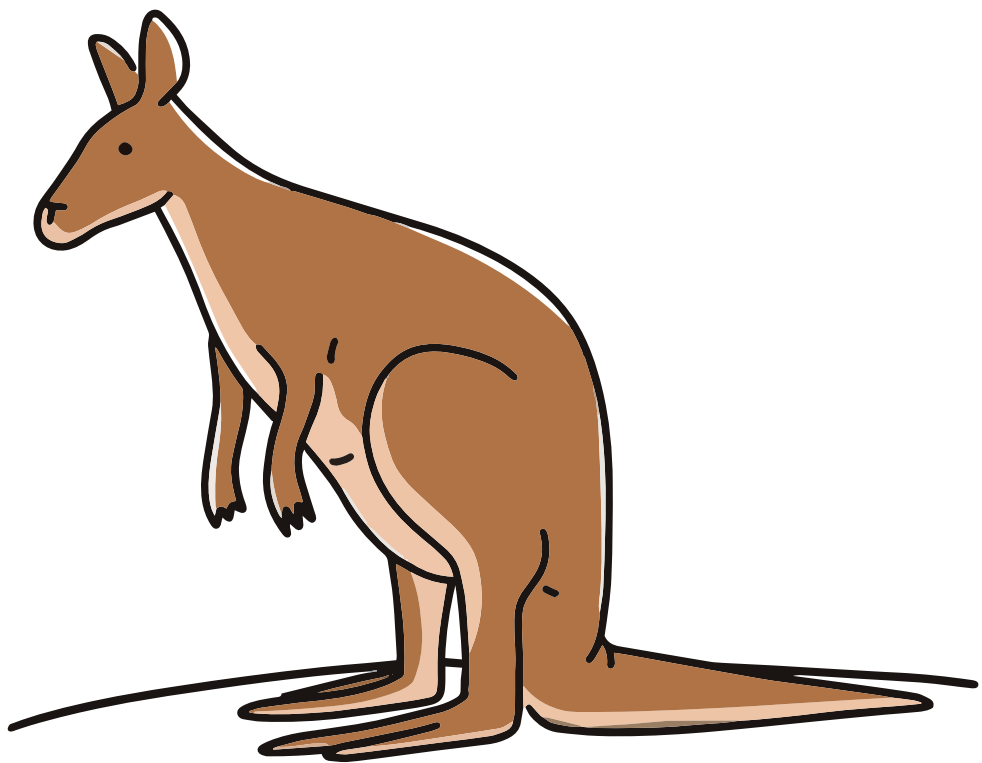
Clinic / Hospital



Bedroom

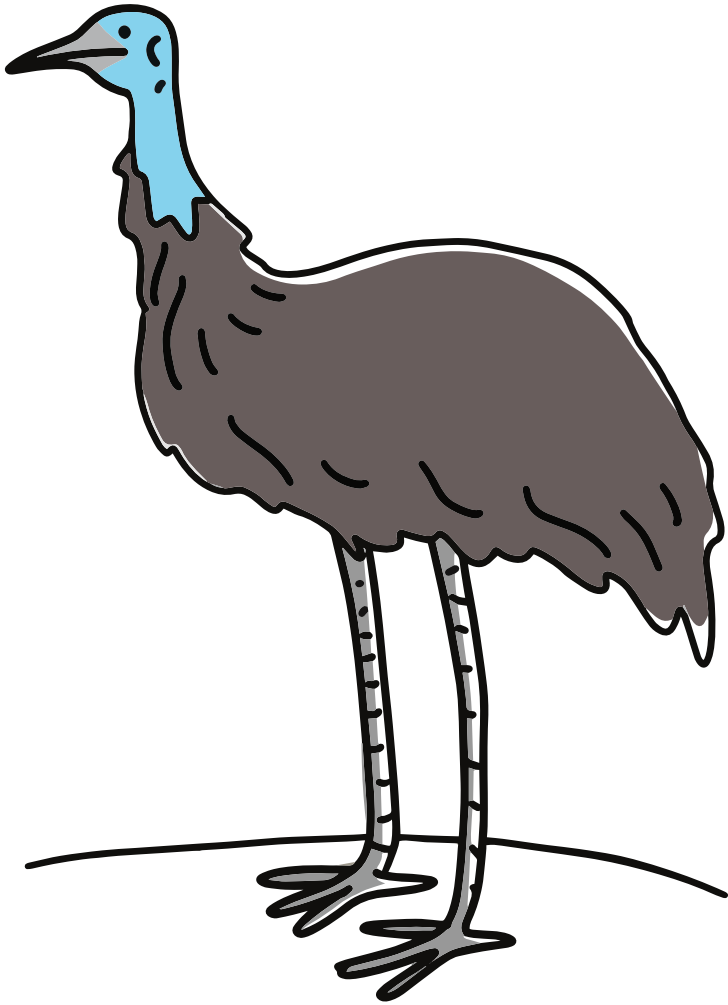


Snake

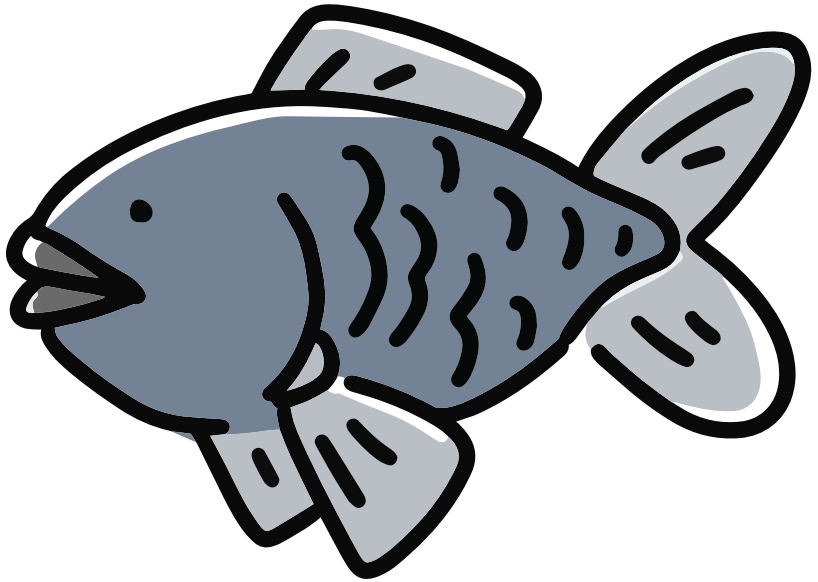


Kangaroo

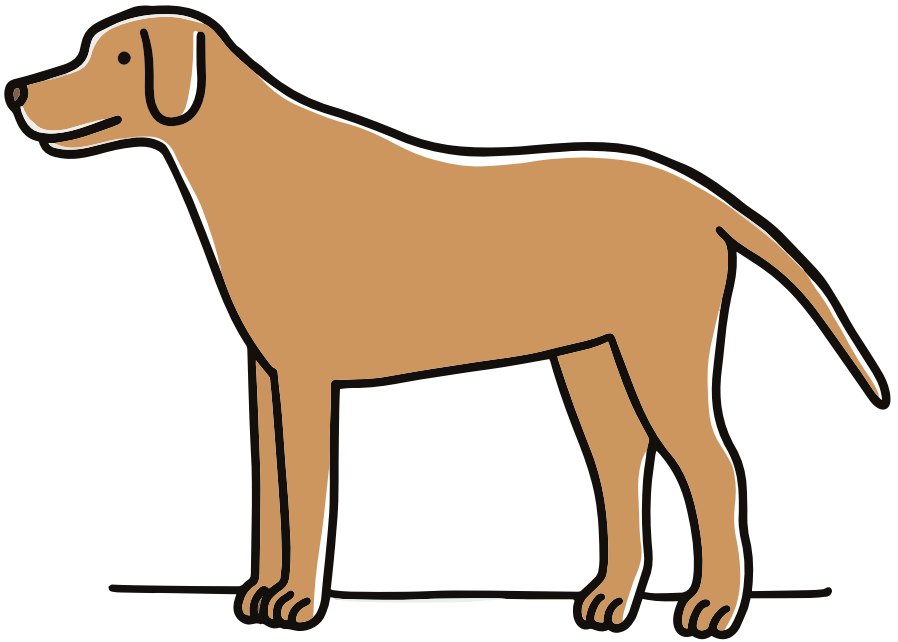




Emu



Fish



Dog



Yes



No