



**eden**<sup>SUITE</sup>   
Environmental Data & Reporting Software

# A PLATFORM FOR SUSTAINABLE CHANGE

Eden Suite is a web-based solution for all your carbon and sustainability management needs including: data management, monitoring, analysis and reporting.



Developed by enterprise systems integration specialist Intelligent Pathways, Eden Suite is built on a powerful platform of data exchange that provides a robust mechanism for environmental data capture and validation.

- **Manual and electronic data entry, with automatic conversion to CO<sub>2</sub>e**
- **Configure to suit your unique organisational structure**
- **Cloud-based SaaS with access for multiple users**

STRUCTURE	CAPTURE	INFORM	REPORT
Configure system for your organisational requirements	Collect and validate your environmental data with ease	Track and report your carbon performance with confidence	Prepare data to support reporting for internal and external stakeholder requirements
<ul style="list-style-type: none"> <li>• Build out organisation and asset hierarchies</li> <li>• Activity management</li> <li>• Data distribution</li> <li>• Scalability</li> </ul>	<ul style="list-style-type: none"> <li>• Data Exchange Network</li> <li>• Data Verification</li> <li>• Data Standardisation</li> </ul>	<ul style="list-style-type: none"> <li>• Monitoring</li> <li>• Comparing and Analysing Data</li> <li>• Interactive Reporting</li> <li>• Compliance Reporting</li> </ul>	<ul style="list-style-type: none"> <li>• Aligned to internal metrics</li> <li>• Compliant to mandatory and voluntary reporting standards</li> </ul>



## STRUCTURE

Eden Suite is an easy and flexible environmental data management solution.



### Build out Organisation and Asset Hierarchies

- Build multiple levels into your organisational hierarchy and make asset hierarchies as detailed as needed to support analysis and cost recharging.

### Activity Management

- Create an activity list and assign industry standard or organisation-specific conversion calculations. Activities can be linked to different levels or types of assets. Manage a full suite of environmental and broader ESG data, including water and waste.

### Data Distribution

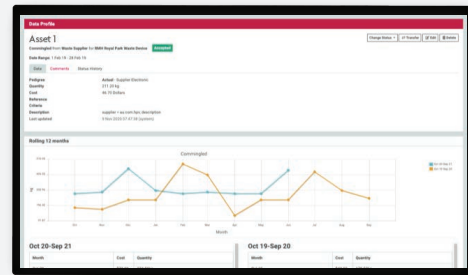
- Distribute carbon data according to your internal policies or preferences. Reference data or business rules can be used to apportion activity data received by an asset to 'child' assets in a hierarchy. Equally you can aggregate data for an activity received by an asset to its parent asset.

### Scalability

- Eden Suite is a truly scalable solution that can be used for site level carbon management right through to enterprise organisations with high volumes of interval data and multiple utility suppliers.
- Use tenancy management to maintain hard operational boundaries within your organisation. Date sensitivity can be applied to organisational hierarchies to enable appropriate historical reporting.
- Eden Suite can be scaled to be more than just a carbon system, with the ability to manage a broad range of environmental data inputs.

## CAPTURE

Eden Suite is built around a unique data exchange network that streamlines the collection of environmental data from your supply chain.



- Electronic data from your supplier list is pushed into the network for standardisation before being distributed into your GHG inventory for verification, analysis and reporting.
- Where electronic data feeds are not practical, data can be manually uploaded or entered to the network.

### Data Exchange Network

- Eden Suite's data exchange network facilitates the flow of environmental data from all points of your supply chain. This robust 'portal of information' allows your data to be presented and used in a number of different ways to support the varying requirements of internal and external stakeholders.
- Minimise the time your users spend on data entry - increased time to focus on analysis and carbon reduction strategies.

### Data Verification

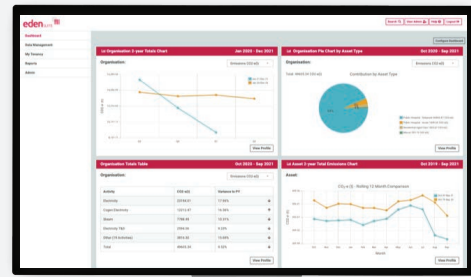
- Easily identify errors by testing activity data against set business rules. Eden Suite gives absolute peace of mind that your environmental data is correct.

### Data Standardisation

- Raw data is converted automatically into CO<sub>2</sub>e by calculation methodologies that are applied consistently across your entire organisation.
- Date sensitivity can also be applied to calculation methods to accommodate changing legislative requirements.

## INFORM

Ensure your organisation can meet reporting obligations with confidence.



### Monitoring

- Track your carbon consumption as information becomes available through your GHG Inventory. Powerful search capability makes it easy for you to search for assets and get a full snapshot of all key factors.
- Troubleshoot and plan reduction strategies more effectively with immediate access to environmental data.

### Comparing and analysing data

- Group assets into like categories and assess activity results by comparing them to relevant time periods.
- Enhance the value of carbon management to your business with internal benchmarking and analysis.

### Data Quality

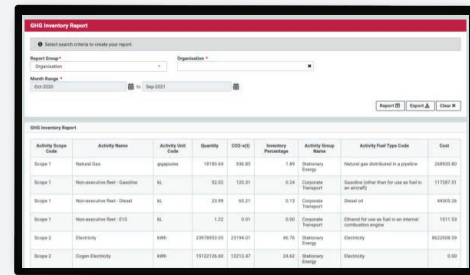
- Fill in data gaps with Estimation capabilities. Consistent estimation methods can be used and estimates are replaced by actual data when it is received.
- Data that has failed business rules is put into a pending state for investigation. Eden Suite can accommodate multiple data sources for particular assets or activities, and prioritises which source is to be used for calculation and reporting.

### Collaborate

- Identify best practice within your organisation with benchmark indicators, particularly when combined with grouped assets or organisation types.

# REPORT

Prepare data to support reporting for internal and external stakeholder requirements.



The screenshot shows the 'GHS Inventory Report' interface. At the top, there are filters for 'Report Group' (set to 'All'), 'Organisation' (set to 'Eden Suite'), and 'Report Range' (set to 'All'). Below these are buttons for 'Report', 'Report A', and 'Report B'. The main table displays the following data:

Activity Group Code	Activity Name	Activity Unit Code	Quantity	CO2-e	Intensity Percentage	Activity Group Name	Activity Unit Type Code	Cost
Stage 1	Natural Gas	gph/1000	10100.04	90.85	1.91	Stationary Energy	Natural gas distributed in a pipeline	208000.00
Stage 1	Non-renewable Fuel: Coal	KL	92.00	120.00	0.14	Corporate Transport	Coal for use in a power plant	111200.00
Stage 1	Non-renewable Fuel: Oil	KL	20.00	40.00	0.14	Corporate Transport	Oil for use in a power plant	44000.00
Stage 1	Non-renewable Fuel: Gas	KL	1.00	0.00	0.00	Corporate Transport	Gas for use in a power plant	100.00
Stage 2	Electricity	MWh	2000000.00	1000.00	40.00	Stationary Energy	Electricity	800000.00
Stage 2	Renewable Energy	MWh	1000000.00	500.00	20.00	Stationary Energy	Renewable Energy	400000.00

## Interactive reporting

- Different stakeholders have different reporting requirements.
- Select data to produce reports that accommodate varying stakeholder needs. By simplifying how data is presented, decisions about your carbon management strategy can be made quickly and with confidence.

## Compliance reporting

- Produce reports compliant with a range of mandatory and voluntary reporting standards, including NGERs, Climate Active, NABERS and Carbon Disclosure Project (CDP). The adaptive nature of Eden Suite means that industry specific reports can be established to meet your specific needs. This can include ESG reporting under the GRI standards.

## WHAT DOES THIS MEAN, PRACTICALLY?

STRUCTURE	CAPTURE	INFORM
<i>What can I track with Eden Suite?</i>	<i>How can I group assets to reflect my organisational structure?</i>	<i>What compliance standards will Eden Suite align to?</i>
<ul style="list-style-type: none"> <li>• Energy (consumed and produced)</li> <li>• Water</li> <li>• Waste</li> <li>• Transport</li> <li>• Consumables (e.g. paper)</li> <li>• A wide range of Scope 3</li> <li>• Other CSR activities can also be tracked</li> </ul>	<ul style="list-style-type: none"> <li>• Asset Hierarchies (e.g. buildings within a site)</li> <li>• Organisation hierarchies (eg. business units within an organisation)</li> <li>• Portfolio views of tenants or organisations</li> </ul>	<ul style="list-style-type: none"> <li>• GHG Protocol Reporting</li> <li>• NGER Reporting</li> <li>• Climate Active Reporting</li> <li>• NABERS' Reporting</li> </ul>

## EDEN SUITE OFFERING:

OFFERING	DESCRIPTION
Eden Suite Software	<ul style="list-style-type: none"> <li>• Cloud Based SaaS Subscription</li> <li>• Hosted and fully supported in Australia</li> <li>• Network Data Subscription for electronic suppliers</li> <li>• Full access to all functionality for unlimited users</li> </ul>
Managed Services	<ul style="list-style-type: none"> <li>• Data Entry</li> <li>• Monthly/ Quarterly Data Management and analysis</li> <li>• Data completeness monitoring</li> <li>• Benchmark and performance reporting</li> </ul>
Adhoc Services & Consulting	<ul style="list-style-type: none"> <li>• Supplier management</li> <li>• Compliance reporting and auditing</li> <li>• Action planning</li> </ul>





## Get in Touch

Find out why Eden Suite can be one of your most valuable team members

### **Simon McCabe**

Chief Commercial Officer

**Ph:** 07 3852 5228

**Email:** [simon.mccabe@intelligentpathways.com.au](mailto:simon.mccabe@intelligentpathways.com.au)

### **John Hutchinson**

Emissions Management Consultant

**Email:** [john.hutchinson@intelligentpathways.com.au](mailto:john.hutchinson@intelligentpathways.com.au)

Or Enquire via Intelligent Pathways contact page:  
<https://intelligentpathways.com.au/contact/>



An Intelligent Pathways product