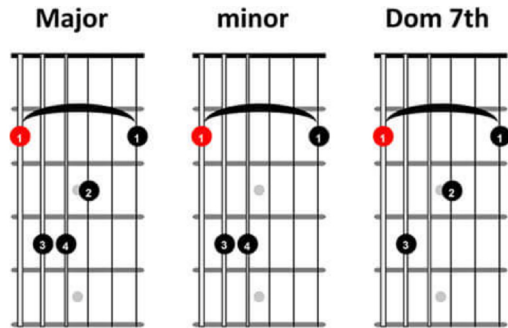


# Bar Chord Workshop

Bar, Barre, Capasto

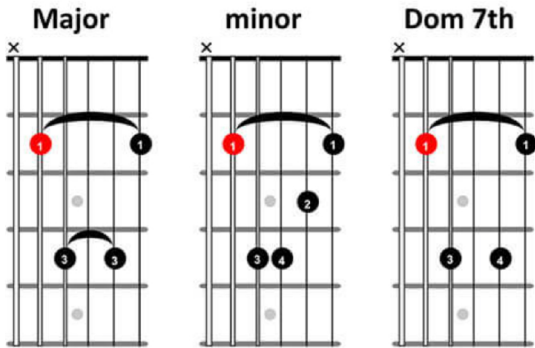
E Type Bar Chords, Root on 6th string:



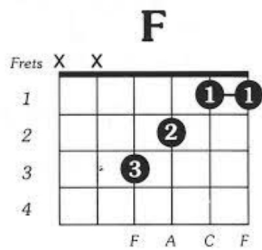
## ¿Donde Esta Paco?, by Carlo Basille

The image displays a musical score for the piece '¿Donde Esta Paco?' by Carlo Basille. It is written in 4/4 time and features a guitar part with a treble clef and a bass clef. The score is divided into three systems. The first system (measures 1-4) has chords Fmaj7, E, Fmaj7, and E. The second system (measures 5-8) has chords G, Fmaj7, E, and E. The third system (measures 9-12) has chords F, E, G, F#, F, and E. Each system includes a guitar tablature line with fret numbers and a chord diagram above the staff. The tablature uses numbers 0-5 for frets and includes bar lines and slurs. The chord diagrams show the fingerings for each chord.

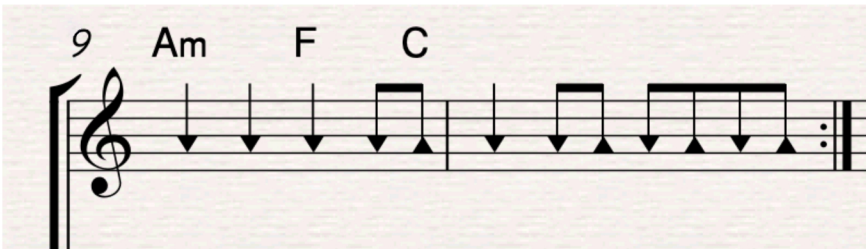
A Type Bar Chords, Root on 5th string:



Half Bar:



Chord Progression:



Estudio Sencillo I, Leo Brouwer

