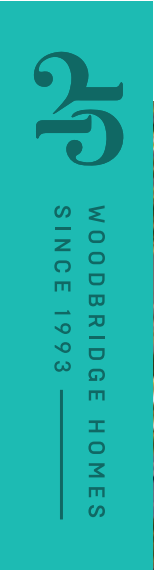


BAYCREST WEST
• BURKE MOUNTAIN •



ARTIST RENDERING

Baycrest West Features List

BAYCREST WEST HIGHLIGHTS

- 24 two-, three-, and four-bedroom townhomes, from 1,360 to 2,083 sq. ft.
- A beautiful natural setting surrounded by trails, parks, and outdoor community amenities
- Expansive windows that welcome natural light into the home
- Thoughtful kitchens with oversized drawers, corner cabinet organizers and open shelving for maximized storage
- Vaulted ceilings in all principal bedrooms
- Double sinks in ensuite bathrooms with lots of counter space
- Spacious two-car garages with side-by-side or tandem parking and automatic garage door openers

SETTING & EXTERIORS

- Developed by Woodbridge Homes—an established developer with over 25 years of experience building homes in BC
- Designed by Ciccozzi Architecture
- Fenced yards with ample room to play and enjoy the beautiful setting
- Quality exterior materials including Hardie panels and cottage-style shake Hardie panels on select streetside homes
- Large driveways for additional car parking in select homes
- Surrounded by great biking trails and walking paths
- All homes outfitted with an EV ready junction box

ON-SITE AMENITIES

- Children’s outdoor play area

HOME INTERIORS

- Interiors that bring in the tones of Burke Mountain into homes
- Choice of two interior colour schemes curated by Portico Design Group, inspired by the surrounding landscape
- Ground-floor living space and/or bedroom in select homes
- TV wall with cable outlets designed for the perfect home media centre
- Durable laminate wood flooring throughout kitchen, living and dining areas in natural or grey oak
- Plush carpeting in bedrooms, upper hallways, stairways and lower family rooms for warmth and comfort
- Expansive windows that welcome natural light into the home
- Sleek window blinds control privacy and ambience

KITCHENS

- Premium stainless steel KitchenAid appliance package featuring:
 - 30" KitchenAid slide-in gas range with 5-burner stove and convection oven
 - 30" Faber slide-out hood fan for a sleek, integrated look
 - 36" KitchenAid French door fridge and freezer with internal water and ice dispenser
 - 24" KitchenAid dishwasher with a third level rack that adds 35% more washing space

- Large pantry for additional storage with built-in KitchenAid microwave and trim kit in most homes
- Premium Grohe single-handle pull down faucet with dual spray
- Refined shaker-style cabinetry
- Stylish and durable Caesarstone quartz countertops designed to withstand stains, scratches and everyday life
- Chic white hexagonal ceramic tile backsplash
- Corner cabinet organizers and oversized drawers for convenient and accessible storage
- Open shelving in upper cabinets (and islands in select homes) offers an opportunity to add a personalized design touch
- Elegant recessed under-cabinet lighting ensures bright space to cook in
- Islands and extended countertops offer additional seating for entertaining

BATHROOMS & LAUNDRY

- Refined shaker-style cabinetry
- Crisp white ceramic tile on main bathroom walls creates a clean aesthetic
- 12 x 24" porcelain tiles on ensuite walls and floors
- Double sinks in ensuite bathrooms for added convenience
- Premium Grohe faucets in polished chrome
- Stylish and durable Caesarstone quartz countertops
- Luxurious soaker tubs in main bathrooms

- Spa-inspired rain shower heads in ensuite bathrooms
- Sleek frameless glass shower surrounds in ensuite bathrooms
- Efficient one-piece dual flush toilets
- Laundry room complete with Whirlpool front-load side-by-side or stacked washer and dryer

OPTIONAL UPGRADES

- Laundry room millwork including countertop, shelving, cabinet and drying rack
- Gas connections on patios or decks to make grilling easy
- Fully-Equipped, level 2 electric vehicle charging station in garage
- Garages with finished drywall and painted walls
- Custom storage solutions for principal walk-in closets
- Conversion of flex areas into a further bedroom
- Laminate wood flooring throughout

WARRANTY/SECURITY/ SUSTAINABLE FEATURES

- Comprehensive 2/5/10 year home warranty protection
- Hard wired smoke detector and Carbon Monoxide monitors

OPEN KITCHENS SUPPORT
SOCIAL CONNECTION
WHILE NURTURING YOUR
DAY-TO-DAY EXPERIENCES.





Naturally elevated living at Baycrest West on the Rise.

24 MOUNTAINSIDE TOWNHOMES
THOUGHTFULLY SET IN NATURE

Taking a distinctive approach to designing homes on Burke Mountain, Woodbridge has embraced mountainside living and integrated countless natural features into their homes. Thoughtfully constructed, with room to grow, Baycrest West is the perfect option for those looking to stay connected—with their roots still planted in nature.



A community
inspired by nature,
where you can savour
life in slow motion.



Site Plan



BAYCREST AVENUE

GISLASON AVENUE

MITCHELL STREET

D
101

D
102

D
103

D
104

D
105

C
110

C
109

C
108

C
107

C
106

B
111

B
112

B
113

B
114

E
115

A5
124

A1
123

A2
122

A1
121

A1
120

A2
119

G
118

A3
117

A5
116

BAYCREST WEST

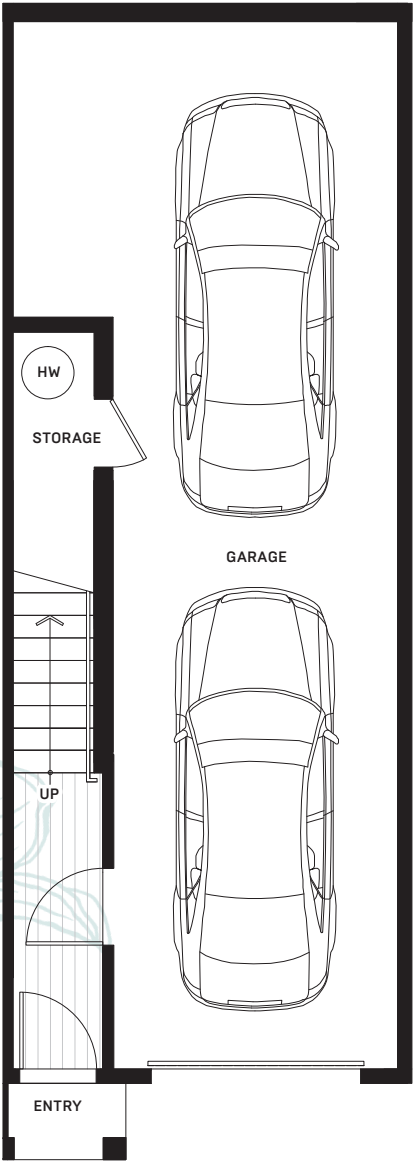
• BURKE MOUNTAIN •

-  2 BEDROOM
-  3 BEDROOM
-  3 BEDROOM + FLEX
-  4 BEDROOM + FLEX

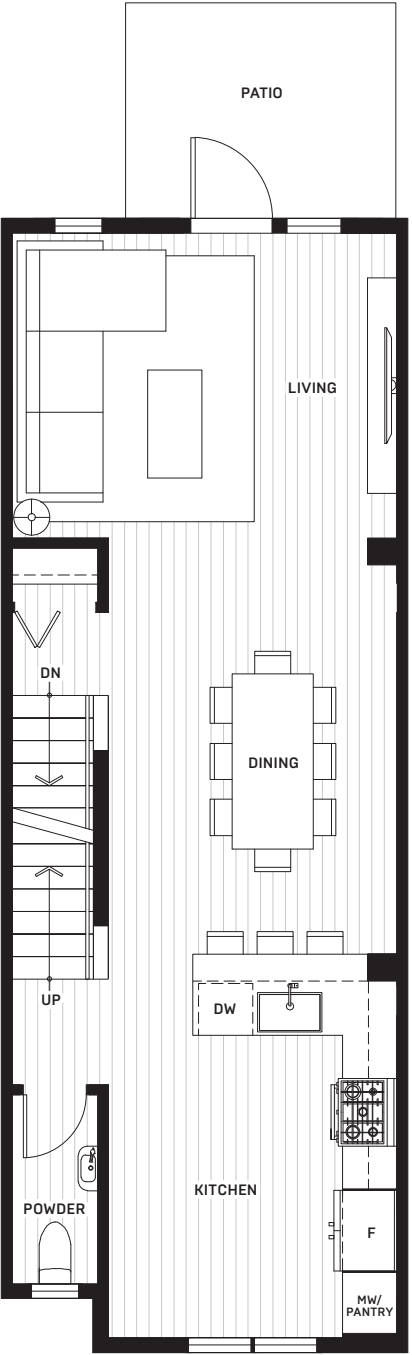
A1

3 BEDROOM
2.5 BATHROOM

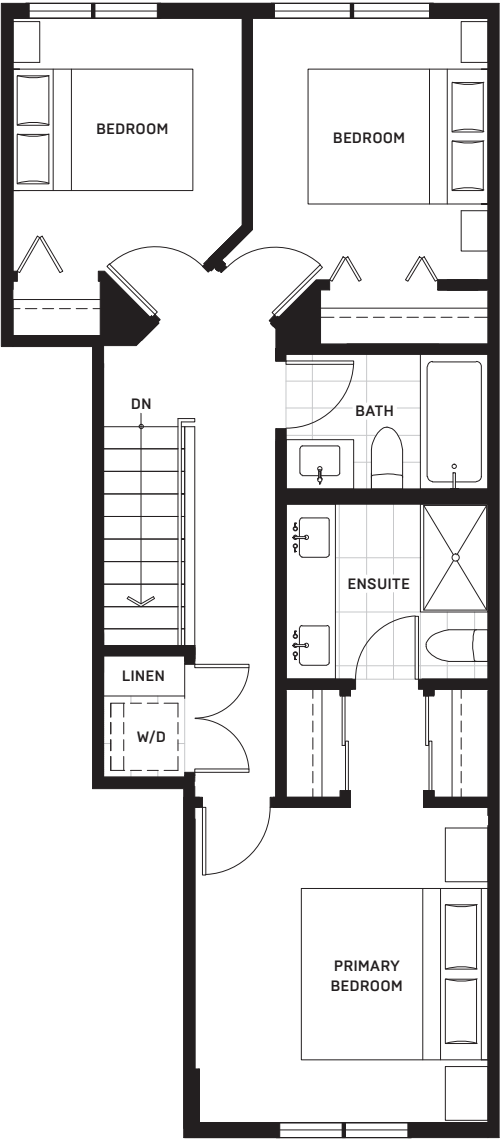
SQ FT
1360 - 1383



LOWER

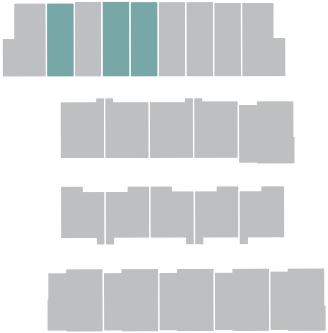


MAIN



UPPER

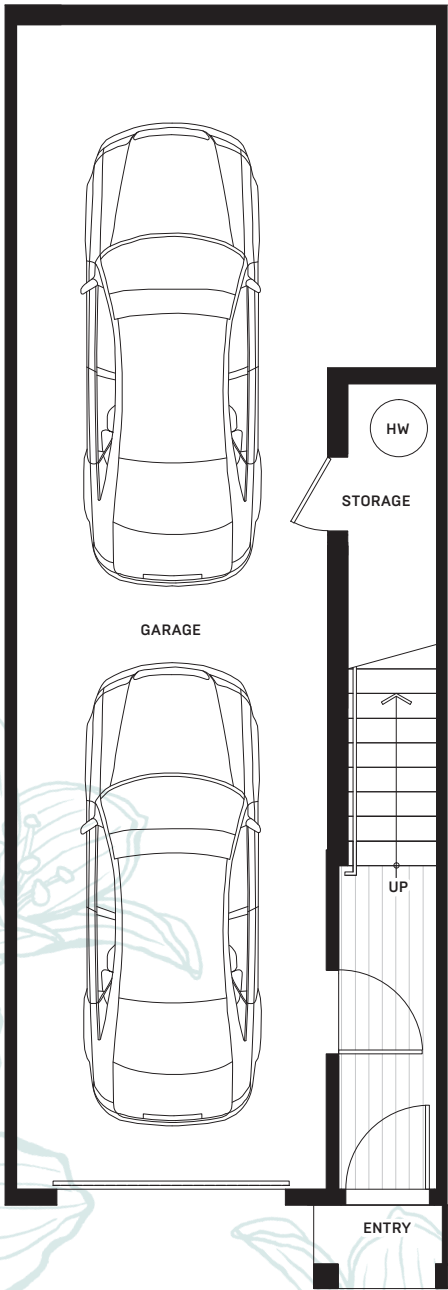
Architectural Plan: AA1, AA3
The developer reserves the right to make changes, modifications or substitutes to the building design, specifications and floorplans should they be necessary. Renderings, views, and layouts are for illustration purposes only. E.&O.E.



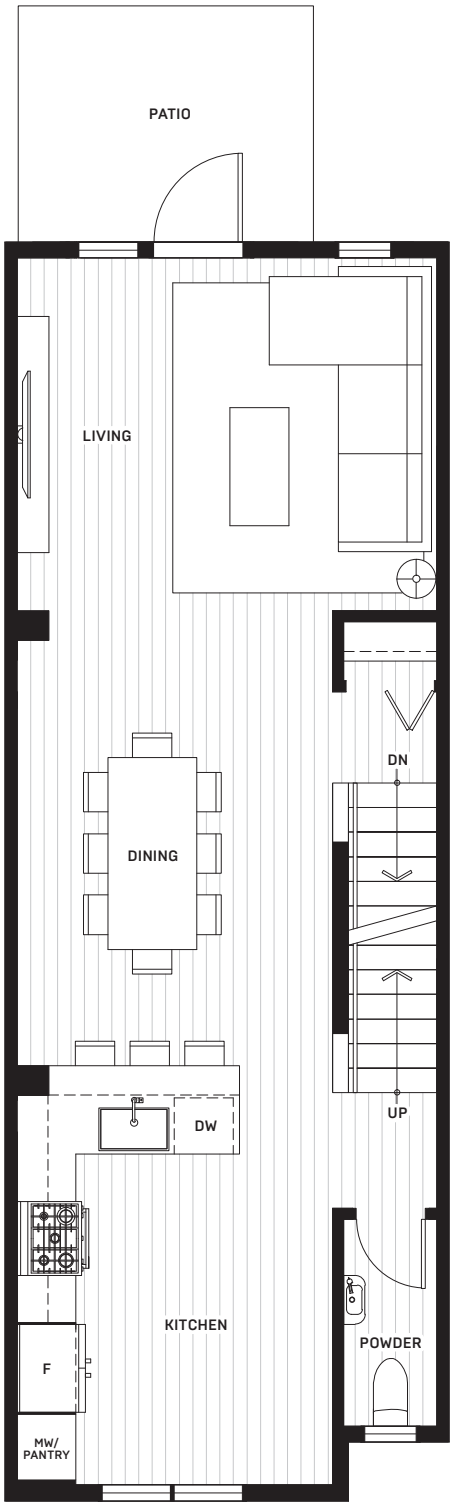
A2

3 BEDROOM
2.5 BATHROOM

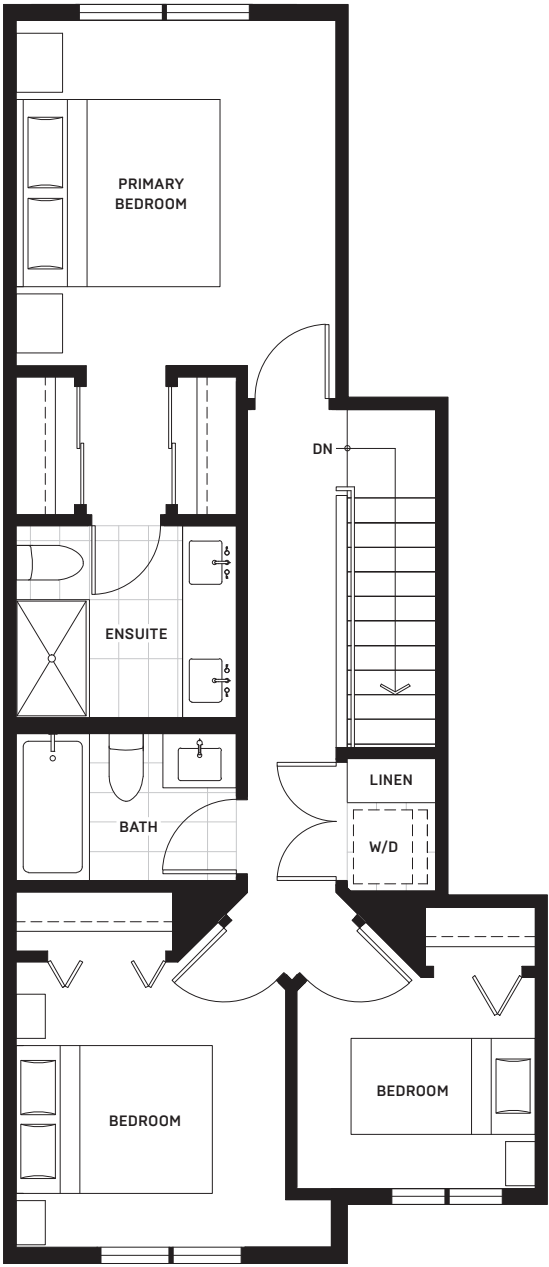
SQ FT
1,364



LOWER

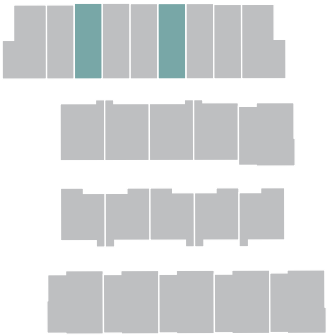


MAIN



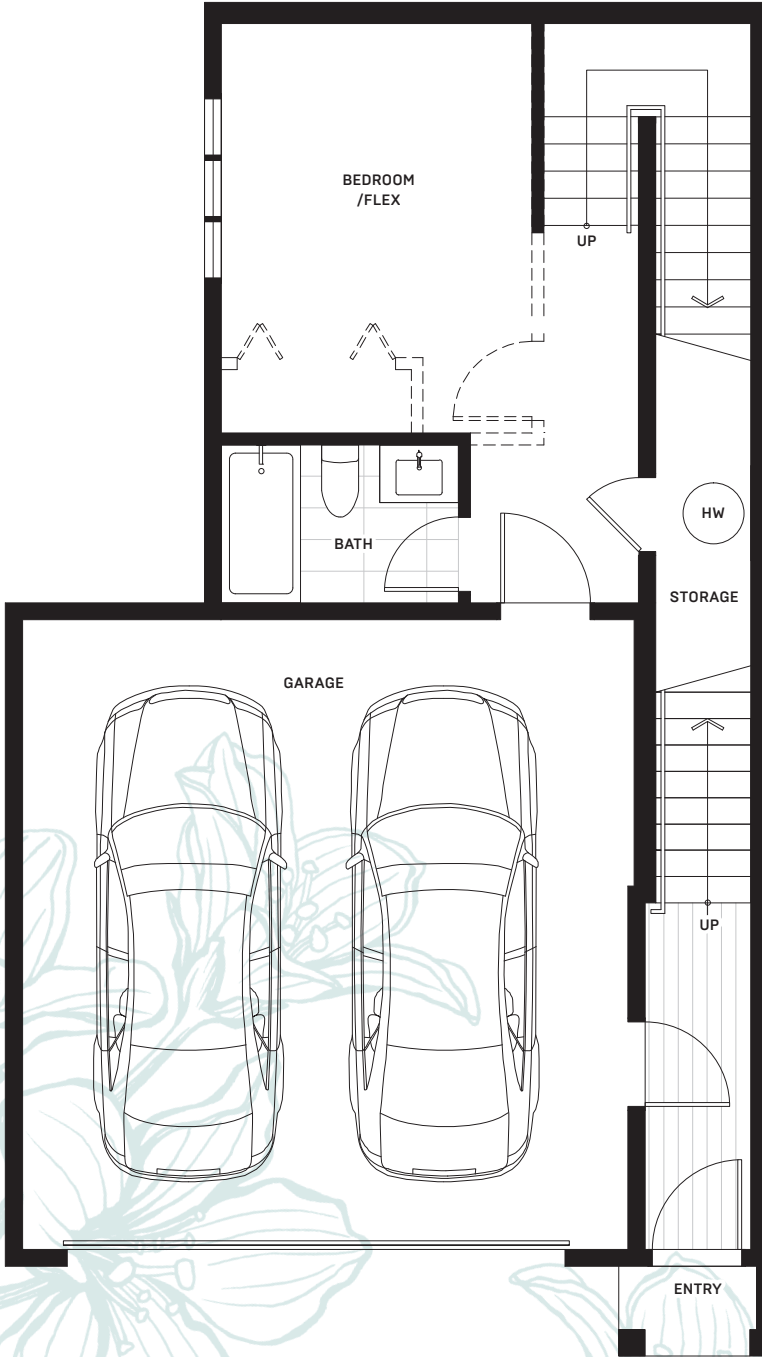
UPPER

Architectural Plan: AA
The developer reserves the right to make changes, modifications or substitutes to the building design, specifications and floorplans should they be necessary. Renderings, views, and layouts are for illustration purposes only. E.&O.E.

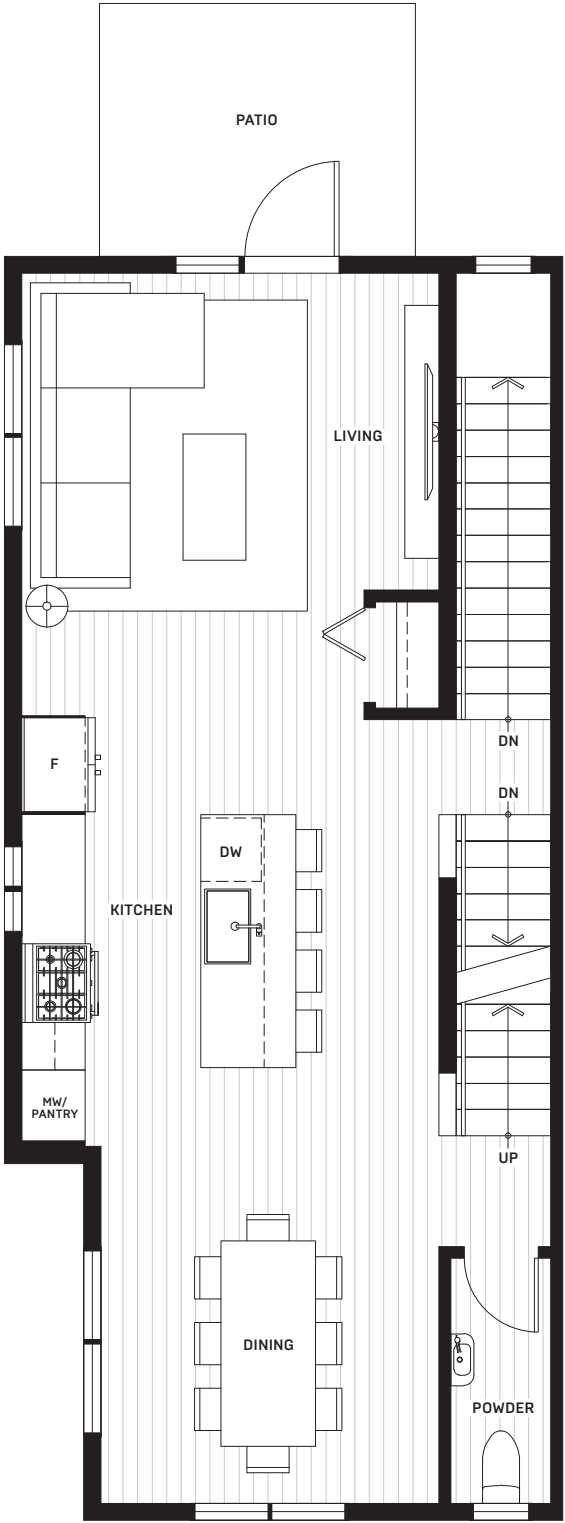


A5

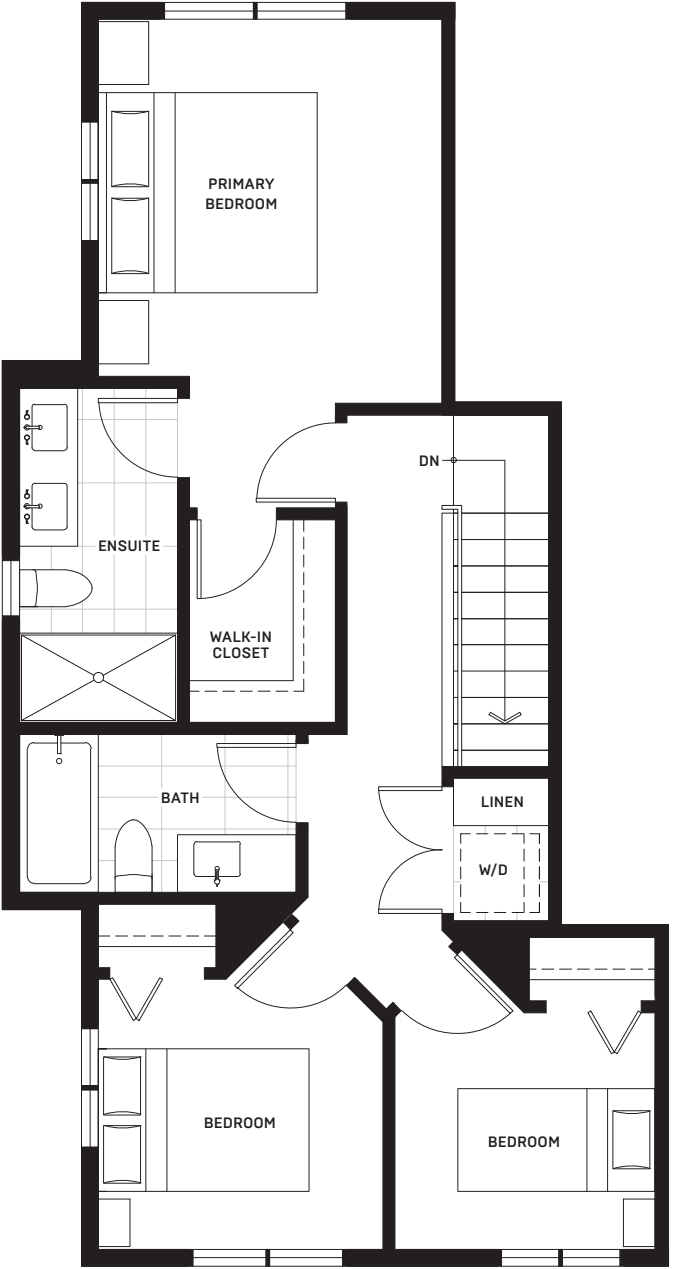
3 BEDROOM + FLEX | SQ FT
3.5 BATHROOM | 1,743



LOWER



MAIN



UPPER

Architectural Plan: AE2
The developer reserves the right to make changes, modifications or substitutes to the building design, specifications and floorplans should they be necessary. Renderings, views, and layouts are for illustration purposes only. E.&O.E.



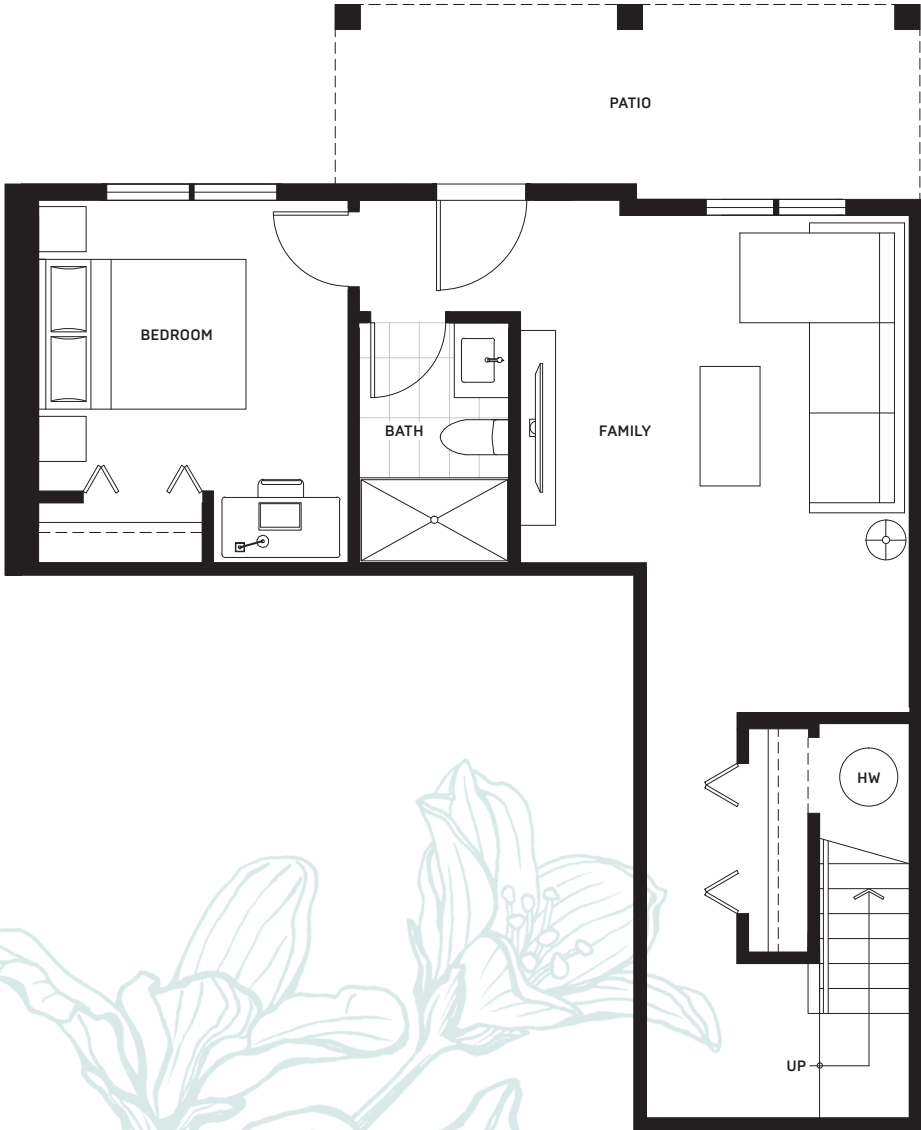
D Interior Unit

4 BEDROOM + FLEX

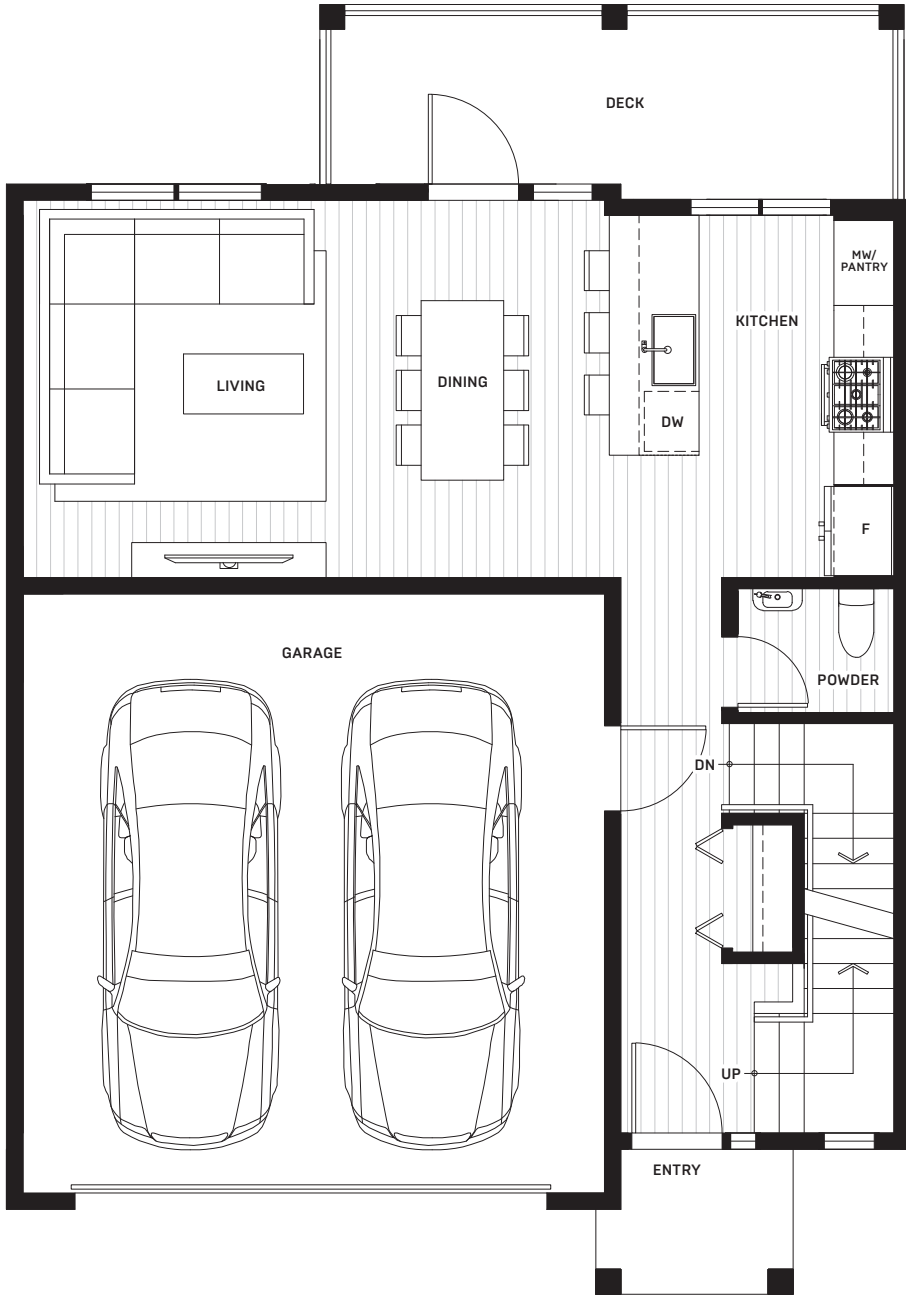
3.5 BATHROOM

SQ FT

2,055



LOWER



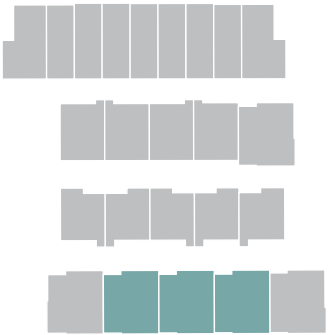
MAIN



UPPER

Architectural Plan: D

The developer reserves the right to make changes, modifications or substitutes to the building design, specifications and floorplans should they be necessary. Renderings, views, and layouts are for illustration purposes only. E.&O.E.



D

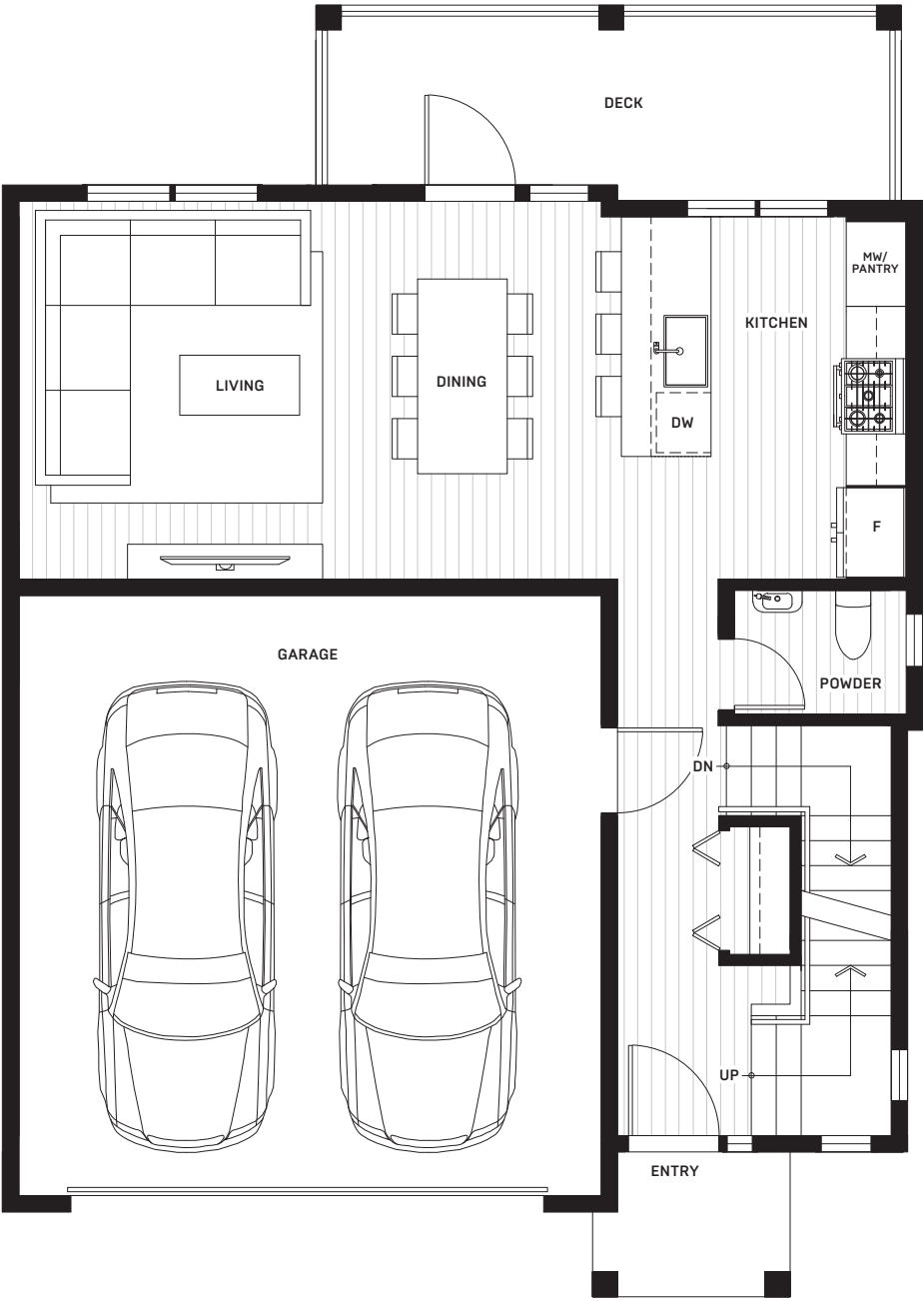
Left Corner Unit

4 BEDROOM + FLEX

3.5 BATHROOM

SQ FT

2,083



Architectural Plan: DE1

The developer reserves the right to make changes, modifications or substitutes to the building design, specifications and floorplans should they be necessary. Renderings, views, and layouts are for illustration purposes only. E.&O.E.

D

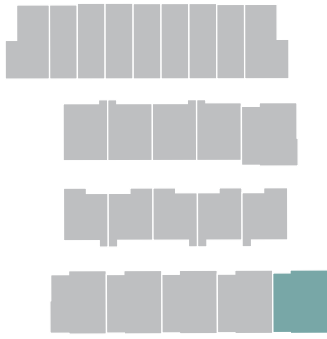
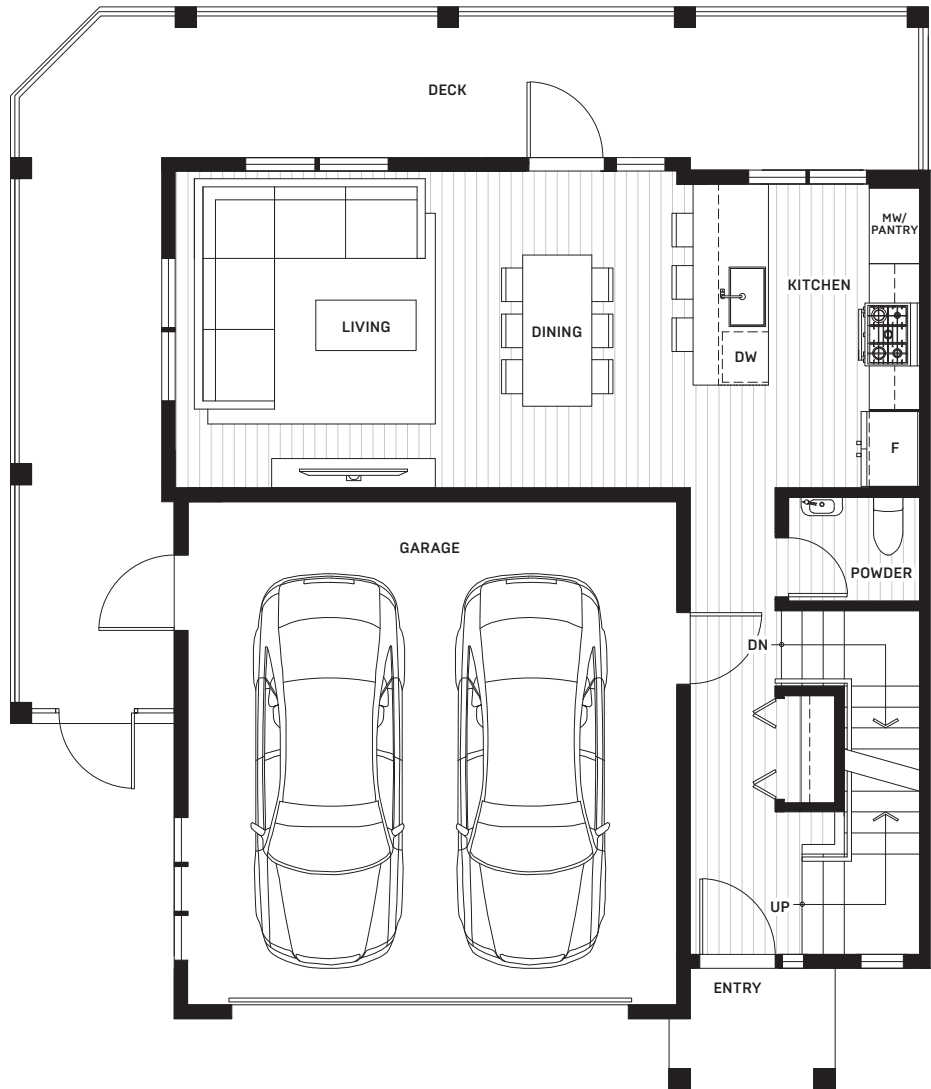
Right Corner Unit

4 BEDROOM + FLEX

3.5 BATHROOM

SQ FT

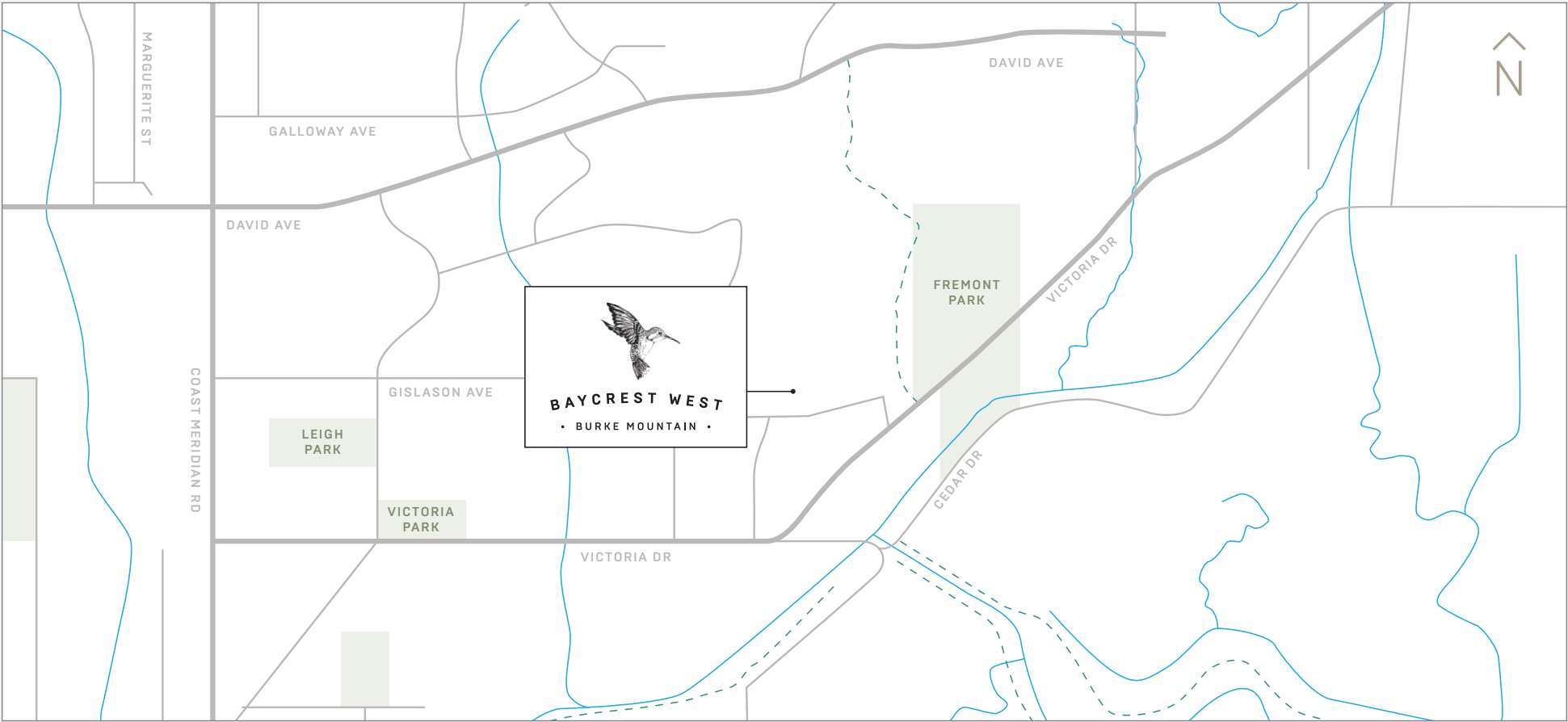
2,078



Architectural Plan: DE2

The developer reserves the right to make changes, modifications or substitutes to the building design, specifications and floorplans should they be necessary. Renderings, views, and layouts are for illustration purposes only. E.&O.E.

Discover Burke Mountain today.



CONTACT

T 604.474.2106
E [INFO@LIVEATBAYCREST.COM](mailto:info@liveatbaycrest.com)

SALES GALLERY

#168 - 3565 BAYCREST AVE
COQUITLAM BC

NOW SELLING

CONTACT OUR SALES TEAM
FOR MORE DETAILS

The developer reserves the right to make changes, modifications or substitutes to the building design, specifications and floorplans should they be necessary. Renderings, views, and layouts are for illustration purposes only. This is not an offering for sale and such an offering can only be made after filing a disclosure statement. E.&O.E.



WOODBIDGE HOMES

A unique story, 25 years in the making.

A generational mindset from a family-owned
business with over 25 years of experience
building communities in BC. A clear vision for livability
both in the home and community.

