

Sign

MODULAR SYSTEMS

THE PERFECT
SYNTHESIS OF
LIGHT AND DESIGN



PRODUCT DESIGN BY MICHELE MARCON

Sign

MODULAR SYSTEMS

THE PERFECT
SYNTHESIS OF
LIGHT AND DESIGN

Sign

Style and flexibility: the perfect synthesis of functional light that furnishes. A practical and consistent solution in all indoor environments

Applied to the wall, Sign traces a horizontal line of light that divides the room, following the architecture of the spaces and creating a continuous decorative light effect. The aluminum structural element, in anodised matte black finish, can be complemented with a range of aluminium accessories or cabinets, thus furnishing each environment. Sign integrates a pair of LED light sources: the upper one acts as wallwasher courtesy light; the lower one is instead a functional lamp, which ensures proper worktop lighting. The IP44 degree of protection allows Sign to be safely installed in damp locations such as bathrooms or kitchens, or any other environment requiring frequent cleaning.

IDEAL FOR

- any indoor environments
- damp locations (IP44)

FEATURES

- versatile and functional
- easy installation
- range of accessories and cabinets
- furnishing light







A new style with refined finishes: modern aesthetics for a more than unique combination of light and furniture

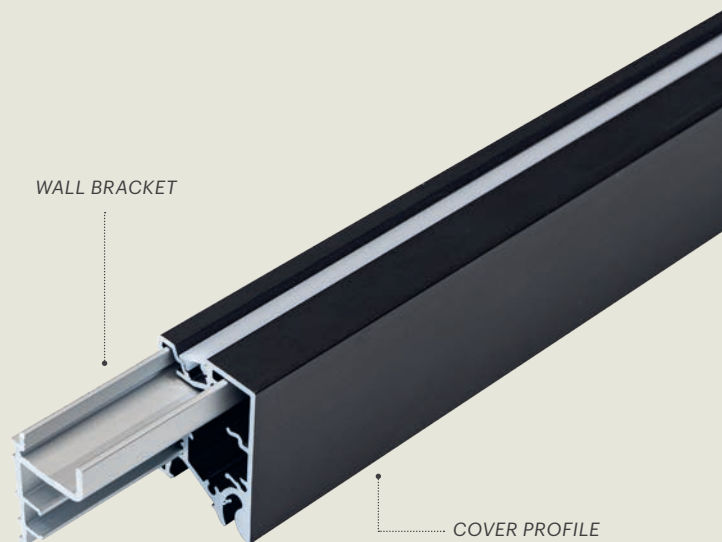
Sign is renewed with **elegant new finishes**, adding Champagne and Anthracite Grey to the standard brushed black. New accessories with **great visual impact** are added to the current range, offering, new aesthetic and functional possibilities in each environment: **new cabinet module with decorative rounded corners** and a new mirror module with curved lines, in which the light harmoniously follow the shapes. Also introducing a **new range of accessories, made in modern shapes with sophisticated materials such as smoked glass and matt black metal wire**, to embellish the horizontal light bar





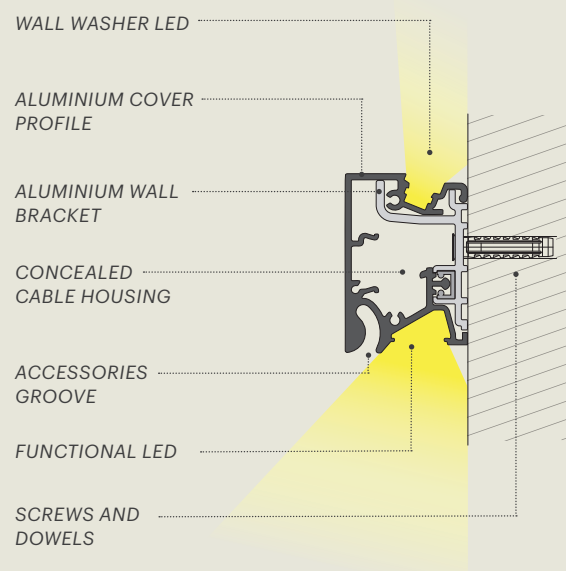
Bracket + Cover design, for quick and intuitive fixing

The cover (lamp) profile easily snaps onto a mounting bracket made of extruded aluminium, fixed to the wall by means of screws and dowels (included: the number varies based on the length of the lamp). The concealed internal compartment acts as a cable duct, a clever feature for electrification elements management. The cover profile is complete with plastic end caps.



Double LED light source with dedicated optics

Sign integrates a double **EDC Dual Color** LED light source: the upper one is a decorative Reel (**120 + 120 LEDs/m**) best used for wall washer effect, whilst the lower one is a more powerful LED Reel (**184 + 184 LEDs/m**) ideal for kitchen worktop functional lighting. On request the 120+120 LEDs/m Reel can be installed both for upper and lower lighting. The use of specially designed optics ensures an evenly distributed light output, with anti-glare effect.



Control of both LED sources via remote or with integrated IR sensor, available on request

Personalized lighting effects with MEC Driver, the power supply and receiving modules system, which allows individual or simultaneous remote control of both LED light sources. Switching, intensity adjustment and color temperature regulation at your will with L&S Smart control systems (such as wireless sensors and transmitters), via smartphone or voice control systems.



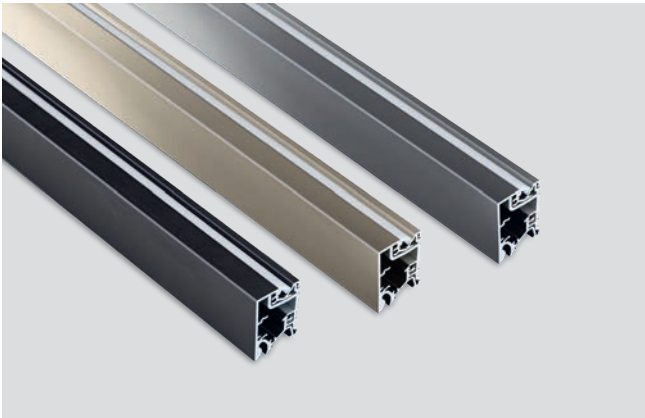


Easy integration into any environment

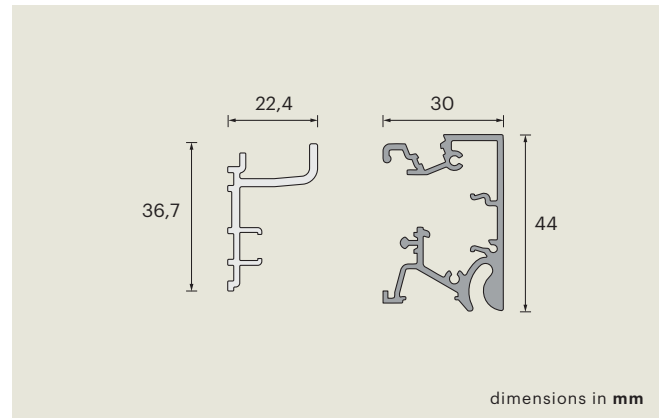
Sign is available both in standard or custom measures. On request it can also be provided with 45° angle cuts and special plastic corner joints, thus enabling architectural volumes to be followed, creating a continuous light & decoration effect.



Sign



03 Black ● Champagne ● Anthracite



SIGN - EDC - 24V DC		3000K÷4000K	
03	591500322	36,7W	1200mm
03	591500323	46,2W	1500mm
03	591500316	55,6W	1800mm
03	591500324	74,5W	2400mm
03	591500325	93,6W	3000mm
03	591500321	121,7W	3900mm

UPPER LED: 120+120 LEDs/m EDC
LOWER LED: 184+184 LEDs/m EDC

Upon request:

- IR sensor integrated in the profile
- Custom lenght (min.200mm / max.3900mm)
- Champagne or Anthracite finish

ACCESSORIES, POWER SUPPLY AND CONTROL

EMOTION JUMPER

The included cable allows colour temperature variation from 3000K to 4000K during installation



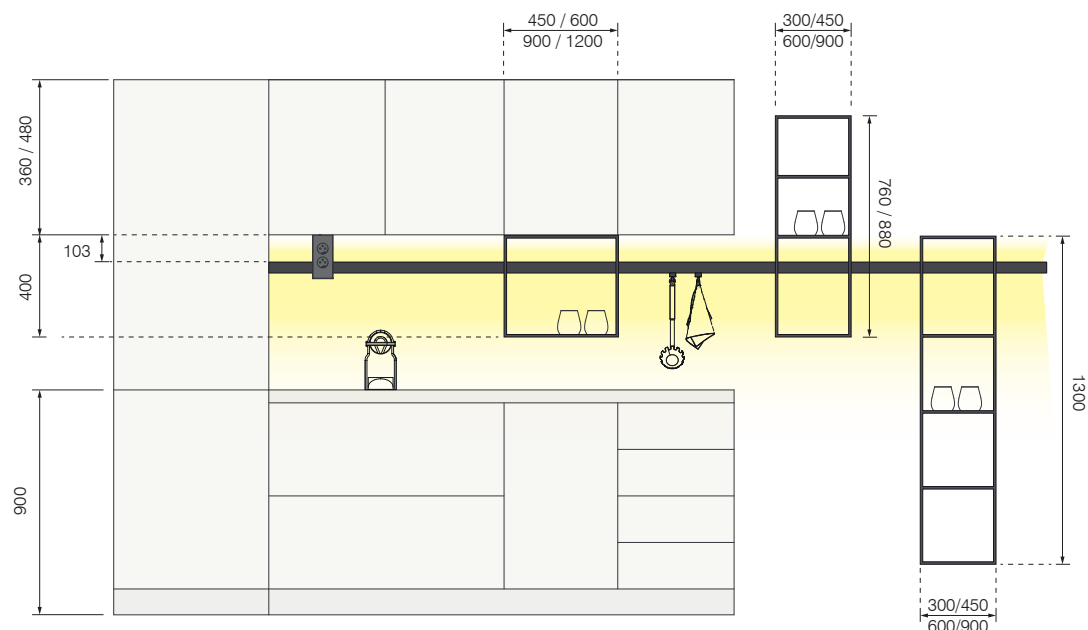
MEC LITE - MEC DRIVER

Modular power supply & control systems for 24V and 12V LED lamps



SMART SYSTEM

Wireless sensors and controllers for remote control of the LED lamps connected to control modules



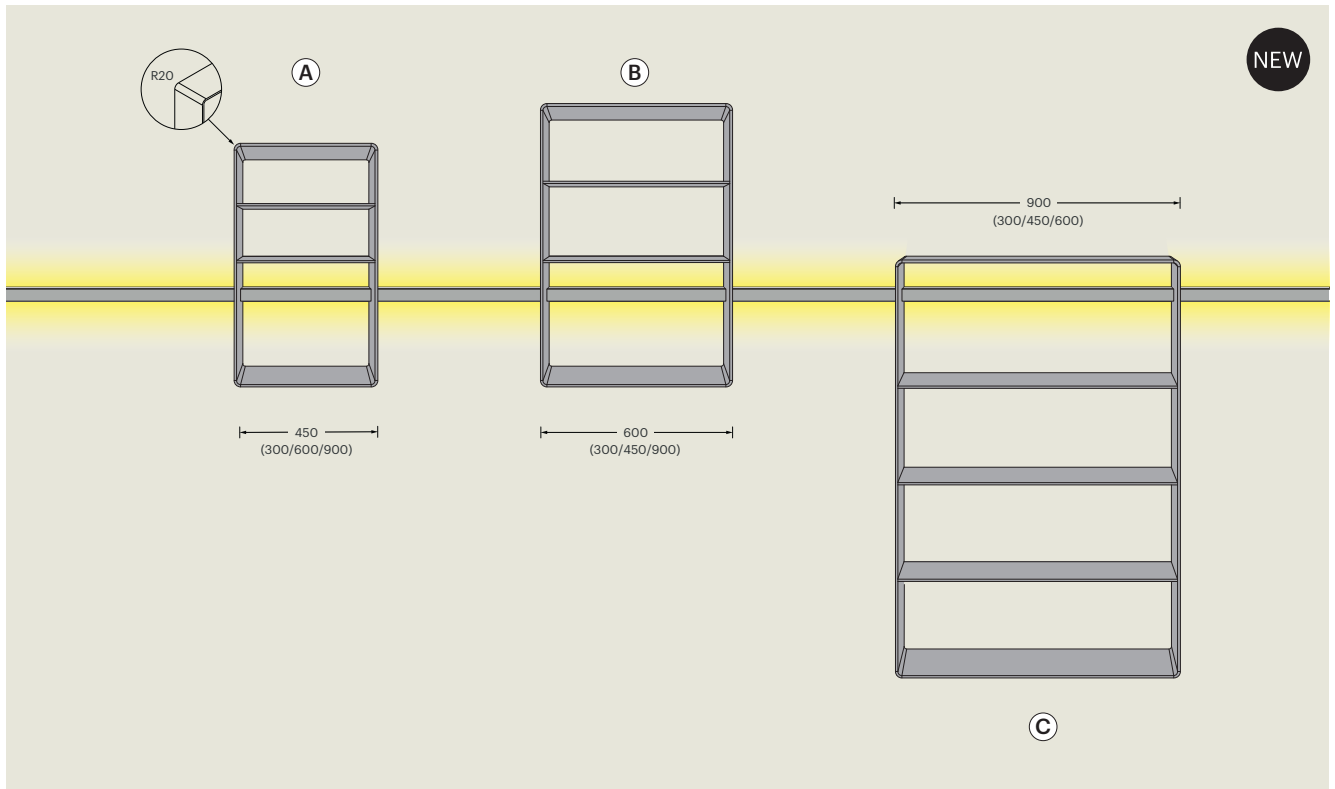
KITCHEN INSTALLATION EXAMPLE (dimensions in mm)







SIGN - Cabinet modules

**VERTICAL OPEN MODULES - Radius 20mm**

New design with rounded corners

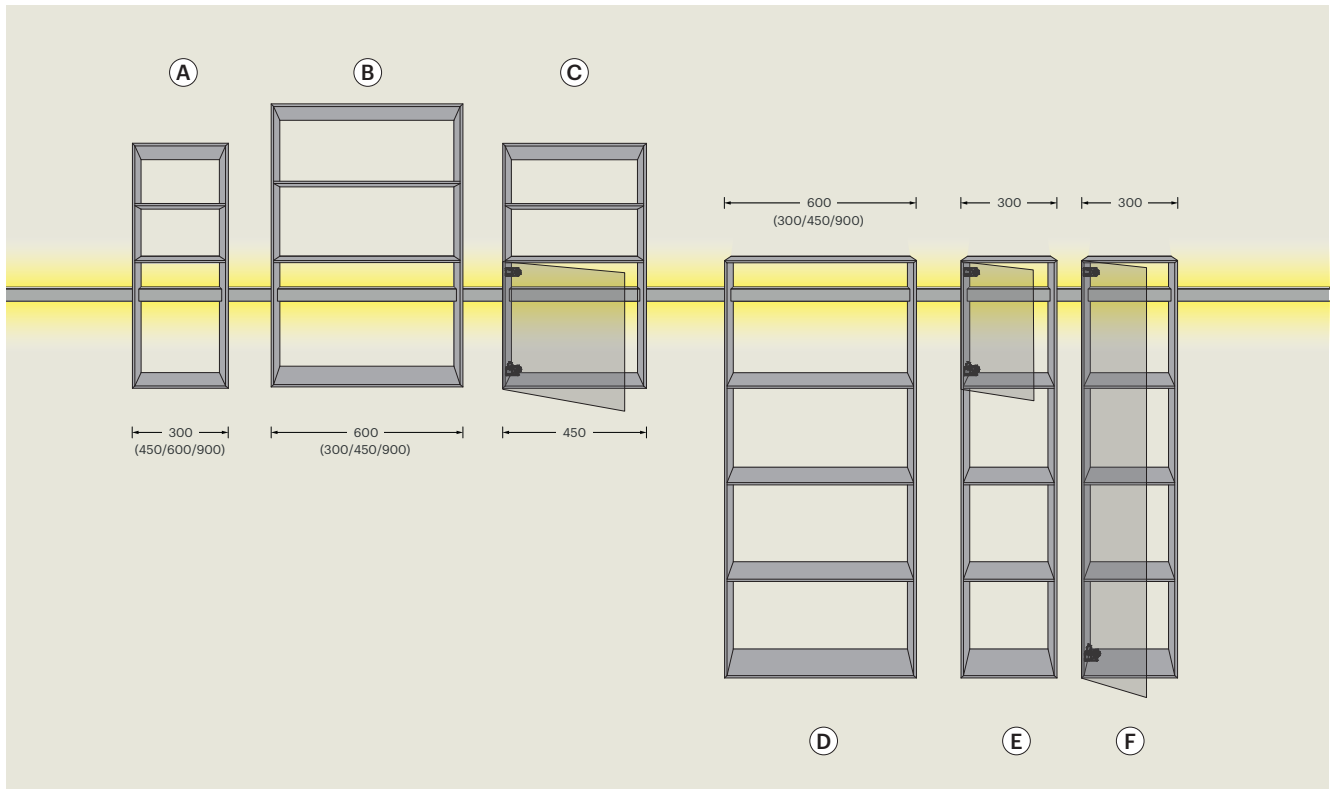
Snap-fit installation on Sign profile, made of black scratch-resistant brushed aluminium (other finishes on request).

Fixed depth: 150mm

A	3x Compartments	300 x 760 x 150mm	910700163
		450 x 760 x 150mm	910700166
		600 x 760 x 150mm	910700164
		900 x 760 x 150mm	910700165
B	3x Compartments	300 x 880 x 150mm	910700167
		450 x 880 x 150mm	910700168
		600 x 880 x 150mm	910700169
		900 x 880 x 150mm	910700170
C	4x Compartments	300 x 1300 x 150mm	910700171
		450 x 1300 x 150mm	910700172
		600 x 1300 x 150mm	910700173
		900 x 1300 x 150mm	910700174



SIGN - Cabinet modules

**VERTICAL OPEN MODULES**

Snap-fit installation on Sign profile, made of black scratch-resistant brushed aluminium (other finishes on request). Available provided with glass doors (different materials on request).

Fixed depth: 150mm

A	3x Compartments	300 x 760 x 150mm	910700048
		450 x 760 x 150mm	910700049
		600 x 760 x 150mm	910700050
		900 x 760 x 150mm	910700051
B	3x Compartments	300 x 880 x 150mm	910700052
		450 x 880 x 150mm	910700053
		600 x 880 x 150mm	910700054
		900 x 880 x 150mm	910700055
C	3x Compartments 1x Glass door	450 x 760 x 150mm	910700065
D	4x Compartments	300 x 1300 x 150mm	910700056
		450 x 1300 x 150mm	910700057
		600 x 1300 x 150mm	910700058
		900 x 1300 x 150mm	910700059
E	4x Compartments 1x Glass door	300 x 1300 x 150mm	910700066
F	4x Compartments 1x Glass door	300 x 1300 x 150mm	910700067

SIGN - Cabinet modules



HORIZONTAL OPEN MODULES - Radius 20mm

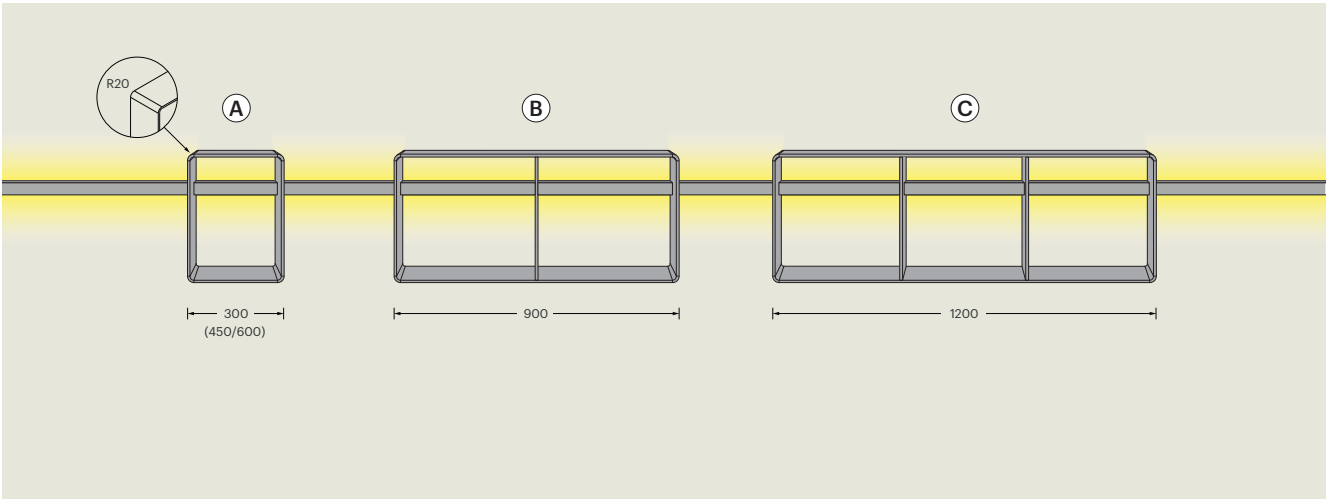
New design with rounded corners

Snap-fit installation on Sign profile, made of black scratch-resistant brushed aluminium (other finishes on request).

Fixed depth: 150mm

Fixed height: 400mm

A	1x Compartment	300 x 400 x 150mm	910700158
		450 x 400 x 150mm	910700159
		600 x 400 x 150mm	910700160
B	2x Compartments	900 x 400 x 150mm	910700161
C	3x Compartments	1200 x 400 x 150mm	910700162



SIGN - Cabinet modules

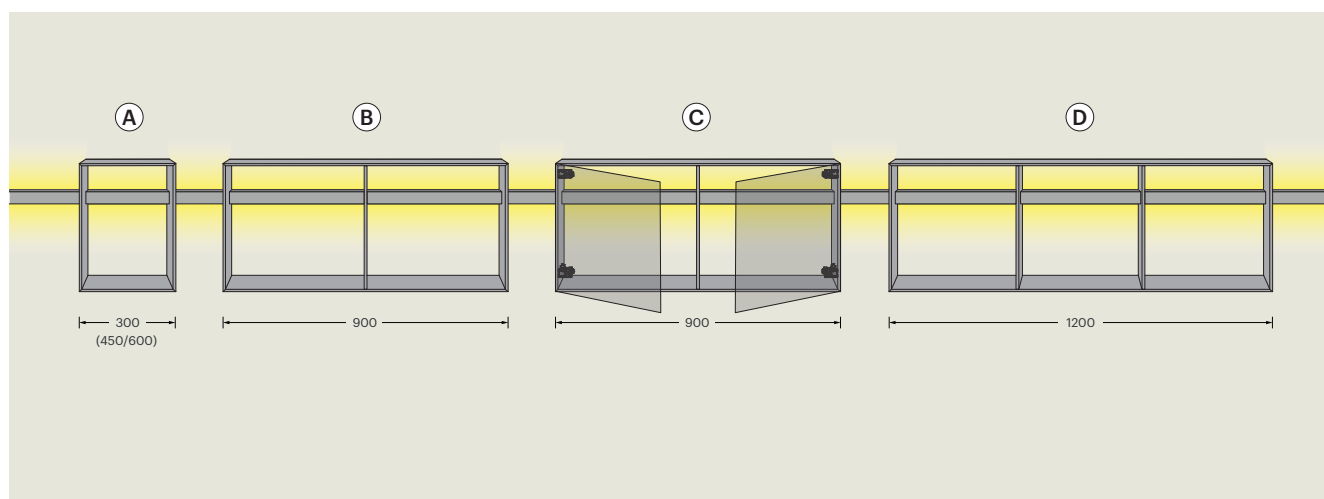
**HORIZONTAL OPEN MODULES**

Snap-fit installation on Sign profile, made of black scratch-resistant brushed aluminium (other finishes on request). Available provided with glass doors (different materials on request).

Fixed depth: 150mm

Fixed height: 400mm

A	1x Compartment	300 x 400 x 150mm	910700043
		450 x 400 x 150mm	910700044
		600 x 400 x 150mm	910700045
B	2x Compartments	900 x 400 x 150mm	910700046
C	2x Compartments 2x Glass doors	900 x 400 x 150mm	910700155
D	3x Compartments	1200 x 400 x 150mm	910700047



SIGN - Illuminated mirrors

**SIGN ROUND - Radius 60mm**

Bathroom mirror made of black scratch-resistant brushed aluminum, complete with high-efficiency LED perimeter light integrated into the structure and touch controls (ON-OFF / color temperature / anti-fog). Snap-fit installation on Sign profile. Other sizes on request.

900 x 600H x 150mm
LED EDC Dual Color
3000K-4000K

upon request

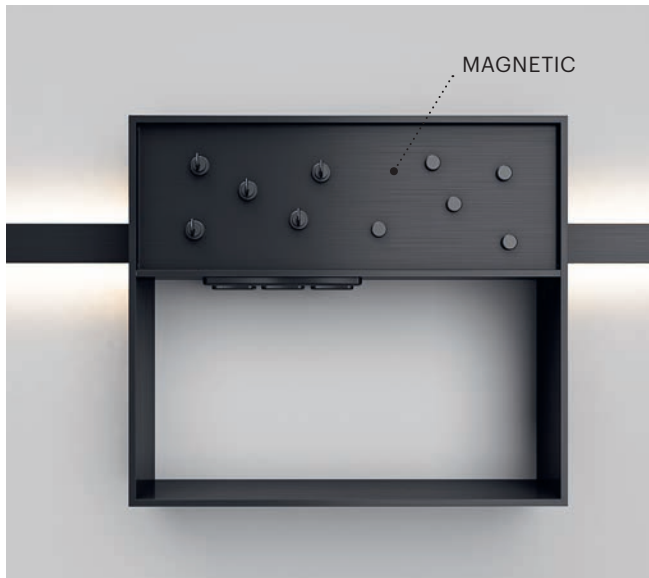
**SIGN ME**

Bathroom mirror made of black scratch-resistant brushed aluminum, complete with high-efficiency LED front light frame integrated into the mirror and touch controls (ON-OFF / color temperature / anti-fog). Snap-fit installation on Sign profile. Other sizes and finishes on request.

1200 x 800H x 150mm
LED EDC Dual Color
3000K-4000K

91701430300DMD

SIGN - Multifunctional modules

**MULTISIGN**

Multifunction module complete with Schuko sockets, USB sockets for charging devices and magnetic surface. Snap-fit installation on Sign profile. Made of black scratch-resistant brushed aluminium. Other configurations available on demand

1x Compartment

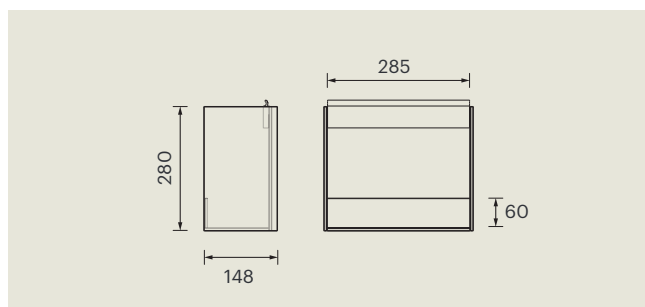
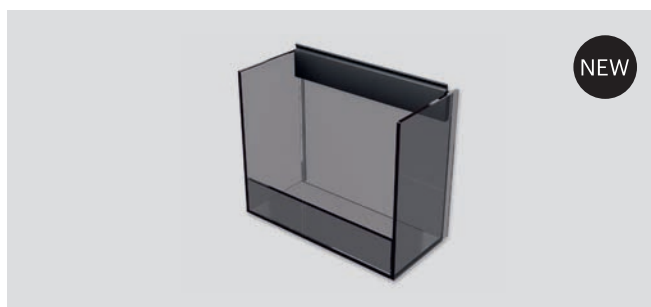
450 x 400H x 150mm

599800002

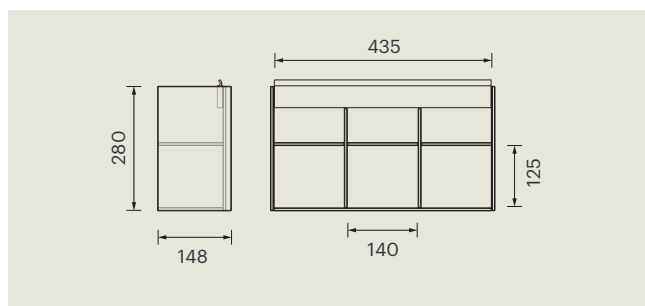
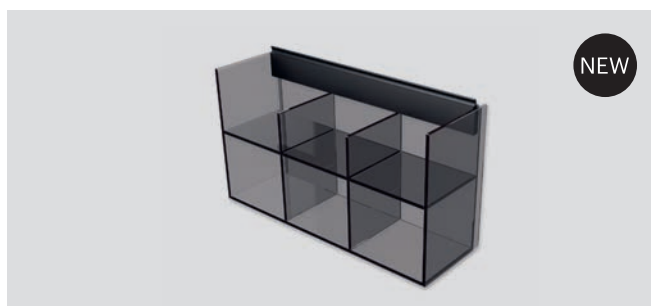




SIGN - Glass accessories

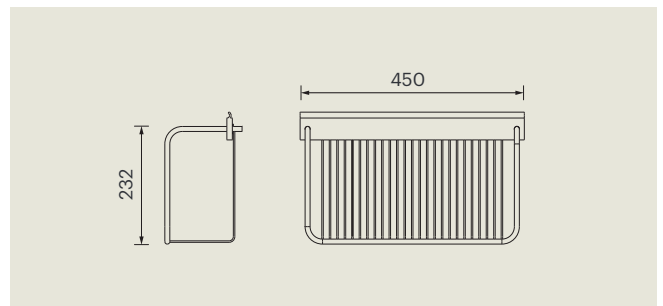
**GLASS STORAGE SHELF**Smoked glass and
black aluminium

on request

**GLASS STORAGE SHELF**Smoked glass and
black aluminium

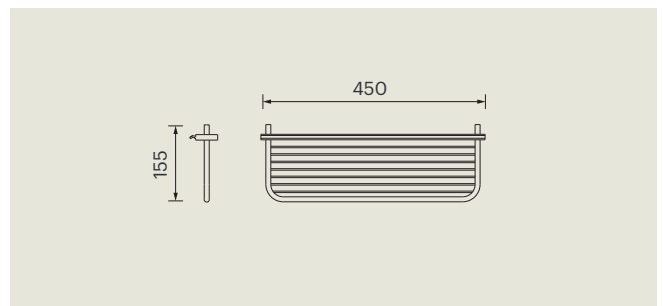
on request

SIGN - Metal wire accessories

**METAL WIRE STORAGE SHELF**

Black

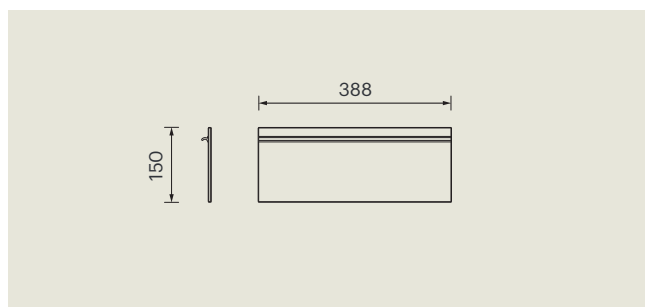
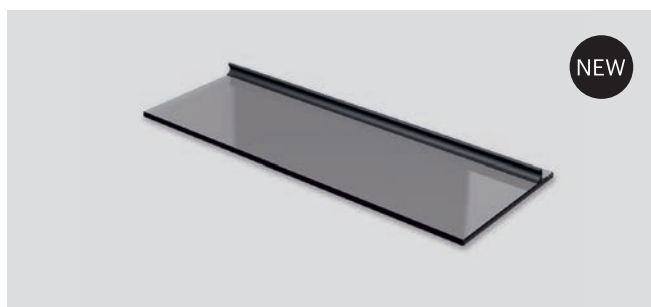
on request

**METAL WIRE SHELF**

Black

on request

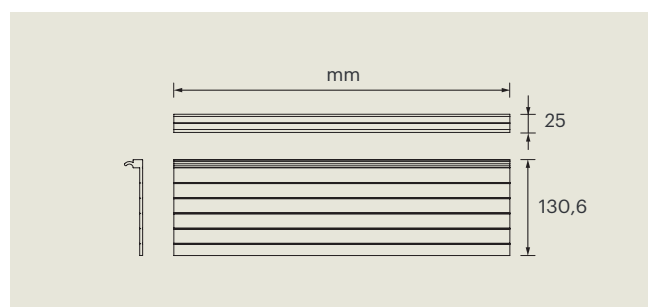
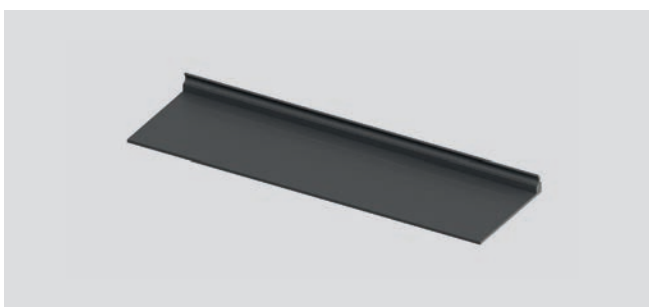
SIGN - Shelves

**GLASS SHELF**

Smoked glass and
black aluminium

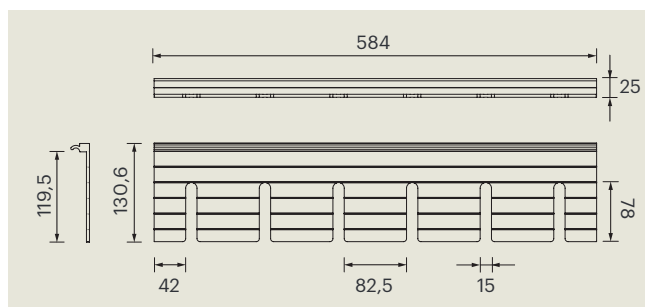
on request

SIGN - Shelves

**ALUMINIUM SHELF**

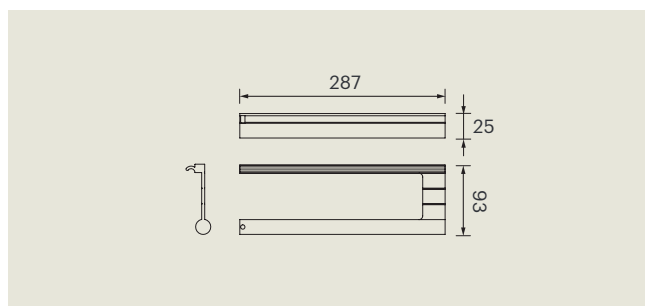
Black	284mm	598900033
	388mm	598900047
	434mm	598900049
	684mm	598900052
	884mm	598900054

SIGN - Kitchen accessories

**WINE GLASS HOLDER**

Black

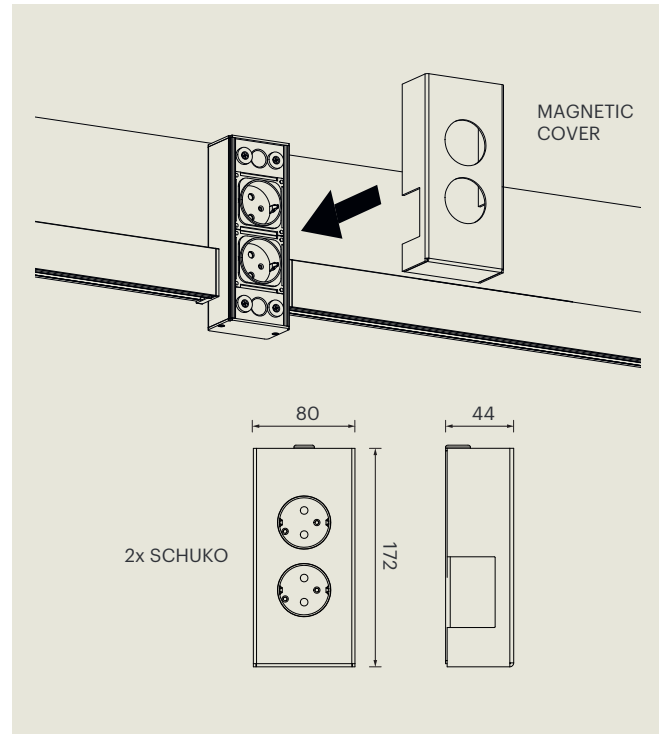
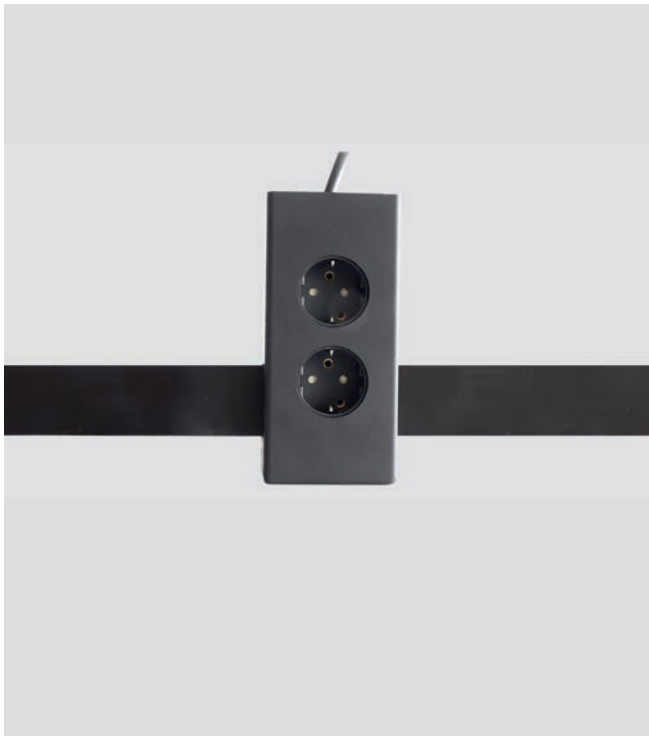
598800042

**PAPER ROLL HOLDER**

Black

598800019

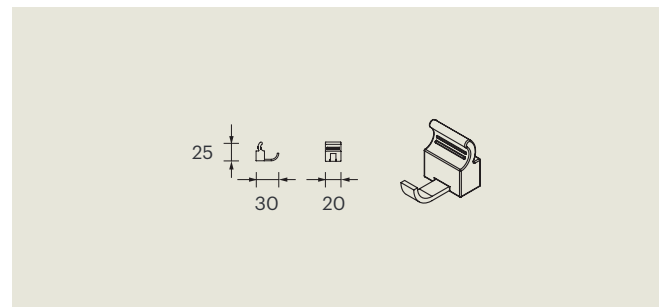
SIGN - Under cabinet socket

**MULTI SOCKET 220-240V AC**

Black

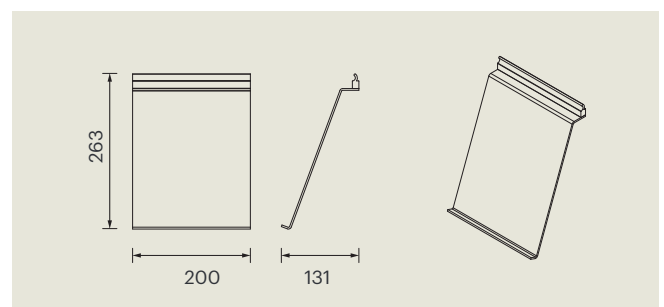
599600001

SIGN - Universal accessories

**HOOKS SET**

5x Black

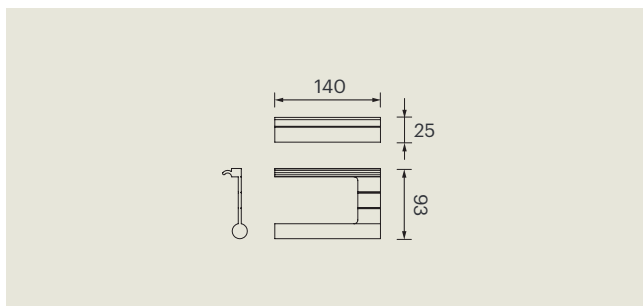
600900195

**TABLET HOLDER**

Black

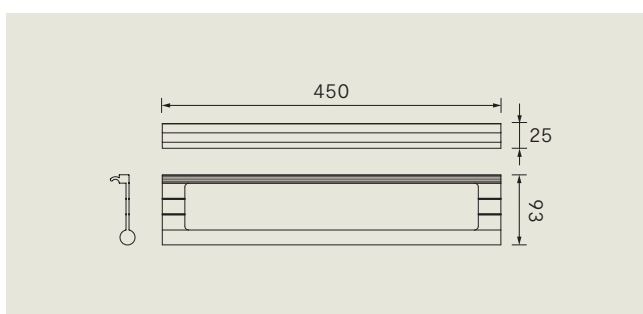
598800022

SIGN - Bathroom accessories

**TOILET PAPER HOLDER**

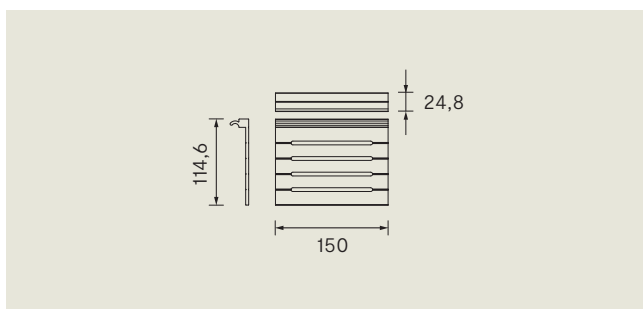
Black

598800023

**TOWEL HOLDER**

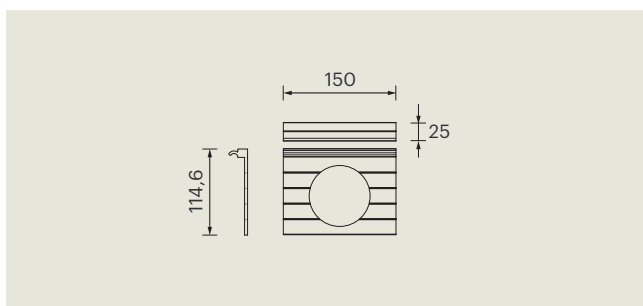
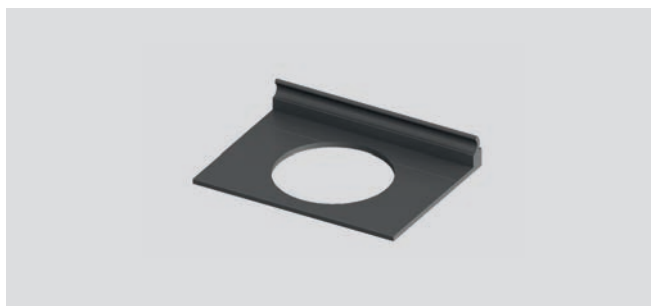
Black

598800025

**SOAP DISH**

Black

598900045

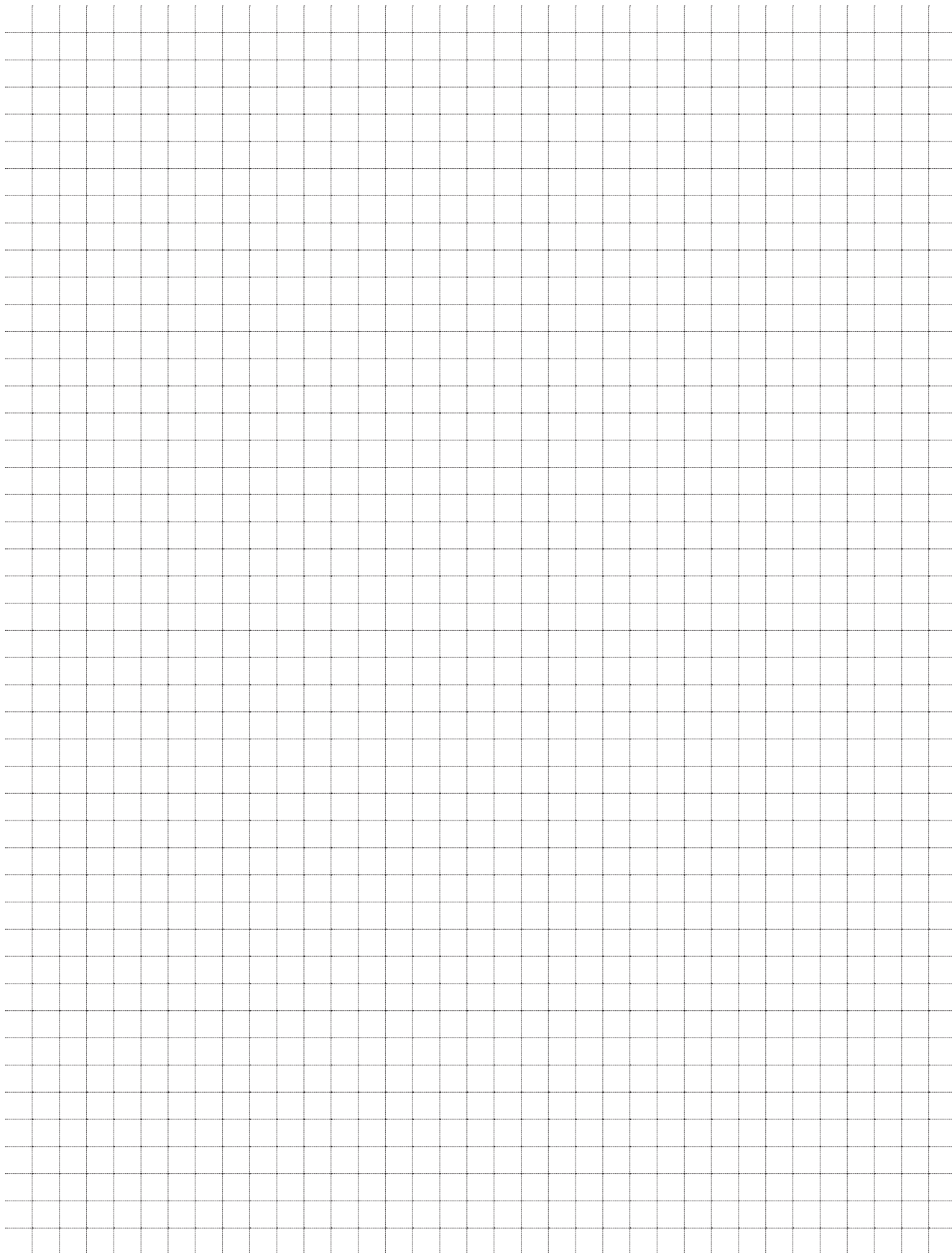
**TOOTHBRUSH CUP HOLDER**

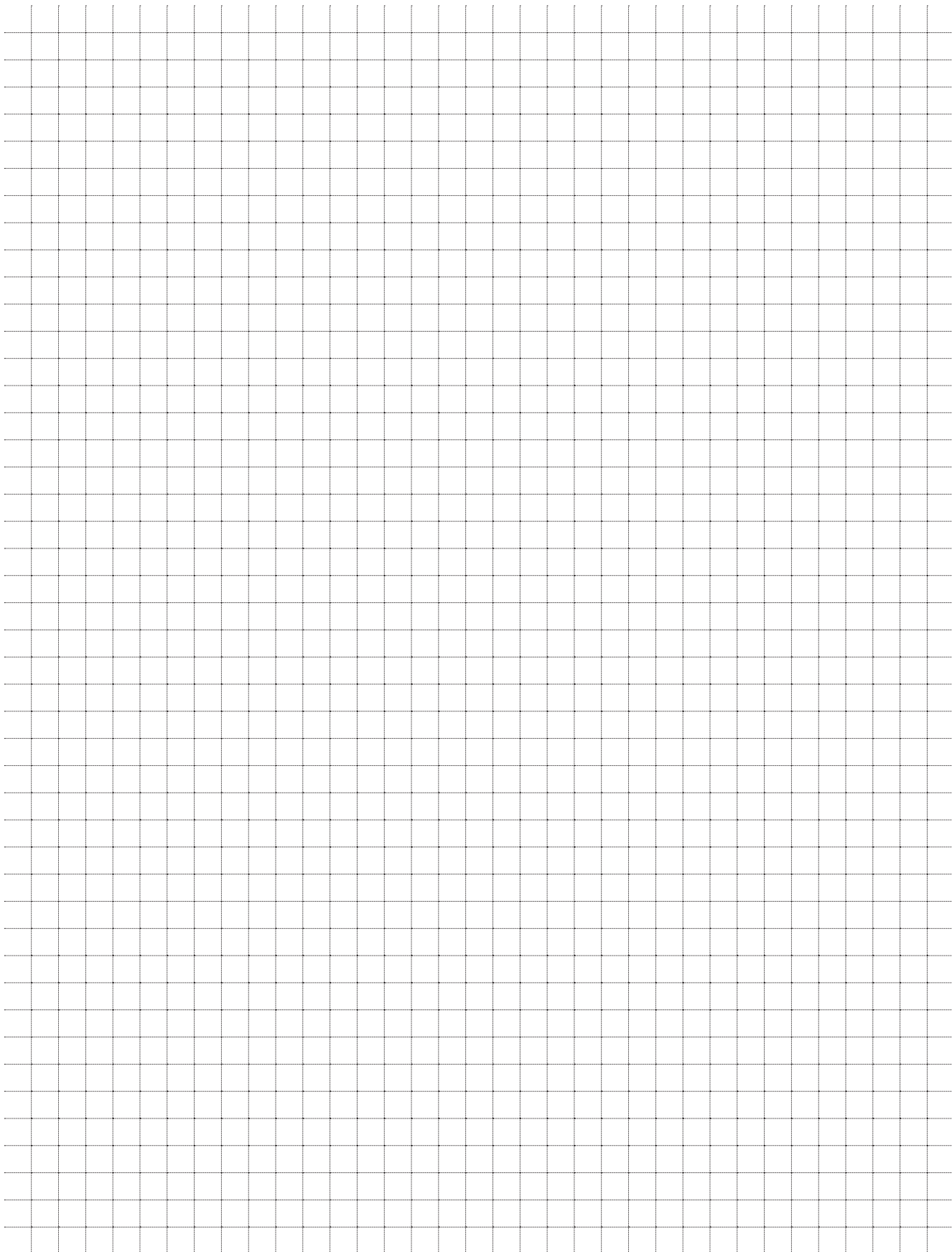
Black

598900044



NOTAS





The information in this catalog may be subject to errors.
The articles, their characteristics, data and dimensions
listed are not binding and may be subject to change
without prior notice from the company.

HEADQUARTERS

ITALY

Brugnera
Via L. Zanussi, 8
Maron di Brugnera (PN)
+39 0434 616611
info@ls-light.com

Varese
Via Pacinotti, 54
Varese (VA)
+39 0332 491247
info@formaefunzione.com

Tavullia
Via del Lavoro, 4
Tavullia (PU)
+39 0721 901123
info@italpek.it

Recanati
Via Armando Cingolani, 13
Zona Ind.le P.I.P.
Sambucheto di Recanati
Recanati (MC)
+39 071 0960086
sales@fluxitalia.com

OUR SUBSIDIARIES

GERMANY

**L&S Deutschland
GmbH**
Daimlerring, 34
Rödinghausen
+49 5223 8790-0
info@ls-light.de

CHINA

**LS Lighting
Equipment**
(Shanghai) Co., Ltd.
No. 255, LongPan Rd.,
Malu Town,
Jiading District, Shanghai
+86 021 69 15 67 91
info.china@ls-light.com

UNITED STATES

**L&S Lighting
Corporation**
1505 Pavilion Place, Suite A
Norcross, Georgia
+1 877 877 0757
info.us@ls-light.com

