

Contact us to request  
customized flyers  
for your school's  
program!

 **CUSTOM  
CRAFTWORKS**  
by Pivotal Health Solutions

## School Property Catalog

2020 | 2021



*Proudly*  
supporting  
schools and professionals  
since 1986

[CustomCraftworks.com](http://CustomCraftworks.com)

800.627.2387



Only  
18 lbs.



## Solutions Series Melody Portable Massage Chair

The Melody Massage Chair is ergonomically designed to offer maximum comfort to both client and practitioner. Sets up in seconds and folds for easy transport and storage. The flexibility of arm height and angle adjustments, an adjustable chest pad, removable sternum pad, adjustable headrest and seat height and angle adjustments help match your working height and fit your client perfectly.

**\$166**

each plus  
shipping

**\$142**

each plus shipping  
QTY. 10

## Melody Portable Massage Chair I9309

### Standard Features:

**Load Capacity:** 300 lbs.

17.5"W x 50"L x 44.5"H

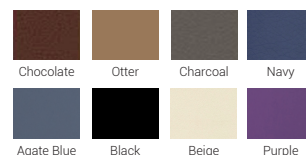
**Table weight:** 18 lbs.

Seat height and angle adjustments

Adjustable chest pad and head rest

Removable sternum pillow

### SOLUTIONS UPHOLSTERY CHOICES:



### Add a bolster!

See back page for  
more accessories

## Heritage Table I9301

### Standard Features:

**Load Capacity:** 550 lbs.

30"W x 73"L x 23-34"H

**Table weight:** 35 lbs.

Rounded corners

3" Multi-layer foam

## Solutions Series Heritage Table

The Heritage table offers rounded corners, dual knobs, a strong and flat working surface, and ergonomically designed Reiki end panels. The Heritage also provides ample working space for mobility all around the table.

**\$216**

each plus  
shipping

**\$185**

each plus shipping  
QTY. 10

### SOLUTIONS UPHOLSTERY CHOICES:



This feature filled table  
is an unbelievable value  
and the **#1 choice**  
among schools.



"As a massage educator, our school has used Custom Craftworks for years. The products are extremely easy to order, delivered in a timely manner, and in good, working condition. They offer great customer service and are always positive to interact with!"

**Jamie Laird, DSM**  
Iowa School of Beauty



## Solutions Series Luxor Table

The Luxor portable massage table was designed based on your feedback. It caters to your clients with luxurious premium features, such as a 3" foam featuring 3/4-inch memory foam and an ultra-soft face cushion. Even better, it's affordable.

**\$274**

each plus  
shipping

### Luxor Table

I9359

#### Standard Features:

**Load Capacity:** 550 lbs.

30"W x 73"L x 24-34"

**Table weight:** 35 lbs.

Rounded corners

3" Multi-layer foam with

3/4" memory foam

8" on center dual-end accessory ports

**\$235**

each plus shipping  
QTY. 10



The Luxor Table  
features 3/4"  
memory foam  
and ultra-soft face  
cushion!

#### SOLUTIONS UPHOLSTERY CHOICES:



Chocolate

Otter

Charcoal

Navy

Agate Blue

Black

Beige

Purple



## Destiny Lift Back Table

*19302*

### Standard Features:

**Load Capacity:** 450 lbs.

30"W x 73"L x 23-32"

**Table weight:** 43 lbs.

Rounded corners

2.5" Multi-layer foam

**Esthetician's  
favorite!**



**Signature**  
SPA SERIES  
by CUSTOM CRAFTWORKS

## Destiny Lift Back Table

Our most affordable lift back portable massage table, the Destiny table delivers multipurpose performance and accommodates all forms of traditional massage as well as reflexology, facials, and waxing.

**\$230**  
each plus  
shipping

**\$198**  
each plus shipping  
**QTY. 10**

#### SOLUTIONS UPHOLSTERY CHOICES:



*Classic Series*

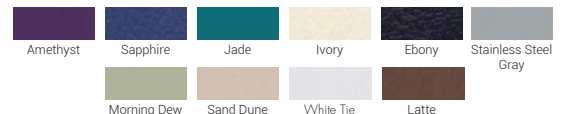
## Athena Essential Package

For more than 30 years, therapists have chosen the Athena portable massage table more than any other. This is the essential package to help you get started. We've combined our popular, Classic Series Athena table with a convenient carry case and dual-action face rest with pillow, which adjusts up and down.

#### CLASSIC SERIES UPHOLSTERY CHOICES:



#### NATURAL TOUCH UPHOLSTERY CHOICES:



## Athena Essential Package

*Essential AT28/30*

### Standard Features:

**Load Capacity:** 650 lbs.

28 or 30"W x 73"L x 25-35"

**Table weight:** 31 lbs. for 28",  
34lbs. for 30"

Shiatsu release cables

9" on center dual-end accessory ports

Reiki end panels on both ends

3" Multi-layer foam

### Package includes:

- Classic Series Athena Table
- Carry case
- Dual action face rest with pillow



Starting at  
**\$471**  
each plus  
shipping

Starting at  
**\$437**  
each plus shipping  
**QTY. 10**



# Solutions Series Challenger Aluminum Massage Table

The portable Challenger Aluminum Massage Table offers an aluminum frame with finger-joint craftsmanship and auto-hold hinge system. It will become the only table you want to travel with!

## Challenger Aluminum Massage Table I9391

### Standard Features:

**Load Capacity:** 600 lbs.

30"W x 73"L x 24-33"

**Table weight:** 30 lbs.

Rounded corners

3" Multi-layer foam



**Rugged yet lightweight  
and functional**

**\$288**  
each plus  
shipping

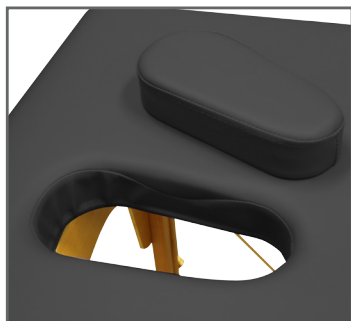
**\$247**  
each plus shipping  
QTY. 10

#### SOLUTIONS UPHOLSTERY CHOICES:



# Solutions Series Companion Table

The Companion table offers a strong and flat working surface and Reiki end panels on each end, increasing mobility all around the table. With the Shiatsu release cables, this table can easily lay flat on the floor. This feature filled table is an unbelievable value.



## Companion Table I9409

### Standard Features:

**Load Capacity:** 400 lbs.

28"W x 73"L x 23-32"H

**Table weight:** 30 lbs.

Nose hole and plug

2" Multi-layer foam



#### SOLUTIONS UPHOLSTERY CHOICES:



**This table is 28" wide and only 30 lbs.!**  
**Perfect for events, rentals and massage  
therapists on the go!**

**\$139**  
each plus  
shipping

**\$120**  
each plus shipping  
QTY. 10



# Stationary Series

## Aura Deluxe Stationary Table

Exclusive spas and clinics trust our Aura Deluxe Stationary Massage Table to provide incredible client comfort. Tailored as a high-end clinic or spa solution, our table features a manual hydraulic lift spring adjustment for both back and knee sections for easy and accurate positioning.

### Aura Deluxe Stationary Table

*I9339*

#### Standard Features:

**Load Capacity:** 550 lbs.

30" W x 72" L

Height range: 24-33"

76" Length with ankle extension

87" Length with ankle extension and  
face rest

Solid beech wood frame

3.5" Multi-layer foam

8" on center dual-end accessory ports

Rounded corners

Open shelf storage

Interlocking legs

#### Table includes:

- Solutions classic adjustable face rest with crescent pillow
- Salon head and neck support pillow
  - Removable side arms
    - Front arm sling
    - Ankle extension

#### AURA SERIES UPHOLSTERY CHOICES:



Chocolate

Otter

Charcoal

Black

Beige



**\$629**  
each plus  
shipping

**\$540**  
each plus shipping  
QTY. 5



**Accessories shown  
are included with  
your table!**



# Classic Series Pro Basic Electric Table

One of our most popular lines since 2009, the Pro Electric Massage Table offers smooth, silent lift, superior craftsmanship and excellent value. The classic design also includes a dual action face rest and pillow, 3-inch foam, plus a standard single foot pedal for height adjustment.

## Pro Basic Electric Table ELPro

### Standard Features:

- Lifting Capacity:** 550 lbs.
- 28", 30" or 33"W x 73"L x 18-34"H
- Standard single foot pedal
- 3" Deluxe wrap foam
- 9" on center dual-end accessory ports
- Durable precision cut steel base
- Whisper quiet lift system



**Table is ADA compliant**  
(Consult your tax professional about eligibility for a Section 44 ADA Tax Credit)

#### CLASSIC SERIES UPHOLSTERY CHOICES:



Starting at  
**\$1,045**  
each plus shipping

Starting at  
**\$971**  
each plus shipping  
QTY. 10



Contact us to request  
**customized flyers**  
for your school's  
products!

Ask us about student  
discounts after  
graduation!

**800.627.2387**

**sales@customcraftworks.com**



**CUSTOM CRAFTWORKS**  
by Proval Health Solutions



*Join the Conversation*

Sign up for our newsletter and follow us on social media!

Be the first to know about new products, webinars, events, promotions and more!

# Accessories



**I9395**  
Deluxe Electric Warmer Pad (29.5" x 73")  
**\$45 each | \$27 each (qty. 10)**



**I9323**  
Solutions Arm Extensions  
**\$51 each | \$31 each (qty. 10)**



**FP-SET**  
Fleece Pad Set (28" x 72")  
**\$39 each | \$24 each (qty. 10)**



**SHT SET 3pc**  
Deluxe Double Brushed Cotton  
Flannel 3 Piece Sheet Set  
**\$25 each | \$20 each (qty. 10)**



**OH+PB**  
Single Oil/Lotion Holster with 1 BPA-free  
pump bottle (Purple or Black)  
**\$10 each | \$7 each (qty. 10)**



**OHD+PB**  
Double Oil/Lotion Holster with  
2 BPA-free pump bottles  
**\$12 each | \$8 each (qty. 10)**



**FRC 3PK**  
Deluxe Double Brushed Cotton  
Flannel Face Rest Covers Pack of 3  
**\$11 (3 pk) | \$8.80 each (10 - 3pks)**



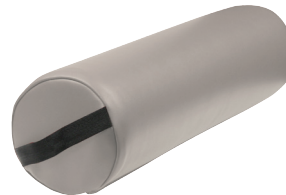
**FRC-16W**  
Sani-Covers (2 bags of 25)  
**\$10 each | \$60 (case of 10)**



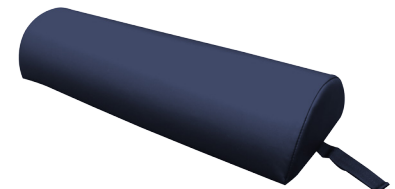
**FRC 30-50**  
Boxes of 50  
**COMING SOON!**



**I9393**  
Solutions Table Cart  
**\$70 each | \$42 each (qty. 10)**



**I9315**  
Solutions Round Bolster  
**\$30 each | \$18 each (qty. 10)**



**I9336**  
Solutions Half Round  
**\$32 each | \$20 each (qty. 10)**



**I9331**  
Solutions Hanging Armrest  
**\$31 each | \$19 each (qty. 10)**



**I9311**  
Solutions Folding Stool  
**\$51 each | \$31 each (qty. 10)**



**I9332**  
Solutions Rolling Stool  
**\$82 each | \$50 each (qty. 10)**



**I9310**  
Solutions Rolling Stool with Back  
**\$92 each | \$56 each (qty. 10)**