



Managed Services for Splunk



A better approach to Managed Services that puts you ahead.

Most MSP's are reactionary — identifying threats as they arise and neutralizing them. We do all those things while taking a proactive approach that helps maximize your investment in Splunk:

Architecture Diagnostics

Identifies architecture gaps and provides recommendations.

Interactive Workshops

Ongoing Splunk education for your team that expands your in-house capabilities and leverages KGI's deep domain expertise.

Forwarder Health

Proactive examination of your forwarders that makes sure the data you need is available when you need it.

Includes the Atlas Platform

The powerful Atlas Platform empowers you to navigate Splunk with confidence and find your way to business and operational success.

And that's just the beginning. Growth planning, Splunk upgrade assessments, security integrations review, and an included subscription to the Atlas Platform work together to put you ahead of threats and in the driver's seat with Splunk.

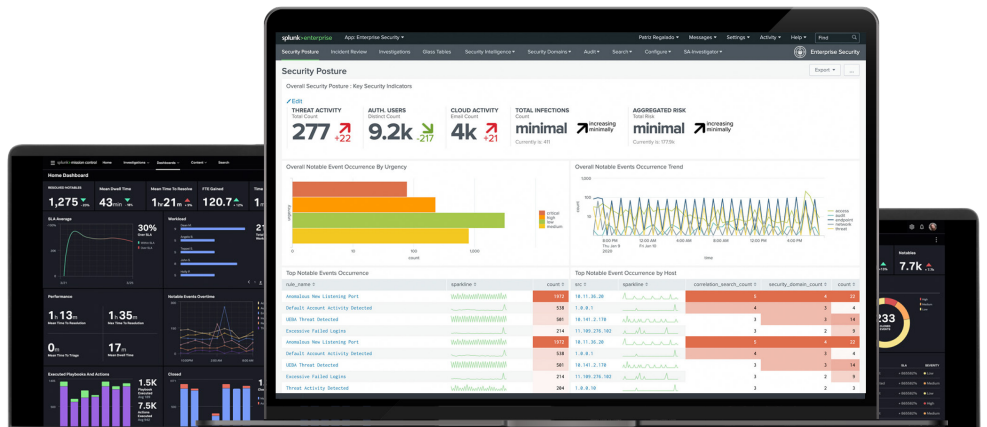
Splunk is a journey. We know the way.

Proactive Managed Services from Kinney Group's team of Splunk-certified experts generate results and provide solutions for every stage of your Splunk journey. Our team ensures reliable deployment, management, and monitoring of your Splunk environment with best practices that provide powerful insights and incredible performance. General administrative tasks along with Remote Management and Monitoring (RMM) are strengthened by 24/7 on-call support.

But let's be honest, these are "table stakes" with Splunk Managed Services. In the competitive business landscape you're in, you don't just need the bare minimum. You need a partner focused on offering you relief and helping you realize real returns on your investment. Kinney Group Managed Services for Splunk is here to help.

A paradigm change for Splunk Managed Services

The Kinney Group MSP offering disrupts traditional managed service offerings and sets a new standard for outsourced management of the Splunk platform. KGI's MSP offering combines world-class Splunk architecture support with the power of the Atlas Platform. The end result for Splunk customers is a managed service offering that is purpose-built to enable organizations to maximize their investments in Splunk, while also dramatically reducing costs associated with operating the platform.





What makes Managed Services from Kinney Group different?

✗ No “one-size-fits-all” approach

Your business needs are unique, so your managed services should be, too. We’ve developed a service that fills the gaps you need and fits your work flow.

✓ A proactive approach to Managed Services

Active security monitoring, rapid detection/inspection of threats, and accurate alerting are just the tip of the iceberg. Kinney Group sets you up to win with Splunk.

✓ Human, mission, and financial returns

Our team starts with the business outcomes you’re after in mind and then delivers with precision.

✓ Includes the Atlas Platform

The powerful Atlas Platform empowers you to navigate Splunk with confidence and find your way to business and operational success.

Expand your team with 60+ Splunk-certified professionals (for less than a single FTE*)

For many users of Splunk, the organization’s System Admin has to wear multiple hats, including Splunk Admin. This means — because they’re often so busy managing critical business applications and surviving the “day-to-day” — they often don’t have the bandwidth to get the full value out of the Splunk platform.

Managed Services for Splunk from Kinney Group, Inc. (KGI) is a force multiplier that provides you with a team of Splunk-certified professionals focused on helping you win with Splunk and delivering returns on your investment, fast.

Managed Services sized for your mission

Kinney Group Managed Services for Splunk are sized to best meet the needs of your organization, meaning you only pay for what you need, when you need it.

	Small (S)	Medium (M)	Large (L)	Custom
License size	51–100GB	101–500GB	501GB–5TB	5.01TB +
Forwarders	< 100	< 500	< 1,000	1,000+
Complexity	Simple	Moderate	Complex	Extreme
Skills Range	Splunk Certified Professionals			
Staff Range	MSP Team + Lead Analyst + CSM			+ Architect
MAC Hours	4	8	16	17+
Scope Range	Splunk Core/Cloud		+ Premium Apps	

About Kinney Group

Kinney Group has one of the deepest benches of Splunk expertise in North America. Since 2013, our team has provided a comprehensive Splunk customer experience across multiple disciplines including Splunk Enterprise, Splunk Enterprise Security (ES), IT Services Intelligence (ITSI) and custom use cases in the areas of compliance, IoT, and machine learning. Kinney Group highlights include:

- Splunk Elite Authorized Service Provider
- Splunk Award-winning Services Partner
- Experience with 600+ projects delivered nationwide and overseas
- Application development expertise for the Splunk platform
- More than 60+ Splunk-certified professionals on staff
- 100% U.S.-based staff, most with security clearances



Ready to start enjoying the journey? Let’s talk.

Unleash Splunk’s potential for your people, teams, and organization. To learn more about how Kinney Group’s Splunk certified professionals can serve you, please contact us..

(317) 721-0500

kinneygroup.com/msp