



SPLUNK IS A JOURNEY. ATLAS SHOWS THE WAY.

The Atlas™ Platform consists of:



Atlas Application Suite

The Atlas Platform's Application Suite speeds up powerful searches, helps you discover data sources, license utilization, missing forwarders and more, meaning your data and license usage is never in the dark.



Atlas Expertise on Demand

Expertise on Demand, Atlas' support component, is the fastest, easiest way to solve pressing challenges and extend the Splunk capabilities of your team. Get on-demand access to our team of 60+ Splunk-certified professionals.



Atlas Reference Designs

Next-generation reference architectures in Atlas can reduce indexer counts by 75% for on-prem environments, while providing a 10x performance increase.

splunk>partner+

Professional Services
Practice Partner

Do you know what your data is doing in Splunk?

More and more, organizations are realizing that Splunk is a journey. Getting the most from the platform as you continue to grow use cases and adopt Splunk throughout your organization creates some unique challenges, however. Are you really using all the data you're ingesting? Are your critical data sources and forwarders all online and reporting as they should? Is it possible to increase usage and performance not take a major hit?

Splunk is powerful. Atlas makes it easy.

Like any epic journey, you need a guide in Splunk — Atlas is a subscription platform that gives you a clear path forward on your Splunk journey with revolutionary datacenter architectures; personal, on-demand support; and an application suite that provides powerful insights, instantly. The platform brings new, innovative solutions to the Splunk community and enables scalable, consistent results.

If you're consuming your Splunk license too quickly, or search contention is wearing you down, Atlas is the guidance you've been waiting for, and makes next steps clear and easy.





Achieve more with innovative applications and utilities in an interface that's clean, easy to navigate, and — dare we say — fun to use

The Atlas Core Application is your hub of activity within the platform, including access to the Atlas Application Suite that simplifies daily tasks within Splunk. Like your favorite driving app, Atlas applications provide clarity and reduce friction in a few ways:



Data GPS™

Atlas Applications such as Data Management, Forwarder Awareness, and Data Utilization show you what data is coming in to Splunk, how (and if) it's being utilized, and alert you when forwarders or data drop unexpectedly.



Traffic Control™

Busy systems experience traffic jams and issues that can grind productivity to a halt. Atlas Applications such as Scheduling Assistant and Scheduling Inspector make sure you can keep data moving smoothly and effectively.

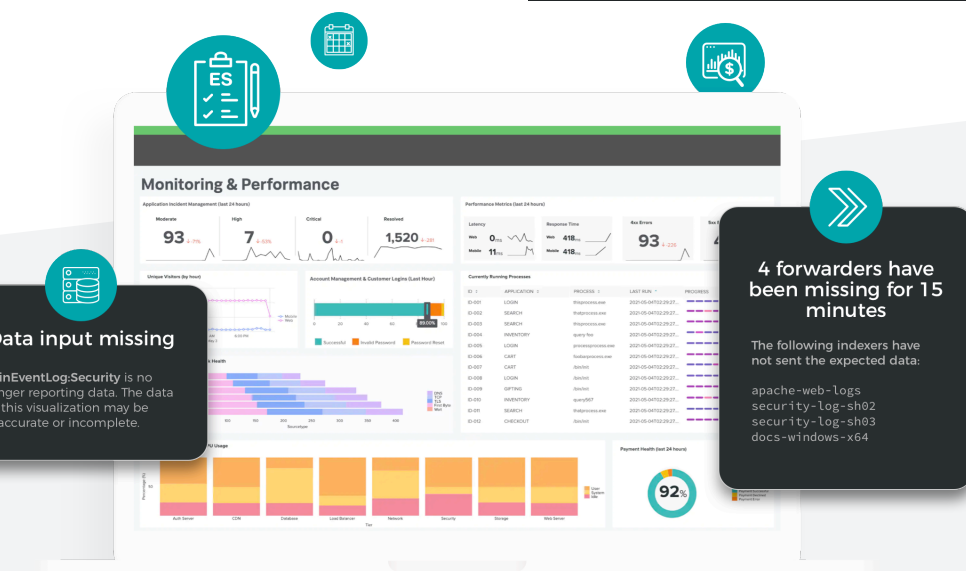


Fast Lane™

Tasks like Splunk Cloud Migration, implementing Enterprise Security, powerful searches, and compliance can be completed in a fraction of the time with applications like ES Helper, Search Library, Cloud Migration, and STIG Compliance.

Explore Atlas Applications

Visit kinneygroup.com/atlas to learn more about applications, or the Atlas Knowledgebase (kb.kinneygroup.com) for hands-on tutorials and insights.



The Atlas Platform currently includes several premium applications that make life easier in Splunk today, and we're just getting started. A subscription to Atlas means you'll automatically receive new apps as they're released, and have the ability to preview apps in development through the Kinney Group Beta Program.

On-prem? You're going to love Atlas Reference Designs

Reference Designs from Kinney Group provide everything on-prem users of Splunk Enterprise need to create high performance, incredibly efficient, and modern Splunk deployments that scale. Utilizing modern infrastructure components and Kinney Group's engineering expertise, these reference designs represent substantial reductions in physical footprint

Up to 75% reduction in physical indexers

Do more with less — Atlas Reference Designs utilize a fraction of standard Splunk Validated Architectures

10x performance boost

Fewer indexers doesn't mean less performance. Our tests show a boost of 10x in search performance

Lower Total Cost of Ownership

Better performance and lower costs mean Atlas Reference Designs have something for everyone from boardroom to the datacenter to be excited about.



Atlas Expertise on Demand is your personal guide to a smoother journey with Splunk.

Atlas Expertise on Demand (EOD) provides access to our team of Splunk-certified experts via a set amount of hours each month (consumable in increments as small as 15 minutes). EOD provides customers with immediate access to expert assistance with (but not limited to):

- Splunk dashboards, reports, data models, and custom use cases
- Best practices for design, implementation, and operation of Splunk
- Knowledge transfer of Splunk platform expertise to aid your engineering teams for troubleshooting, advanced Q&A, and other best practices

It's the support resource you need, whenever you need it most. Backed by the best team of Splunk-certified professionals available.

Custom training, exclusive content, and events tailored to your organization's needs

Atlas Expertise on Demand has helped organizations struggling with Splunk adoption and buy-in to transform their utilization through a variety of training and "lunch and learn" style events, custom-tailored to their unique use cases. Covering topics such as dashboarding, search, Splunk features, indexing, and best practices in a variety of areas, our team will help you develop and execute an education and engagement program to get Splunk widely-utilized and delivering on the business outcomes you need.

About Kinney Group

Kinney Group has one of the deepest benches of Splunk expertise in North America. Since 2013, our team has provided a comprehensive Splunk customer experience across multiple disciplines including Splunk Enterprise, Splunk Enterprise Security (ES), IT Services Intelligence (ITSI) and custom use cases in the areas of compliance, IoT, and machine learning. Kinney Group highlights include:

- Splunk Elite Authorized Service Provider
- Splunk Award-winning Services Partner
- Experience with 600+ projects delivered nationwide and overseas
- Application development expertise for the Splunk platform
- More than 60+ Splunk-certified professionals on staff

Get started with Atlas

Ready to find your way with Splunk? Reach out to your Kinney Group representative to schedule a 20-minute discovery session and demonstration.



(317) 721-0500



kinneygroup.com/atlas