

WHAT TO EXPECT WHEN YOU PAIR THE BEST DUMP TRUCK DISPATCH TECHNOLOGY WITH A MARKETPLACE

NO ONE SAID THE CONSTRUCTION INDUSTRY WAS A SMOOTH ROAD.

Finding haulers is only half the battle. Efficiently managing your business is the other half.

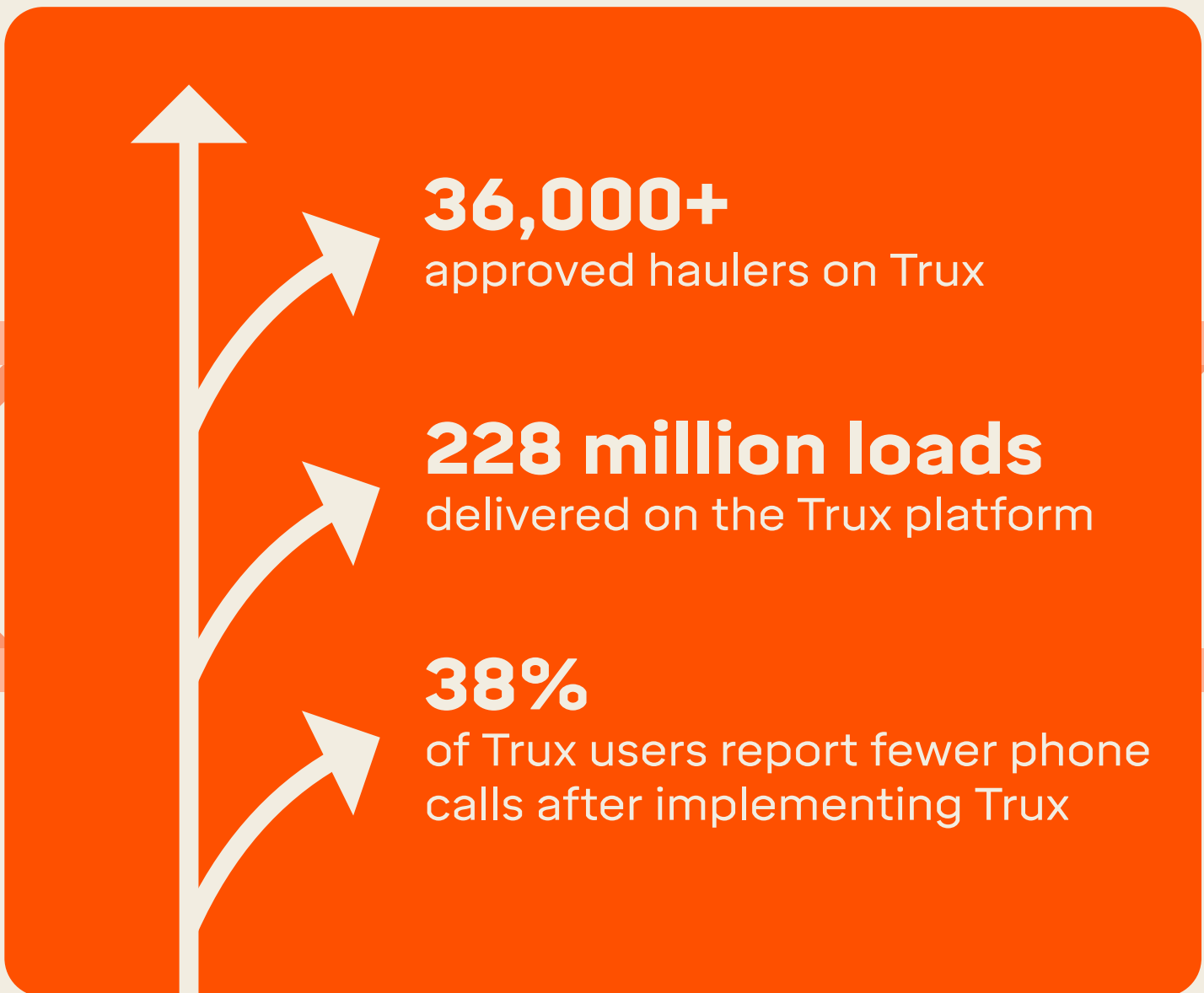


FIND HAULERS WITH TRUX



Don't be a statistic.

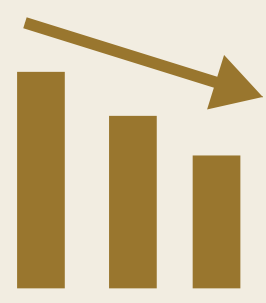
72% of civil contractors foresee difficulty in finding skilled workers in 2022¹



"Last weekend, I needed to scramble before a storm to complete a project. I was able to bid the job out and get 17 trucks on one job and 5 on another."

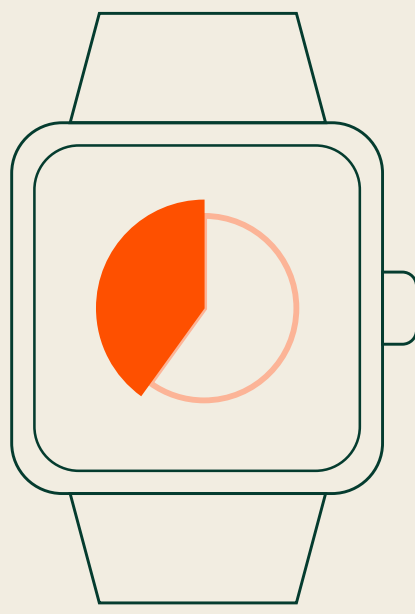
John Carney, Harness LLC
Columbia, TN

STREAMLINE OPERATIONS



25% DECREASE IN TIME

In 2020, companies using Trux were able to unload more efficiently at jobsites, spending an average of 25% less time performing the same tasks.

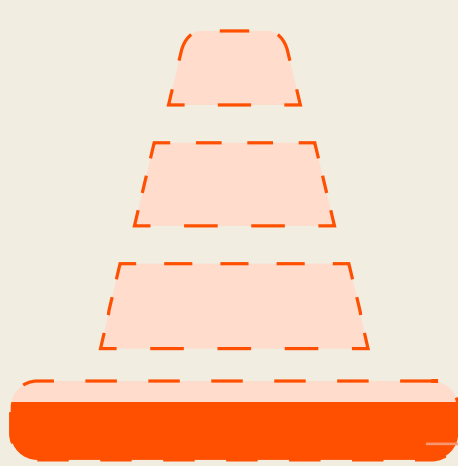


40% TIME SAVED WITH TRUX'S DIGITAL DISPATCH



1.5 HRS SAVED

Per hauler/week on office tasks



25%

Only 25% of construction projects are completed on time. **GPS fleet tracking helps businesses stay on track.**⁴

THE POWER OF THE TRUX MARKETPLACE & THE TRUX PLATFORM COMBINED

35%

of contractors turned down work because of labor shortages in 2021 - use Trux to find the haulers you need²

6%

reduction in billing errors and delays through electronic access to digital load slips



\$\$\$

an average Trux customer saves \$39,000 simply by digitizing tickets³

IMPROVE THE CUSTOMER EXPERIENCE

"When a foreman from a construction site calls and asks, "Where's my truck?," all I have to do is look at Trux to be able to provide an accurate answer."

- Ashly Bollman, Dispatcher, 3531 Trucking Inc.

READY TO GET A HANDLE ON HAULING?

Talk to one of our operations experts today to find out how you can benefit.

SCHEDULE A DEMO

www.truxnow.com • sales@truxnow.com • 1-800-485-1304

1 - <https://www.forconstructionpros.com/business/press-release/22018014/dodge-construction-network-72-of-civil-contractors-foresee-difficulty-in-finding-skilled-workers-in-2022>

2 - <https://www.forconstructionpros.com/asphalt/news/21509289/thirtyfive-percent-of-contractors-turning-down-work-due-to-labor-shortage>

3 - Based on a company with \$1.5M in annual trucking earnings

4 - <https://assets.kpmg/content/dam/kpmg/pdf/2015/04/global-construction-survey-2015.pdf>