



Jobsite Safety and Security

As a leading supplier of fence solutions, Master Halco is dedicated to providing a broad range of products that support your business and help drive success. Introducing our new line of Temporary Fence Panels featuring the following benefits:

- *1 3/8", 1 5/8" 16 Gauge Framing*
- *Hardware Styles Designed with Tension Rods and Clips*
- *Laced Styles Threaded Every Diamond*
- *Highest Quality Prime Materials No Seconds*
- *Fabric Sized to Fit Frame Eliminating Snags*
- *Custom Jobs Available*
- *No Truckload Minimums*

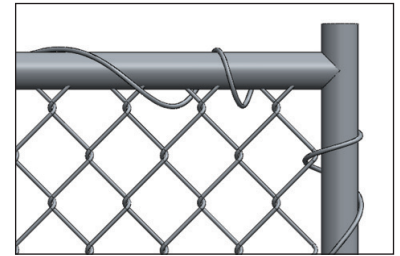
Master Halco Temp Panels are constructed to the highest quality, which ensures more rentals per panel and higher revenues for you. Check with your local Master Halco branch representative to see which styles are stocked in your market.

Temporary Fence Panels

Laced

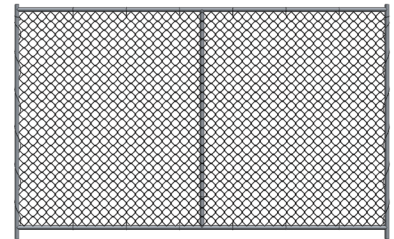
1 3/8" Frame 2 3/8" Diamond 11.5GA Fabric Vertical Support

Part#	Description	Per Bundle / Skid	Weight Ea.
071075	10'W x 6'H	10 / 70	54
071076	12'W x 6'H	10 / 70	59
071061	10'W x 6'H+1 Row Barb	10 / 70	50
625U00	12'W x 6'H with Rings	10 / 70	67
343U00	14'W x 6'H with Rings	10 / 70	73



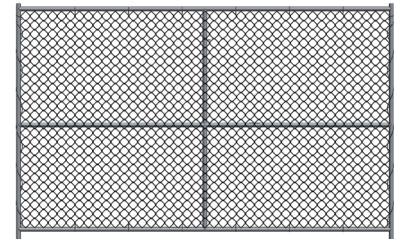
1 5/8" Frame 2 3/8" Diamond 11.5GA Fabric Vertical Support

Part#	Description	Per Bundle / Skid	Weight Ea.
010495	10'W x 6'H	10 / 70	66
010496	12'W x 6'H	10 / 70	76



1 3/8" Frame 2 3/8" Diamond 11.5GA Fabric T Brace

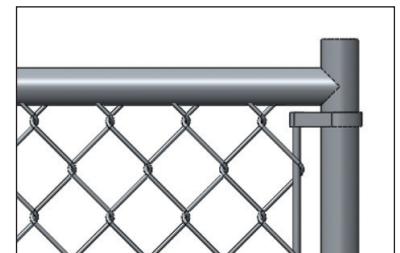
Part#	Description	Per Bundle / Skid	Weight Ea.
071079	10'W x 6'HT Brace	10 / 70	53
071080	12'W x 6'HT Brace	10 / 70	59



Hardware

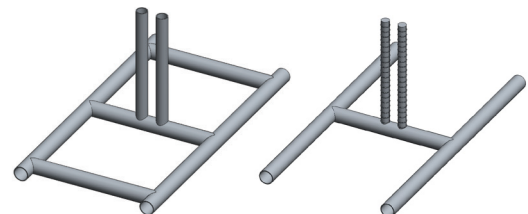
1 3/8" Frame 2 3/8" Diamond 11.5GA Fabric Vertical Support

Part#	Description	Per Bundle / Skid	Weight Ea.
071077	10'W x 6'H	10 / 70	52
071078	12'W x 6'H	10 / 70	58
071053	10'W x 8'H	10 / 70	68



Stands

Part#	Description	Weight Ea.
071060	1 3/8" H Frame with Rebar Stubs	7
071074	1 3/8" Bent Frame with Pipe Stubs	10
010497	1 5/8" Bent Frame with Pipe Stubs	12



Panel Clamps

Part#	Description	Weight Ea.
015516	1-3/8 x 1-3/8" Clamp	0.5
010707	Carriage Bolt 3/8" x 2 1/4"	0.08
015517	1-5/8 x 1-5/8" Clamp	0.5
010708	Carriage Bolt 3/8" x 2 1/2"	0.08



A Tradition of Fencing Solutions

888-643-3623

MasterHalco.com