

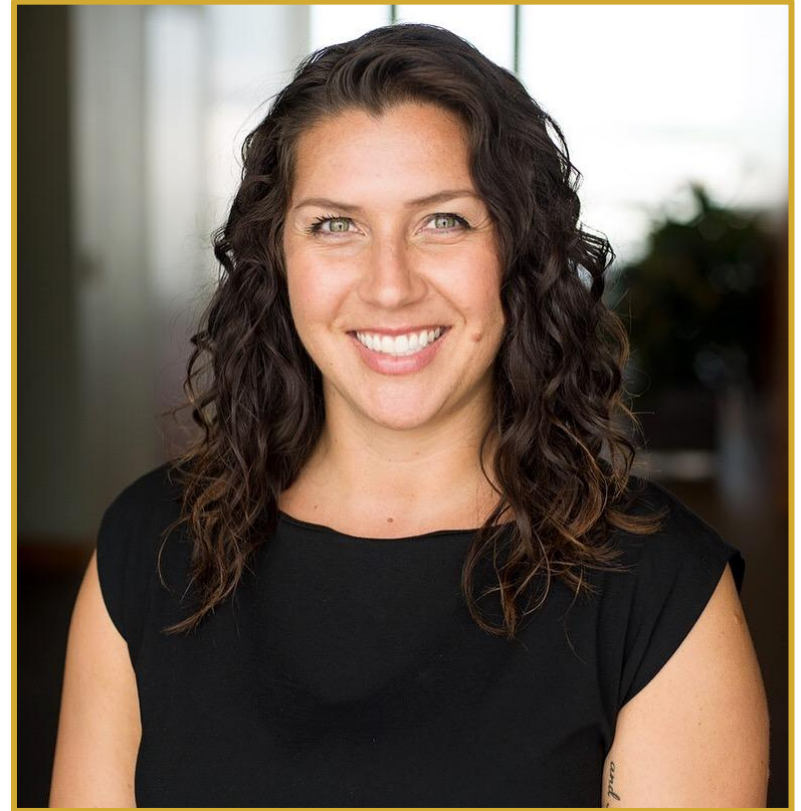
Branching Minds **MTSS** Summit

Branching Forward: Setting Intentions for
MTSS in the New Year

Leading for Equity
Dr. Lauryn Mascareñaz

Hi!

Dr. Lauryn Mascareñaz
RISE DEI Consulting, LLC



Bright Spots

1

Lead

2

Learn

3

Let's Do This

We cannot talk about equity in schools until we talk about the fact that schools were **never designed to be equitable in the first place.**



Lead

SPECIFIC

When you don't know
what harbor you are
headed for, no wind is the
right wind.

INTENTIONAL

All the angles
Human factor

SHIFTS

Work with what you
have already- those are
the systems



Learn

A large yellow geometric shape, resembling a triangle or a parallelogram, is positioned on the left side of the slide, extending from the top-left corner towards the center.

1. Elementary

Shifting current practice to create
a more inclusive school
environment

Words Matter

Your Child Is
NOW TARDY!

Please **PARK** your car and
COME INSIDE to sign
him or her in at the office.

¡Su Hijo
LLEGÓ TARDE!

Por favor **ESTACIONE SU
AUTO y ENTRE EN
LA OFICINA** para firmar
por él o ella.

Words Matter

WELCOME

We're so glad you're here!

***PLEASE ENTER WITH YOUR
CHILD AND SIGN THEM IN.***

¡Estamos muy contentos
de que estén aquí!

***INGRESE CON SU ESTUDIANTE
Y REGISTER SU LLEGADA.***

A large yellow geometric shape, resembling a triangle or a parallelogram, is positioned on the left side of the slide, extending from the top-left corner towards the center.

2. Middle

Intentional course placement and
combating bias

Current Practice

- Cutoff threshold for enrollment in advanced math
- “Automatic” enrollment
- Human Factor

Shift

- 15% of range for threshold
- Audit enrollment
- Bias work

A large yellow geometric shape, resembling a triangle or a parallelogram, is positioned on the left side of the slide, extending from the top-left corner towards the center.

3. High

Specific conversations and expectations

From team to all

- Equity team or similar
- Sole responsibility
- Impact on entire system?

- Multiple entry points
- No pre-work
- Think outside the article
- Food, coffee, etc
- Socialize the conversations
- Expectations for involvement



Let's Do This

Racial Equity Impact Analysis Tool

Who does this work for?
Who does this not work for?

Thanks!



www.risedei.com

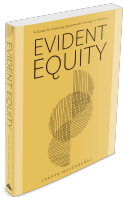


riseforequity@gmail.com



[@rise_dei](https://twitter.com/rise_dei)

[@laurynmaria](https://twitter.com/laurynmaria)



[Evident Equity](#)

Amazon, Solution Tree, Barnes & Noble

Before you go...



Sign up to the resources digest to receive the recordings bit.ly/BRMsignup



Follow us on Twitter
[@BranchingMinds](https://twitter.com/BranchingMinds)



Like us on Facebook
facebook.com/branchingminds/



Follow Branching Minds on LinkedIn
www.linkedin.com/company/branching-minds