

MEDI 

MEDICAL AND AGED CARE

UNISEX NON REVERSIBLE SCRUB TOPS

M88000

UNISEX SCRUB TOP WITH POCKETS



Dark Blue



Left chest pocket
with pen divide

Two front lower pockets



NEW COLOURS



Mid Night Blue



Dark Green



Light Blue

Features

- Two front lower pockets
- Left chest pocket with pen divide
- Side splits
- Reinforced stress points

Fabric 65% Polyester
35% Cotton
155 gsm

Size XS - 5XL



UNISEX NON REVERSIBLE SCRUB PANT

M88002

UNISEX SCRUB PANT WITH POCKETS



Elastic waist with
fabric ties



Dark Blue



NEW COLOURS



Mid Night Blue



Dark Green



Light Blue

Features

- Jet side pockets
- Elastic waist with fabric ties
- Reinforced stress points

Fabric

65% Polyester
35% Cotton
155 gsm

Size

XS - 5XL





UNISEX REVERSIBLE SCRUBS

UNISEX REVERSIBLE SCRUBS

M88010

REVERSIBLE UNISEX SCRUB TOP WITH CONTRAST TRIM



Dark Blue

Features

- Mid blue trim
- Two front lower pockets
- Left chest pocket with pen divide
- Side splits
- Reinforced stress points

Fabric	65% Polyester 35% Cotton 155 gsm
--------	--

Size	XS - 4XL 5XL
------	-----------------



M88012

REVERSIBLE UNISEX SCRUB PANT WITH POCKETS



Dark Blue

Elastic waist with
fabric ties



Features

- Back patch pocket
- Elastic waist with fabric ties
- Reinforced stress points

Fabric	65% Polyester 35% Cotton 155 gsm
--------	--

Size	XS - 4XL 5XL
------	-----------------



REVERSIBLE UNISEX SCRUB PANT DRAWSTRING ONLY

M88013

REVERSIBLE UNISEX SCRUB PANT WITH DRAWSTRING



Dark Blue

Drawstring waist with fabric ties



Features

- Drawstring waist
- Fabric ties
- Back patch pockets
- Reinforced stress points

Fabric	65% Polyester 35% Cotton 155 gsm
--------	--

Size	XS - 4XL 5XL
------	-----------------



WARM UP JACKET

M81755

WARM UP JACKET



Dark Blue

Features

- Stud front
- Knit cuffs
- Front lower patch pockets
- Reinforced stress points

Fabric	65% Polyester 35% Cotton 155 gsm
--------	--

Size	S-2XL
------	-------



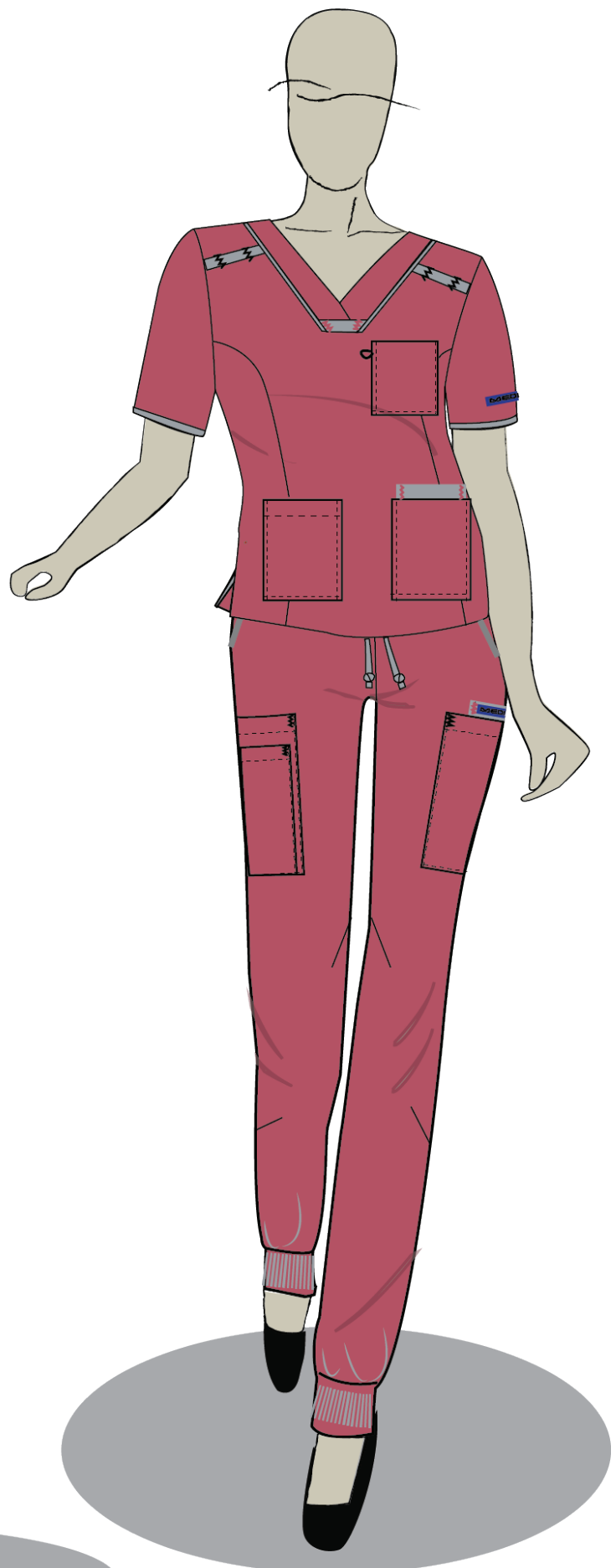
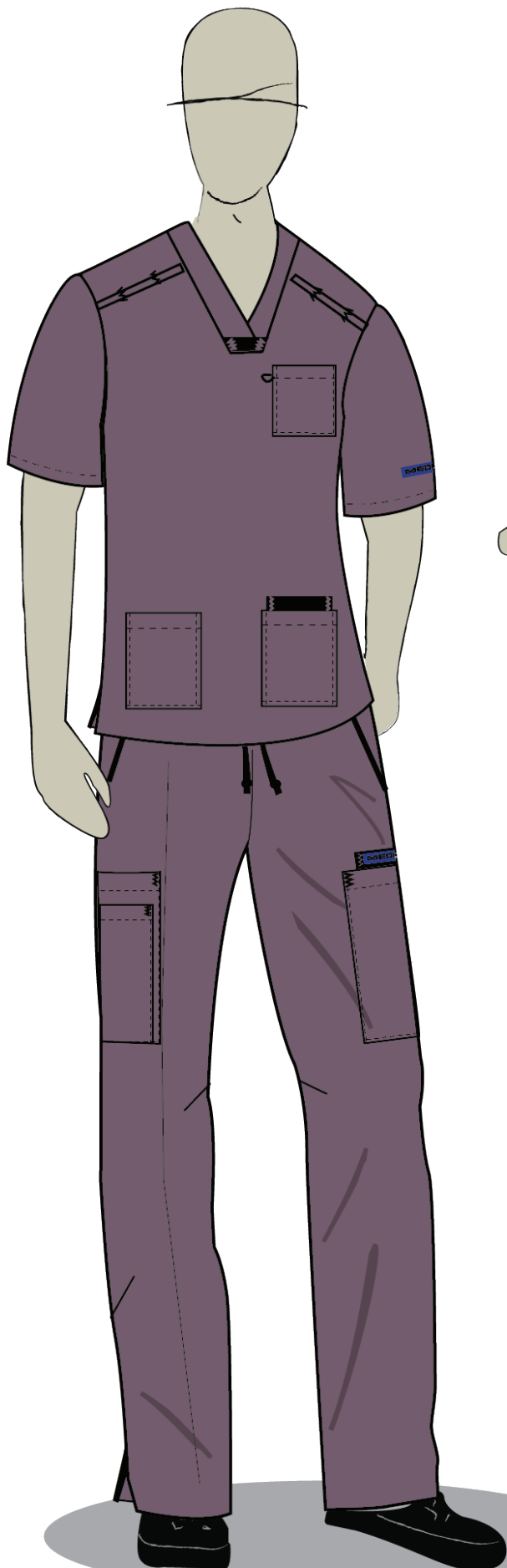
knitted cuffs



Stud front



STRETCH SCRUBS

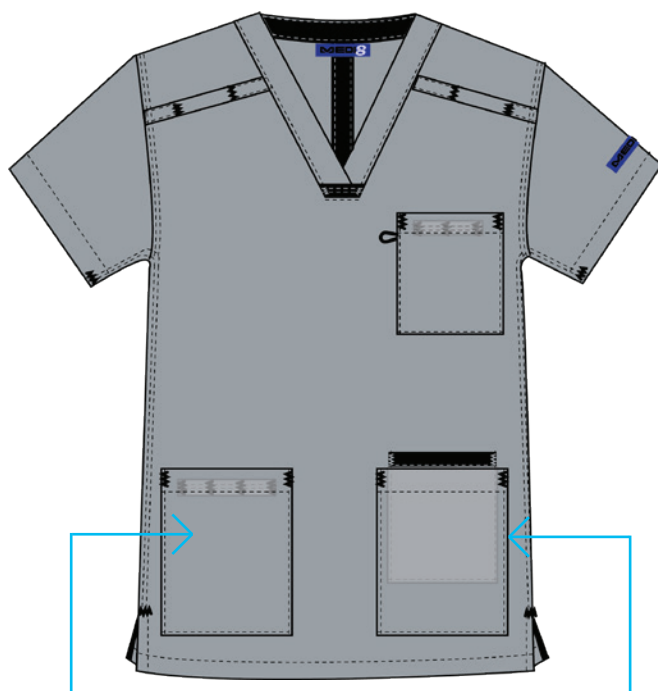


UNISEX STRETCH SCRUB TOPS

NEW

M88025

UNISEX SCRUB TOP - STRETCHABLE



RHS hip pocket with internal herringbone tape divider

LHS hip pocket with internal contrast fabric pocket

Steel/ Black



Black/ Steel



Black/ Plum



Blue/ Navy



Plum/ Black



Navy/ Blue



Steel/ Black

Features

- Body fabric shoulder loops
- Contrast fabric neck loop
- LHS chest pocket with internal herringbone tape divider
- Black elastic key loop on the chest pocket
- RHS hip pocket with internal herringbone tape divider
- LHS hip pocket with internal contrast fabric pocket
- Side split with herringbone tape
- Twin needle top stitching on all main seams
- Herringbone tape is colour co-ordinated with different size label
- Action back pleat under the yoke

Fabric 63% Polyester
34% Cotton
3% Spandex,
155gsm

Size XS - 5XL

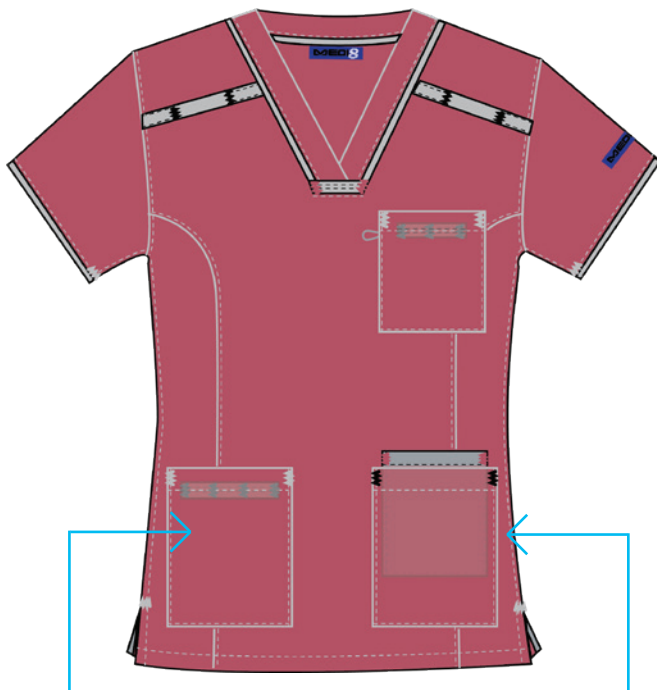


LADIES STRETCH SCRUB TOPS

NEW

M88026

LADIES SCRUB TOP - STRETCHABLE



RHS hip pocket with internal herringbone tape divider

LHS hip pocket with internal contrast fabric pocket

Claret/ Steel



Black/ Steel



Black/ Plum



Blue/ Navy



Plum/ Black



Navy/ Blue



Steel/ Black

Features

- Contrast fabric shoulder loops
- Contrast fabric neck loop
- LHS chest pocket with internal herringbone tape divider
- Black elastic key loop on the chest pocket
- RHS hip pocket with internal herringbone tape divider
- LHS hip pocket with internal contrast fabric pocket
- Side split with herringbone tape
- Princess line seam for better fit
- Herringbone tape is colour co-ordinated with different size label
- Action back pleat under the yoke

Fabric 63% Polyester
34% Cotton
3% Spandex,
155gsm

Size XS - 5XL

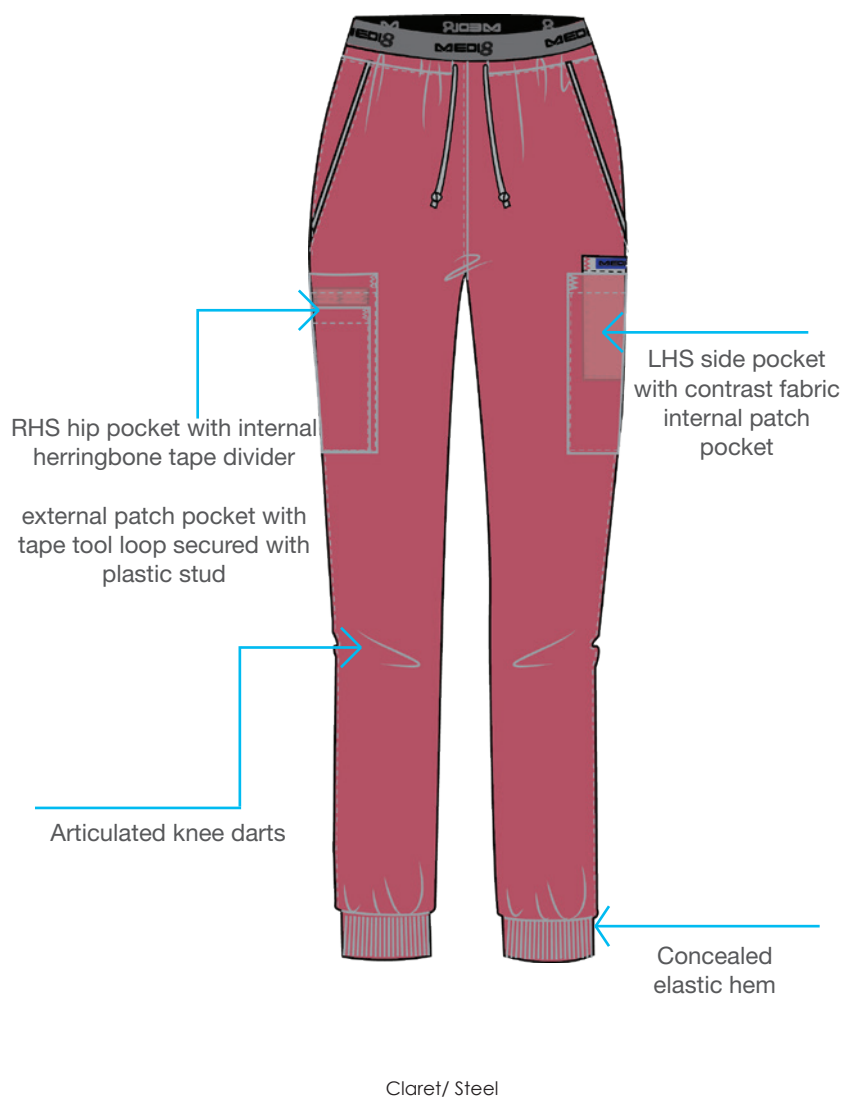


STRETCH SCRUB PANTS

NEW

M88027

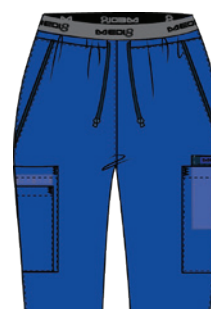
UNISEX JOGGER SCRUB PANT - STRETCHABLE



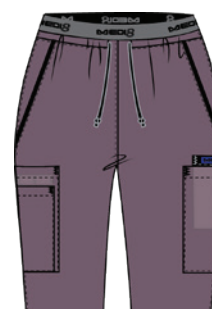
Black/ Steel



Black/ Plum



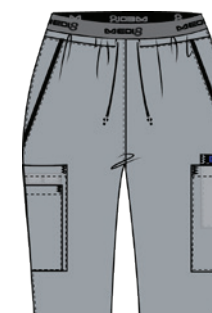
Blue/ Navy



Plum/ Black



Navy/ Blue



Steel/ Black

Features

- MEDI8 brand jacquard elastic waistband
- Contrast drawstring cord under elastic waistband
- Side slant pockets with contrast trim edge
- RHS side pocket with internal herringbone tape divider and external patch pocket with tape tool loop secured with plastic stud
- LHS side pocket with contrast fabric internal patch pocket
- RHS hip pocket
- Articulated knee darts
- Concealed elastic hem
- Herringbone tape is colour co-ordinated with different size label

Fabric 63% Polyester
34% Cotton
3% Spandex,
155gsm

Size XS - 5XL

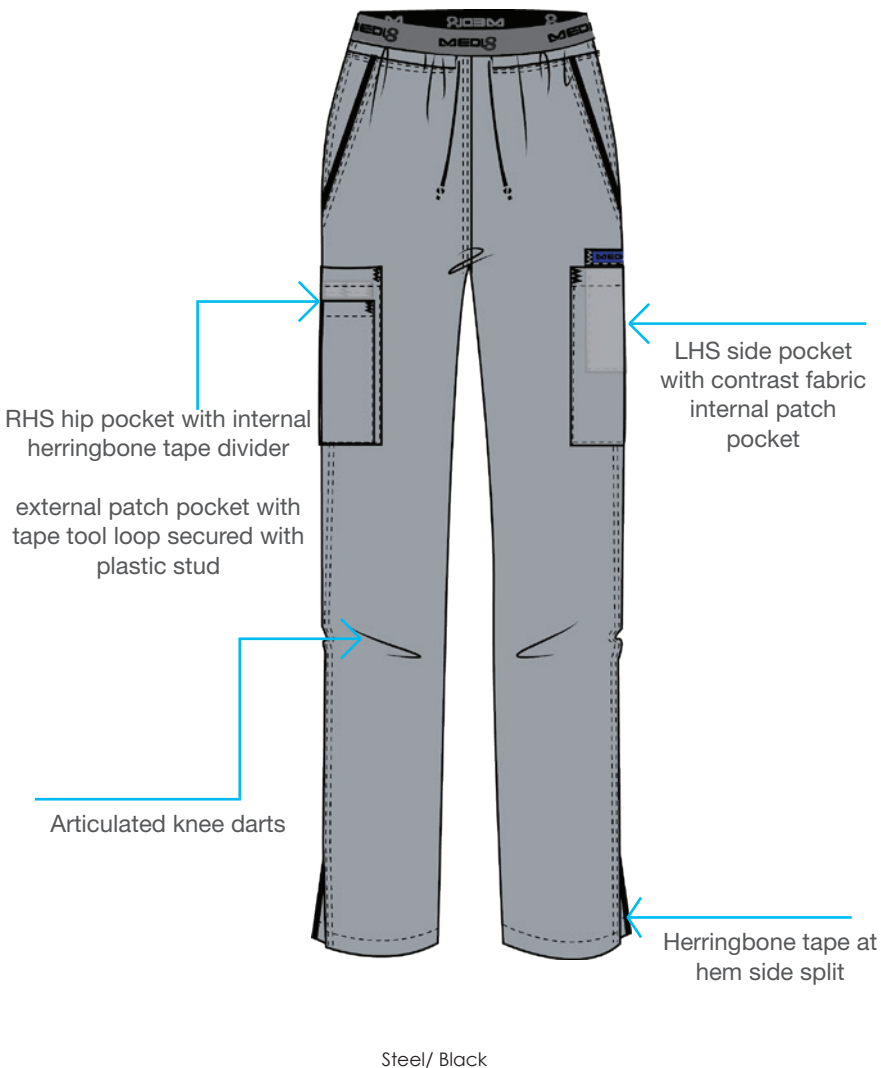


STRETCH SCRUB PANTS

NEW

M88028

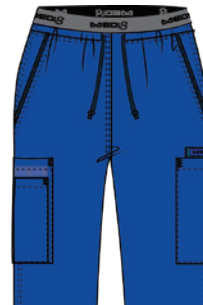
UNISEX SCRUB PANT - STRETCHABLE



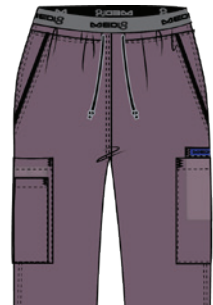
Black/ Steel



Black/ Plum



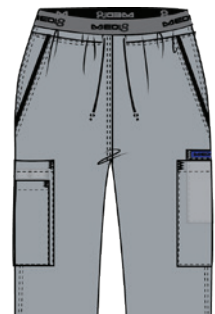
Blue/ Navy



Plum/ Black



Navy/ Blue



Steel/ Black

Features

- MEDI8 brand jacquard elastic waistband
- Contrast drawstring cord under elastic waistband
- Side slant pockets with contrast trim edge
- RHS side pocket with internal herringbone tape divider and external patch pocket with tape tool loop secured with plastic stud
- LHS side pocket with contrast fabric internal patch pocket
- RHS hip pocket
- Articulated knee darts
- Herringbone tape at hem side split
- Herringbone tape is colour co-ordinated with different size label

Fabric 63% Polyester
34% Cotton
3% Spandex,
155gsm

Size XS - 5XL



PATIENT GOWNS

M81700

SEERSUCKER GOWN WITH SHOULDER STUDS



Blue

Features

- Self fabric neck binding and ties
- Herringbone tape ties at back
- Heat resistant studs
- Modesty back panel

Fabric	65% Polyester 35% Cotton 100 gsm
Size	One Size Fits Most



Self fabric neck binding and ties



M81807

PATIENT GOWN WITH FRONT OPENING



Light Blue

Features

- Self fabric internal and external ties
- Front side opening

Fabric	50% Polyester 50% Cotton 155 gsm
Size	One Size Fits Most



PATIENT GOWNS



PATIENT GOWNS

M81808

PATIENT GOWN - SHORT SLEEVE



White

Features

- Self fabric ties
- Safety stitched side seams

Fabric	50% Polyester 50% Cotton 155 gsm
--------	--

Size	One Size Fits Most
------	--------------------



M81809

PATIENT GOWN - LONG SLEEVE



White

Features

- Self fabric ties
- Safety stitched side seams
- Long Knit cuffs

Fabric	50% Polyester 50% Cotton 155 gsm
--------	--

Size	One Size Fits Most
------	--------------------



BARIATRIC GOWNS



PATIENT GOWNS

M811255

BARIATRIC GOWN WITH NECK AND SHOULDER STUDS



Dark Blue

Features

- Herringbone tape ties at back
- Heat resistant studs

Fabric 65% Polyester
 35% Cotton
 155 gsm

Size Bariatric



MK888

CHILDREN'S PATIENT GOWN



White

Features

- Self fabric ties

Fabric 50% Polyester
 50% Cotton
 155 gsm

Size S, L, 2XL



SURGICAL GOWNS

AAMI LEVEL 3 TGA APPROVED



SURGICAL BARRIER GOWNS

NEW

M81821 BARRIER 3 SURGICAL GOWN

AAMI LEVEL 3
TGA APPROVED
ARTG 340301



Heavy duty densely knitted long cuffs



Herringbone tape side seam ties

Surgical Blue

Features

- Reusable Poly carbon surgical gown
- Herringbone tape neck band and neck ties
- Neck darts
- Herringbone tape internal back ties
- Herringbone tape side seam ties
- Felled upper arm seam - no underarm seams
- Heavy duty densely knitted long cuffs
- Safety stitched seams
- Modesty back panel
- 5mm spaced carbon fiber for anti-static

Fabric	99% Polyester 1% carbon 110gsm PU coating
--------	--

Size	One Size Fits Most
------	--------------------

AAMI LEVEL 3 TGA APPROVED ARTG 340301

- AAMI - Association for the Advancement of Medical Instrumentation
- TGA - Therapeutic Goods Administration
- ARTG - Australian Register of Therapeutic Goods
- +/- 5% Weight variance

SURGICAL BARRIER GOWNS

M81823

BARRIER 3 SURGICAL GOWN

NEW

AAMI LEVEL 3
TGA APPROVED
ARTG 340301



Surgical Blue



Heavy duty densely knitted long cuffs



Herringbone tape neck band and neck ties



Neck darts

Features

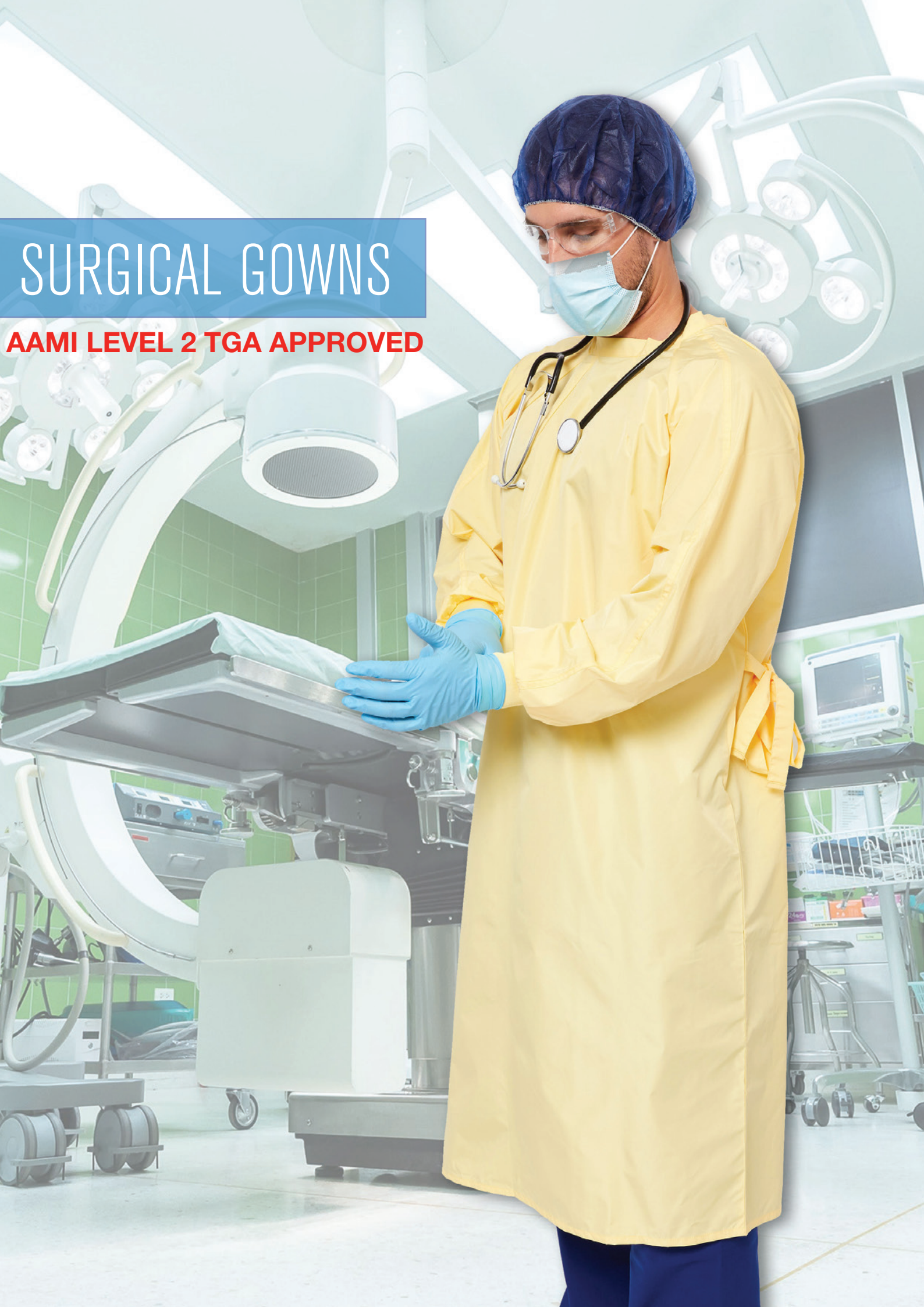
- Reusable Poly carbon surgical gown
- Self fabric neck band and neck ties
- Neck darts
- Herringbone colour coded internal back ties
- Self fabric side seam ties
- Felled upper arm seam - no underarm seams
- Heavy duty densely knitted long cuffs
- Safety stitched seams
- Modesty back panel
- 5mm spaced carbon fiber for anti-static

Fabric 99% Polyester
1% carbon
110gsm
PU coating

Size Small, Medium

AAMI LEVEL 3 TGA APPROVED ARTG 340301

- AAMI - Association for the Advancement of Medical Instrumentation
- TGA - Therapeutic Goods Administration
- ARTG - Australian Register of Therapeutic Goods
- +/- 5% Weight variance



SURGICAL GOWNS

AAMI LEVEL 2 TGA APPROVED

SURGICAL BARRIER GOWNS

NEW

M81824

BARRIER 2 SURGICAL GOWN

AAMI LEVEL 2
TGA APPROVED
ARTG 346647



Surgical Yellow



no underarm seams



Neck darts



Heavy duty densely knitted long cuffs

Features

- Reusable Poly surgical gown
- Self fabric neck band and neck ties
- Neck darts
- Herringbone colour coded internal back ties
- Self fabric side seam ties
- Felled upper arm seam - no underarm seams
- Heavy duty densely knitted long cuffs
- Safety stitched seams
- Modesty back panel

Fabric	100% Polyester 105gsm PU coating
--------	--

Size	Small, Medium
------	---------------

AAMI LEVEL 2 TGA APPROVED ARTG 346647

- AAMI - Association for the Advancement of Medical Instrumentation
- TGA - Therapeutic Goods Administration
- ARTG - Australian Register of Therapeutic Goods
- +/- 5% Weight variance

FLANNELETTE - PYJAMAS



FLANNELETTE - ADULT PYJAMAS

AT480 ELASTIC PANT

PJ PANT/ELASTIC - 20 PCS/CTN



Mint

Features

- Elastic waist
- Reinforced stress points
- Fully breathable

Fabric 100% Cotton
flannelette
Both side brushed
180 gsm

Size One Size Fits Most

Pack Size
20 pieces per carton



AT480 DRAWSTRING PANT

PJ PANT/DRAWSTRING - 20 PCS/CTN



Mint

Features

- Drawstring waist
- Fabric ties
- Reinforced stress points
- Fully breathable

Fabric 100% Cotton
flannelette
Both side brushed
180 gsm

Size One Size Fits Most

Pack Size
20 pieces per carton



FLANNELETTE - ADULT PYJAMAS

AT480 TOP

PJ TOP - 20 PCS/CTN



Mint

Features

- V-necked
- Full front button
- Reinforced stress points
- Fully breathable

Fabric 100% Cotton
flannelette
Both side brushed
180 gsm

Size One Size Fits Most

Pack Size
20 pieces per carton



[illegible]

LINEN - KIDS PYJAMAS

NEW

MK890

KIDS PYJAMA TOP



Large - Yellow



Small - White



Medium - Green

Features

- Heat resistant studs on shoulder
- Self fabric neck binding

Fabric	50% Polyester 50% Cotton 155gsm
--------	---------------------------------------

Size	Small - 1-3 years Medium - 4-6 years Large - 8 - 10 years
------	---

MK891

KIDS PYJAMA BOTTOMS

NEW



Large - Yellow



Small - White



Medium - Green

Features

- Elastic waist
- Reinforced stress points

Fabric	50% Polyester 50% Cotton 155gsm
--------	---------------------------------------

Size	Small - 1-3 years Medium - 4-6 years Large - 8 - 10 years
------	---

SIZE CHART

UNISEX SCRUB TOPS									
STOCK SIZE	XS	S	M	L	XL	2XL	3XL	4XL	5XL
WOMENS EQUIVALENT SIZE	2-4	6-8	10-12	14-16	18-20	22-24	26-28	30-32	34-36
TO FIT CHEST	72-77	82-87	92-97	102-107	112-117	122-127	132-137	142-147	152-162

UNISEX ELASTIC SCRUB PANTS									
STOCK SIZE	XS	S	M	L	XL	2XL	3XL	4XL	5XL
WOMENS EQUIVALENT SIZE	6-8	10-12	14-16	18-20	22-24	26-28	30-32	34-36	38-40
TO FIT WAIST	62-67	72-77	82-87	92-97	102-107	112-117	122-127	132-137	142-147
INLEG	70	73	76	79	80	83	86	88	88

UNISEX MEDICAL WARM-UP JACKET						
SIZE	S	M	L	XL	2XL	3XL
TO FIT CHEST	82-87	92-97	102-107	112-117	122-127	132-137

UNISEX STRETCH SCRUB TOPS									SCRUB TEX
STOCK SIZE	XS	S	M	L	XL	2XL	3XL	4XL	5XL
WOMENS EQUIVALENT SIZE	10-12	14-16	18	20	22	24	26-28	30-32	34-36
TO FIT CHEST	72-77	82-87	92	97	102	107	112-117	122-127	132-137

WOMENS STRETCH SCRUB TOPS									SCRUB TEX
STOCK SIZE	XS	S	M	L	XL	2XL	3XL	4XL	5XL
WOMENS NUMERIC SIZES	6-8	10	12	14	16	18	20	22-24	26-28
TO FIT BUST	82-87	92	97	102	107	112	117	122-127	132-137

UNISEX STRETCH SCRUB PANTS									SCRUB TEX
STOCK SIZE	XS	S	M	L	XL	2XL	3XL	4XL	5XL
WOMENS EQUIVALENT SIZE	6	8	10-12	14-16	18-20	22-24	26-28	30-32	34-36
TO FIT WAIST	62	67	72-77	82-87	92-97	102-107	112-117	122-127	132-137

BARRIER SURGICAL GOWN		
STOCK SIZE	S	M
TO FIT WAIST	87-107	112-152

KID'S GOWN			
SIZE	S	L	2XL
AGE GROUP	0-4	5-12	13+
TO FIT CHEST	48-60	61-80	81+

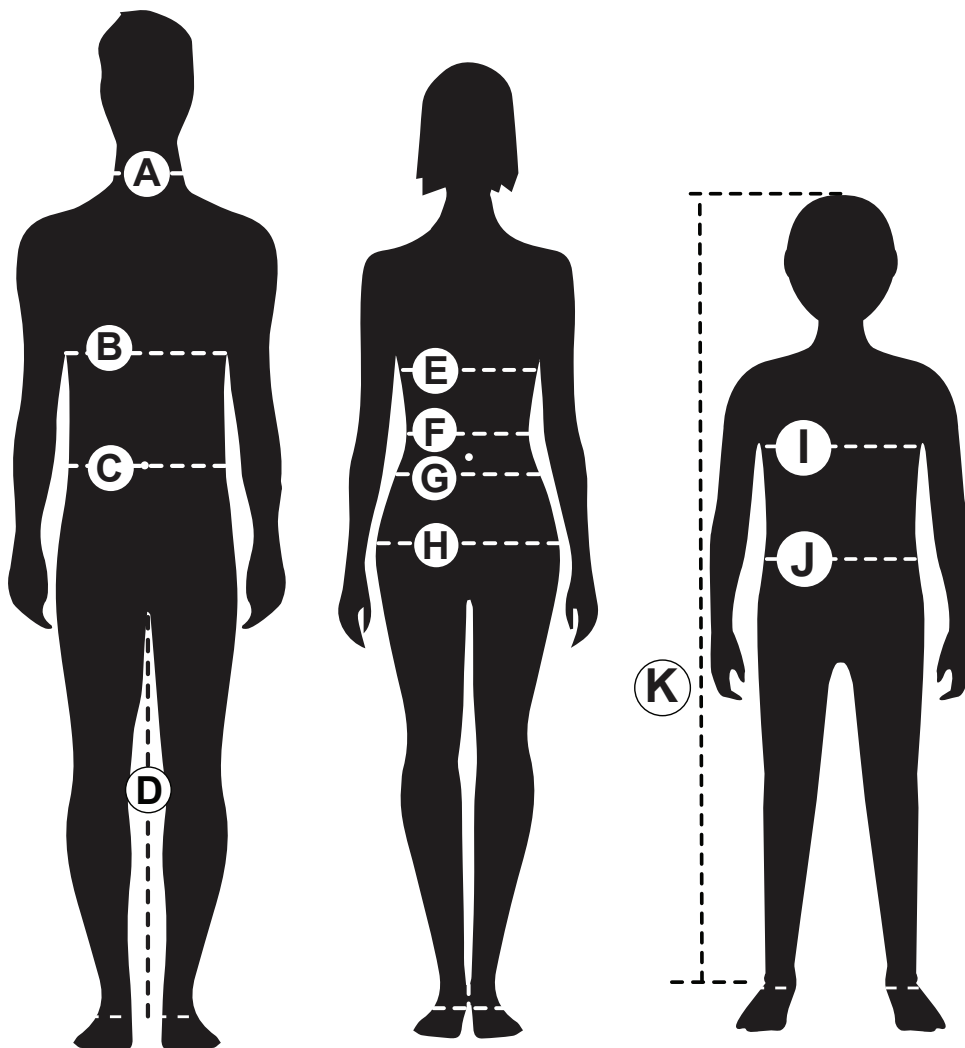
KID'S PAJAMAS			
SIZE	S	M	L
AGE GROUP	1-3	4-6	8-10
TO FIT CHEST	52-56	58-68	72-82

* ALL MEASUREMENTS ARE BODY MEASUREMENTS IN CM AND PROVIDED AS A GUIDE ONLY.

* CHECK CATALOGUE STYLES FOR AVAILABLE SIZES

All information in this catalogue is intended to be true and correct at time of print. However, in the course of time, unforeseen changes may occur which may result in information being out of date. For up to date information, Please contact your sales representative for more information.

HOW TO MEASURE YOURSELF



MALE

A) NECK

Measure around your neck at collar level. Keep one finger between the measuring tape and neck.

B) CHEST

Standing naturally, measure around the fullest part of the chest, keeping the tape at under arm level. Keep one finger between tape and body

C) WAIST

Measure around waist keeping one finger between tape and body. Measure at the navel.

D) INLEG

Measure the inside leg from the crotch to top of the heel of the shoe.

FEMALE

E) BUST

Standing naturally, measure around the fullest part of the chest / bust, keeping the tape at under arm level.

F) WAIST

Measure around the waist, placing one finger between tape and body Measure above the navel, at the narrowest part of your waist.

G) LOW WAIST

Measure around the waist, placing one finger between tape and body. Measure 4cms below your navel.

H) HIPS

Standing naturally, measure around the fullest part of the hips. Keeping the tape level and straight. Placing one finger between tape and body.

KID

I) CHEST

Standing naturally, measure around the fullest part of the chest, keeping tape under arms and around shoulder blades.

J) WAIST

Measure around the smallest part of the child's waist, keeping one finger between tape and body.

K) HEIGHT

Standing with feet together and back to a wall. Measure from heel to the top of the head.

MEASURING TIPS

The above measurements are relating to body measurements in centimeters. These are not garment measurements.

For best results, ask someone to measure you with a tape measure.

Keep the tape tight but not stretched and follow the above instructions.



MEDICAL AND AGED CARE



08 9336 6944

ADMIN@SWSGROUP.COM.AU



SWS GROUP

WORKWEAR | LINEN | HYGIENE | CLEANING | PEST CONTROL

CLEANPRO

CLEANTEX

PESTPRO