

# OSP INSIGHT<sup>®</sup>

---

An IQGeo business

## Other Fiber Optic Software

- **Not Much of a Track Record**  
New solutions are still adding necessary features and might not be around for the long-haul
- **Overly Complex**  
Software that doesn't understand the day-to-day fiber workflow
- **Closed Platform**  
Data movement is often restricted, making integrations impossible
- **Expensive & Rigid Deployment**  
Many solutions are inflexible in their pricing and deployment

## OSPInsight

- **Most Trusted Fiber Optic Software**  
We have 25+ years building fiber inventory software and are going to be around for the long-haul
- **Ease-of-Use**  
Designed by fiber operators, Learn in minutes what takes weeks with others
- **Open Platform**  
Your data is your data, use our Open API, deep geospatial integrations to integrate all your business processes
- **Flexible Pricing & Deployment Options**  
Pricing that works for you, with on-premise & cloud options

## 1. Documentation

Reliable and secure system of record for all your critical network elements.

## 2. One Truth

Single source of truth to disseminate knowledge across your company.

## 3. Workflow

OSPInsight was designed by field engineers for your end-to-end workflow.

*“Without OSPInsight, there’s no way I could collect all that data. I can’t even look at it. I wouldn’t be able to see a path. I wouldn’t be able to see loss and distance... we’d be guessing.” – OSP Engineer at regional telecom*



- **Plan & Design**  
Design new parts of your fiber network and see those plans next to your network infrastructure.
- **Day-to-day Operational Management**  
Troubleshoot service downtime, manage capacity, update network documentation in real time, and support field technicians.
- **Real-time Monitoring & Alerts**  
Connect to your field and test equipment to see the health of your network in real-time and receive alerts immediately if there is an outage.
- **Sales & Customer Support**  
Estimate construction costs for new builds and explore potential business opportunities.

## Taper Report

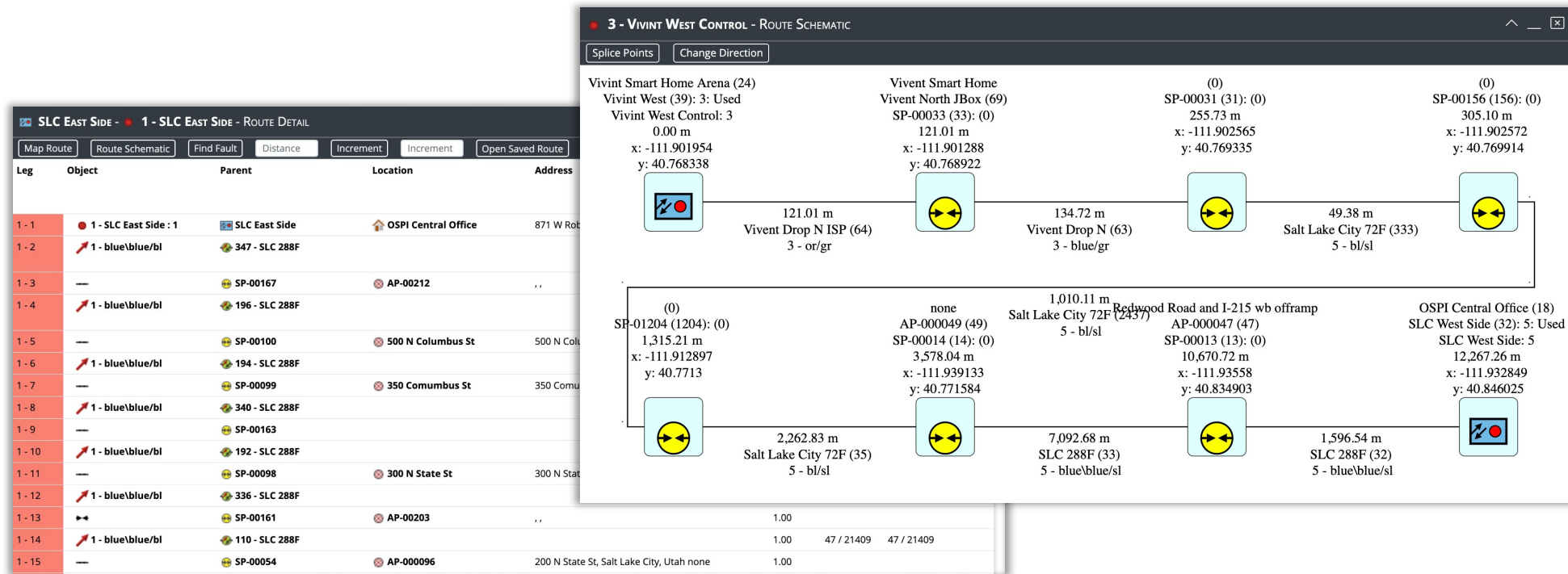
Individual fiber level detail to determine the endpoint of every strand.

#	End Point	Parent	Dir	Status	Priority	Users	Location	Address	Route
1	1 - Eye Center : 1	Eye Center	▶	Used	high	Moran Eye Center	Moran Eye Center	65 Mario Capecchi Drive, Salt Lake City, none none	Eye Center
	1 - TX [Front]	equipment 01	▶				Moran Eye Center	65 Mario Capecchi Drive, Salt Lake City, none none	Eye Center
	2 - RX [Front]	equipment 01	▶				Moran Eye Center	65 Mario Capecchi Drive, Salt Lake City, none none	Eye Center
	7 - Eye Center : 7	Eye Center	▶	Used	high	Moran Eye Center	Moran Eye Center	65 Mario Capecchi Drive, Salt Lake City, none none	Eye Center
	79 - SLC West Side : 79	SLC West Side	▶	Used	high	Moran Eye Center	OSPI Central Office	871 W Robinson Dr, North Salt Lake, Utah none	Eye Center
2	196 : 79	SP-00167	◀				AP-00212	, ,	Eye Center
	2 - Eye Center : 2	Eye Center	▶	Used	high	Moran Eye Center	Moran Eye Center	65 Mario Capecchi Drive, Salt Lake City, none none	Eye Center
	1 - TX [Front]	equipment 02	▶				Moran Eye Center	65 Mario Capecchi Drive, Salt Lake City, none none	Eye Center
	2 - RX [Front]	equipment 02	▶				Moran Eye Center	65 Mario Capecchi Drive, Salt Lake City, none none	Eye Center
	8 - Eye Center : 8	Eye Center	▶	Used	high	Moran Eye Center	Moran Eye Center	65 Mario Capecchi Drive, Salt Lake City, none none	Eye Center
	80 - SLC West Side : 80	SLC West Side	▶	Used	high	Moran Eye Center	OSPI Central Office	871 W Robinson Dr, North Salt Lake, Utah none	Eye Center
	80 - SLC East Side : 80	SLC East Side	▶	Used	high	Moran Eye Center	OSPI Central Office	871 W Robinson Dr, North Salt Lake, Utah none	Eye Center
3	3 - Eye Center : 3	Eye Center	▶	Available	low	none	Moran Eye Center	65 Mario Capecchi Drive, Salt Lake City, none none	
	103 : 3	SP-00051	◀				AP-000093	Medical Dr, Salt Lake City, Utah none	
4	4 - Eye Center : 4	Eye Center	▶	Available	low	none	Moran Eye Center	65 Mario Capecchi Drive, Salt Lake City, none none	
	103 : 4	SP-00051	◀				AP-000093	Medical Dr, Salt Lake City, Utah none	
5	5 - Eye Center : 5	Eye Center	▶	Available	low	none	Moran Eye Center	65 Mario Capecchi Drive, Salt Lake City, none none	
	103 : 5	SP-00051	◀				AP-000093	Medical Dr, Salt Lake City, Utah none	
6	6 - Eye Center : 6	Eye Center	▶	Available	low	none	Moran Eye Center	65 Mario Capecchi Drive, Salt Lake City, none none	
	103 : 6	SP-00051	◀				AP-000093	Medical Dr, Salt Lake City, Utah none	
7	7 - Eye Center : 7	Eye Center	▶	Used	high	Moran Eye Center	Moran Eye Center	65 Mario Capecchi Drive, Salt Lake City, none none	Eye Center

*“The way you can cut a cable and run a Taper Report changed our whole business. We knew what we had. We knew where it was going. We knew what we needed.” – Sr. Manager at large municipality*

## Route Detail & Schematic

Visually trace routes to communicate clearly network connectivity.



*"Without OSPInsight, there's no way I could collect all that data. I can't even look at it. I wouldn't be able to see a path. I wouldn't be able to see loss and distance... we'd be guessing." – OSP Engineer at regional telecom*

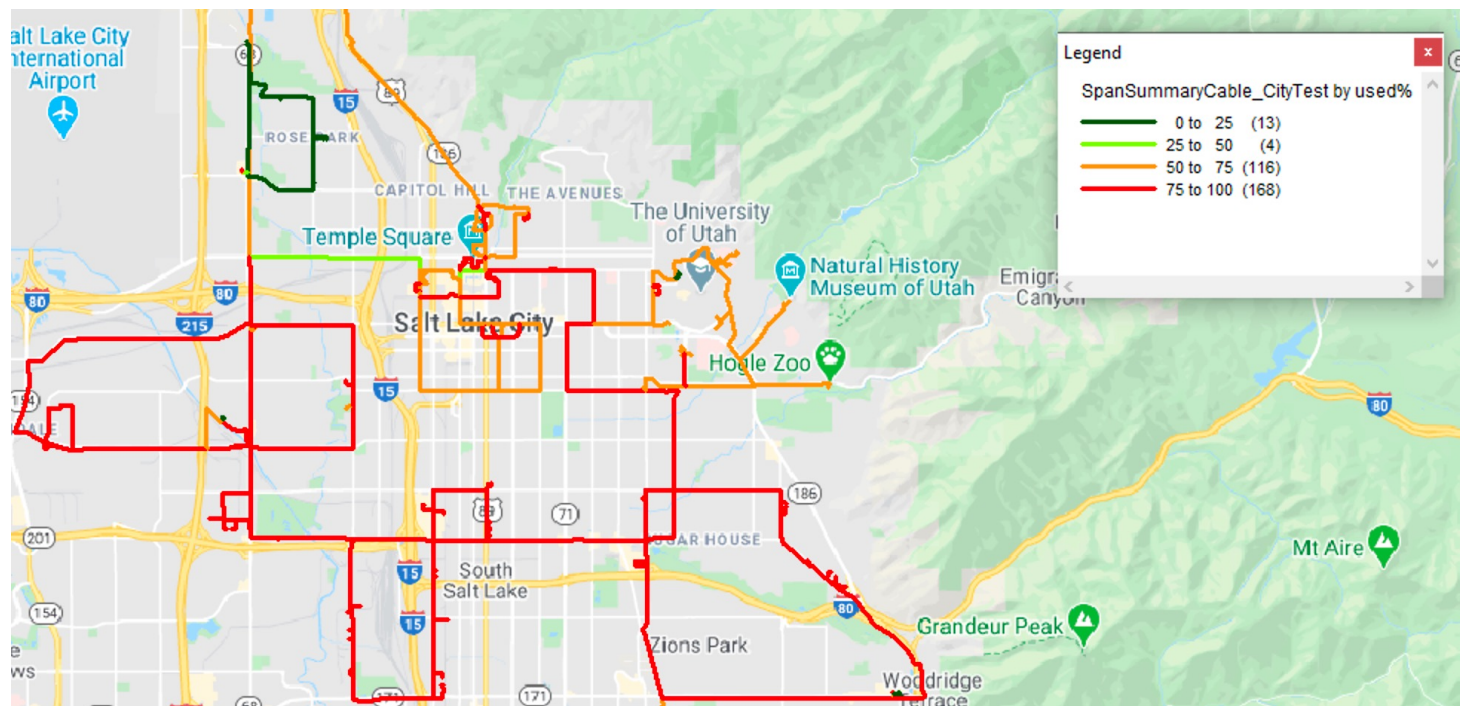
## Interactive Splicing & Patching Records

Proprietary visualization tools for zero confusion on splicing, patching and other connectivity.



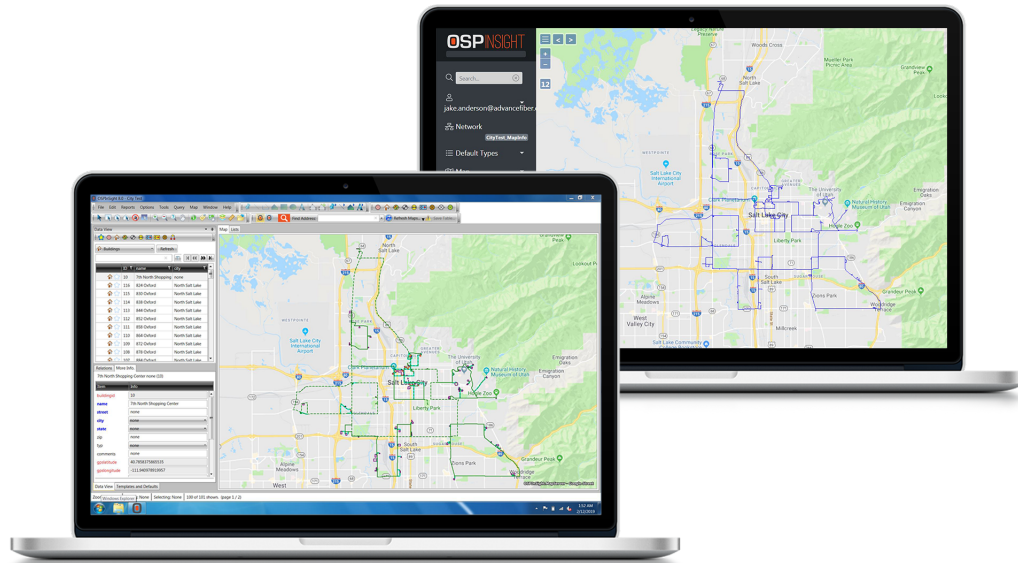
## Capacity Report

Future proof your network by anticipating growth needs through OSPInsight's Fiber Capacity Report.



*"We can tell you everything you wanted to know about that fiber, everything it touched, every pole, every manhole, every splice case..." – VP of Operations at regional telecom*

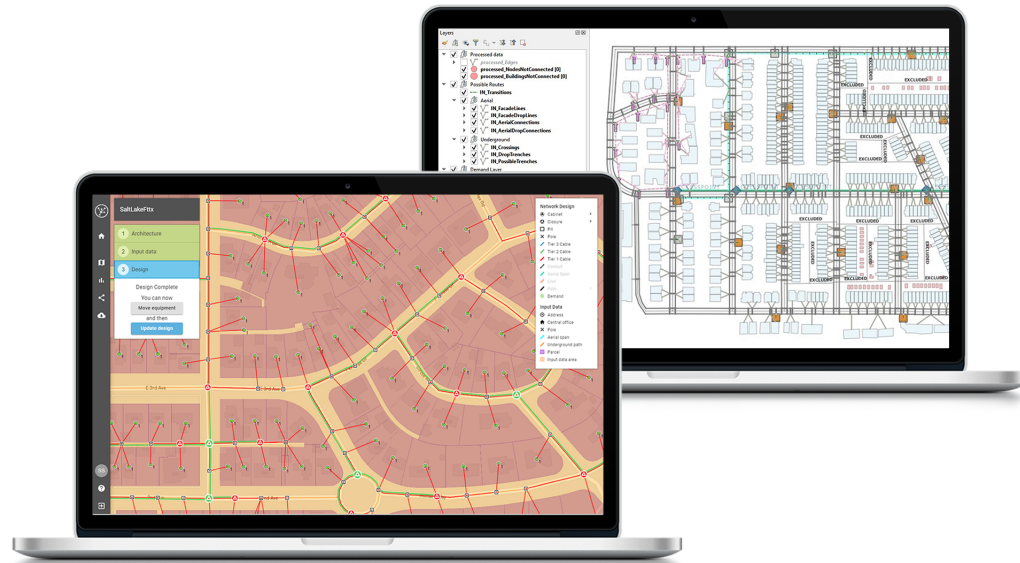




OSP Insight is deeply integrated with the industry's leading GIS providers, allowing you to pull your fiber network data into the rest of your geospatial processes.

## Real-time Integration with Industry Leading GIS

- MapInfo
- Open Source



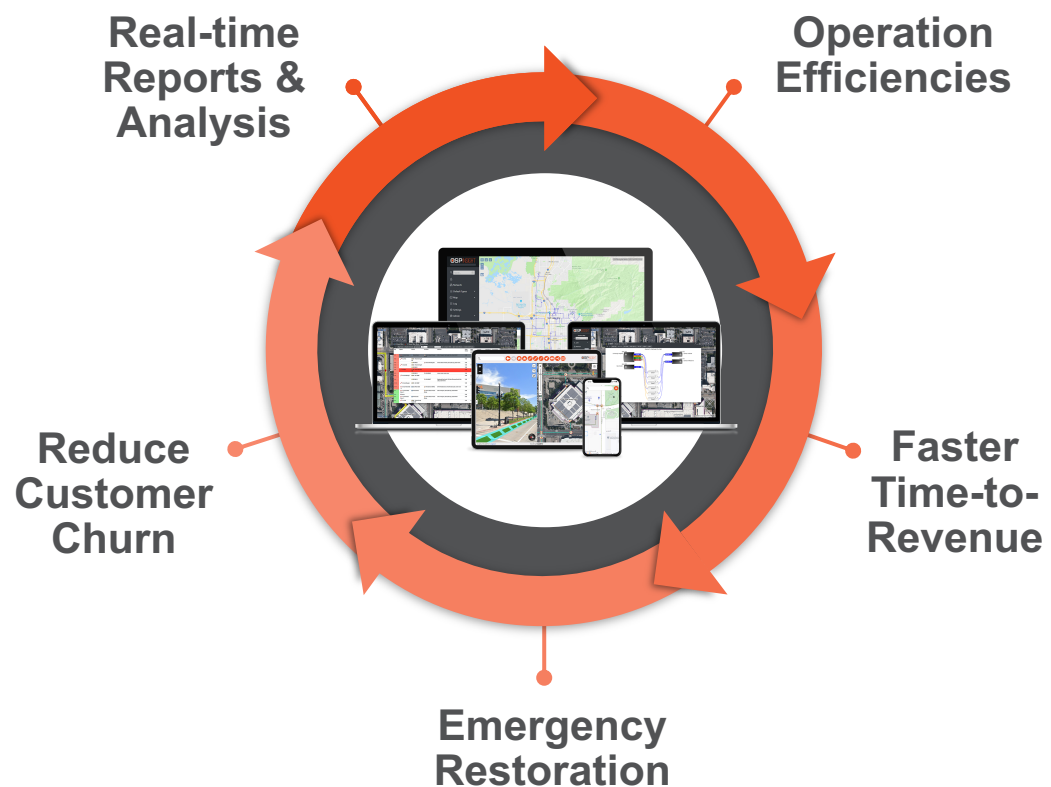
OSPInsight uses the latest web technologies and APIs allowing you to seamlessly sync with the other systems in your business.

**Automated Design – Biarri, Comsof**

**Provisioning – Netcracker**

**Workforce Tracker – Service Now**

**CRM and Sales – Salesforce**



- **Operation Efficiencies**  
Keep accurate records up to date with ease, reducing manual data work.
- **Faster Time-to-Revenue**  
Digitize your workflow from high level design to as-built.
- **Emergency Restoration**  
Find and fix affected fibers faster with proprietary fault-finding capabilities.
- **Reduce Customer Churn**  
Improve service and reduce churn by relating customers to their fiber service.
- **Real-time Reports & Analysis**  
Run tax, accounting, and capacity reports with a few clicks, improving decision making across your business.

## **Connect with us to learn how OSPInsight can transform your Fiber Optic Network Operation**

 [www.ospinsight.com](http://www.ospinsight.com)  +1-385-501-7155