



OSPInsight Web

Product

OSPInsight - An IQGeo business

3672 W South Jordan Pkwy, Suite 102
South Jordan, UT 84009

+1 (385) 501-7155
www.ospinsight.com

OSPINSIGHT[®]

An IQGeo business

01.01

Copyright © IQGeo 2021

Fiber Optic Network Management Software to plan, design, build and operate a better fiber optic network

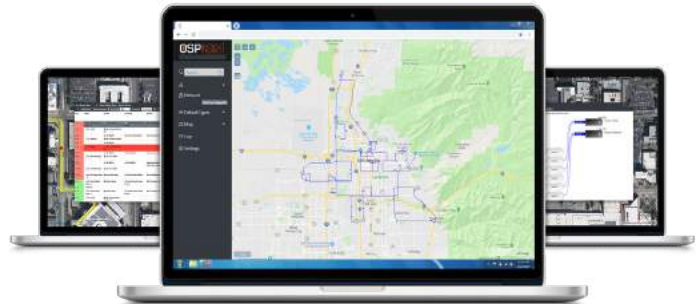


Unparalleled Port-To-Port Level Documentation

With an OSPInsight documented network, you can plan and design new parts of your network, run reports on the relationship between network elements, and explore route details from port-to-port with ease.

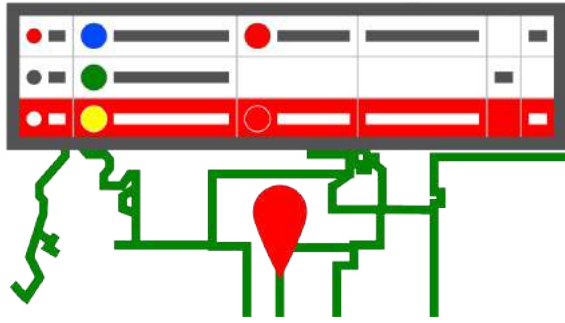
GIS Agnostic

If you already have a current GIS system, OSPInsight Web can seamlessly integrate with it. And if you don't have a current GIS we can leverage open-source tools as a turn-key solution.



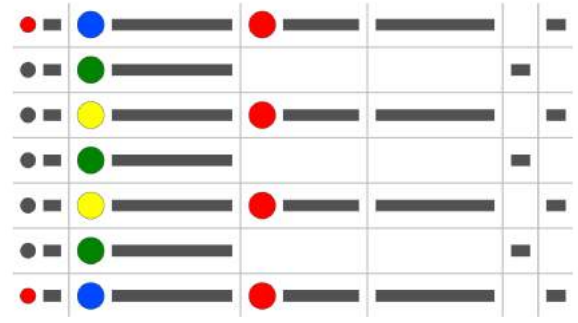
Quickly Locate Faults

Save hours of network downtime, by quickly locating the fault in your network. OSPInsight takes an OTDR trace, runs the route, and pinpoints the precise location of the fault.



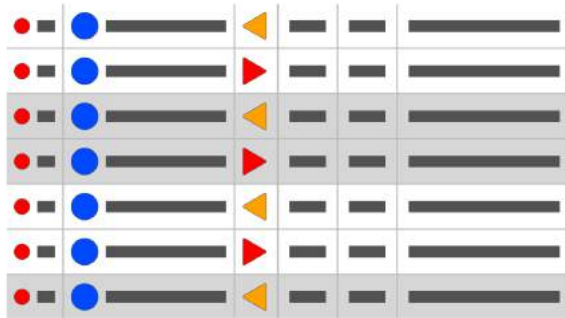
Precise Fault Finder

Troubleshoot the exact location of a fault in a few clicks



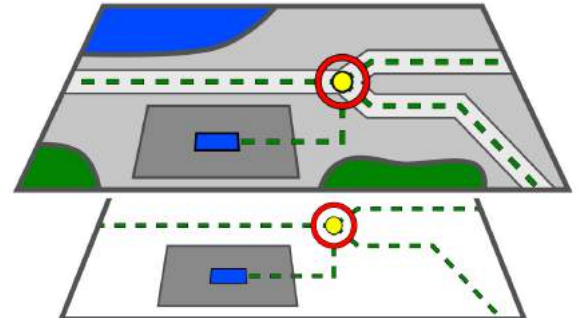
Fiber Route Details

Detailed fiber details from port-to-port.



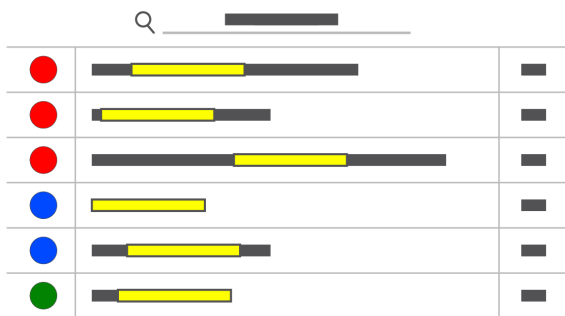
Fiber Assignments

Reports to understand fiber assignments



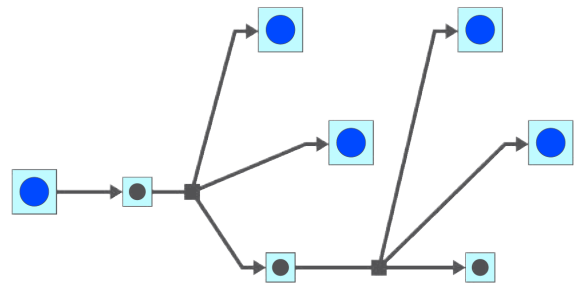
Flexible Layer Control

Find the right details with different layers and maps



Network Wide Search

Search for network and structural elements by keyword






Route Schematic

Detailed view of your fiber routes through each network element



Fiber Management Software, built by OSP Engineers, to plan, build, and operate a better fiber optic network.

Contact Us

-  3672 W South Jordan Pkay, Suite 102
South Jordan, UT 84009
-  +1 (385) 501-7155
-  www.ospinsight.com