



TSURUMI PUMP

LB 1-phase
50Hz

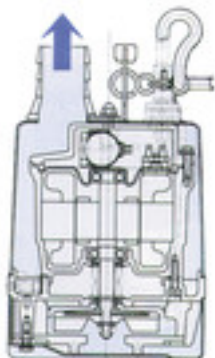
Compact, light and powerful
- for professional use

The TSURUMI LB-pumps are small and robust submersible contractor's pumps with a wide range of applications wherever water has to be moved.



Top Discharge

Pumped water flows between the outer cover and the motor, cooling the motor and discharging as illustrated (forced motor cooling). The pump can be run continuously in air.



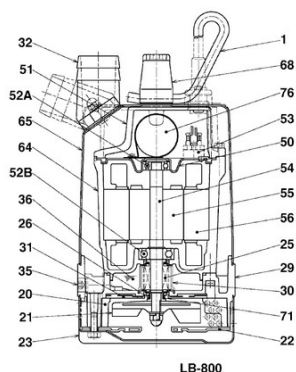
Electrode auto control system available

Handles like a non-automatic pump - no special installation procedures. Sensitive electrodes detect water to start up pump operation even when foreign matters are present. Relay sensor completely molded in resin and covered by rubber case for protection against rough handling.



Components:

| | |
|---------------------|--------------------------|
| 001 Cable | 050 Motor cover |
| 020 Pump casing | 051 Head cover |
| 021 Impeller | 052A Upper bearing |
| 022 Suction plate | 052B Lower bearing |
| 023 Strainer | 053. Miniature protector |
| 025 Mechanical seal | 054 Shaft |
| 026 Oil sealing | 055 Rotor |
| 029 Oil casing | 056 Stator |
| 030 Oil lifter | 064 Motor casing |
| 031 Wear plate | 065 Jacket |
| 032. Outlet | 068 Handle |
| 035 Oil plug | 071 Shaft sleeve |
| 036 Lubricant | 076 Condensor |

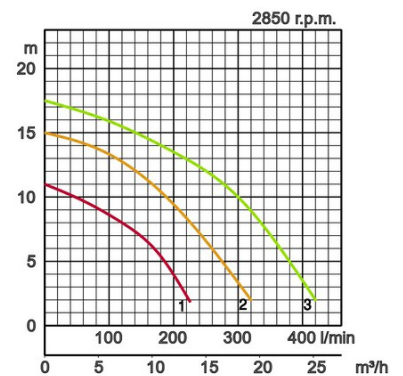


LB-800

Specifications:

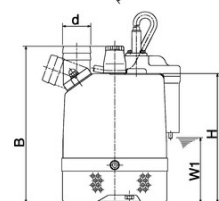
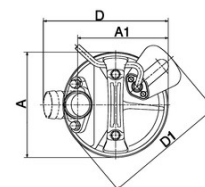
| Model | Colour code curve | Bore mm | Motor output kW | Rated current A | Head max. m | Capacity max. l/min | Dry weight kg w/o cable | Max. solid handling ø mm | Max. water depth m | Cable length m |
|---------|-------------------|---------|-----------------|-----------------|-------------|---------------------|-------------------------|--------------------------|--------------------|----------------|
| LB-480 | 1 | 50 | 0,48 | 2,9 | 11,0 | 225 | 10,4 | 6 | 10 | 10 |
| LB-480A | | 50 | 0,48 | 2,9 | 11,0 | 225 | 11,0 | 6 | 10 | 10 |
| LB-800 | 2 | 50 | 0,75 | 5,0 | 15,0 | 320 | 13,1 | 6 | 10 | 10 |
| LB-800A | | 50 | 0,75 | 5,0 | 15,0 | 320 | 13,7 | 6 | 10 | 10 |
| LB-1500 | 3 | 50 | 1,5 | 15,4 | 17,5 | 440 | 33,0 | 6 | 25 | 10 |

| | | | | |
|----------------------|----------------------------|---|---|--|
| ø Discharge bore mm | | 50 | | |
| Pumping Fluid | Temperature | 0-40°C | | |
| | Type of Fluid | Spring water, Rain water, Ground water, Sand carrying water | | |
| Pump | Components | Impeller | Semi-Vortex impeller | |
| | | Shaft Seal | Double mechanical seal | |
| | | Bearings | Shielded ball bearings | |
| | Material | Impeller | Urethane rubber, Chromium iron casting | |
| | | Casing | Ethylene propylene rubber | |
| | | Suction Plate | Steelplate+Urethane rubber | |
| | Shaft Seal | Silicon carbide in oil bath | | |
| Motor | Type, Poles | | Induction motor, 2 poles, IP68 | |
| | Lubrication | | Turbine oil (ISO VG32) | |
| | Motor Protector (built-in) | | Miniature protector, Circle thermal cut-out | |
| | Insulation | | Insulation class E, Insulation class B | |
| | Phase / Voltage | | Single phase 230V / 110V / 50Hz | |
| | Material | Casing | Aluminium die casting | |
| Shaft | | Stainless steel EN-X6Cr13 | | |
| Cable | | Rubber, H07RN-F | | |
| Discharge Connection | | Threaded flange/Hose coupling | | |



Dimensions in mm:

| Model | d | A | A1 | B | D | D1 | H | W1 |
|---------|----|-----|-----|-----|-----|-----|-----|-----|
| LB-480 | 50 | 187 | 161 | 353 | 231 | - | 228 | 50 |
| LB-480A | 50 | 187 | 161 | 353 | 231 | 223 | 228 | 115 |
| LB-800 | 50 | 187 | 160 | 408 | 230 | - | 283 | 50 |
| LB-800A | 50 | 187 | 160 | 408 | 230 | 223 | 283 | 170 |
| LB-1500 | 50 | 187 | 122 | 600 | - | - | 518 | 80 |



W1: lowest running water level

In the event of abrasive and corrosive utilization, stronger wear and tear will take place naturally in certain components. In this regard, please pay attention to our website www.tsurumi.eu/english/applications.htm.



Contributing to World-wide Prosperity and Understanding through Worker- and Environment-friendly Production.

Designed for increased productivity through fully integrated streamlined production systems, Tsurumi's factory in Kyoto (Japan) features a production capacity of a full 1 million pumps per year. Large-scale modern R&D facilities offer optimum conditions for experimenting and testing of even super-large pumps and for developing new products to expand the possibilities and applications of pumps. To provide optimum conditions for our main asset, our workers, as well as for the environment, special emphasis is placed on optimized working conditions with airconditioning, minimized dust and exhaust gas emission, comprehensive recycling and waste recovery.

Tsurumi (Europe) GmbH

Heltorfer Straße 14
D-40472 Düsseldorf
Tel.: +49 (0)211-4179373
Fax: +49 (0)211-4791429
Email: sales@tsurumi.eu
www.tsurumi.eu

We reserve the right to change specifications and designs herein for improvement without prior notice. Our pumps are for professional use only. In the event that Tsurumi (Europe) GmbH have, in exceptional cases taken over, a manufacturer's warranty, this entitles the enduser to assert remedy free of charge against Tsurumi (Europe) GmbH due to any defect to the product occurring during the guarantee period (see below), also then when the warranty claims against the seller do not or no longer exist. In the event of malfunction, which is attributable to the improper handling by the enduser, no guarantee claim shall arise. Further claims shall not result from the warranty, unless if something to the contrary has explicitly been determined. The decision as to whether remedy is effected by way of replacement or repair shall be at the choice of Tsurumi (Europe) GmbH. The claims shall be time barred after a period of three months after expiry of the guarantee period, however, not before expiry of the warranty period which is valid towards the seller. In the event of doubt, the warranty period shall correspond with the warranty period which is valid between the end-user and his seller.



com-LB-EN

