

# Wound Care Product Guide



## Clinical Education Resources

At Molnlycke Health Care, we are dedicated to supporting clinicians with a portfolio of educational resources. Our relationships with healthcare professionals worldwide are the foundation of multi-faceted programs that support best practice across the continuum of care. Every region across the country has a dedicated, board-certified wound care expert ready to consult, educate and help problem-solve on behalf of your vision for best skin and wound care practice. These experts provide many resources, including live programs on cutting-edge issues in the prevention and treatment of wounds.

### Topics Include:

#### Prevention

- Comprehensive Pressure Injury Prevention Program development
- Pressure injury prevention across environments of care:
  - The Perioperative Suite
  - Critical Care including the Emergency Department
  - The Pediatric and Neonatal continuum
  - Adult medical and surgical populations
- Medical device-related pressure injury
- Patient positioning
- Nurse Technician Empowerment
- Prevention education programming for staff

#### Treatment

- Wound Management
- Evidence Based Practice in Wound Care
- Diabetic Foot Wounds
- Lower Extremity Wounds
- Irradiated Skin
- Skin Tears
- Surgical Site Infection

## Pre-Op, Intra-Operative, and Post-Op Prevention for the Entire Surgical Care Team



### 2.0-CEUs: Under Construction: The Power of Undisturbed Wound Healing

Learn which wounds heal best by maximizing time between dressing changes and which need therapeutic disruption to heal. Appropriate for all health care professionals.



### 2.0-CEUs: Skin Safety: Preventing Perioperative Pressure Injury

The OR is recognized as one of the highest risk environments for the development of pressure injuries due to the prolonged immobility and use of medical devices essential to the surgical procedure. Patient and environmental risks for pressure injury development, advances in prophylactic dressings, positioning technologies and the recommendations from the 2016 AORN Pressure Ulcer Prevention Toolkit are the focus of the course.



### 2.0-CEUs: Surgical Site Infections: Target Zero

An estimated 1 in every 20 OR Patients will be affected by surgical site infections. This course reviews best practice guidelines for the perioperative period as well as emerging evidence on the role of post-operative dressings in supporting the drive-down for SSI incidence.

# Table of Contents

Clinical Education Resources .....	2	Melgisorb® Plus .....	30
Dressing Selection Guide.....	4	Melgisorb® Ag .....	31
Value Added Services .....	5	Normlgel® Ag.....	32
Standardization Results.....	6	Mesalt® .....	33
Mepilex® Border Flex .....	8	Alldress®.....	34
Mepilex® Border.....	10	Mextra® Superabsorbent.....	35
Mepilex® Border Ag / Mepilex® Border Sacrum Ag ...	11	Mepore® Pro.....	36
Mepilex® Border Sacrum .....	12	Mepore® .....	36
Mepilex® Border Heel .....	14	Mepore® Film .....	37
Mepilex® Border Lite .....	15	Mepiform®.....	38
Mepilex® Border Post-Op .....	16	Mepitac® .....	39
Mepilex® Border Post-Op Ag .....	17	Mefix® .....	40
Mepilex® / Mepilex® Heel .....	18	Setopress® .....	41
Mepilex® Ag .....	19	Tubifast® 2-Way Stretch .....	42
Mepilex® XT.....	20	Tubifast® Garments.....	43
Mepilex® Lite .....	21	Tubigrip®.....	44
Mepilex® Transfer .....	22	Dermafit .....	45
Mepilex® Transfer Ag .....	23	Mölnlycke® Z-Flo™ Fluidized Positioner .....	46
Lyof foam® Max / Lyof foam® Max T .....	24	Mölnlycke® Z-Flo™ Fluidized Positioner Neonatal.....	48
Mepitel® One.....	25	Mölnlycke® Tortoise® Turning & Positioning System...	50
Mepitel®.....	26	Mölnlycke® Z-Flex™ Fluidized Heel Boot .....	52
Mepitel® Ag.....	27	Mölnlycke® Static Air Boot .....	53
Exufiber® .....	28	Mölnlycke® Static Air Seat Cushion .....	53
Exufiber® Ag + .....	29	Ordering Information .....	54

The information provided herein is not to be construed as the practice of medicine or substituted for the independent medical judgment of a patient's treating clinician. This information, including but not limited to suggestions for product selection and suggested use is based on generalizations and does not consider the unique characteristics of an individual patient. Each patient's clinician shall remain solely responsible for assessing patient, determining the appropriate treatment and managing treatment. For additional information, please refer to the applicable product insert or contact Mölnlycke Health Care at 1-800-843-8497.



# Mölnlycke® Wound Dressing Selection Guide<sup>1</sup>

Description	Eschar (Colors may vary)	Predominantly Slough (Infection may be present)	Granulating/ Mixed Wound Tissue	Granulating and/or Epithelializing	Skin Tear	Epithelializing	Surgical Incisions	Skin at Risk (No injury)			
Wound Appearance											
Depth	Unknown	Deep			Shallow		Sutured				
Exudate Level	Moderate to None Fill	High Fill	Moderate to Moderate Fill	Moderate Fill	Cover	Moderate to None Cover		When used as part of an individualized, comprehensive pressure injury prevention protocol <sup>2</sup> cover with:			
<p><b>Suggested Products</b></p> <p>Normlgel® Ag OR Mesalt®</p> <p><b>Cover*</b></p> <p>Mepilex® Border Flex Mepilex® Border Lite</p>		<p>Exufiber®</p> <p><b>Cover</b></p> <p>Mepilex® Border Flex OR Mextra® Superabsorbent</p>		<p>Exufiber®</p> <p><b>Cover</b></p> <p>Mepilex® Border Flex</p>		<p>Mepitel® / Mepitel® One</p> <p>Secure with secondary absorptive/cover dressing and change PRN.</p> <p>OR</p> <p>Mepilex® Border Flex Mepilex® Border Lite</p>		<p>Mepilex® Border Post-Op</p> <p><b>High Risk Incisions Use:</b></p> <p>Mepilex® Border Post-Op Ag</p>		<p>Mepilex® Border Flex</p> <p>For anatomic sites other than sacrum or heel.</p> <p>OR</p> <p>Mepilex® Border Sacrum OR Mepilex® Border Heel</p> <p><b>Fixed Devices Use:</b></p> <p>Mepilex® or Mepilex® XT or Mepilex® Lite or Mepilex® Transfer (PRN)</p>	
Important!	<p>Offload by repositioning at intervals appropriate for the patient using Z-Flit<sup>™</sup> Fluidized Positioners, Tortoise<sup>™</sup> Turning &amp; Positioning and/or Z-Flex<sup>™</sup> Fluidized Boot<sup>2</sup></p> <p>Consider using Mepilex® Ag, Mepilex® Border Ag, Exufiber Ag+ or Mepitel® Ag for antimicrobial effect</p> <p>Ensure that all anatomic sites at risk are free from pressure</p>										
Notations:	<p><b>*Consult MD/WOC Nurse/ Wound Care Team for ALL eschar wounds</b></p> <p>⊕ Fixation: Mepitac®, Mefix®, Tubifast®                  ⊕ Compression - Setopress®                  ⊕ Firm support for sprain, strain and swelling - Tubigrip® or Dermafi<sup>™</sup></p> <p>⊕ Safetac® dressings <b>DO NOT</b> require use of skin barrier products.                  ⊕ Mepitel® may be used as a contact layer with NPWT                  ⊕ Contact layers must be secured with an appropriate secondary dressing</p>										

Mepilex®/Mepitel® One may be left in place during wound cleansing and irrigation. Change secondary dressings as needed. | <sup>1</sup> Image courtesy of NPJAP.org | Copyright © 2011 Gordian Medical, Inc. dba American Medical Technologies | All other images: consent on file.

Reference: 1. Doughty, D and McKittrick, L., Eds. Core Curriculum: Wound Management. Wound, Ostomy and Continence Nurses Society. Philadelphia - Wolters Kluwer, 2016. 2. 1. European Pressure Ulcer Advisory Panel, National Pressure Injury Advisory Panel and Pan Pacific Pressure Injury Alliance. Prevention and Treatment of Pressure Ulcers/Injuries: Clinical Practice Guideline. The International Guideline. Emily Haesler (Ed). EPUAP/NPIAP/PPPIA, 2019.

The suggested topical management options and change rates are the treatment choice of your facility and may not reflect the opinions of Mölnlycke Health Care or in the case of products manufactured by a company other than Mölnlycke Health Care, the manufacturer's recommended usage guidelines.

Go to [www.connect2know.com](http://www.connect2know.com) for professional education including FREE CE Courses to support best practice across your organization.



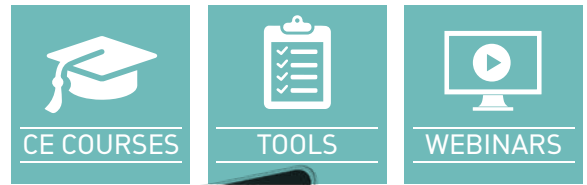


Powered by Mölnlycke

Online Healthcare Professional Education

Connect2Know® advances the performance in healthcare by equipping professionals with continuing education through:

- FREE Accredited CE courses
- Evidence-based resources
- Expert webinars
- Research briefs on hot topics
- Link to patient wound education website
- Product training and compliance



### Connect2Know™ FREE CE Courses:

#### 9 Course Series Promotes Prevention Throughout Environments of Care (State Board-Accredited):

**An excellent foundation for all caregivers:**

- » Perspectives on Prevention™: Overview
- » Perspectives on Prevention: Skin - Our Ultimate Defense
- » Perspectives on Prevention: The Legal Impact

**Assign per clinical area:**

- » Perspectives on Prevention: The Perioperative Environment
- » Perspectives on Prevention: The Critical Care Environments
- » Perspectives on Prevention: The Pediatric and Neonatal Environments
- » Perspectives on Prevention: The Medical-Surgical Environment
- » Perspectives on Prevention: Surgical Site Infections - Target Zero!
- » Positioning to Prevent Pressure Injury

\* **Consider:** Adding starred courses below

#### 4 Courses Drive Prevention Program Development to Increase Awareness and Change Hospital Culture (ANCC Accredited):

- » Pressure Ulcer Prevention Programs: Planning and Considerations
- » Pressure Ulcer Prevention Programs: Best Practices to Implement
- » Skin and Wound Teams
- » Creating Effective Change: Building a Successful Quality Improvement Project

#### 10 Wound Care and Management Courses (ANCC Accredited):

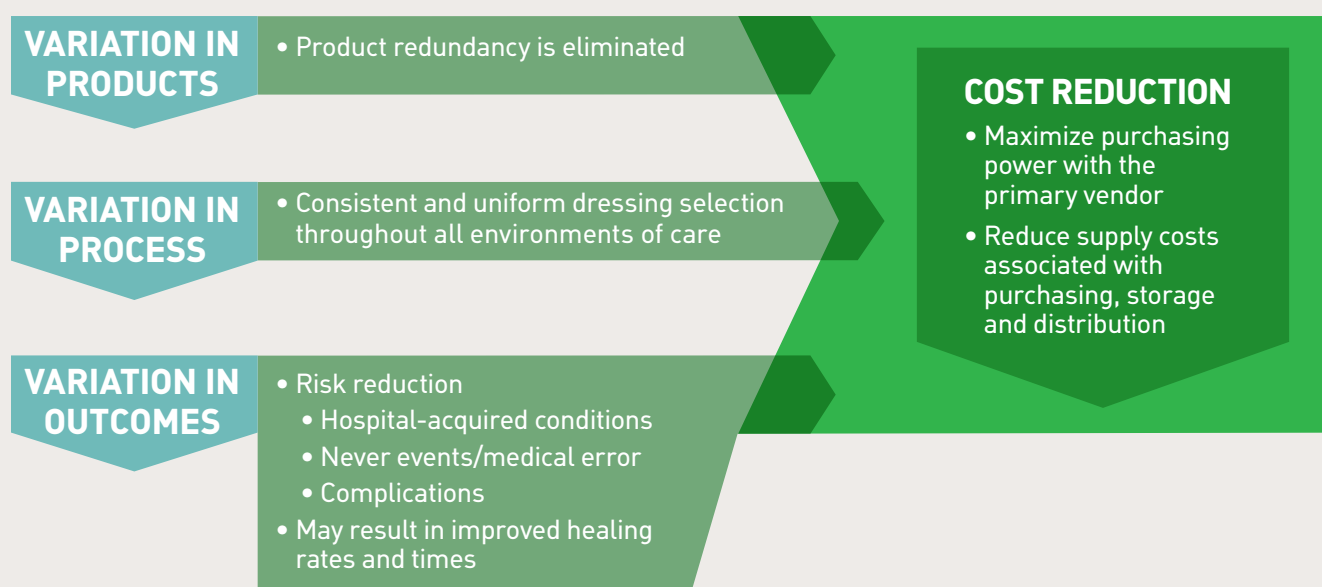
- » Basic Management of Wounds
- » Advanced Physiology of Wound Healing
- » Infection and Bioburden in the Chronic Wound
- » Under Construction: The Importance of Undisturbed Wound Healing
- » Physiology of Delayed Healing in Diabetic Patients
- » Pressure Ulcer Classification and Management
- » Skin Tear Management and Prevention
- » Differentiating Moisture-Associated Skin Damage and Pressure Injury
- » Venous, Lymphedema and Arterial Injury
- » Right dressing / Right Wound
- » Diabetic Foot Injury: The Struggle to Heal



# How can standardization help my organization?

Standardization creates value by integrating best-practice processes with appropriate dressings. Standardization can favorably impact Supply Chain by reducing the number of SKUs to only those materials that are known to be both cost and clinically effective.

Standardization reduces variation for optimized results:



## Standardization gives your stakeholders an opportunity for a “WIN-WIN:”

Clinicians can use products chosen for clinical efficacy, not price per dressing. The entire organization can realize significant savings and can benefit from greater risk reduction, improved outcomes and patient experience of care.



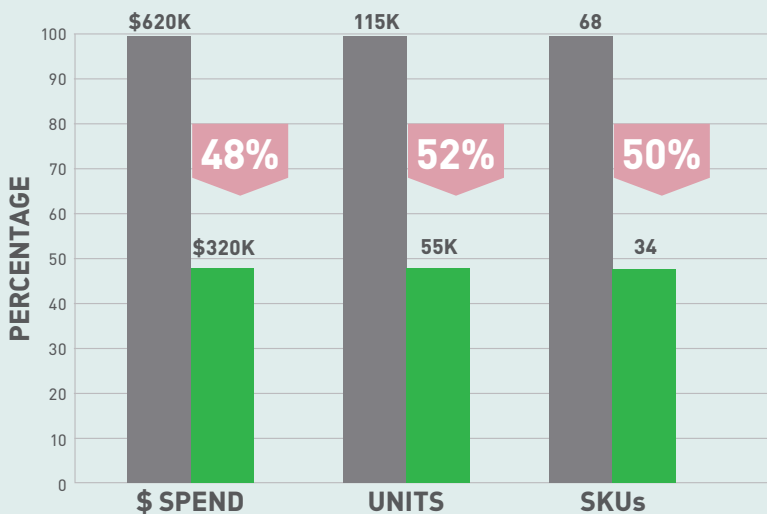


# Case Study: One IDN's Experience<sup>1</sup>

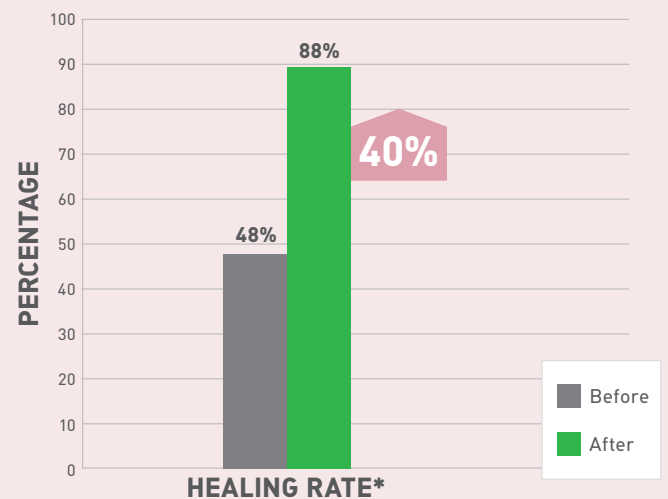
An 857-bed Integrated Health Delivery Network (IDN) in the Southeast identified a high annual advanced wound care dressing spend of \$620,000 as a prime opportunity for standardization. Upon inventory analysis, it was found that the institution had 68 separate SKUs, with 3 competitive foam products in 11 different sizes comprising 70% of the total wound care volume and 58% of the total spend. After participating in an evaluation period, Mölnlycke Health Care was selected as the IDN's primary vendor.

Following standardization to Mölnlycke, it reported increased healing rates, significant savings and higher patient satisfaction.

## Financial Benefits of WC Standardization<sup>1</sup>



## Clinical Benefits of WC Standardization<sup>1</sup>



### COST:

- Reduced its annual spend by \$300,000
- Reduced the number of SKUs from 68 to 34
- Reduced inventory on hand by an estimated \$25,000 per month

### QUALITY:

Healing rates were measured before and after standardizing protocols and products in the Wound Care Center

- 16-week healing rate improved from 48% to 88%

### OUTCOMES:

- Wound care patient satisfaction scores rose by 13%.

# Mepilex® Border Flex

Stays on, uniquely conforms



Track the spread of exudate without lifting dressing<sup>1</sup>



Trap exudate containing bacteria away from wound<sup>2</sup>



Flex Technology to conform



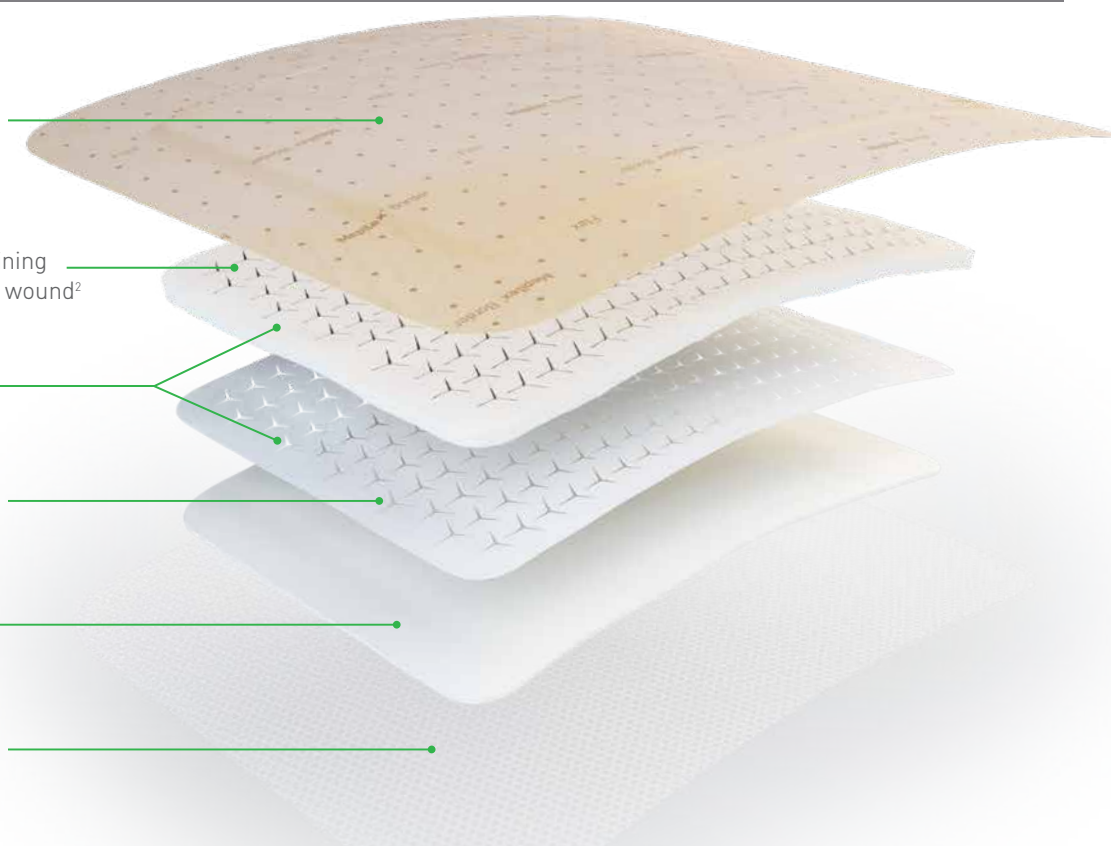
Channel exudate to maximize capacity<sup>3</sup>



Absorb exudate without swelling<sup>4</sup>



Safetac® for gentle dressing changes<sup>5</sup>



## How Mepilex Border Flex works

Mepilex Border Flex is a five-layer, bordered foam dressing that is highly conformable due to Flex Technology. It absorbs, channels and traps exudate and allows you to track progress.

## Benefits of Mepilex Border Flex

- Flex Technology provides excellent flexibility<sup>6</sup> and conformability to avoid early detachment<sup>7</sup>
- Proven to handle more exudate\* than other all-in-one foam dressings<sup>8</sup>
- Up to 7-day wear time<sup>9</sup> with shower-proof dressing<sup>10</sup>
- For use on a wide range of chronic and exuding wounds, as well as for pressure injury prevention<sup>9,11</sup>

**Wear time:** Mepilex Border Flex may be left in place for up to 7 days depending on the condition of the wound and surrounding skin.

\*in vitro studies

\*\*When used as part of an individualized, comprehensive pressure injury prevention protocol.

## Areas of use

- Management of wounds with moderate to heavy exudate
- Leg and foot ulcers
- Pressure injuries
- Skin tears and other traumatic wounds
- Aid in prevention of non-sacrum and heel area pressure injuries\*\*

## Mepilex Border Flex ordering information

Product Code	Size	Pcs/box	Pcs/case	HCPCS
595200	3" x 3" (7.5 x 7.5 cm)	5	50	A6212
595300	4" x 4" (10 x 10 cm)	5	50	A6212
595400	6" x 6" (15 x 15 cm)	5	50	A6213
595600	6" x 8" (15 x 20 cm)	5	50	A6213

For Mepilex Border Flex Oval product codes and information, please see page 54 in the Ordering Information section.

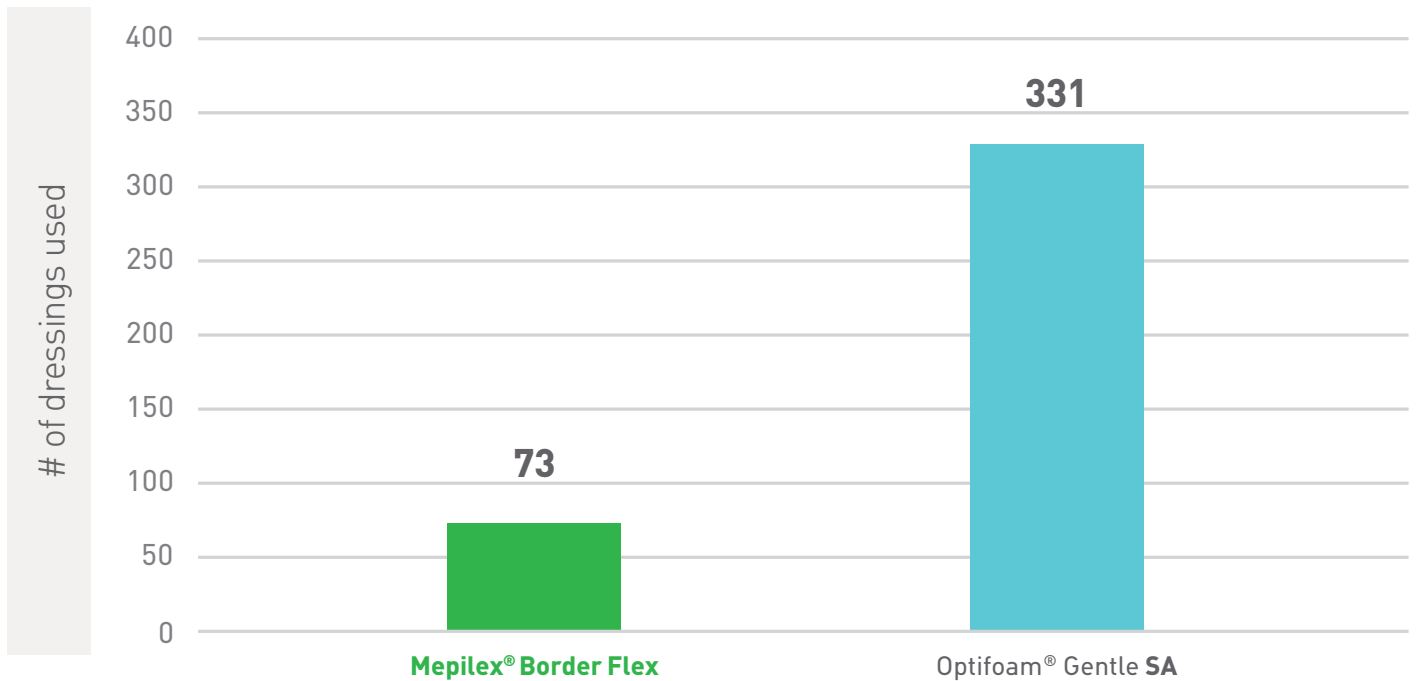
**References:** 1. Report PD-528872. 2. PD-537072-04 3. Report PD-52887 4. Report PD-525458. 5. White R et al. Evidence for atraumatic soft silicone wound dressing use. Wounds UK, 2005. 6. Report PD-528870-01. 7. PD-529747. 8. Report PD-527642-01. 9. Mepilex Border Flex Instructions for Use. 10. Report PD-532095. 11. Tyson, Leigh. Poster Presentation, SAWC, San Antonio, TX.



# Cost per dressing ≠ cost per use

In a recent Quality Improvement Project (QIP), use of Mepilex® Border Flex resulted in lower cost and increased efficiency over Optifoam® Gentle SA<sup>11</sup>

## Mepilex Border Flex Group Utilized 258 Fewer Dressings<sup>11</sup>



## In this QIP:

**78%**

**Fewer Dressing Changes** than Optifoam Gentle SA<sup>11</sup>

**74%**

**Lower Cost** than Optifoam Gentle SA<sup>11</sup>

**21 HOURS**

**Less Nursing Time** than Optifoam Gentle SA<sup>11</sup>

Longer wear time and fewer dressing changes minimize wound disturbance, reducing dressing costs and waste



# Mepilex® Border

The self-adherent all-in-one bordered foam dressing

## 5th layer:

Backing film provides moisture, viral and bacteria barrier,<sup>†</sup> and it has high permeability to allow effective moisture vapor transfer.

## 4th layer:

The highly absorbent retention layer retains exudate.

## 3rd layer:

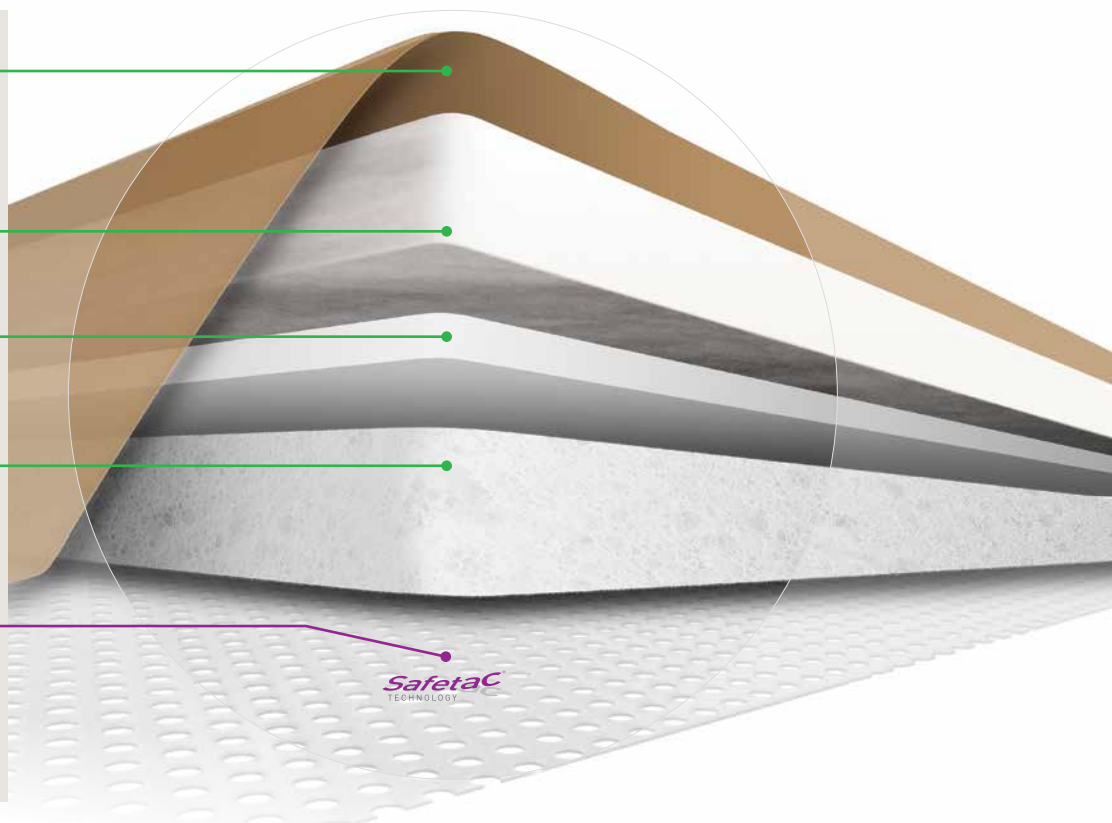
The spreading layer distributes exudate evenly to maximize the full surface area of the retention layer above it.

## 2nd layer:

Absorption layer attracts moisture/exudate rapidly and prevents it from returning to the wound while protecting the periwound skin.

## 1st layer:

Safetac technology wound contact layer minimizes patient pain and trauma to the wound and surrounding skin at removal while reducing the risk of maceration.<sup>1,2,3</sup>



## How Mepilex Border works

Mepilex Border has excellent fluid handling properties because of the following:

- Safetac technology layer – seals around wound/incision margins
- Absorption layer – ensures quick and effective absorption
- Spreading layer – spreads the exudate into the retention layer
- Retention layer – impedes exudate from being pushed back into the skin; reducing the risk of maceration<sup>2</sup>
- Backing film – highly breathable; moisture and bacteria proof to protect the wound from outer contamination

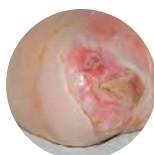
## Benefits of Mepilex Border

- Atraumatic to the wound and surrounding skin on removal<sup>2</sup>
- Does not adhere to a moist wound
- Adheres gently and securely to dry, intact skin
- Maintains a moist wound environment
- Minimizes the risk of maceration<sup>2</sup>
- Designed for ease of use and patient comfort
- Barrier to outside moisture, viruses and bacteria

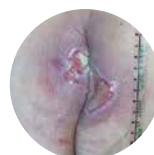
## Areas of use

- Management of moderate to highly exuding wounds such as:
  - Pressure injury
  - Leg and foot injury
  - Traumatic wounds (e.g., skin tears and secondary healing wounds)
- Aid in the prevention of skin damage
- Incision Care

**Wear time:** Mepilex Border may be left in place for several days depending on the condition of the wound and surrounding skin, or as indicated by accepted clinical practice.



Foot ulcer



Pressure ulcer



Sacral pressure ulcer

## Mepilex Border ordering information

Product Code	Size	Pcs/box	Pcs/case	HCPCS
295200	3" x 3" (7.5 x 7.5 cm)	5	70	A6212
295300	4" x 4" (10 x 10 cm)	5	50	A6212
295400	6" x 6" (15 x 15 cm)	5	50	A6213
295600	6" x 8" (15 x 20 cm)	5	50	A6213

**References:** 1. White R. A multinational survey of the assessment of paWhite R. A multinational survey of the assessment of pain when removing dressings. Wounds UK 2008; Vol 4, No 1. 2. Wiberg A.B. et al. Preventing maceration with a soft silicone dressing: in-vitro evaluations. Poster presented at the 3rd Congress of the WUWHs, Toronto, Canada, 2008. 3. Upton D., Solowiej K. The impact of atraumatic vs conventional dressings on pain and stress. Journal of Wound Care. Vol 21, No 5, May 2012.

The self-adherent all-in-one antimicrobial bordered foam dressing

#### 5th layer:

Backing film provides moisture, viral and bacteria barrier,<sup>†</sup> and it has high permeability to allow effective moisture vapor transfer.

#### 4th layer:

The non-woven layer helps spread fluid for better vapor transmission. It is colored grey to distinguish the Ag version from Mepilex® Border.

#### 3rd layer:

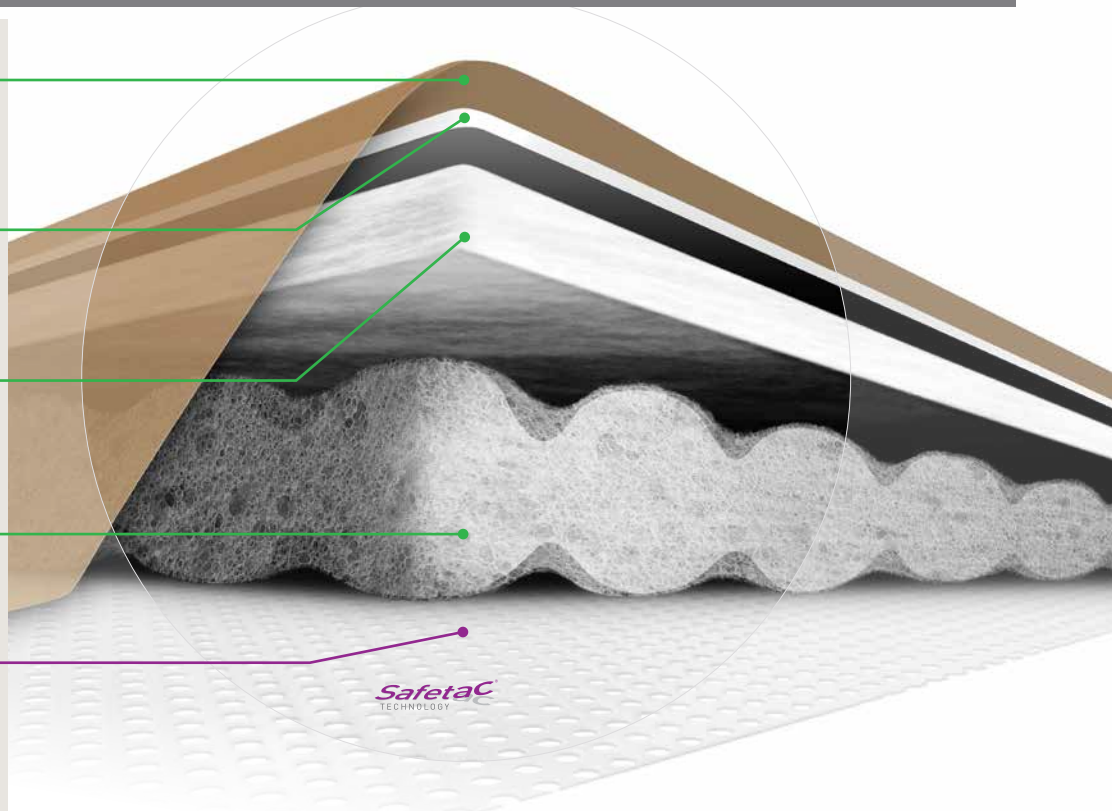
The super absorbent layer absorbs and stores exudate from the pad below it, keeping it safely away from the wound and surrounding skin.

#### 2nd layer:

The unique, compressed foam with silver absorbs and spreads exudate while allowing silver to be released.

#### 1st layer:

Safetac technology wound contact layer minimizes patient pain and trauma to the wound and surrounding skin at removal while reducing the risk of maceration.<sup>1-3</sup>



## How Mepilex Border Ag works

Mepilex Border Ag is an antimicrobial all-in-one foam dressing that effectively absorbs and retains exudate and maintains a moist wound environment. The Safetac technology layer seals the wound edges, which prevents the exudate from leaking onto the surrounding skin and minimizes the risk of maceration.<sup>3</sup> The Safetac technology layer allows that the dressing can be changed without damaging the wound or surrounding skin or exposing the patient to additional pain.<sup>1</sup>

Mepilex Border Ag starts to inactivate wound related pathogens within 30 minutes with sustained effect up to 7 days.<sup>4</sup> By reducing the number of microorganisms, Mepilex Border Ag may also reduce odor.

## Benefits of Mepilex Border Ag

- Minimizes pain and trauma at dressing change<sup>1</sup>
- Effective, sustained release of silver<sup>5</sup>
- Self-adherent - no secondary fixation required
- Promotes patient comfort during wear
- Low potential for skin irritation and allergy
- Barrier to outside moisture, viruses and bacteria<sup>†</sup>

## Areas of use

- Moderate to highly exuding wounds
- Pressure injury
- Leg and foot injury
- Surgical wound
- Partial thickness burns
- Traumatic wounds (e.g., skin tears and secondary healing wounds)

**Wear time:** Mepilex Border Ag may be left in place for up to seven days, depending on the patient, the condition of the wound and surrounding skin, or as indicated by accepted clinical practice.



Hip incision

Knee incision

Chest incision

Cesarean

## Mepilex Border Ag ordering information

Product Code	Size	Pcs/box	Pcs/case	HCPCS
395290	3" x 3" (7.5 x 7.5 cm)	5	70	A6212
395390	4" x 4" (10 x 10 cm)	5	50	A6212
395490	6" x 6" (15 x 15 cm)	5	50	A6213
395690	6" x 8" (15 x 20 cm)	5	45	A6213

## Mepilex Border Sacrum Ag

382090	7.2" x 7.2" (18 x 18 cm)	5	40	A6213
382490	9.2" x 9.2" (23 x 23 cm)	5	25	A6213

References: 1. White R. et al. Evidence for atraumatic soft silicone wound dressing use. Wounds UK, 2005. 2. Dykes PJ. The effect of adhesive dressing edges on cutaneous irritancy and skin barrier function. J wound Care 2007; 16(3):97-100. 3. Wiberg A.B. et al. Preventing maceration with a soft silicone dressing: in-vitro evaluations. Poster presented at the 3rd Congress of the WUWHWS, Toronto, Canada, 2008. 4. Mölnlycke Mepilex Ag Product Data Sheet Report PD-358735-10 5. Data on file

# Mepilex® Border Sacrum

The PROVEN 5-layer foam pressure injury prevention dressing<sup>1</sup>

Tabs for easy handling

Wider sacral coverage than other dressings

Five full layers that help deflect extrinsic forces including friction and shear

Slightly thicker borders\*\* for easier handling and better adhesion

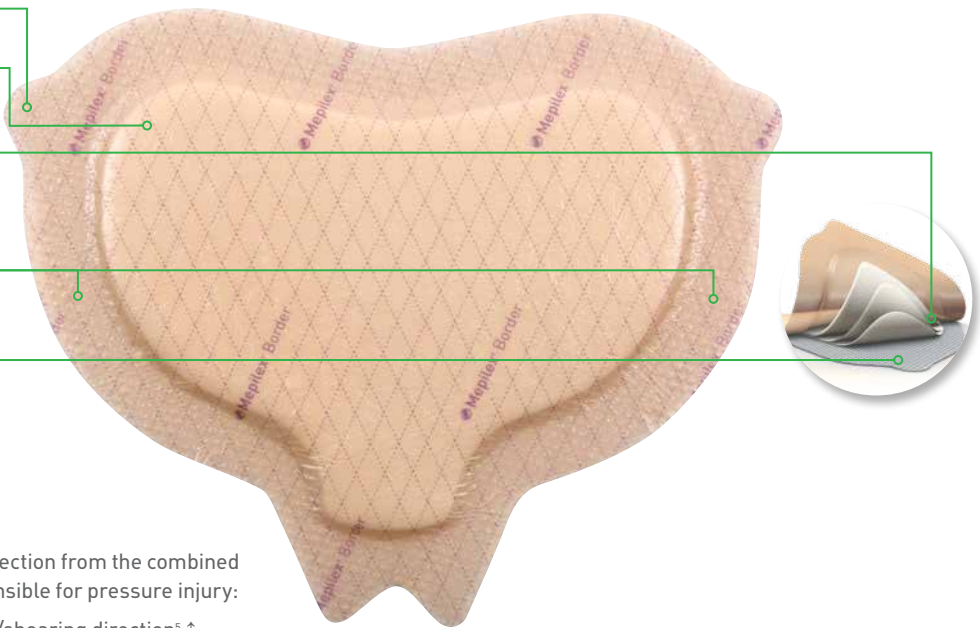
Safetac® technology reduces risk of maceration<sup>2,3</sup>

Structural integrity and protection even when wet<sup>4</sup>

**Deep Defense™ technology** for protection from the combined effect of the extrinsic forces responsible for pressure injury:

- Strength in the patient sliding/shearing direction<sup>5</sup> ↑
- Flexibility in the horizontal direction<sup>5</sup> ↔

\* Compared with original Mepilex Border Sacrum



## How Mepilex Border Sacrum works

Unlike other dressings, the proprietary Mepilex Border Sacrum is the ONLY dressing with Deep Defense™ technology, providing an optimal balance of strength and flexibility. This not only allows the dressing to provide optimal protection against shear in combination with other extrinsic factors, but also maintain its protective properties even with the absorption of sweat.<sup>5</sup> When used for wound management the Mepilex Border Sacrum is designed for a wide range of exuding wounds such as sacral pressure injury. It can be also used on dry/necrotic wounds in combination with gels.

## Areas of use

- Aid in the prevention of pressure injury\*
- Sacral area

**Wear time:** Mepilex Border Sacrum may be left in place for several days depending on the condition of the wound and surrounding skin, or as indicated by accepted clinical practice.

## Benefits of Mepilex Border Sacrum

- Shaped to fit the sacral area
- Handling tabs for ease of application and removal
- Absorbs moderate to high amounts of exudate
- Optimized protection and sealing at gluteal cleft
- Can be repositioned without losing its adherent properties
- Moisture proof and bacteria barrier† film backing

## Mepilex Border Sacrum ordering information

Product Code	Size	Pcs/box	Pcs/case	HCPCS
282055	6.3" x 7.9" (16 x 20 cm)	10	50	A6213
282455	8.7" x 9.8" (22 x 25 cm)	10	40	A6213

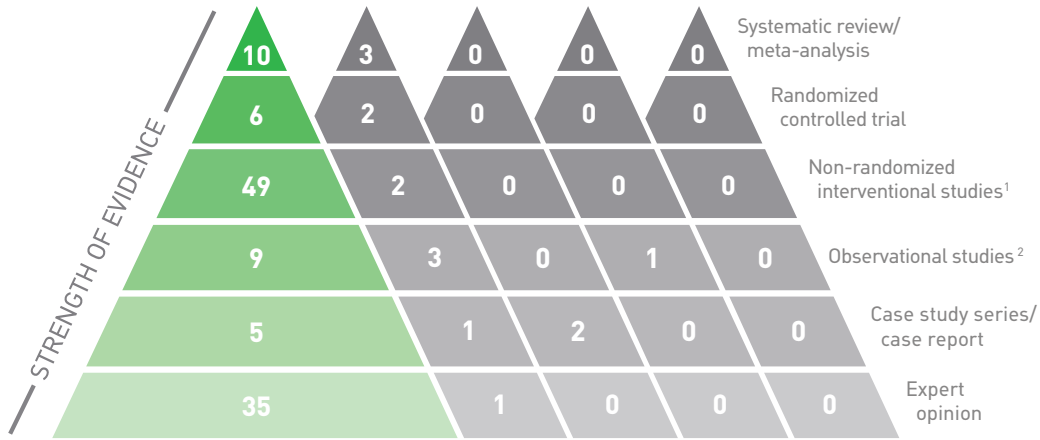
\* When used as part of an individualized, comprehensive pressure injury prevention protocol

† Microbes larger than 25 nm.

**References:** 1. Nahla Tayyib, RN, MN, BN, Fiona Coyer, RN, PhD, MScNsg, CritCareCert, PGCEA. Effectiveness of Pressure Ulcer Prevention Strategies for Adult Patients in Intensive Care Units: A Systematic Review. Worldviews on Evidence-Based Nursing, 2016; 00:0, 1-13. 2. Wiberg A.B. et al. Preventing maceration with a soft silicone dressing: in-vitro evaluations. Poster presented at the 3rd Congress of the WUWHS, Toronto, Canada, 2008. 3. Meaume, S., Van De Looerbosch, D., Heyman, H., et al. S. A study to compare a new self-adherent soft silicone dressing with a self-adherent polymer dressing in stage II pressure injury. Ostomy Wound Management 2003; 49 (9): 44-51. 4. Mölnlycke Health Care. Test Report - Tensile strength of dressings with different Moisture levels. LIMS ID: 20160808-003-app1. 5. Alten. Finite element analysis studying the effect of different prevention dressings on protecting soft tissues from high stresses and deformation. Ref No. 001. Data on file. 2017. 6. Mölnlycke Health Care, Test Report, PD-508784 Rev: 01



# Consider the evidence



1 Includes Interventional prospective clinical studies (contemporaneous control) + Interventional prospective clinical studies. (historical control)

2 Includes Observational prospective clinical studies + Observational retrospective clinical studies

Mölnlycke Health Care report GMCS/2017/102 V8. Dressings for pressure ulcer prevention: a review of the pre-clinical, clinical and economic evidence (April 2018). Data on file.

## Cost savings<sup>1</sup>

### Real-world health economic evidence<sup>1</sup>

Mepilex® Border Sacrum is the **only** 5-layer silicone foam dressing with **real-world** health economic evidence in pressure injury prevention demonstrating a **\$77** reduction in per patient treatment costs resulting in a **64%** savings within a cohort of **1.03m** patients.

Treatment costs fell from **\$120** per patient to **\$43** per patient, and hospitals used **1-2 dressings per 5+ hospital days**

Hospital-acquired pressure injury is common, costly and deadly – particularly Stage 3, 4 and “unstageable” pressure injuries (PSI-03), the effects of which cause approximately **60,000 deaths per year** in the U.S. and have an average **estimated cost of treatment ranging from \$500 to \$150,000.**<sup>11</sup>

\$\$\$\$\$\$\$\$\$\$\$\$\$\$\$\$ \$120

\$\$\$\$\$ \$43

**\$77**

Reduction in per patient treatment cost

References: 1. Padula, William V. Effectiveness and Value of Prophylactic 5-Layer Foam Sacral Dressings to Prevent Hospital-Acquired Pressure Injuries in Acute Care Hospitals: An Observational Cohort Study. J Wound Ostomy Continence Nurs. 2017;44(5):413-419.

# Mepilex® Border Heel

All-in-one heel shaped dressing for prevention\*\* and management of wounds

Safetac® technology **Safetac**  
TECHNOLOGY  
reduces risk of maceration<sup>1,2</sup>

Coverage of the malleoli

Five full layers to help deflect extrinsic forces including friction and shear

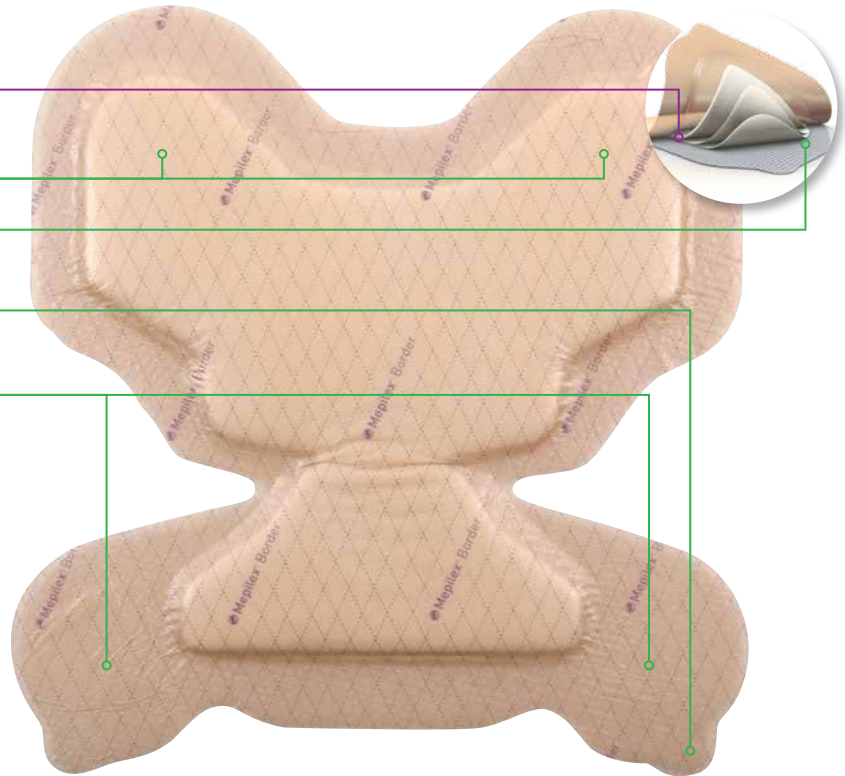
Handling tabs for easier heel checks\*\*

Slightly thicker borders\* for easy handling and better adhesion

### Deep Defense™ technology

for protection from the combined effect of the extrinsic forces responsible for pressure injury:<sup>3</sup>

- Strength in the patient sliding/shearing direction ↓
- Flexibility in the horizontal direction ↔



\*\* Compared with original Mepilex Border Heel

## How Mepilex Border Heel works

Each of the unique five layers of the Mepilex Border Heel serves a specific purpose, adding to its strength, durability and absorbency. No other dressing on the market exhibits these same properties - or the published, peer-reviewed results - in pressure injury prevention. The design of the Mepilex Border Heel is unique in both absorbing and distributing pressure, shear and friction.<sup>3,4</sup>

When used for management of wounds, Mepilex Border Heel effectively absorbs and retains exudate<sup>2</sup> and maintains a moist wound environment. The Safetac technology layer seals the wound edges, prevents exudate leakage onto the surrounding skin, thus minimizing the risk of maceration.<sup>1</sup> The Safetac technology layer allows the dressing to be changed without damaging the wound or surrounding skin,<sup>1</sup> or exposing the patient to additional pain.<sup>5</sup>

## Areas of use

Mepilex Border Heel is designed to be applied to the heel for the prevention of skin damage or for management of exuding wounds including pressure injury, diabetic foot injury, heel injury, traumatic wounds, and other secondary healing wounds.

## Benefits of Mepilex Border Heel

- All-in-one and self-adherent – no secondary fixation needed
- Shaped to cover the back, sides and bottom of the heel – no need to cut or adapt
- Safetac® technology minimizes pain and trauma at dressing changes<sup>5</sup>
- Can remain in place for several days
- Can be repositioned without losing its adherent properties
- Moisture proof and bacteria resistant (> 25nm) film backing<sup>6</sup>

**Wear time:** Mepilex Border Heel may be left in place for several days depending on the condition of the wound and surrounding skin, or as indicated by accepted clinical practice.

## Mepilex Border Heel ordering information

Product Code	Size	Pcs/box	Pcs/case	HCPCS
282790	8.7"x9.1" (22 x 23 cm)	10	30	A6210

**References:** 1. Wiberg A.B. et al. Preventing maceration with a soft silicone dressing: in-vitro evaluations. Poster presented at the 3rd Congress of the WUWHs, Toronto, Canada, 2008. 2. Meaume, S., Van De Loooverbosch, D., Heyman, H., et al. S. A study to compare a new self-adherent soft silicone dressing with a self-adherent polymer dressing in stage II pressure injury. *Ostomy Wound Management* 2003; 49 (9): 44-51 3. Levy A., Frank, M.B., Gefen A. The biomechanical efficacy of dressings in preventing heel injury. *J Tissue Viability* 2015; 24: 1, 1-11. 4. Call E. et al. Enhancing pressure prevention using wound dressings: What are the modes of action? *International Wound Journal*, July 30 2013. 5. White R. Evidence for atraumatic soft silicone wound dressing use. *Wounds UK*. Nov 20015, pp104-109 6. Molnlycke Health Care, Test Report PD-508784 Rev: 01

\* When used as part of an individualized, comprehensive pressure injury prevention protocol

† Microbes larger than 25 nm.

# Mepilex® Border Lite

The self-adherent all-in-one thin bordered foam dressing

## Safetac technology layer

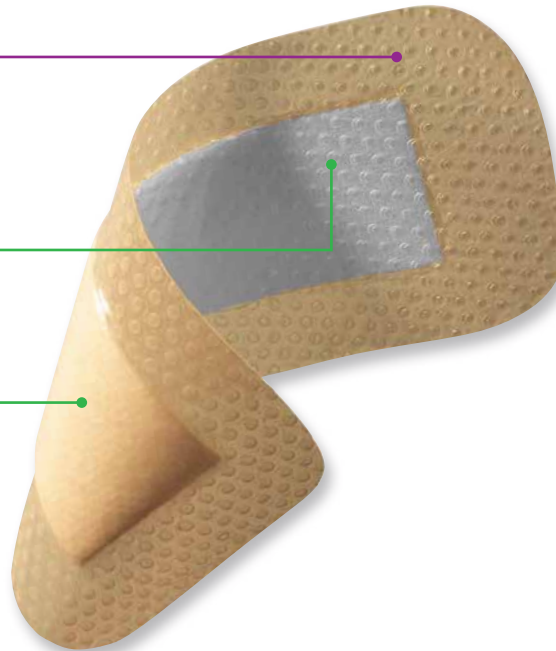
- Reduces pain and trauma during dressing change<sup>1</sup>
- Seals the wound margins and reduces risk of maceration<sup>2</sup>

## 2-layer pad

- Absorbs exudate
- Maintains integrity

## Polyurethane backing film

- High MVTR<sup>3</sup>
- Moisture proof
- Bacteria and viral barrier<sup>†</sup>



## How Mepilex Border Lite works

Mepilex Border Lite is a thin and conformable version of Mepilex Border, ideal for body contours and hard to dress areas and is available in smaller sizes. It is a self-adherent dressing that absorbs exudate, maintains a moist wound environment and minimizes the risk of peri-wound maceration.<sup>3</sup> The Safetac technology layer also minimizes pain and trauma to the wound and surrounding skin.<sup>1</sup>

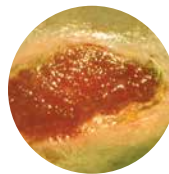
## Benefits of Mepilex Border Lite

- Minimizes trauma to the wound and pain to the patient during dressing changes<sup>1</sup>
- Excellent fit to the wound and body contours
- A thin and conformable all-in-one dressing
- Broad selection of sizes
- Minimizes the risk of maceration<sup>2</sup>
- Does not adhere to moist wound
- Adheres gently and securely to dry, intact surrounding skin

## Areas of use

- Non to low exuding wounds
- Leg and foot injury
- Pressure injury
- Traumatic wounds (e.g., abrasions, cuts, finger injuries, blisters, and skin tears)
- Protection of compromised and/or fragile skin

**Wear time:** Mepilex Border Lite may be left in place for several days depending on the condition of the wound and surrounding skin, or as indicated by accepted clinical practice.



Granulating wound



Lower extremity ulcer



Primary wound protection

## Mepilex Border Lite ordering information

Product Code	Size	Pcs/box	Pcs/case	HCPCS
281000	1.6" x 2" (4 x 5 cm)	10	70	A6212
281100	2" x 5" (5 x 12.5 cm)	5	65	A6212
281200	3" x 3" (7.5 x 7.5 cm)	5	70	A6212
281300	4" x 4" (10 x 10 cm)	5	50	A6212
281500	6" x 6" (15 x 15 cm)	5	50	A6213

**References:** 1. White R. et al. Evidence for atraumatic soft silicone wound dressing use. Wounds UK, 2005. 2. Wiberg A.B. et al. Preventing maceration with a soft silicone dressing: in-vitro evaluations. Poster presented at the 3rd Congress of the WUWHs, Toronto, Canada, 2008. 3. External lab report: SP FX2260114.

† Microbes larger than 25 nm.

# Mepilex® Border Post-Op

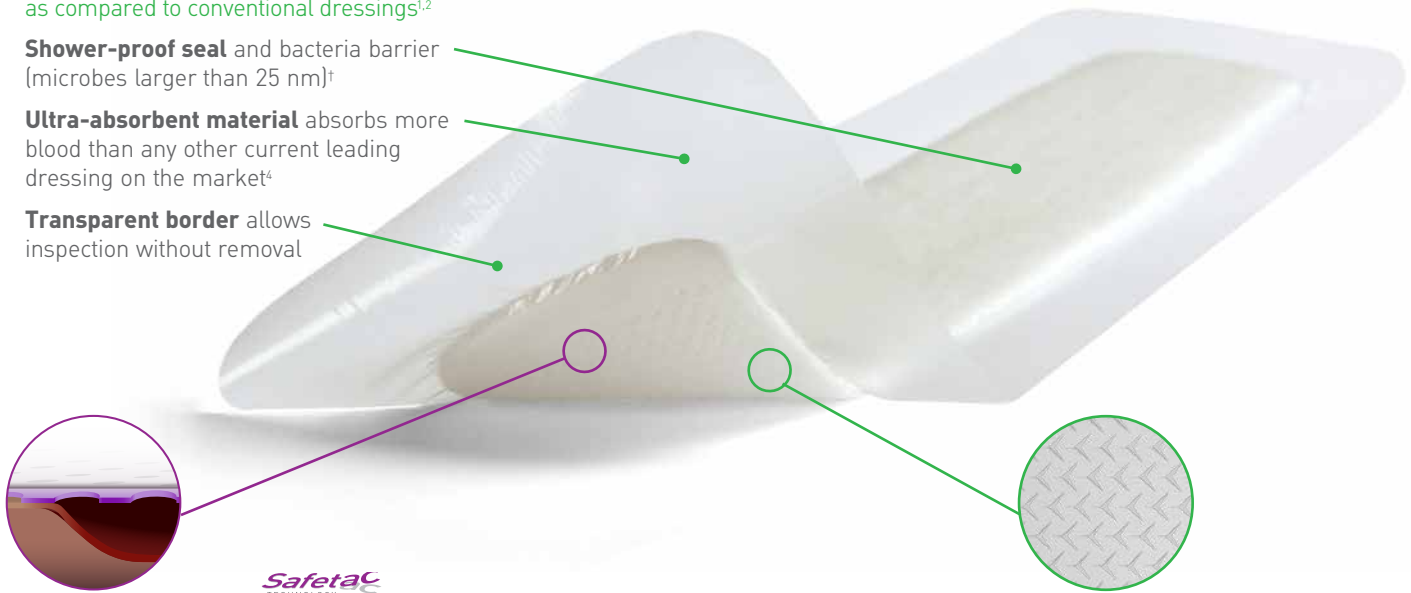
The flexible all-in-one post-op dressing

Supports longer wear times and low frequency as compared to conventional dressings<sup>1,2</sup>

**Shower-proof seal** and bacteria barrier (microbes larger than 25 nm)<sup>†</sup>

**Ultra-absorbent material** absorbs more blood than any other current leading dressing on the market<sup>4</sup>

**Transparent border** allows inspection without removal



Clinically shown to minimize dressing-related skin damage and reduce pain<sup>1,10</sup>

**Safetac® technology interface** adheres gently, maintaining skin integrity

Supports early patient mobilization<sup>9</sup>

**Unique flex-cut pad** stretches in all directions, conforming to the body even as it moves



## How Mepilex Border Post-Op works

Mepilex Border Post-Op is an all-in-one post-op dressing that effectively absorbs and retains exudate. The Safetac® minimizes painful wound and peri-wound skin damage at dressing removal.<sup>1,2,6</sup> The Safetac interface seals the wound edges, preventing exudate from leaking onto surrounding skin, minimizing risk of maceration.<sup>6</sup> The flex-cut pad gives high flexibility and good conformability over joints, such as knees or hips, promoting patient mobilization.<sup>1</sup>

## Benefits of Mepilex Border Post-Op

- Minimizes skin damage, including blistering<sup>9</sup>
- Very high absorption capacity<sup>3,4</sup> lead to fewer dressing changes<sup>1,2</sup>
- High flexibility giving very good comfort and conformability<sup>7</sup>
- Can be lifted and adjusted without losing its adherent properties
- Wide transparent borders for easy wound area inspection
- Bacteria and viral barrier<sup>†</sup>
- Shower proof

## Areas of use

Mepilex Border Post-Op is designed for exuding wounds. It is intended for acute wounds, such as surgical wounds, cuts and abrasions. It is optimized for post-op use and blood absorption. The design provides high flexibility and is ideal for use over joints like hips and knees.

## Mepilex Border Post-Op

Product Code	Size inches (cm)	Pcs/box	Pcs/case	HCPCS
496300	4x6 (10x15cm)	10	100	A4649
496405	4x8 (10x20cm)	5	25	A4649
496455	4x10 (10x25cm)	5	30	A4649
496605	4x12 (10x30cm)	5	25	A4649
496650	4x14 (10x35cm)	5	55	A4649

Additional post-op SKUs located in Ordering Information

† Microbes larger than 25 nm.

**References:** 1. Bredow, J. et al. Randomized clinical trial to evaluate the performance of a flexible self-adherent absorbent dressing coated with a soft silicone layer compared to a standard wound dressing after hip, knee or spinal surgery in comparison to standard wound dressing. Poster presentation at 5th Congress of WUWHs, Florence, Italy 2016. 2. Zarghooni, K. et al. Is the use of modern versus conventional wound dressings warranted after primary knee and hip arthroplasty? Acta Orthopaedica Belgica 2015;81(4):768-775 3. Feili, F et al. Fluid Handling Properties of Post-Operative Wound Dressings. Data on file 4. Feili, F et al. Blood Absorption Capacity of Post-Operative Wound Dressings. Data on file. 5. Johansson C et al. Preventing post-operative blisters following hip and knee arthroplasty. Wounds International, 2012. 6. White, R. Evidence for atraumatic soft silicone wound dressing use. Wounds UK 2005; 1:3, 104-109 7. Van Overschelde P. et al. Effect of two modern dressing on patient outcome after primary hip and knee arthroplasty: a prospective, a randomised controlled study. Oral presentation at the WUWHs conference, Florence, 2016. 9. Korber, K. Clinical Evaluation of a New Silver Soft Silicone Postoperative Dressing in Total Knee and Hip Arthroplasty. POAS Fall 2017. 10. Dykes, P.J., et al. Effects of adhesive dressings on the stratum corneum of skin. J Wound Care 2001; 10: 2, 7-10.



# Mepilex® Border Post-Op Ag

The flexible and antimicrobial all-in-one post-op dressing

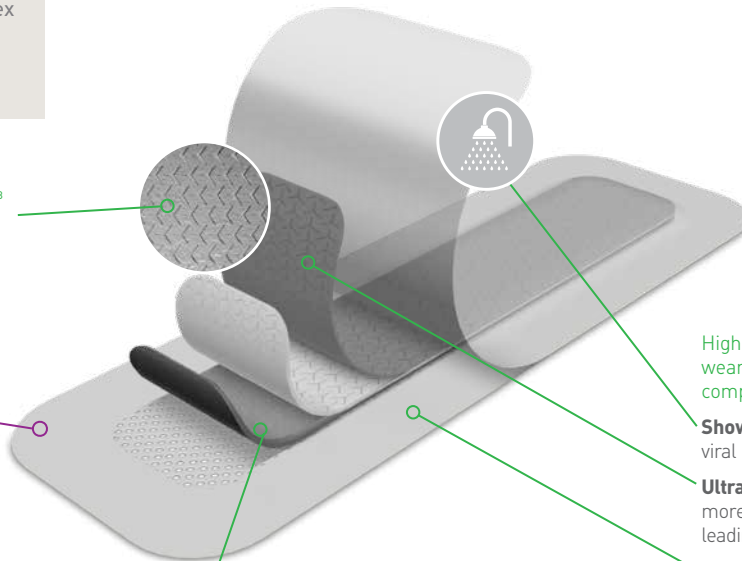
Specifically designed for incisions, Mepilex Border Post-Op Ag helps you balance the many demands of incision management and deliver the best possible care.

## Supports early patient mobilization<sup>8</sup>

**Unique flex-cut pad** stretches in all directions, conforming to the body even as it moves

Clinically shown to minimize dressing-related skin damage and reduce pain<sup>1,2</sup>

**Safetac technology** adheres gently, maintaining skin integrity



Shower-proof seal

High FHC which may support longer wear times and low frequency as compared to conventional dressings<sup>13</sup>

**Shower-proof seal** and bacteria and viral barrier†

**Ultra-absorbent material** absorbs more blood than any other current leading dressing on the market†

**Transparent border** allows inspection without removal

**Rapid, sustained release of ionic silver**

**Antimicrobial activity** within 30 minutes with sustained effect up to 7 days<sup>3-5</sup>

## How Mepilex Border Post-Op Ag works

Mepilex Border Post-Op Ag is an all-in-one post-op dressing that effectively absorbs and retains exudate. The Safetac interface minimizes painful wound and peri-wound skin damage at dressing removal.<sup>1,2,9</sup> The Safetac interface seals the wound edges, preventing exudate from leaking onto surrounding skin, minimizing risk of maceration.<sup>9</sup> The flex-cut pad gives high flexibility and good conformability over joints, such as knees or hips, promoting patient mobilization.<sup>1</sup>

Mepilex Border Post-Op Ag inactivates wound related pathogens within 30 minutes with sustained effect up to 7 days.<sup>3-5</sup> By reducing the number of microorganisms, Mepilex Border Post-Op Ag may also reduce odor.

## Benefits of Mepilex Border Post-Op Ag

- Minimizes skin damage, including blistering<sup>1,3</sup>
- Effective, sustained release of silver<sup>3,4,5</sup>
- Very high absorption<sup>6,7</sup> capacity leading to fewer dressing changes<sup>1</sup>
- High flexibility giving very good comfort and conformability<sup>10</sup>
- Can be lifted and adjusted without losing its adherent properties
- Wide transparent borders for easy wound area inspection
- Bacteria and viral barrier†
- Shower proof

## Areas of use

Mepilex Border Post-Op Ag is designed for exuding wounds, when an antimicrobial dressing is indicated. It is indicated for acute wounds, such as surgical and traumatic wounds. It is optimized for post-op use and blood absorption. The design provides high flexibility and makes it ideal for use over joints like hips and knees.

## Mepilex Border Post-Op Ag

Product Code	Size inches (cm)	Pcs/box	Pcs/case	HCPCS
498300	4x6 (10x15cm)	5	70	A6212
498400	4x8 (10x20cm)	5	25	A6212
498450	4x10 (10x25cm)	5	35	A6212
498600	4x12 (10x30cm)	5	25	A6213
498650	4x14 (10x35cm)	5	60	A6213

Additional post-op SKUs located in Ordering Information

† Microbes larger than 25 nm.

**References:** 1. Bredow, J. et al. Randomized clinical trial to evaluate the performance of a flexible self-adherent absorbent dressing coated with a soft silicone layer compared to a standard wound dressing after hip, knee or spinal surgery in comparison to standard wound dressing. Poster presentation at 5th Congress of WUWHs, Florence, Italy 2016. 2. Zarghooni, K. et al. Is the use of modern versus conventional wound dressings warranted after primary knee and hip arthroplasty? Acta Orthopaedica Belgica 2015;81(4):768-775 3. Data on file. Laboratory test 20151026-005. 4. Data on file. Laboratory test 20151109-002 5. Data on file. Laboratory test 20151110-007 6. Feili, F et al. Fluid Handling Properties of Antimicrobial Post-Operative Wound Dressings. Data on file. 7. Feili, F et al. Blood Absorption Capacity of Post-Operative Wound Dressings. Data on file. 8. Johansson C et al. Preventing post-operative blisters following hip and knee arthroplasty. Wounds International, 2012. 9. White, R. Evidence for atraumatic soft silicone wound dressing use. Wounds UK 2005; 1: 3, 104-109. 10. Van Overschelde P. et al. Effect of two modern dressing on patient outcome after primary hip and knee arthroplasty: a prospective, a randomised controlled study. Oral presentation at the WUWHs conference, Florence, 2016. 11. Data on file. Laboratory test 20151125-003. 12. Dykes, P.J., et al. Effects of adhesive dressings on the stratum corneum of skin. J Wound Care 2001; 10: 2, 7-10. 13. Lab report 2015 1125-003

## The absorbent conformable foam dressing

### Safetac technology layer



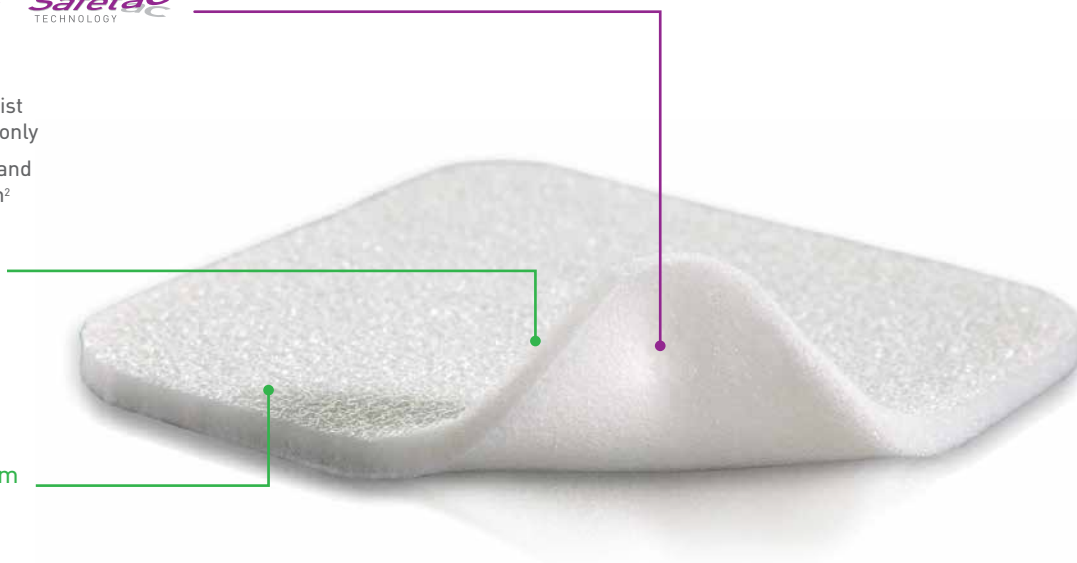
- Reduces pain and trauma during dressing change<sup>1</sup>
- Does not adhere to the moist wound bed but to dry skin only
- Seals the wound margins and reduces risk of maceration<sup>2</sup>

### Polyurethane foam pad

- Absorbs exudate
- Conformable
- May be used under compression

### Polyurethane backing film

- Breathable
- Moisture proof
- Bacteria and viral barrier†



## How Mepilex works

Mepilex is a soft and highly conformable foam dressing that absorbs exudate and maintains a moist wound environment. The Safetac technology layer seals the wound edges, preventing the exudate from leaking onto the surrounding skin, thus minimizing the risk of maceration.<sup>2</sup> The Safetac technology layer allows the dressing to be changed without damaging the wound or surrounding skin or exposing the patient to additional pain.<sup>1</sup>

## Benefits of Mepilex

- Minimizes pain and trauma at dressing changes<sup>1</sup>
- Stays in place allowing easy application of compression or retention bandages
- Well suited for use under compression bandages
- May be cut to suit various wound shapes and difficult-to-dress locations
- Promotes patient comfort during wear
- May remain in place for several days depending on the condition of the wound
- May be adjusted without losing its adherent properties

**Wear time:** Mepilex may be left in place for several days depending on the condition of the wound and surrounding skin, or as indicated by accepted clinical practice.

## Areas of use

- Moderately exuding wounds
- Leg and foot injury
- Pressure injury
- Under compression
- Graft and donor sites
- Traumatic wounds (e.g., skin tears and secondary healing wounds)

## Mepilex ordering information



Product Code	Size	Pcs/box	Pcs/case	HCPCS
294199	4" x 4" (10 x 10 cm)	5	70	A6209
294090	4" x 5" (10 x 12 cm)	5	50	A6210
294299	4" x 8" (10 x 20 cm)	5	45	A6210
294399	6" x 6" (15 x 15 cm)	5	25	A6210
294499	8" x 8" (20 x 20 cm)	5	20	A6211
294500	8" x 20" (20 x 50 cm)	2	12	A6211

## Mepilex Heel ordering information



288100	5" x 8" (13 x 20 cm)	5	25	A6210
--------	----------------------	---	----	-------

† Microbes larger than 25 nm.

References: 1. White R. et al. Evidence for atraumatic soft silicone wound dressing use. Wounds UK, 2005. 2. Wiberg A.B. et al. Preventing maceration with a soft silicone dressing: in-vitro evaluations. Poster presented at the 3rd Congress of the WUWHS, Toronto, Canada, 2008.

## The absorbent conformable antimicrobial foam dressing

### Safetac technology layer

- Reduces pain and trauma during dressing change<sup>1</sup>
- Does not adhere to the moist wound bed but to dry skin only
- Seals the wound margins and reduces risk of maceration<sup>2</sup>

### Polyurethane foam pad

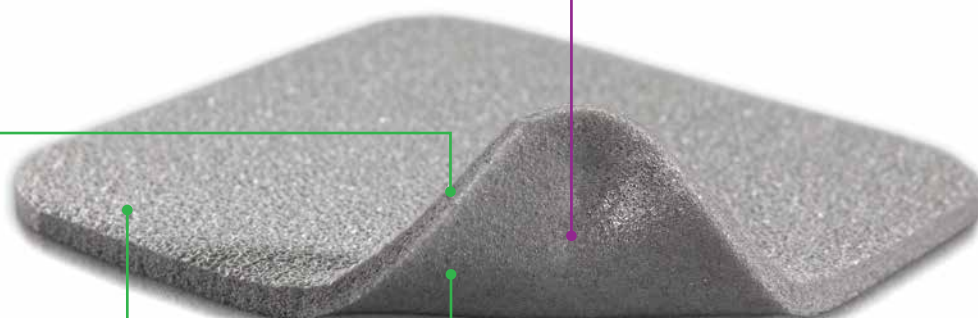
- Absorbs exudate
- Conformable
- May be used under compression

### Polyurethane backing film

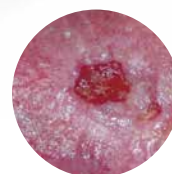
- Breathable
- Moisture proof
- Bacteria and viral barrier<sup>†</sup>

### Powerful silver performance

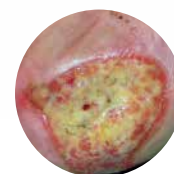
- Antimicrobial activity within 30 minutes and sustained effect for up to 7 days<sup>3</sup>



Partial thickness burn



Infected leg ulcer



Pressure ulcer

## How Mepilex Ag works

Mepilex Ag is a soft and highly conformable antimicrobial foam dressing that absorbs exudate and maintains a moist wound environment. The Safetac technology layer seals the wound edges, preventing the exudate from leaking onto the surrounding skin, thus minimizing the risk of maceration.<sup>3</sup> The Safetac technology layer allows that the dressing can be changed without damaging the wound or surrounding skin or exposing the patient to additional pain.

Mepilex Ag starts to inactivate wound related pathogens within 30 minutes with sustained effect up to 7 days.<sup>3</sup> By reducing the number of microorganisms, Mepilex Ag may also reduce odor.

## Benefits of Mepilex Ag

- Minimizes pain and trauma at dressing changes<sup>1</sup>
- Stays in place allowing easy application of compression or retention bandages
- Well suited for use under compression bandages
- May be cut to suit various wound shapes and difficult-to-dress locations
- Promotes patient comfort during wear
- May remain in place for several days depending on the condition of the wound
- May be adjusted without losing its adherent properties
- Low potential for skin irritation and allergy

**Wear time:** Mepilex Ag may be left in place for up to 7 days depending on the condition of the wound and surrounding skin, or as indicated by accepted clinical practice.

## Areas of use

- Moderately exuding wounds
- Leg and foot injury
- Pressure injury
- Under compression
- Graft and donor sites
- Partial Thickness burns
- Traumatic wounds (e.g., skin tears and secondary healing wounds)

## Mepilex Ag ordering information



Product Code	Size	Pcs/box	Pcs/case	HCPCS
287100	4" x 4" (10 x 10 cm)	5	70	A6209
287090	4" x 5" (10 x 12 cm)	5	70	A6210
287200	4" x 8" (10 x 20 cm)	5	45	A6210
287300	6" x 6" (15 x 15 cm)	5	25	A6210
287400	8" x 8" (20 x 20 cm)	5	20	A6211
287500	8" x 20" (20 x 50 cm)	2	10	A6211

References: 1. White R. et al. Evidence for atraumatic soft silicone wound dressing use. Wounds UK, 2005. 2. Wiberg A.B. et al. Preventing maceration with a soft silicone dressing: in-vitro evaluations. Poster presented at the 3rd Congress of the WUWHs, Toronto, Canada, 2008. 3. Molnlycke Mepilex AG Product Data Sheet Report PD-358735-10

† Microbes larger than 25 nm.

# Mepilex® XT

The absorbent conformable foam dressing that handles both low- and high-viscosity fluid

## Safetac® technology layer

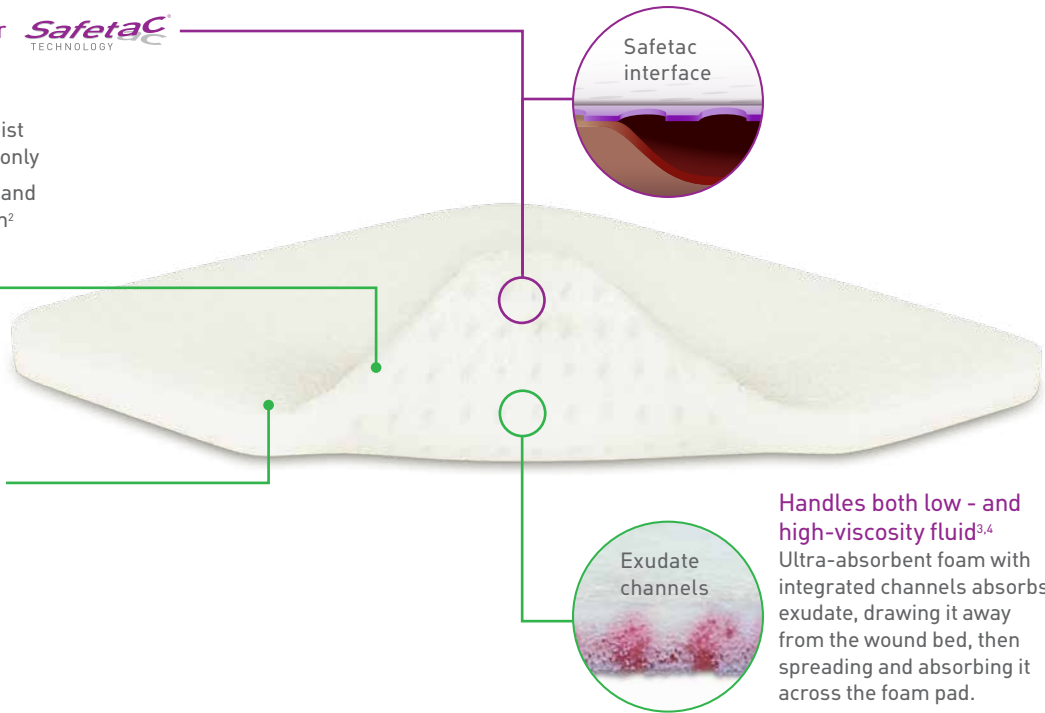
- Reduces pain and trauma during dressing change<sup>1</sup>
- Does not adhere to the moist wound bed but to dry skin only
- Seals the wound margins and reduces risk of maceration<sup>2</sup>

## Polyurethane foam pad

- Enhanced exudate management capability
- Conformable and flexible foam

## Breathable polyurethane backing film

- Water proof
- Barrier to virus and bacteria<sup>7</sup>



**Handles both low - and high-viscosity fluid<sup>3,4</sup>**  
Ultra-absorbent foam with integrated channels absorbs exudate, drawing it away from the wound bed, then spreading and absorbing it across the foam pad.

## How Mepilex XT works

Mepilex XT is a soft and conformable foam dressing with integrated channels, designed to transfer exudate rapidly<sup>4-6</sup> into the absorbent foam pad.

Safetac technology seals the wound edges, preventing exudate from leaking onto the surrounding skin, thus minimizing the risk of maceration.<sup>2</sup> Safetac technology also allows the dressing to be changed with minimized risk of damaging the wound or surrounding skin or exposing the patient to additional pain.<sup>1,2</sup>

## Benefits of Mepilex XT

- Absorbs both low and high viscosity fluid<sup>3,4</sup>
- Can be used on all exuding wound healing stages<sup>5</sup>
- Minimizes pain and skin damage at dressing changes<sup>1</sup>
- Can be used under compression bandages
- Requires fewer dressing changes compared to other foam dressings<sup>5</sup>
- Can be cut to suit various wound shapes and difficult-to-dress locations

## Areas of use

Mepilex XT is designed for a wide range of exuding acute and chronic wounds in all healing stages, such as leg and foot injury, pressure injury and traumatic wounds.

## Mepilex XT ordering information

Product Code	Size	Pcs/box	Pcs/case	HCPCS
211100	4" x 4" (10 x 10 cm)	5	70	A6209
211200	4" x 8" (10 x 20 cm)	5	45	A6210
211300	6" x 6" (15 x 15 cm)	5	25	A6210
211400	8" x 8" (20 x 20 cm)	5	20	A6211

**References:** 1. White R. et al. Evidence for atraumatic soft silicone wound dressing use. Wounds UK, 2005. 2. Wiberg A.B. et al. Preventing maceration with a soft silicone dressing: in-vitro evaluations. Poster presented at the 3rd Congress of the WUWHS, Toronto, Canada, 2008. 3. Mölnlycke Health Care data on file report 20130104-004. 4. Mölnlycke Health Care data on file. Mepilex XT Fluid Handling capacity report. 5. Lantin, A., Diegel, C., Scheske, J., Schmitt, C., Bronner, A., Burkhardt, S. Use of a new foam dressing with softsilicone in German specialist wound care centres. E-poster presentation at European Wound Management Association conference, London, UK, 2015. 6. Mölnlycke Health Care data on file report MXTCost1115

† Microbes larger than 25 nm.



# Mepilex® Lite

The absorbent conformable thin foam dressing

## Safetac technology layer

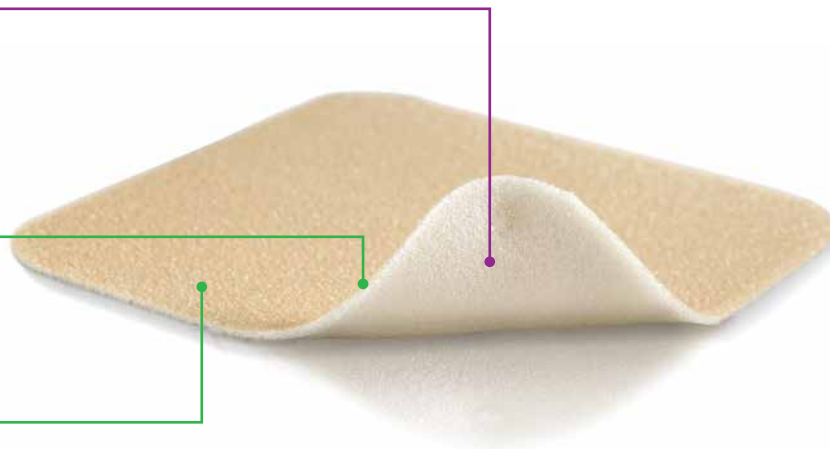
- Reduces pain and trauma during dressing change<sup>1</sup>
- Does not adhere to the moist wound bed but to dry skin only
- Seals the wound margins and reduces risk of maceration<sup>2</sup>

## Thin foam pad

- Absorbs exudate
- May be used under compression
- Conformable

## Polyurethane backing film

- Moisture resistant
- Bacteria and viral barrier<sup>†</sup>



## How Mepilex Lite works

Mepilex Lite is a highly conformable dressing that absorbs exudate and maintains a moist wound environment. The Safetac technology layer seals around the wound edges, preventing the exudate from leaking onto the surrounding skin, thus minimizing the risk of maceration.<sup>2</sup> The Safetac technology layer also allows for atraumatic dressing changes.<sup>1</sup> Mepilex Lite may be cut to suit various wound shapes and locations.

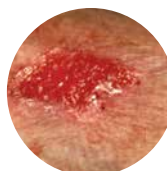
## Benefits of Mepilex Lite

- Atraumatic to the wound and surrounding skin on removal<sup>1</sup>
- Promotes patient comfort during wear and minimizes pain upon removal<sup>1</sup>
- Minimizes the risk of maceration<sup>2</sup>
- Conforms well to body contours
- Thin and comfortable to wear
- Easy to handle; may be cut for customization
- Maintains a moist wound environment

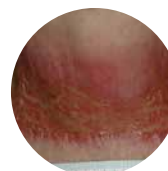
**Wear time:** Mepilex Lite may be left in place for several days depending on the condition of the wound and surrounding skin, or as indicated by accepted clinical practice.

## Areas of use

- Non to low exuding wounds
- Pressure injury
- Radiation skin reactions
- Under compression bandaging
- Including peristomal irritation
- Protection of compromised and/or fragile skin
- Leg and foot injury
- Partial thickness burns
- Epidermolysis Bullosa
- In combination with gels



Non to low exuding wound



Radiation skin reaction



Foot ulcer

## Mepilex Lite ordering information

Product Code	Size	Pcs/box	Pcs/case	HCPCS
284090	2.4" x 3.4" (6 x 8.5 cm)	5	70	A6209
284190	4" x 4" (10 x 10 cm)	5	50	A6209
284390	6" x 6" (15 x 15 cm)	5	50	A6210
284599	8" x 20" (20 x 50 cm)	4	24	—

**References:** 1. White R. et al. Evidence for atraumatic soft silicone wound dressing use. Wounds UK, 2005. 2. Wiberg A.B. et al. Preventing maceration with a soft silicone dressing: in-vitro evaluations. Poster presented at the 3rd Congress of the WUWHS, Toronto, Canada, 2008.

† Microbes larger than 25 nm.

# Mepilex® Transfer

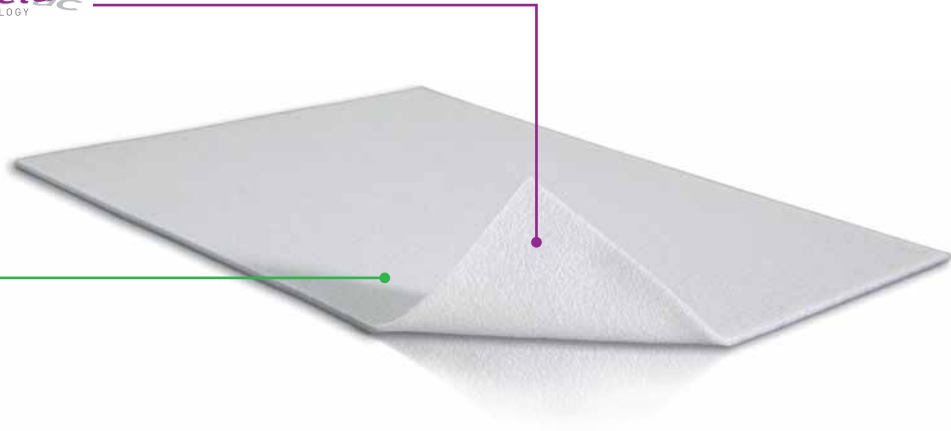
The thin and conformable exudate transfer foam dressing

## Safetac technology layer

- Reduces pain and trauma during dressing change<sup>1</sup>
- Does not adhere to the moist wound bed but to dry skin only
- Seals the wound margins and reduces risk of maceration<sup>2</sup>

## Thin polyurethane foam layer

- Transfers the exudate away from the wound
- Conforms well on difficult-to-dress wounds
- Ideal for large, exuding wounds



## How Mepilex Transfer works

Mepilex Transfer is thin and conformable for even the most difficult to dress wounds. The Safetac technology layer allows for direct contact to the wound and the surrounding skin, including uneven surfaces. As the Safetac technology layer seals around the wound, the foam structure of Mepilex Transfer allows the exudate to move vertically into a secondary absorbent pad. Mepilex Transfer maintains a moist wound environment in combination with an appropriate secondary dressing.

## Benefits of Mepilex Transfer

- Transfers exudate away from the wound
- Atraumatic to the wound and surrounding skin on removal<sup>1</sup>
- Conforms well to body contours
- May be cut to shape
- Minimizes the risk of maceration<sup>2</sup>
- Promotes patient comfort during wear and minimizes pain upon removal<sup>1</sup>
- Suitable for large and/or fragile wounds

**Wear time:** Mepilex Transfer may be left in place for several days depending on the condition of the wound and surrounding skin, or as indicated by accepted clinical practice.

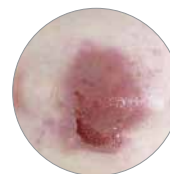
## Areas of use

- Exuding and difficult-to-dress wounds
- As a protective layer on non-exuding wounds
- Large areas with fragile skin
- Under compression

Apply an appropriate secondary dressing to maintain a moist wound environment.



Radiation-induced dermatitis



Epidermolysis Bullosa (EB)



Fungating malignant wound

## Mepilex Transfer ordering information

Product Code	Size	Pcs/box	Pcs/case	HCPCS
294899	6" x 8" (15 x 20 cm)	5	40	A6210
294599	8" x 20" (20 x 50 cm)	4	24	A6211

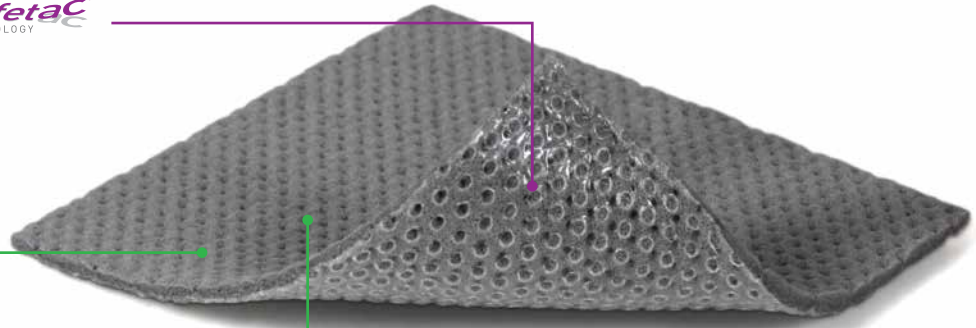
**References:** 1. White R. et al. Evidence for atraumatic soft silicone wound dressing use. Wounds UK, 2005. 2. Wiberg A.B. et al. Preventing maceration with a soft silicone dressing: in-vitro evaluations. Poster presented at the 3rd Congress of the WUWHS, Toronto, Canada, 2008.

The thin and conformable antimicrobial exudate transfer dressing

## Safetac technology layer



- Reduces pain and trauma during dressing change<sup>1</sup>
- Does not adhere to the moist wound bed but to dry skin only
- Seals the wound margins and reduces risk of maceration<sup>2</sup>
- The absence of a backing film allows exudate to transfer into a secondary dressing that can be changed as needed
- The antimicrobial silver impregnated, polyurethane foam transfers exudate into a secondary dressing



## How Mepilex Transfer Ag works

Mepilex Transfer Ag is a thin and conformable, antimicrobial wound contact layer. The Safetac technology layer allows direct contact to the wound and the surrounding skin, including uneven surfaces. As the Safetac technology layer seals around the wound, the foam structure of Mepilex® Transfer Ag allows exudate to move vertically into a secondary absorbent dressing. Mepilex Transfer Ag maintains a moist wound environment in combination with an appropriate secondary dressing. Mepilex Transfer Ag inactivates wound related pathogens within 30 minutes<sup>3</sup> with a sustained effect up to 14 days.<sup>4</sup> By reducing the number of microorganisms, Mepilex Transfer Ag may also reduce odor.

## Benefits of Mepilex® Transfer Ag

- Minimizes pain and trauma at dressing change<sup>1,2</sup>
- Effective, sustained release of silver provides rapid antimicrobial effect within 30 minutes<sup>3</sup> that is sustained for up to 14 days<sup>4</sup>
- Promotes patient comfort during wear
- Conforms well to body contours
- May be cut to desired shapes
- Effective under compression bandages

**Wear time:** Mepilex Transfer Ag may be left in place for up to 14 days depending on the patient, condition of the wound and surrounding skin, or as indicated by accepted clinical practice.

## Areas of use

Mepilex Transfer Ag is indicated for low to high exuding wounds including difficult-to-dress areas where an antimicrobial effect is needed, including:

- Traumatic wounds
- Partial thickness burns
- Surgical wounds
- Foot and leg injury
- Pressure injury

Mepilex Transfer Ag can be used under compression bandaging.

## Mepilex Transfer Ag ordering information

Product Code	Size	Pcs/box	Pcs/case	HCPSC
394190	4" x 5" (10 x 12.5 cm)	5	50	A6210
394890	6" x 8" (15 x 20 cm)	10	50	A6210
394590	8" x 20" (20 x 50 cm)	2	12	A6211

**References:** 1. White R. A multinational survey of the assessment of pain when removing dressings. Wounds UK, 2008. 2. Dykes PJ et al. Effects of adhesive dressings on the stratum corneum of the skin. J Wound Care 2001; 10(2):7-10. 3. Molnlycke Mepilex AG Product Data Sheet Report PD-358735-10 4. Molnlycke testing Report Antimicrobial effect of Mepilex Transfer Ag and competitors against wound pathogens PD-455823. 2016

# Lyof foam® Max / Lyof foam Max T

The highly absorbent polyurethane foam dressing

## Polyurethane backing film

- Moisture vapor permeable
- Moisture resistant
- Provides bacterial and viral barrier†

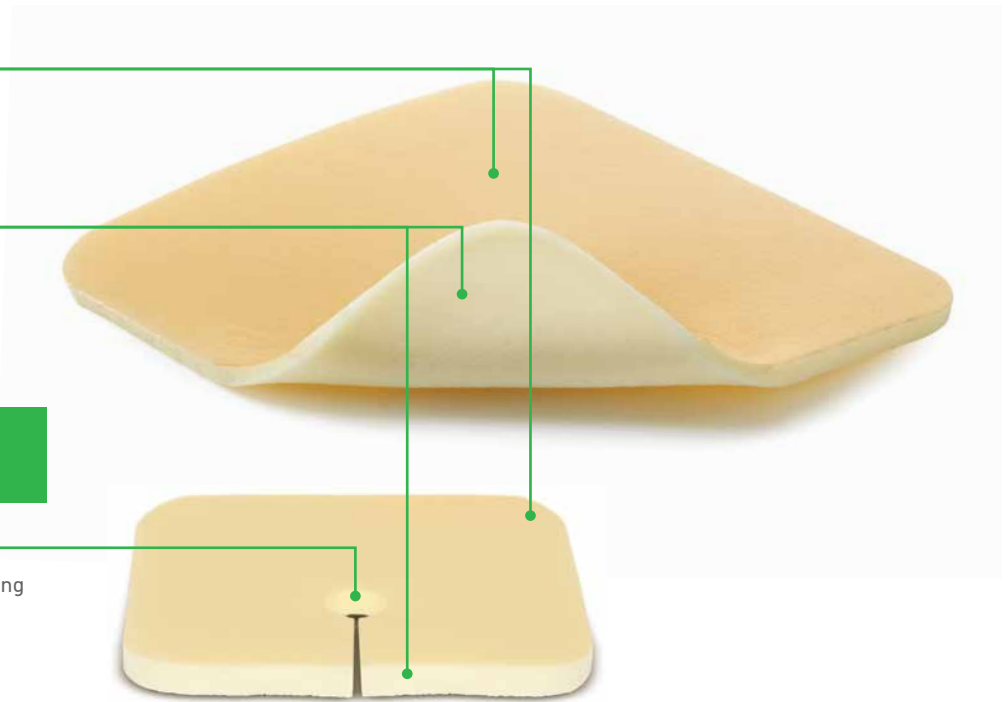
## Hydrophilic polyurethane foam

- Non adhesive
- Soft, conformable and easy to apply and remove

## Lyof foam Max T

### Aperture designed for use around tracheostomy tubes

- One third from the edge of the dressing
- Allows optimal handling around tracheostomy tube



## How Lyof foam Max / Lyof foam Max T works

Lyof foam Max T is a soft tracheostomy dressing that absorbs exudate/secretion and provides protection for the skin around the tracheostomy tube.

## Benefits of Lyof foam Max / Lyof foam Max T

- Moisture resistant backing film acts as a barrier to bacteria and viral penetration†
- Protects and cushions the skin around the tracheostomy tube
- Easy to apply and remove
- Soft and conformable
- Provides comfort to patients

**Wear time:** Lyof foam Max may be left in place for several days depending on the nature and condition of the wound and the level of exudate.

Lyof foam Max T should be changed according to clinical practice or when saturated.

## Areas of use

Lyof foam Max is designed for the management of moderate to heavily exuding wounds such as leg injury and pressure injury.

Through an excellent exudate management, Lyof foam® Max creates a moist wound environment optimal for wound healing.

Lyof foam Max T is designed for use around tracheostomy tube to provide absorption and skin protection.

## Lyof foam Max ordering information

Product Code	Size	Pcs/box	HCPCS
603200	3" x 3.4" (7.5 x 8.5 cm)	10	A6209
603201	4" x 4" (10 x 10 cm)	10	A6209
603203	4" x 8" (10 x 20 cm)	10	A6210
603204	6" x 6" (15 x 15 cm)	10	A6210
603205	6" x 8" (15 x 15 cm)	10	A6210
603206	8" x 8" (20 x 20 cm)	10	A6211

## Lyof foam Max T ordering information

Product Code	Size	Pcs/box	HCPCS
603207	3.6" x 3.6" (9 x 9 cm)	10	—

† Microbes larger than 25 nm.



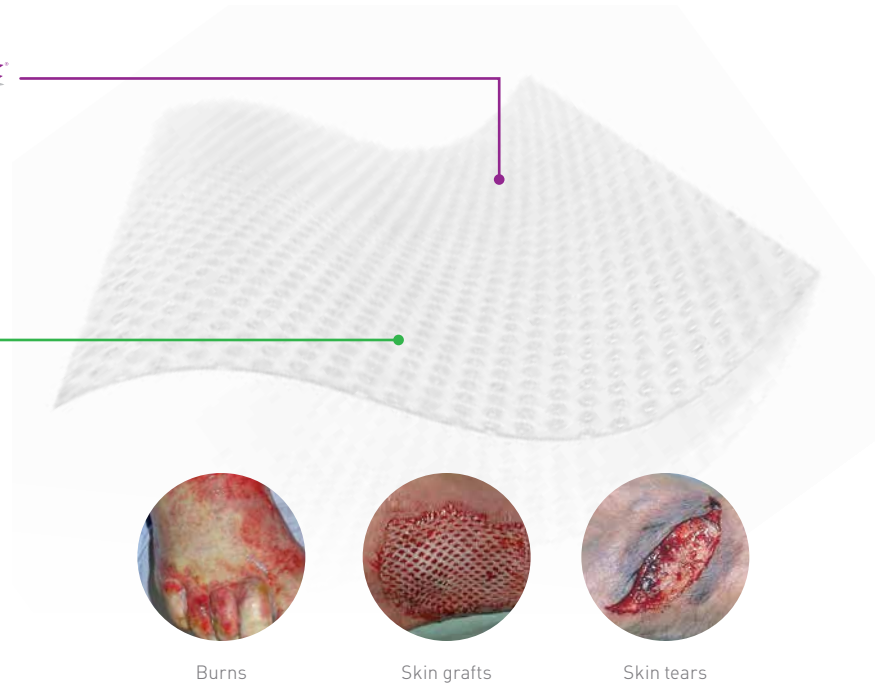
## The highly transparent wound contact layer (single sided)

### Safetac technology layer

- Reduces pain and trauma during dressing change<sup>1</sup>
- Does not adhere to the moist wound bed but to dry skin only
- Seals the wound margins and reduces risk of maceration<sup>2</sup>

### Polyurethane net

- Open mesh structure allows for transfer of exudate and application of topical treatment
- High transparency



## How Mepitel One works

Mepitel One may be left in place for up to 14 days, depending on the condition of the wound, which reduces the necessity for frequent primary dressing changes. The porous structure of Mepitel One allows exudate to pass into an outer absorbent dressing. The Safetac technology layer prevents the outer dressing from sticking to the wound and allows for atraumatic dressing changes.<sup>1</sup> The Safetac technology layer also seals around the wound edges, preventing the exudate from leaking onto the surrounding skin, thus minimizing the risk of maceration.<sup>2</sup>

## Benefits of Mepitel One

- Minimizes pain and trauma at dressing changes<sup>1</sup>
- Safetac technology layer on wound contact side only (one sided) for easy handling and application
- May remain in place for up to 14 days which allows cost effective and undisturbed wound healing
- Enables less frequent dressing changes
- Minimizes the risk of maceration<sup>2</sup>
- Leaves no residue and does not dry out
- Transparent for easy wound inspection during application and wear
- Conforms well to body contours, promoting patient comfort during wear
- Stays in place

## Areas of use

- Skin tears
- Surgical incisions
- Traumatic wounds
- Lacerations
- Radiation skin
- Partial and full thickness grafts
- Painful wounds
- Skin abrasions
- Partial thickness burns
- Blistering
- Leg and foot injury

It can also be used as protective layer on non-exuding wounds and on areas with fragile skin.

**Wear time:** Mepitel One may be left in place for up to 14 days depending on the condition of the wound and surrounding skin, or as indicated by accepted clinical practice (exudate should pass freely through the dressing and the holes should not be blocked). If saturated, the secondary absorbent dressing should be changed with the Mepitel One left in place.

## Mepitel One ordering information

Product Code	Size	Pcs/box	Pcs/case	HCPCS
289100	2" x 3" (5 x 7.5 cm)	10	70	A6206
289300	3" x 4" (7.5 x 10 cm)	10	40	A6206
289500	4" x 7" (10 x 18 cm)	10	70	A6207
289700	6.8" x 10" (17 x 25 cm)	5	40	A6208
289750	10.8" x 20" (27.5 x 50 cm)	2	14	A6208

References: 1. White R. et al. Evidence for atraumatic soft silicone wound dressing use. Wounds UK, 2005. 2. Wiberg A.B. et al. Preventing maceration with a soft silicone dressing: in-vitro evaluations. Poster presented at the 3rd Congress of the WUWHHS, Toronto, Canada, 2008.

## The transparent wound contact layer (double sided)

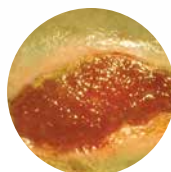
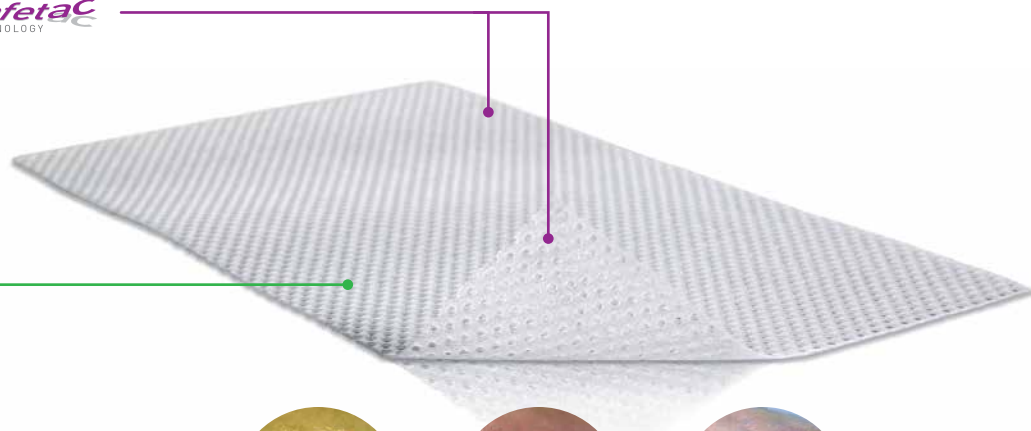
### Safetac technology layer



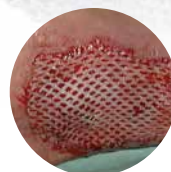
- Reduces pain and trauma during dressing change<sup>1</sup>
- Does not adhere to the moist wound bed but to dry skin only
- Seals the wound margins and reduces risk of maceration<sup>2</sup>

### Open mesh structure

- Allows transfer of exudate and application of topical treatment
- Transparent
- Allows topical applications to pass through



Primary wound protection



Skin grafts



Skin tears

## How Mepitel works

Mepitel may be left in place for up to 14 days, depending on the condition of the wound, which reduces the necessity for frequent primary dressing changes. The porous structure of Mepitel allows exudate to pass into an outer absorbent dressing. The Safetac technology layer prevents the outer dressing from sticking to the wound and allows for atraumatic dressing changes.<sup>1</sup> The Safetac technology layer also seals around the wound edges, preventing the exudate from leaking onto the surrounding skin, thus minimizing the risk of maceration.<sup>2</sup>

## Benefits of Mepitel

- Minimizes trauma and pain during dressing changes
- Prevents damage to newly formed delicate tissue upon removal<sup>1</sup>
- May remain in place for up to 14 days for cost effective undisturbed wound healing
- Enables less frequent dressing changes
- Minimizes the risk of maceration<sup>2</sup>
- Does not adhere to moist wound beds but to dry tissue only
- Transparent for easy wound inspection during application and during wear
- Conforms well to body contours, promoting patient comfort during wear

## Areas of use

- Skin tears
- Surgical incisions
- Venous and arterial injury
- Partial and full thickness grafts
- May be used under compression
- Use under Negative Pressure Wound Therapy (NPWT).
- Skin abrasions
- Partial thickness
- Lacerations
- Blistering
- Diabetic injury

**Wear time:** Mepitel may be left in place for up to 14 days depending on the condition of the wound and surrounding skin, or as indicated by accepted clinical practice (exudate should pass freely through the dressing and the pores should not be blocked).

If saturated, the secondary absorbent dressing pad should be changed with the Mepitel left in place.

## Mepitel® ordering information

Product Code	Size	Pcs/box	Pcs/case	HCPCS
290599	2" x 3" (5 x 7.5 cm)	10	50	A6206
290799	3" x 4" (7.5 x 10 cm)	10	40	A6206
291099	4" x 7" (10 x 18 cm)	10	70	A6207
292005	8" x 12" (20 x 30 cm)	5	30	A6208

References: 1. White R. et al. Evidence for atraumatic soft silicone wound dressing use. Wounds UK, 2005. 2. Wiberg A.B. et al. Preventing maceration with a soft silicone dressing: in-vitro evaluations. Poster presented at the 3rd Congress of the WUWHHS, Toronto, Canada, 2008.

# Mepitel® Ag

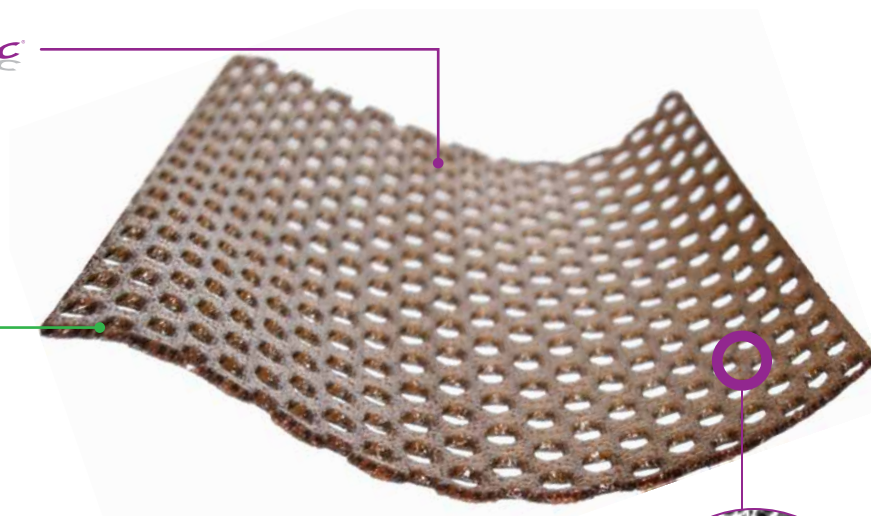
The highly conformable antimicrobial wound contact layer

## Safetac technology layer

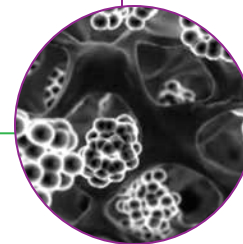


- Reduces pain and trauma during dressing change<sup>1</sup>
- Does not adhere to the moist wound bed but to dry skin only
- Seals the wound margins and reduces risk of maceration<sup>2</sup>

Soft and conformable



*Our technologically advanced process fuses silver sulphate with Safetac technology's unique base without losing the gentle effectiveness from Safetac technology and the antimicrobial properties of silver.*



## Benefits of Mepitel Ag

- Reduces pain and trauma at dressings changes.<sup>1</sup>
- Prevents damage to new formed delicate tissue upon removal<sup>1</sup>
- Stays securely in place without slippage.
- Can be left in place, while a secondary layer is changed as frequently as necessary.
- Inactivates a broad range of wound-related pathogens for up to 8 days.<sup>3</sup>
- Antimicrobial effect – even with a secondary layer.<sup>4</sup>

## Where to use Mepitel Ag

Mepitel Ag is intended for a wide range of exuding wounds such as skin tears and abrasions, sutured/surgical wounds, partial thickness burns, partial and full thickness grafts, lacerations, diabetic injury, venous and arterial injury.

**Wear time:** Mepitel Ag may be left in place for up to 8 days depending on the patient, condition of the wound and surrounding skin, or as indicated by accepted clinical practice (exudates should pass freely through the dressing and the holes should not be blocked).

If saturated, the secondary absorbent dressing could be changed with the Mepitel Ag left in place.

## Mepitel® Ag ordering information

Product Code	Size	Pcs/box	Pcs/case	HCPCS
390590	2" x 3" (5 x 7.5 cm)	10	50	A6206
390790	3" x 4" (7.5 x 10 cm)	10	40	A6206
390090	4" x 5" (10 x 12 cm)	10	60	A6207
391090	4" x 7" (10 x 18 cm)	10	70	A6207
392090	8" x 12" (20 x 30 cm)	5	30	A6208
392059	8" x 20" (20 x 50 cm)	2	12	A6208

**References:** 1. White R. et al. Evidence for atraumatic soft silicone wound dressing use. Wounds UK, 2005. 2. Wiberg A.B. et al. Preventing maceration with a soft silicone dressing: in-vitro evaluations. Poster presented at the 3rd Congress of the WUWHs, Toronto, Canada, 2008. 3. Savas & Hamberg Antimicrobial Effect of a New Silver-Containing, Soft Silicone Wound Contact Layer against Common Wound Pathogens in-vitro, Presented at SAWC Spring 2015. 4. Savas & Hamberg In-vitro Evaluation of the Antimicrobial effect of a new silver-containing wound contact layer in Combination with Secondary Dressings. Presented at SAWC Spring 2015

## The gelling fiber dressing

### High tensile strength<sup>3</sup>

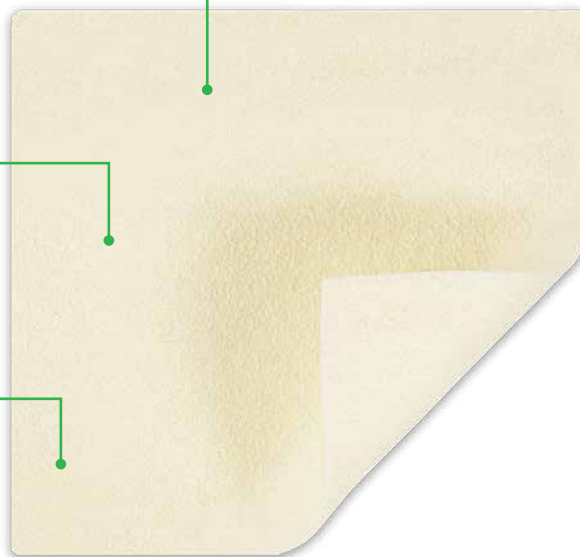
- Enables one-piece dressing removal<sup>2</sup>
- Reduces the risk of residue and fibers being left in the wound<sup>2</sup>

### High retention capacity<sup>1</sup>

- Absorbs and retains exudate, bacteria and blood<sup>2,4,5</sup>
- Reduces the risk of leakage onto surrounding skin<sup>2</sup>
- Reduces the risk of maceration<sup>2</sup>

### Hydrolock® Technology

- Highly absorbent, even under compression<sup>7</sup>
- Locks in fluid, minimizing risk of leakage and maceration<sup>1</sup>
- May be left in place for up to 7 days



## How Exufiber works

Exufiber is a sterile, nonwoven dressing made from highly absorbent polyvinyl alcohol fibres. In contact with wound exudate, Exufiber transforms into a gel that facilitates moist wound healing and ease of removal during dressing changes<sup>2</sup>. Exufiber is available both as a sheet and ribbon as dressings.

## Benefits of Exufiber

- High tensile strength to enable one-piece dressing removal<sup>2,3</sup>
- High retention capacity reduces the risk of leakage and maceration<sup>1,2</sup>
- Absorbs and retains exudate, blood and bacteria<sup>2,4,5</sup>
- Highly absorbent, even under compression therapy<sup>7</sup>
- May be left in place for up to 7 days

**Wear time:** Exufiber can be left in place for up to 7 days depending on wound condition or as indicated by clinical practice.

## Intended use

Exufiber is intended to be used on a wide range of exuding wounds:

- Pressure injury
- Leg and foot injury
- Partial thickness burns
- Surgical wounds
- Donor sites
- Chronic wounds

## Exufiber ordering information

Product Code	Size	Pcs/box	Pcs/case	HCPCS
709900	2" x 2" (5 x 5 cm)	10	40	A6196
709902	4" x 4.8" (10 x 12 cm)	10	60	A6197
709903	6" x 6" (15 x 15 cm)	10	60	A6197
709909	0.8" x 17.7" (2 x 45 cm)	5	25	A6196

# Exufiber® Ag+

## The antimicrobial gelling fiber dressing

### Sustained antimicrobial effect

- Kills a broad range of pathogens (in vitro)<sup>3</sup>
- May reduce odor
- Maintains antimicrobial efficacy for up to 7 days (in vitro)<sup>3</sup>

### High tensile strength<sup>2</sup>

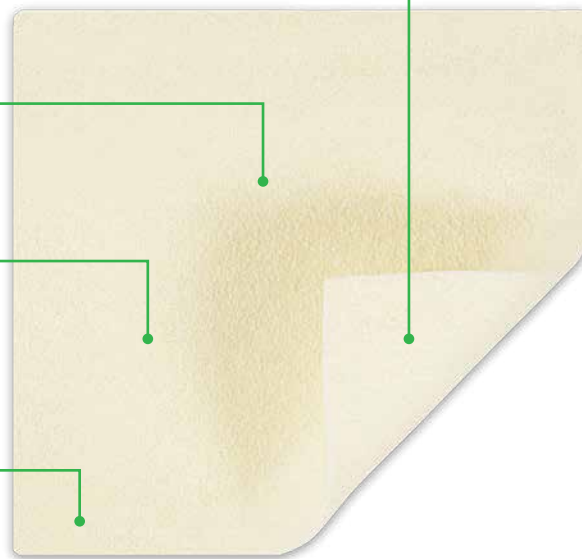
- Enables one-piece dressing removal
- Reduces the risk of residue and fibers being left in the wound

### High retention capacity<sup>1</sup>

- Absorbs and retains thick exudate and blood<sup>4,5</sup>
- Reduces the risk of leakage onto surrounding skin<sup>1</sup>
- Reduces the risk of maceration<sup>1</sup>

### Hydrolock® Technology

- Highly absorbent, even under compression<sup>6</sup>
- Locks in fluid, reducing risk of leakage and maceration<sup>1</sup>
- May be left in place for up to 7 days



## How Exufiber Ag+ works

In contact with wound exudate, Exufiber Ag+ transforms into a gel that facilitates moist wound healing and ease of removal during dressing change.<sup>2</sup> Exufiber Ag+ contains silver sulphate that is evenly distributed throughout the dressing. A rapid and sustained antimicrobial effect is initiated via contact with wound fluid.<sup>3</sup>

## Benefits of Exufiber Ag+

- High wet tensile strength to enable dressing removal in one piece<sup>2</sup>
- High retention capacity to reduce the risk of leakage and maceration<sup>1</sup>
- Absorbs and retains thick exudate and blood<sup>4,5</sup>
- Kills a broad range of pathogens including Vancomycin-resistant Enterococci (VRE) and MRSA (in vitro)<sup>3</sup>
- Highly absorbent, even under compression therapy<sup>6</sup>
- May be left in place for up to 7 days

**Wear time:** Exufiber Ag+ can be left in place for up to 7 days depending on wound condition or as indicated by clinical practice.

## Intended use

Exufiber Ag+ is intended to be used on a wide range of exuding wounds:

- Pressure injury
- Leg and foot injury
- Partial thickness burns
- Surgical wounds
- Donor sites
- Chronic wounds
- Oncology wounds

## Exufiber Ag+ ordering information

Product Code	Size	Pcs/box	Pcs/case	HCPCS
603421	2" x 2" (5 x 5 cm)	10	40	A6196
603422	4" x 4.8" (10 x 12 cm)	10	60	A6197
603423	6" x 6" (15 x 15 cm)	10	60	A6197
603424	8" x 12" (20 x 30 cm)	5	20	A6198
603420	0.8" x 17.7" (2 x 45 cm)	5	20	A6199



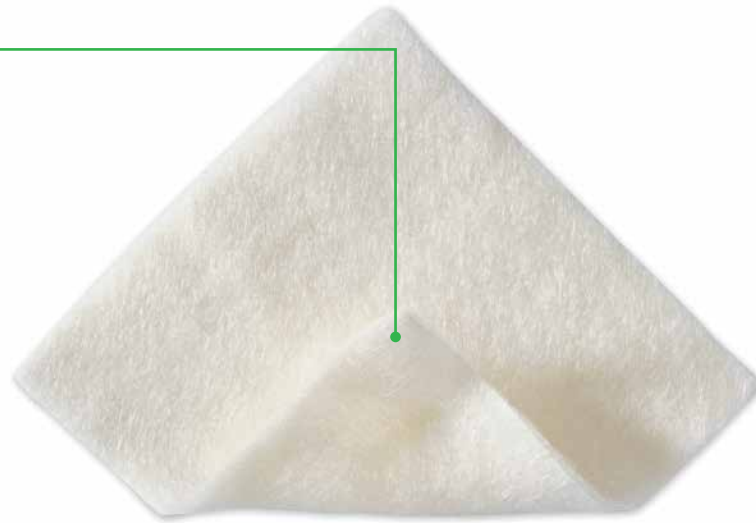
# Melgisorb® Plus

## The absorbent alginate dressing

### Hydrophilic alginate fibers

Soft sterile dressing made of Calcium Sodium Alginate fibers

- Excellent absorption - for high exuding wounds<sup>1</sup>
- High wet strength - to allow removal in one piece<sup>1</sup>
- High retention - to limit maceration<sup>1</sup>



### How Melgisorb Plus works

Melgisorb Plus absorbs large amounts of wound exudate. When absorbing, the alginate fibers become gel-like providing a moist environment conducive to wound healing. The dressing can easily be removed by irrigating with 0.9% normal saline.

### Benefits of Melgisorb Plus

- Highly absorbent<sup>1</sup>
- Does not adhere to the wound site when gelled
- Conformable
- Can be cut to shape

**Wear time:** Change Melgisorb Plus dressing when saturation is reached. Melgisorb Plus can be left in place for several days depending on wound condition or as indicated by clinical practice.

### Intended use

Melgisorb Plus is intended for a wide range of moderately to heavily exuding wounds, such as:

- Pressure injury
- Venous and arterial injury
- Diabetic injury
- Donor sites
- Post operative wounds
- Dermal lesions and other external wounds inflicted by trauma

### Melgisorb Plus ordering information

Product Code	Size	Pcs/box	Pcs/case	HCPCS
252000	2" x 2" (5 x 5 cm)	10	100	A6196
252200	4" x 4" (10 x 10 cm)	10	100	A6196
252500	4" x 8" (10 x 20 cm)	10	100	A6197
253500	1.25 x 17.7" (3 x 45 cm)	5	50	A6199

References: 1. Report Clinical Evaluation and Summary for UMT Alginate Wound Dressings Rev 2.

# Melgisorb® Ag

The antimicrobial hydrogel for debridement and desloughing

## Silver containing alginate

- Calcium alginate
- Carboxymethylcellulose (CMC)
- Ionic silver

## Alginate with CMC fibers

- Highly absorbent<sup>1</sup>
- High wet tensile strength<sup>1</sup>
- Absorbs and retains exudate with sustained antimicrobial efficacy<sup>2</sup>



## Benefits of Melgisorb Ag

- High fiber strength allows removal in one piece<sup>1</sup>
- Rapid and sustained antimicrobial effect<sup>2,3</sup>
- Sustained silver release up to 14 days<sup>2</sup>

## Areas of use

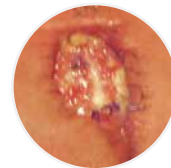
- Moderate to heavily exuding partial to full thickness wounds
- Surgical wounds
- Trauma injuries
- Leg injury
- Pressures injury
- Diabetic/neuropathic injury
- Graft and donor sites
- Under compression bandages
- Critically colonized wounds
- Partial thickness burns

**Wear time:** Dressing change frequency will depend on wound condition and the level of exudate. Initially it may be necessary to change the dressing every 24 hours.

Reapply Melgisorb Ag when the secondary dressing has reached its absorbent capacity or whenever good wound care practice dictates that the dressing should be changed.



Cavity wound



Post-op surgical wound



Sacral pressure ulcer

## Melgisorb Ag ordering information

Product Code	Size	Pcs/box	Pcs/case	HCPCS
255050	2" x 2" (5 x 5 cm)	10	100	A6196
255100	4" x 4" (10 x 10 cm)	10	100	A6196
255150	6" x 6" (15 x 15 cm)	10	100	A6197
255200	8" x 12" (20 x 30 cm)	5	50	A6198
255600	1.2" x 18" (3 x 44 cm)	10	100	A6199

# Normlgel® Ag

Antimicrobial silver wound gel



**For wounds with dry to moderate exudate**  
Provides a three day antimicrobial barrier and the moisture donating benefits of a hydrogel.<sup>1</sup>

## How Normlgel Ag works

Normlgel Ag is an antimicrobial hydrogel that is effective in assisting the debridement and desloughing process in dry necrotic wounds, while maintaining a moist wound environment for optimal wound healing. Normlgel Ag contains an antimicrobial silver compound that is an effective barrier to bacterial penetration by inhibiting the growth of broad spectrum of microorganisms.<sup>1</sup>

## Benefits of Normlgel Ag

- Adds moisture and maintains a moist wound environment
- Assists debridement and desloughing in dry and/or necrotic wounds
- Antimicrobial effect against relevant wound pathogens<sup>2</sup>
- Easy to use
- Easy to apply and stay in place

## Areas of use

Normlgel Ag is indicated under the medical supervision of a healthcare professional for the management of dry to moderate exuding partial and full thickness wounds such as:

- Diabetic injury
- Pressure injury
- Leg injury
- Graft and donor sites
- Post-operative surgical wounds
- Trauma wounds
- Superficial and partial thickness burns
- Abrasions and lacerations

**Wear time:** Normlgel Ag may be left in place for up to 3 days. Dressing changes may be required more frequently dependent upon wound conditions and levels of exudate.

## Normlgel Ag ordering information<sup>^</sup>

Product Code	Size	Pcs/box	Pcs/case	HCPCS
350450	1.5 oz (45gm)	10	30	A6248

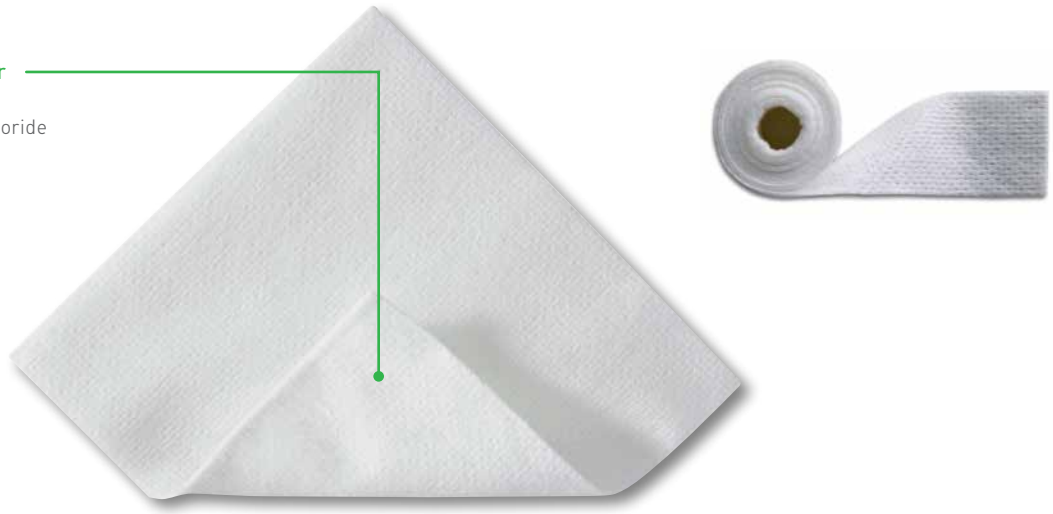
<sup>^</sup> Normlgel Ag is unsterile and packed in tubes

References: 1. Hamberg, K. "In-vitro evaluation of the antimicrobial effects of Normlgel Ag against common wound pathogens" Molnlycke Report. Aug 2011 2. Molnlycke Health Care Laboratory Report 2011-0830

## The sodium chloride wound cleansing dressing

### Absorbent viscose/polyester nonwoven

- Impregnated with sodium chloride



### How Mesalt works

The exudate from the wound releases the sodium chloride from the dressing. Mesalt stimulates the cleansing of heavily draining and discharging wounds in the inflammatory phase by absorbing exudate, bacteria and necrotic material from the wound, thereby facilitating the natural wound healing process.

### Benefits of Mesalt

- Absorbs exudate bacteria and necrotic material (slough)
- Stimulates the cleansing of wounds
- Easy application
- Latex free packaging

### Areas of use

- Heavily draining and discharging infected wounds in the inflammatory phase
- Cavity wounds
- Pressure injury
- Surgical wounds

**Wear time:** Mesalt should be changed when saturated (usually once a day in heavily exuding wounds), or according to good clinical practice. If the condition of the wound deteriorates, discontinue use and consult a healthcare professional.

### Mesalt ordering information

Product Code	Size	Pcs/box	Pcs/case	HCPCS
285580	4" x 4" (2" x 2" folded)	30	240	A6222
285780	6" x 6" (3" x 3" folded)	30	240	A6222
286080	8" x 8" (4" x 4" folded)	30	180	A6228
285280	3/4" x 39" Ribbon	10	80	A6226

## The absorbent composite dressing

### Backing film

- Moisture vapor permeable and breathable
- Maintains a moist environment
- Barrier to moisture and bacteria†

### Polyester nonwoven

- Gives stability at application

### Wound contact layer

- Low adherence to wound
- Allows exudate to pass into absorbent pad
- Integrated net for absorption and retention

### Absorbent pad

- Absorbs exudate

### Water-based adhesive

- Secure yet gentle fixation



## How Alldress works

The net is low-adherent and protects against fibers from the absorbent pad entering the wound. The absorbent pad absorbs excess exudate and minimizes the risk of maceration to the surrounding skin, and the gentle adhesive keeps the dressing securely in place. The nonwoven layer provides stability to the dressing structure for ease of application. The semi-permeable film maintains a moist wound environment, prevents wound fluids from passing through the dressing and protects both the wound and the environment from contamination. The smooth surface reduces the friction or potential disturbance of the dressing from bed linens and clothing.

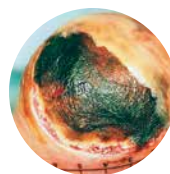
## Benefits of Alldress

- Low adherence to the wound
- Maintains a moist environment
- Minimizes the risk of maceration
- Moisture proof and bacteria proof film backing
- Protects against contamination of bed linens
- Smooth film backing reduces friction against clothing and linens

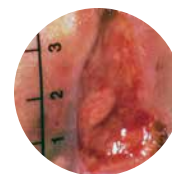
**Wear time:** Alldress may be left in place for several days depending on the wound/skin condition or as indicated by health care professionals.

## Areas of use

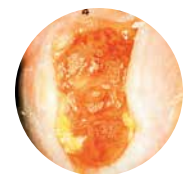
- Primary dressing for clean wounds and where a barrier to fluids and bacteria is required.
- Secondary dressing for open wounds.



Pressure ulcer



Cavity wound



Foot ulcer

## Alldress ordering information

Product Code	Size	Pcs/box	Pcs/case	HCPCS
265329	4" x 4" (10 x 10cm)/ 2" x 2" (5 x 5 cm)	10	70	A6203
265349	6" x 6" (15 x 15cm)/ 4" x 4" (10 x 10 cm)	10	100	A6203
265369	6" x 8" (15 x 20cm)/ 4" x 6" (10 x 15 cm)	10	120	A6204

† Microbes larger than 25 nm.



# Mextra® Superabsorbent

The superabsorbent dressing with a fluid-repellent backing film

## Fluid-repellent backing material

- Protects against fluid strike-through

## Distribution layer

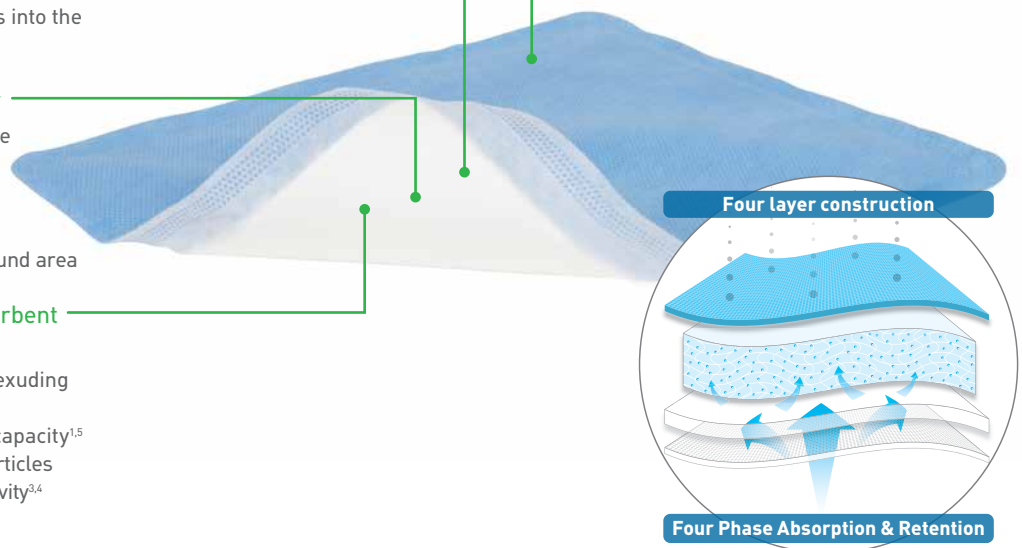
- Directs exudate evenly upwards into the absorbent layer

## Hydrophilic wound contact layer

- Transmits fluid upwards into the superabsorbent layer
- Retention and absorption properties may reduce risk of maceration and protect peri-wound area

## Absorbent layer with superabsorbent particles

- Manages moderately to highly exuding wounds
- High absorption and retention capacity<sup>1,5</sup>
- Polyacrylate superabsorbent particles have a protease modulating activity<sup>3,4</sup>



## Benefits of Mextra Superabsorbent

- Helps reduce the risk of leakage and maceration through absorption and retention properties<sup>1,6</sup>
- Can minimize the need for frequent dressing changes<sup>1,6</sup>
- May lead to reduced treatment costs<sup>1,6</sup>
- Maintains structure and integrity without becoming bulky upon exudate absorption
- Protects against fluid strike-through
- Promotes patient comfort<sup>7</sup>
- Has protease modulating properties<sup>3</sup> and provides a conducive environment for healing to proceed

## Areas of use

Mextra Superabsorbent is intended for use on moderately to highly exuding wounds. Mextra Superabsorbent absorbs wound exudate through the wound contact layer, retains the exudate within the core and thereby could reduce the risk of maceration. The fluid-repellent nonwoven backing acts as an exudate barrier and prevents exudate strike-through.

## Frequency of change

The wound and Mextra Superabsorbent should be inspected regularly. The dressing should be changed based on the condition of the wound or before the dressing has become saturated. Mextra Superabsorbent may be left on the wound for several days.

## Mextra Superabsorbent ordering information

Product Code	Size	Pcs/box	Pcs/case	HCPCS
610000	5" x 5" (12.5 x 12.5 cm)	10	50	A6196
610100	5" x 7" (12.5 x 17.5 cm)	10	40	A6197
610200	5" x 9" (12.5 x 22.5 cm)	10	90	A6197
610300	7" x 9" (17.5 x 22.5 cm)	10	40	A6197
610400	9" x 11" (22.5 x 27.5 cm)	10	40	A6198
610500	9" x 13" (22.5 x 32.5 cm)	10	40	A6198

**References:** 1. MHC data on file report no: LIMS 20161110-004 2. Mölnlycke Health Care Laboratory report no: PD-522474, 2016 (unpublished). 3. Wiegand, C., Hipler, U.C. In vitro evaluation of MMP binding capacity of a superabsorbent dressing and the reduction of collagenase activity. Poster presentation at European Wound Management Association conference, Copenhagen, Denmark, 2013. 4. Eming, S., Smola, H., Hartmann, B., Malchau, G., Wegner, R., Krieg, T., Smola-Hess, S. The inhibition of matrix metalloproteinase activity in chronic wounds by a polyacrylate superabsorbent. *Biomaterials* 2008; 29(19): 2932-2940 5. MHC data on file report no: PD-529849 6. Ferreras DT, Malcomb R, A 4-Layerd superabsorbent dressing versus the standard ABD pad in managing moderate to high exudate venous leg injury. Poster presented at Symposium on Advanced Wound Care Fall, Las Vegas Nevada, United States of America, 2016 7. MHC Survey report no: PD-522187

# Mepore® Pro

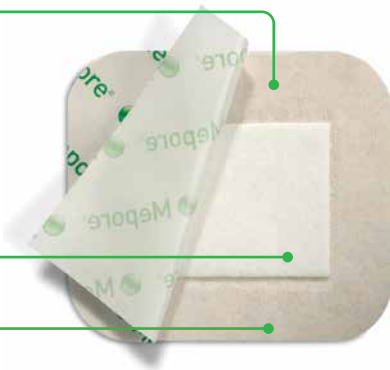
The showerproof, self adhesive absorbent dressing

## Backing film

- Soft, elastic, nonwoven polyester
- Barrier to moisture and bacteria†
- Breathable

## Absorbent wound pad

## Skin friendly adhesive



## How Mepore Pro works

The backing film allows showering and protects the wound from moisture and contamination. It also protects the clinician, clothing and bed linen from blood or exudate strike-through. Due to an absorbent pad and a high vapor permeability of the backing film, Mepore Pro offers good total fluid handling. The polyacrylate adhesive is designed to be gentle to the skin and at the same time provide secure fixation. The easy-to-remove protection paper permits aseptic application and simplifies dressing application.

## Benefits of Mepore Pro

- Skin friendly adhesive
- Low adherent wound contact layer minimizes risk of adherence to the wound
- Easy-to-remove protection paper allows for convenient and aseptic application
- Backing film provides barrier to moisture and bacteria
- Breathable film
- Low friction to clothing and bed linens
- Large sizes ideal for post-surgical use

## Mepore/Mepore Pro areas of use

- Wounds with low to moderate exudate
- Surgical wounds
- Minor burns
- Cuts
- Abrasions

**Wear time:** The frequency of dressing changes should be governed by the condition of the wound in accordance with accepted clinical practice.

## Mepore Pro ordering information†

Product Code	Size	Pcs/box	Pcs/case	HCPCS
670890	2.5" x 3" (6 x 7 cm)	60	480	A6203
670990	3.6" x 4" (9 x 10 cm)	40	320	A6203
671090	3.6" x 6" (9 x 15 cm)	40	320	A6203
671190	3.6" x 8" (9 x 20 cm)	30	180	A6203
671290	3.6" x 10" (9 x 25 cm)	30	180	A6203
671390	3.6" x 12" (9 x 30 cm)	30	270	A6203

† Microbes larger than 25 nm.

# Mepore®

The self-adhesive absorbent dressing

## Backing film

- Soft, elastic, nonwoven fabric backing with high breathability

## Absorbent wound pad

## Skin friendly adhesive



## How Mepore works

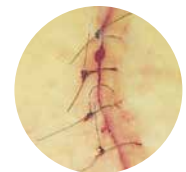
The porous structure of the nonwoven backing fabric ensures air and water vapor permeability, and it provides a barrier for blood and fluid strike-through. Mepore is flexible, conforms well to body contours and allows body movements when in place. The polyacrylate adhesive has been designed to be gentle to the skin but at the same time provide secure fixation. The low-adherent wound contact layer reduces the risk of adherence to the wound.

## Benefits of Mepore

- Skin friendly adhesive
- Low adherent wound contact layer minimizes risk of adherence to the wound
- Easy-to-remove protection paper allows for convenient and aseptic application
- Flexible fluid repellent backing



Fragile epithelializing wound



Surgical wound

## Mepore ordering information

Product Code	Size	Pcs/box	Pcs/case	HCPCS
670800	2.5" x 3" (6 x 7 cm)	60	480	—
670900	3.6" x 4" (9 x 10 cm)	50	400	—
671000	3.6" x 6" (9 x 15 cm)	50	400	—
671299	3.6" x 10" (9 x 25 cm)	30	180	—
671300	3.6" x 12" (9 x 30 cm)	30	270	—
671400	3.6" x 14" (9 x 35 cm)	30	180	—

# Mepore® Film

The self-adhesive breathable, transparent film dressing

## Framed delivery system

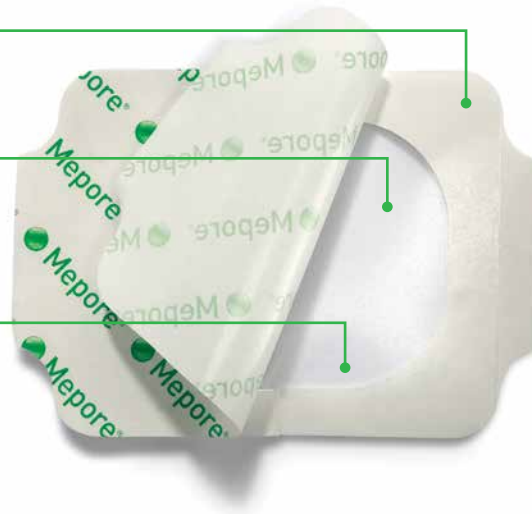
- Easy application

## Polyacrylic adhesive

- Skin friendly adhesive
- Secure fixation

## Polyurethane film

- Breathable and elastic
- Transparent
- Barrier to moisture and bacteria†



## How Mepore Film works

Mepore Film maintains a moist environment in the wound and due to its high vapor permeability, allows excess moisture to pass away from the wound and surrounding skin.

## Benefits of Mepore Film

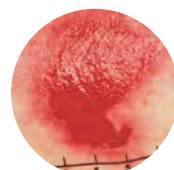
- High breathability
- Easy application
- Conforms easily to body contours
- Skin friendly adhesive
- Maintains a moist environment
- Protects wound surface
- Barrier to moisture and bacteria†
- Protects skin from friction injuries

**Wear time:** The dressing may be left in place for several days depending on the wound/skin condition or as indicated by good clinical practice.

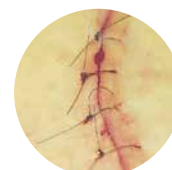
## Areas of use

Mepore Film is designed for a wide range of clean wounds in the granulation phase such as:

- Superficial burns
- Abrasions
- Donor sites
- Closed surgical wounds
- As a secondary dressing
- IV sites
- Lacerations
- Superficial pressure injury
- Prevention of skin breakdown



Fragile epithelializing wound



Surgical wound

## Mepore Film ordering information

Product Code	Size	Pcs/box	Pcs/case	HCPCS
270600	2.4" x 2.6" (6 x 7 cm)	100	600	A6257
271500	4" x 5" (10 x 12.7 cm)	70	210	A6258
272500	4" x 10" (10 x 25 cm)	20	100	A6258
273000	6" x 8.5" (15 x 21.5 cm)	10	50	A6258

† Microbes larger than 25 nm.

# Mepiform®

The self-adherent silicone gel sheeting for scar management

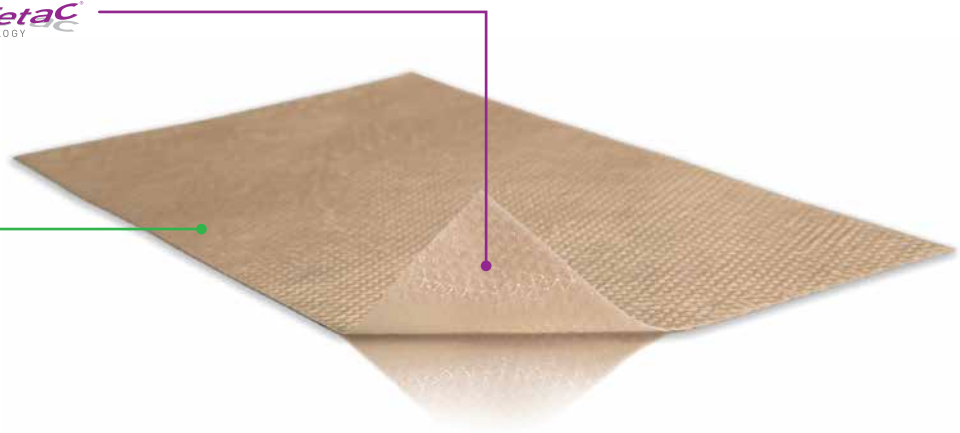
## Safetac technology layer



- Atraumatic to skin on removal<sup>1</sup>
- Adheres gently yet securely to skin

## Nonwoven backing film

- Breathable
- Moisture proof



## How Mepiform works

Topical silicone empirically has been shown to have a positive impact on hypertrophic and keloid scars.<sup>2</sup> Mepiform should optimally be worn 24 hours a day. It is recommended that Mepiform is removed once a day (e.g., when showering or bathing) for inspection and washing of the skin.

For prophylactic treatment, Mepiform should be used for 2–6 months depending on the condition of the scar.

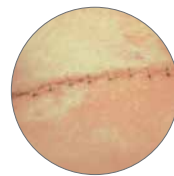
## Benefits of Mepiform

- Conforms well to body contours
- No extra fixation is needed
- May be cut to size
- Thin, flexible and discreet
- May be worn in daily activities
- May be re-applied
- May be used for several days

**Wear time:** Mepiform should optimally be worn for 24 hours a day. Remove the dressing once per day for inspection and washing of the skin. The dressing can then be reapplied. Mepiform should under normal conditions be changed every 3 - 7 days or when the adherent properties of the dressing are no longer sufficient.

## Areas of use

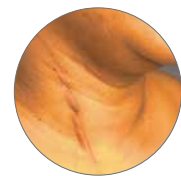
- Old and new hypertrophic and keloid scars
- Closed wounds which may prevent the formation of hypertrophic and keloid scars



Closed surgical wounds



Keloids



Hypertrophic scars

## Mepiform® ordering information

Product Code	Size	Pcs/box	Pcs/case
293199	1.6" x 12" (4 x 30 cm)	5	50
293299	2" x 3" (5 x 7.5 cm)	5	25
293499	4" x 7" (10 x 18 cm)	5	35

References: 1. White R. et al. Evidence for atraumatic soft silicone wound dressing use. Wounds UK, 2005. 2. Carney S.A, Cason C.G, Gowar J.P. "Cira-Care gel sheeting in the management of hypertrophic scarring." The British Library 1994.

## The self-adherent conformable fixation tape

### Safetac technology layer

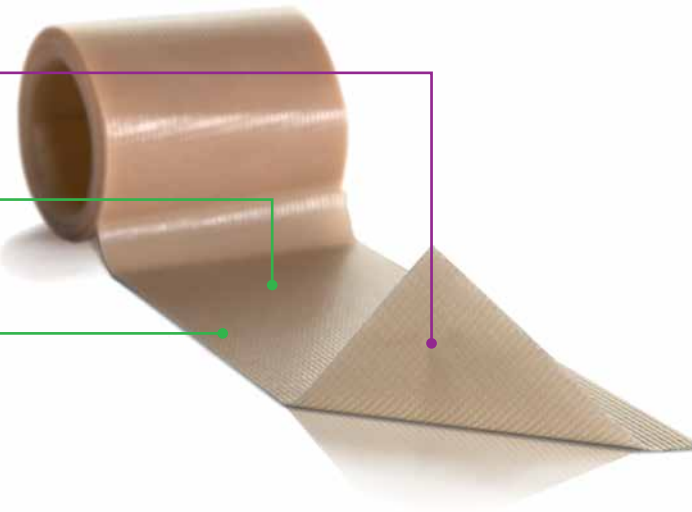
- Reduces pain and trauma upon removal!

### Polyurethane backing film

- Breathable
- Moisture proof

### Knitted fabric

- Conformable
- Easy to cut



## How Mepitac works

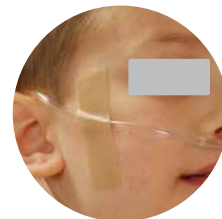
Mepitac is highly conformable and easy to apply and remove. The Safetac technology layer allows secure fixation and atraumatic removal from skin and hair.<sup>1</sup> If inspection or repositioning is necessary, Mepitac can be lifted and re-applied. It is an ideal fixation solution for patients with fragile and sensitive skin or with allergies to traditional adhesives. Mepitac is suitable for patients requiring repeated application and removal of tape over the same area (e.g., neonates and dialysis patients).

## Benefits of Mepitac

- Atraumatic to the skin on removal!
- Conforms well to body contours
- Leaves no residue
- Moisture proof film backing
- Breathable
- May be repositioned

## Areas of use

- Fixation of medical devices such as drains, tubes, probes, electrodes, IV cannulae, and dressings
- Skin protection when used under devices (e.g., tubes).
- May be repositioned



## Mepitac ordering information

Product Code	Size	Rolls/box	HCPCS
298300	3/4" x 118" (2 x 300 cm)	12	A4452
298400	1.5" x 59" (4 x 150 cm)	12	A4452



## The self-adhesive fabric tape

### Nonwoven Polyester Fabric Backing

- Soft and elastic
- Non-absorbent

### Protection Paper

- Easy-to-remove
- Premeasured
- Perforated split

### Polyacrylate Adhesive

- Skin friendly
- Water based
- Solvent free



### How Mefix works

The porous structure of the nonwoven fabric ensures air and water vapor permeability. Mefix is stretchable, conforms well to body contours and allows body movements when in place. The fabric is non-absorbent and provides a barrier to blood and fluid. The polyacrylate adhesive has been designed to be gentle to the skin but at the same time provide secure fixation.

The easy-to-remove protection paper is pre-measured in 4 inch intervals and has a perforated split for easy removal and application. Mefix may be easily cut to the desired shape and size.

### Benefits of Mefix

- Skin friendly adhesive
- Provides secure fixation
- Stretchable, conformable fabric backing provides barrier to blood and fluid
- Pre-measured release paper allows for convenient measurement/cutting
- May be applied over flexing areas such as neck, elbows, knees
- Air permeable
- Easy-to-remove backing paper with perforated split

### Areas of use

- Fixation of dressings, catheters and cannulae

### Mefix ordering information<sup>^</sup>

Product Code	Size	Pcs/box	Pcs/case	HCPCS
310299 <sup>‡</sup>	1" x 11 yds (2.5 cm x 10 m)	1	40	A4450
310599	2" x 11 yds (5 cm x 10 m)	1	40	A4450
311099	4" x 11 yds (10 cm x 10 m)	1	20	A4450
311599	6" x 11 yds (15 cm x 10 m)	1	22	A4450
312000	8" x 11 yds (20 cm x 10 m)	1	10	—

<sup>^</sup> Packaged in boxes containing individual, non-sterile rolls.

<sup>‡</sup> This size does not have a perforated split in the protection paper



### How Setopress works

Setopress is a lightweight high compression bandage. To ensure correct application, a simple visual guide is permanently printed on the bandage. The visual guide consists of color rectangles which become squares when the correct extension is reached. Extending the BROWN rectangles to squares provides 40mmHg at the ankle. Extending the GREEN rectangles to squares provides 30mmHg at the ankle.

If a patient is not accustomed to compression therapy or finds it difficult to comply, moderate compression may be used initially. When applied correctly, Setopress high compression bandages produce a level of compression that has been shown to heal even long-standing leg injury within 12 weeks.<sup>1</sup>

The visual application guide makes it easy to apply Setopress consistently and correctly.

### Benefits of Setopress

- Provides effective high compression<sup>2</sup>
- Allows for 2 different levels of compression
- Easy-to-use application technique
- Long enough for even the largest limbs
- Thin enough to be worn with shoes to encourage mobility
- Washable for repeated use

### Areas of use

Setopress high compression bandages are used in the treatment of venous leg injury and associated conditions requiring graduated compression of the leg.

### Material properties

- Polyamide
- Elastane
- Cotton
- Does not contain natural rubber latex

### Setopress ordering information\*\*

Product Code	Size	Roll	Box/tray	HCPCS
3505	4" x 138" (10cm x 3.5m)	1	12	A6452

\*\* Individually packed in cartons of 12

#### Precautions

- DO NOT apply Setopress® if arterial insufficiency is present or suspected
- DO NOT use the figure-of-eight bandaging technique
- DO NOT use on limbs with a circumference of less than 7" (18 cm)

References: 1. Blair et al, Sustained Compression and Healing of Chronic Venous Injury, *BMJ* 1988 297; 1159-64  
2. Gould DJ, Cambell S, Newton H, et al, Setopress vs. Elastocrepe in Chronic Venous Ulceration. *British Journal of Nursing* 1998, 7(2): 66-70, 72-73

# Tubifast® 2-Way Stretch™

The lightweight, tubular retention dressing



Tubular bandage does not require pins or tape

Quick and easy to use: cut to size and stretch over the dressing for an even, non-constricting fit

Quick and easy to apply

Decreased fraying, so there is less risk of fibers in the wound<sup>2</sup>

The roll design ensures cost-effective use by minimizing waste

Available in 5 color-coded widths, Tubifast 2-Way Stretch has been designed to fit snugly over all limbs, no matter what the shape or size

Tubifast 2-Way Stretch's radial and longitudinal elasticity allows patients complete freedom of movement, with added comfort<sup>1</sup>

## How Tubifast works

Tubifast 2-Way Stretch is manufactured from viscose with very fine elastane threads knitted into the fabric radially and longitudinally to provide light elasticity.

The Tubifast® bandage holds dressings securely, without constriction or compression.

Each size is identified by a colored line knitted into the bandage. It's quick and easy to use: cut to size and stretch over the dressing for an even, non-constricting fit.

## Benefits of Tubifast

- Tubifast bandages holds dressings securely, without constriction or compression
- The light elasticity promotes freedom of movement
- Tubular presentation—no requirement for pins or tape
- Color coding for quick reference
- Wide range of sizes to fit everything from small limbs to large adult trunks
- Quick and easy to use
- Radial and longitudinal elasticity allows patients complete freedom of movement, with added comfort<sup>1</sup>

## Areas of use

Tubifast® may be used for dressing retention and skin covering for any part of the body. It can also be used for patch wrapping and as an undercast stockinette.

Use as secondary dressing over other Mölnlycke dressings such as Mepilex®, Mepilex Ag, Mepilex Lite, Mepitel®, Mepilex Transfer, and Mepilex Heel.

## Material properties

- Viscose, Elastane and Polyamide
- Not made with natural rubber latex

## Tubifast 2-way Stretch ordering information

Product Code	Line	Product	Limb size	Width*
2434	RED	Small Limbs	3.5" - 7.1" (9 - 18 cm)	1.5" (3.5 cm)
2436	GREEN	Small and medium limbs	5.5" - 9.5" (14 - 24 cm)	2" (5 cm)
2438	BLUE	Large limbs	9.5" - 15.8" (24 - 40 cm)	3" (7.5 cm)
2440	YELLOW	Extra-large limbs, heads, children's trunks	13.8" - 25.2" (35 - 64 cm)	4.5" (10.75 cm)
2444	PURPLE	Large adult trunks	25.2" - 51.2" (64 - 130 cm)	8" (20 cm)

\* Length for all Tubifast® 2-way stretch is 10 m.

References: 1. Published data shows that Tubifast® 2-Way Stretch exceeds the minimum requirement of longitudinal stretch for the actions of sitting, bending and flexing. Physical testing of textiles, B. P. Saville, Woodhead Publishing, 1999. 2. Data on file.

# Tubifast® Garments

Ready to wear garments



## How Tubifast Garments works

Ready-made Tubifast Garments are designed for dressing retention and wet or dry wrapping. They are available in full-sleeved vests, tights, leggings, socks, and gloves for children six months and older. Gloves also comes in adult sizes.

Tubifast Garments do not require tapes, pins or ties and are quick and easy to apply. The two-way stretch construction ensures complete freedom of movement, and the flat seams help prevent irritation to sensitive skin. Tubifast Garments are comfortable to wear at night and under ordinary clothes, promoting active days and restful nights. They are also washable for continued use.

## Benefits of Tubifast Garments

- Flat seams help prevent irritation to sensitive skin
- Convenient, quick and simple application
- Comfortable to wear under regular clothes or at night
- Allow for freedom of movement
- Available in full-sleeved vests, tights, leggings, socks, and gloves
- Smaller sizes incorporate fun characters

## Areas of use

Tubifast Garments may be used as dressing retention in the management of Epidermolysis Bullosa (EB) and wet or dry wrapping therapy used in the management of atopic eczema.

Use as secondary dressing over other Mölnlycke® dressings such as Mepilex®, Mepilex Ag, Mepilex Lite, Mepitel®, Mepilex Transfer, and Mepilex Heel.

## Material properties

- Viscose, Elastane and Polyamide
- Not made with natural rubber latex

## Recommended Fitting Sizes:

	Vests, Tights		Vests, Leggings		
	6-24 months	2 - 5 years	5 - 8 years	8 - 11 years	11 - 14 years
Height	74 - 86 cm	86-110 cm	110 - 128 cm	128 - 146 cm	146 - 164 cm
Inside Leg	28 - 34 cm	34 - 47 cm	47 - 58 cm	58 - 68 cm	68 - 77 cm
Arm Length	25 - 29.5 cm	29.5 - 35.5 cm	35.5 - 42 cm	42 - 49 cm	49 - 57.5 cm

Socks - One size fits all 2 - 14 years

## Tubifast Garments ordering information

Product Code	Description	Age/Size
992007	Vest	6-24 months
992008	Vest	2-5 years
992009	Vest	5-8 years
992010	Vest	8-11 years
992011	Vest	11-14 years
992012	Tights	6-24 months
992013	Leggings	2-5 years
992014	Leggings	5-8 years
992015	Leggings	8-11 years
992016	Leggings	11-14 years
992017	Socks	One size fits all 2-14 yrs
5922	Gloves	Extra Small Child
5923	Gloves	Small Child
5921	Gloves	Med/Lg Child - Sm/Med Adult
5920	Gloves	Medium/Large Adult

# Tubigrip®

The multi-purpose elasticated tubular support bandage



## Areas of use

Tubigrip provides firm support for sprains, strains and swelling.

## How Tubigrip works

Tubigrip is a multi-purpose tubular support bandage that provides firm support in the management of sprains, strains and swelling. Product application is easy to use as it can be easily applied and reapplied.

Tubigrip's elasticated tubular construction stays securely in position without pins or tapes. Tubigrip can easily be reapplied after washing, without loss of effect.

Tubigrip 10m helps reduce waste, as only the exact amount required is cut from the roll.

Tubigrip 10m is available in two shades – natural and beige.

## Benefits of Tubigrip

- Provides firm support
- Easy to apply and reapply
- Full range of sizes to suit most applications
- No pins or tapes needed
- Washable and reusable
- Choice of two colors (10m only)

## Material properties

Cotton, elastodiene and polyester

## Tubigrip ordering information

		Product Code			HCPCS
		Natural		Beige	
Shade		Natural		Beige	
Size		3.28' (1m)	32.81' (10m)	32.81' (10m)	
<b>A</b>	Infant feet and arms	-	1435	-	A6457
<b>B</b>	Small hands and arms	1520	1436	1449	A6457
<b>C</b>	Medium arms, small ankles	1521	1443	1450	A6457
<b>D</b>	Large arms, medium ankles, small knees	1522	1437	1451	A6457
<b>E</b>	Large ankles, medium knees, small thighs	1528	1434	1448	A6457
<b>F</b>	Large knees, medium thighs	1523	1438	1452	A6457
<b>G</b>	Large thighs	-	1439	1453	A6457
<b>J</b>	Small trunks	-	1440	-	A6457
<b>K</b>	Small/Medium trunks	-	1441	-	A6457
<b>L</b>	Large trunks	-	1442	-	A6457



# Dermafit

The multi-purpose elasticated tubular bandage with no natural rubber latex



## Areas of use

Dermafit provides support in the management of strains, sprain and swelling.

## How Dermafit works

Dermafit is a multi-purpose tubular support bandage that provides support in the management of sprains, strains and swelling. Product application is quick and easy to use as it can be easily applied and reapplied.

Dermafit stays securely in position without pins or tapes, unlike conventional bandages. Dermafit can easily be reapplied after washing, without loss of effect.

## Material properties

Cotton, elastic

## Benefits of Dermafit

- Easy to apply and reapply
- Full range of sizes to suit most applications
- No pins or tapes needed
- Cold-water washable and reusable
- 10m roll reduces waste
- Not made with natural rubber latex

## Dermafit ordering information

Size	Description	Product Code for 10m roll (32.81')
A*	Infant feet and arms	131935
B	Small hands and limbs	131936
C	Adult hands and limbs	131943
D	Large arms and legs	131937
E	Legs and small thighs	131934
F	Large knees and thighs	131938
G	Large thighs	131939
J	Small trunks	131940
K	Medium trunks	131941
L*	Large trunks	131942

# Mölnlycke® Z-Flo™ Fluidized Positioner

The fluidized positioner for adult and pediatric use

## Fluidized positioner

- Mold to conform
- Maintains its shape
- Accommodates medical devices

## Adaptable and effective

- Protect at-risk anatomical sites
- Increases surface area to redistribute pressure



## How Mölnlycke Z-Flo Fluidized positioners works

Mölnlycke Z-Flo fluidized positioners offer the ability to uniquely conform to and support the patient's body in a comfortable position until time to reposition again. The non-powered positioners use a unique fluidized medium that isn't predisposed to a particular shape. Mölnlycke Z-Flo Fluidized positioners are used to offload bony prominences while maintaining neutral body alignment. Mölnlycke Z-Flo Fluidized positioners are designed to remain with the patient across the care continuum.<sup>1</sup>

## Benefits of Mölnlycke Z-Flo Fluidized positioner

- Won't flatten and heat up like rolled towels and blankets
- Doesn't shift, lose shape or retain moisture like foam rings and wedges
- Offers a selection of sizes
- Promotes neutral head and neck alignment
- Minimizes the harmful effects of friction, shear forces and abnormal interface pressure on the patient<sup>1</sup>
- For single patient use only

## Areas of use

- Head, ears and scapula – offloading while supporting the cervical spine
- Shoulders, back and hips – turning in the side-lying position
- Heels – Offloading or floating in supine position
- Knees and ankles – provide support when side-lying
- Upper extremities – elevate for comfort or offload bony prominence
- Use to redistribute pressure across any bony prominence during prone position



Offload the occiput by supporting the neck and shoulders



Can be molded to support any degree of turn



Offload the heels by conforming to and cradling the calves, floating heels off the bed surface

References: 1. Brennan M and Lacontti, D. Using Conformational Positioning to Reduce Hospital-Acquired Pressure Injury. Journal of Nursing Quality, 2013

## Ordering Information

Mölnlycke®

### Z-Flo™ Fluidized Positioner

Adult

Product Code	Description	Dimensions	Pcs/ case	HCPC Code
1400600	Ancillary Positioner - Small with 2 tabs	21" x 19"	1	E0190
1400601	Ancillary Positioner - Standard with 2 tabs	26" x 24"	1	E0190
1401001	Utility Positioner - Small with tab and cover	11" x 22"	1	E0190
1401003	Utility Positioner - Medium with tab	16" x 30"	1	E0190
1401005	Utility Positioner - Large	25" x 36"	1	E0190
1401007	Utility Positioner	12" x 20"	8	E0190
1401008	Utility Positioner with thermal regulating cover	12" x 20"	8	E0190
1401011	Utility Positioner - Medium	16" x 30"	1	E0190
1400902	Utility Positioner Kit- 1 utility positioner (12x20) and 1 medium utility positioner (16x30)		1	—

## Fluidized Positioners

### Covers and Disposable Covers

Product Code	Description	Dimensions	Pcs/ case
1400234	Covers - Small, Square	7" x 7"	50
1400228	Covers - Small	7" x 10"	50
1400240	Covers - Medium	9" x 15"	50
1400201	Covers - Large	12" x 20"	50
1400207	Covers - Medium, Full body	16" x 24"	50
1400215	Covers - Large, Full body	20" x 30"	50
1400225	Covers - Large Tube	60" x 6.5"	50
1400218	Straps	20"	50
1400229	Disposable Covers - Small	7" x 10"	50
1400241	Disposable Covers - Medium	9" x 15"	50
1400202	Disposable Covers - Large	12" x 20"	50
1400208	Disposable Covers - Medium, Full Body	16" x 24"	50
1400216	Disposable Covers - Large, Full Body	20" x 30"	50

# Mölnlycke® Z-Flo™ Fluidized Positioner

The fluidized positioner for neonatal use

## Fluidized positioner

- Mold to conform
- Maintains its shape



## Adaptable and effective

- Tube used for boundaries
- Utility positioner under baby



## How Mölnlycke® Z-Flo™ Fluidized positioners works

Mölnlycke® Z-Flo™ Fluidized neonatal positioners are specially designed to comfort, support and help premature and ill infants continue normal development with containment in an individually molded nest. The infinitely adjustable neonatal positioners assist the caregivers in meeting the unique positioning needs of NICU infants with a wide variety of medical conditions and equipment. The fluidized medium offers the therapeutic support and contouring to help facilitate the optimal positioning of the neonate.

## Benefits of Mölnlycke® Z-Flo™ Fluidized positioner

- Minimizes the harmful effects of friction, shear forces and abnormal interface pressure on the baby<sup>2</sup>
- Helps caregiver change the infant's position with minimal disturbance to the patient
- Conformational fluidized positioner provides better sleep efficiency<sup>1</sup>
- Offers a selection of sizes and kits
- Won't flatten and heat up like rolled towels and blankets
- Doesn't shift, lose shape or retain moisture like foam rings and wedges

Reference: 1. Visscher, M., Lacina, L., Casper, T. et al. Conformational Positioning Improves Sleep in Premature Infants with Feeding Difficulties. The Journal of Pediatrics, 2014. www.jpeds.com  
2. Brennan M and Laconti, D. Using Conformational Positioning to Reduce Hospital-Acquired Pressure Injury. Journal of Nursing Quality, 2013

## Ordering Information

### Mölnlycke®

#### Z-Flo™ Fluidized Positioner

Neonatal and Pediatric: Full Body

Product Code	Description	Dimensions	Pcs/ case	HCPC Code
1400206	Full Body - Medium with cover	16" x 24"	6	E0190
1400213	Large Full Body - Large with cover	20" x 30"	4	-

### Mölnlycke®

#### Z-Flo™ Fluidized Positioner

Neonatal and Pediatric: Positioning Kits

Product Code	Description	Pcs/ case
1400300	Large Tube Combo - 1 Large Tube (60"x6.5"), 1 Medium Utility (9"x15"), 2 covers and 2 straps (20")	6
1400304	Medium Full Body Kit - 1 Medium Full Body (16"x24"), 1 Small Utility (7"x10"), 2 covers and 2 straps (20")	6
1400307	2 Positioners Kit - Large Full Body (20"x30"), 1 Small Utility (7"x10"), 2 covers and 2 straps (20")	4
1400308	Large Full Body Kit - 1 Large Full Body (20"x30"), 1 Medium Utility (9"x15"), 2 covers and 2 straps (20")	4

### Mölnlycke®

#### Z-Flo™ Fluidized Positioner

Pediatric Care Units

Product Code	Description	Pcs/ case
1400401	1 Large Utility (12"x20"), 1 Medium Utility (9"x15"), 2 Small Utility (7"x10"), 3 Covers and 2 straps (20")	6
1400403	2 Large Utility (12"x20"), 1 Medium Utility (9"x15"), 3 Covers and 4 straps (20")	6

### Mölnlycke®

#### Z-Flo™ Fluidized Positioner

Neonatal & Pediatric: Utility, tube and specialty products

Product Code	Description	Dimensions	Pcs/ case	HCPC Code
1400233	Square Utility Positioner - Small with cover	7" x 7"	18	-
1400227	Utility Positioner - Small with cover	7" x 10"	12	-
1400239	Utility Positioner - Medium with cover	9" x 15"	6	-
1400200	Utility Positioner - Large with cover	12" x 20"	6	E0190
1400222	Small Tube with 3 disposable covers (Case of 6 positioners w/ 18 disposable covers)	30" x 6.5"	6	-
1400224	Large Tube with cover	60" x 6.5"	6	-



# Mölnlycke® Tortoise® Turning & Positioning System

Fluidized positioning and positive air displacement

## Tortoise Pad

- Constructed with rip-stop nylon material, reinforced handles for turning, positioning and boosting

## Fluidized positioner

- Molds to conform
- Maintains its shape
- Accommodates medical devices

## Sacrum image

Helps guide caregivers on the optimal position to ensure patient envelopment.

## White handles

To facilitate boosting the patient.

## Tuck the tail

For greater envelopment and to maintain the patient's position. Marked in red.

## Easy infographic instructions

Printed directly on the mat.

## Grey and black handles

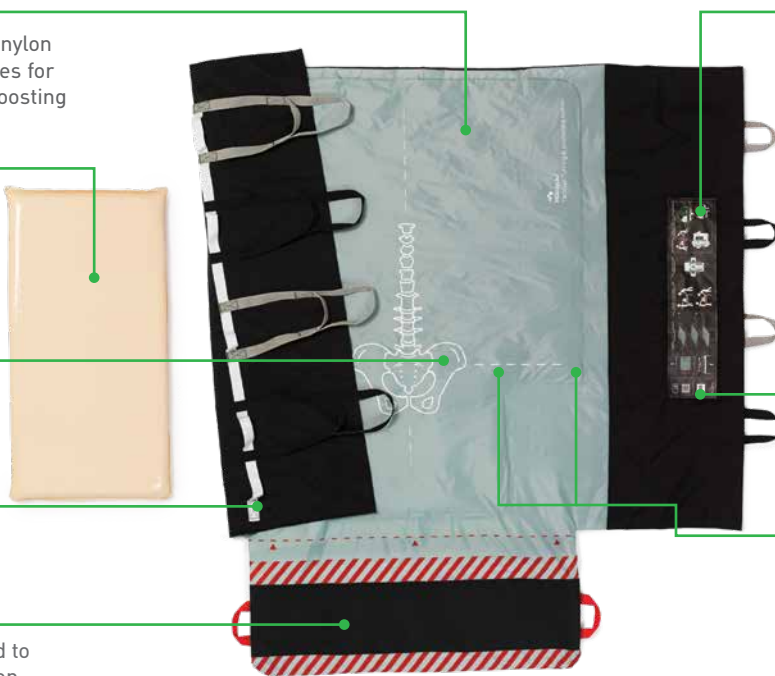
Ergonomically designed for use in turning the patient or making lateral transfers.

## QR-code

Directs to the instructional videos.

## Lateral Sacrum line

Guidance for aligning patients and tortoise in bed.



## How the Mölnlycke Tortoise Turning & Positioning System works

The Mölnlycke® Tortoise™ Turning & Positioning System is a unique and simple non-powered system for positioning and offloading that is easy to use, safe for both patients and caregivers, and effective in offloading bony prominences.<sup>1</sup> The low pressure air chamber adjusts to the patient's body, evenly redistributing the pressure to offload the sacrum and greater trochanter.<sup>2</sup> The characteristics of the Mölnlycke® Tortoise™ Turning & Positioning System, which includes a low-friction mat with reinforced handles to provide an ergonomic grip, allows caregivers to easily turn and reposition the patient to the desired angle. Less strain on caregivers' necks and backs should help reduce the occurrence of back injuries among nurses and hospital staff.<sup>3</sup>

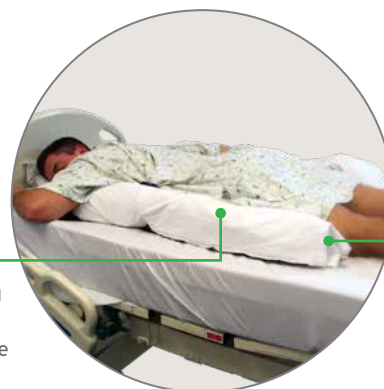
Available in a Bariatric size to accommodate Bariatric sized beds. Tortoise Turning and Positioning system can also be used for lateral transfer of patients weighing up to 880 lbs.

## Benefits of the Mölnlycke Tortoise Turning & Positioning System

- Safe, secure patient moving and maintainable repositioning to protect at-risk anatomical sites<sup>1</sup>
- Less effort required to effectively turn and reposition patients<sup>1</sup>
- Low profile air chamber adapts to the patient by positive air displacement<sup>2</sup>
- Designed to greatly increase patient's comfort
- For single patient use only

## Tortoise™ Prone® Turning & Positioning System

In addition to the Tortoise™ Turning & Positioning System, the Tortoise Prone® will safely and simply rotate your patient from supine to prone position. It will also allow the degree of micro-turn to be controlled in accommodating the needs of hemodynamically unstable patients.



## Fluidized positioner

- Uniquely conforms to and supports the patient's body
- Adaptable to multiple anatomical sites
- Won't flatten and heat up like rolled towels and blankets
- Doesn't shift, lose shape or retain moisture like foam rings and wedges

Reference: 1. Trevellini, A. Chenel. Connecting the dots: pressure ulcer prevention and safe patient handling. Poster presentation 2. Elling, R. Use of a positive air displacement safe patient handling system to reduce facility acquired pressure injury. Poster presentation. 3. Kass, J. Economic Impact of a Safe Patient Handling and Mobility System on Staff and Safety in a Long term Acute Care Unit. Poster Presentation.

## Ordering Information

Mölnlycke®

### Tortoise® Turning and Positioning System

Product Code	Description	Pcs/ case	HCPC Code
1400800	Tortoise Turning & Positioning System - 1 positioning PAD (38" x 58"), 1 fluidized positioner (16"x30") (PAD - Positive Air Displacement Offloading & Turning)	1	A9270
1400801	Tortoise Turning & Positioning System Bariatric - 1 positioning PAD (49" x 58"), 1 fluidized positioner (25"x36") (PAD - Positive Air Displacement Offloading & Turning)	1	-
1400802	Tortoise Turning & Positioning System Prone - 1 positioning PAD (38" x 58"), 1 prone positioning PAD (32" x 35.5"), 1 fluidized positioner (16" x 30"), 1 fluidized positioner with tab (11" x 22") , (PAD - Positive Air Displacement Offloading & Turning)	1	A9270



#### Contents

The components of the Tortoise Prone system include:

- 1 Prone Pad (This pad is square and is the smaller of the two pads)
- 2 Z-Flo™ Fluidized positioners (One for the body and one for the head)
- 1 Tortoise Prone Turning and Positioning Pad (main pad)

# Mölnlycke® Z-Flex™ Fluidized Heel Boot

Offloading to minimize risk of heel pressure injury

## Fluidized positioner

- Allows three dimensional contouring
- Built in boot for patient comfort

## Comfortable and durable

- Thermal regulating liner
- Constructed with rip-stop nylon material

## Easily adjustable

- Shin straps
- Ankle positioning straps
- Gate for easy access to the foot



## How Mölnlycke Z-Flex Fluidized heel boots work

The Mölnlycke Z-Flex Fluidized heel boot has an low-profile chamber designed to maximize surface area contact and redistribute pressure from the heel and Achilles tendon to the whole lower leg, shin and foot. The adjustable elastic straps allows the caregiver to adjust the boot to conform to different foot and leg sizes and shapes. The Mölnlycke Z-Flex easily converts to a flat assessment area without disturbing the patient and can accommodate sequential compression devices.

## Areas of use

- Heels

## Benefits of Mölnlycke Z-Flex Fluidized heel boots

- Designed with fluidized positioner to allow secure repositioning of the lower leg
- Adjustable shin straps accommodate a variety of leg sizes which allows use of sequential compression devices
- Anatomically neutral foot position is supported by an adjustable ankle positioning strap
- Built-in gate allows skin assessment of the heel without removing the boot
- Thermal regulating material helps keep legs comfortable
- Designed to provide ease of use and comfort for the patient
- One size fits most
- For single patient use only

## Mölnlycke® Z-Flex™ Fluidized Heel Boot

Product Code	Description	Pcs/ case	HCPC code
1400122	Z-Flex Fluidized Boot - heel protector with gate and ankle strap	2	E0191
1400123	Z-Flex Fluidized Boot - heel protector with gate and ankle strap	8	E0191

## Mölnlycke® Static Air Boot

Offloading to minimize risk of heel pressure injury



### How the Mölnlycke Static Air Boots work:

The Mölnlycke static air boot consists of low profile air chamber for offloading the heel. This boot provides support to the lower leg without putting direct pressure on achilles area.

### Benefits of Mölnlycke Static Air Boots

- Redistributes pressure over the heel
- Suspends the heel
- Single chamber design cradles the vulnerable Achilles tendon area
- Designed to provide ease of use and comfort for patients
- Available in a variety of sizes for different patient needs
- For single patient use only

### Areas of use

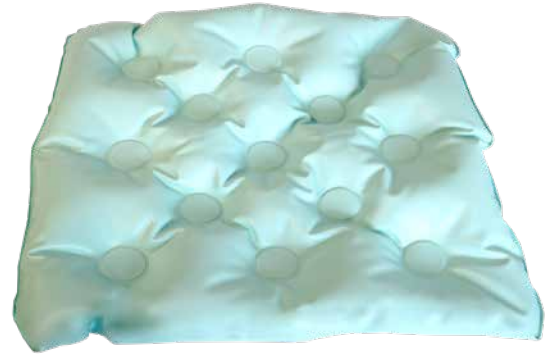
- Heels

## Mölnlycke® Static Air Heel Boot

Product Code	Description	Pcs/ case
1400119	Static Air Boot - Adult Standard	8
1400111	Static Air Boot - Petite/Pediatric	8
1400117	Static Air Boot - Adult Short	8
1400125	Static Air Boot - Bariatric	8

## Mölnlycke® Static Air Seat Cushion

Positive Air Displacement



### How the Mölnlycke Static Air Seat Cushion works

The Mölnlycke Static Air Seat Cushion is comprised of a single low profile air chamber designed to redistribute weight over the entire surface. The low profile design offers patient comfort and support using positive air displacement.

All seat cushions are pre-inflated and patient ready.

### Benefits of Mölnlycke Static Air Seat Cushion

- Designed to provide comfort and support for patients
- Redistributes pressure while sitting
- For single patient use only

## Mölnlycke® Static Air Seat Cushions

Product Code	Description	Dimensions	Pcs/ case	HCPC code
1400104	Pediatric Seat Cushion - Blue	19" x 18"	12	E0190
1400106	Adult Seat Cushion - Blue	21" x 20"	12	E0190
1400108	Bariatric Seat Cushion - Beige	24" x 31"	4	E0190

# Ordering information

## Mepilex® Border Flex‡



Product Code	Size	Pcs/box	Pcs/case	HCPCS
595200	3" x 3" (7.5 x 7.5 cm)	5	50	A6212
595300	4" x 4" (10 x 10 cm)	5	50	A6212
595400	6" x 6" (15 x 15 cm)	5	50	A6213
595600	6" x 8" (15 x 20 cm)	5	50	A6213

Available through  
September 2020

## Mepilex® Border Flex Oval ‡



Product Code	Size	Pcs/box	Pcs/case	HCPCS
283300	5" x 6.3" (13 x 16 cm)	5	35	A6212
283400	6" x 7.5" (15 x 19 cm)	5	45	A6213

Available  
October 2020

## Mepilex® Border Flex Oval ‡ NEW



Product Code	Size	Pcs/box	Pcs/case	HCPCS
583300	5.1" x 6.3" (13 x 16 cm)	5	35	A6212
583400	6" x 7.5" (15 x 19 cm)	5	45	A6213
583500	3.1" x 4" (7.8 x 10 cm)	5	50	A6212

## Mepilex® Border‡



Product Code	Size	Pcs/box	Pcs/case	HCPCS
295200	3" x 3" (7.5 x 7.5 cm)	5	70	A6212
295300	4" x 4" (10 x 10 cm)	5	50	A6212
295400	6" x 6" (15 x 15 cm)	5	50	A6213
295600	6" x 8" (15 x 20 cm)	5	50	A6213

## Mepilex® Border Ag‡



Product Code	Size	Pcs/box	Pcs/case	HCPCS
395290	3" x 3" (7.5 x 7.5 cm)	5	70	A6212
395390	4" x 4" (10 x 10 cm)	5	50	A6212
395490	6" x 6" (15 x 15 cm)	5	50	A6213
395690	6" x 8" (15 x 20 cm)	5	45	A6213

## Mepilex® Border Sacrum Ag‡



Product Code	Size	Pcs/box	Pcs/case	HCPCS
382090	7.2" x 7.2" (18 x 18 cm)	5	40	A6213
382490	9.2" x 9.2" (23 x 23 cm)	5	25	A6213

## Mepilex® Border Sacrum‡



Product Code	Size	Pcs/box	Pcs/case	HCPCS
282055	6.3" x 7.9" (16 x 20 cm)	10	50	A6213
282455	8.7" x 9.8" (22 x 25 cm)	10	40	A6213

## Mepilex® Border Heel‡



Product Code	Size	Pcs/box	Pcs/case	HCPCS
282790	8.7" x 9.8" (22 x 25 cm)	10	30	A6210

## UPGRADED Mepilex Border Post-Op‡

Product Code	Size inches (cm)	Pcs/box	Pcs/case	HCPCS
496300	4x6 (10x15cm)	10	100	A4649
496405	4x8 (10x20cm)	5	25	A4649
496455	4x10 (10x25cm)	5	30	A4649
496605	4x12 (10x30cm)	5	25	A4649
496650	4x14 (10x35cm)	5	55	A4649

## Mepilex® Border (post-op sizes)‡

Product Code	Size	Pcs/box	Pcs/case	HCPCS
295800	4" x 8" (10 x 20 cm)	5	25	A6212
295850	4" x 10" (10 x 25 cm)	5	35	-
295900	4" x 12" (10 x 30 cm)	5	25	A6213

## UPGRADED Mepilex Border Post-Op Ag‡

Product Code	Size inches (cm)	Pcs/box	Pcs/case	HCPCS
498300	4x6 (10x15cm)	5	70	A6212
498400	4x8 (10x20cm)	5	25	A6212
498450	4x10 (10x25cm)	5	35	A6212
498600	4x12 (10x30cm)	5	25	A6213
498650	4x14 (10x35cm)	5	60	A6213

## Mepilex® Border Ag (post-op sizes)‡

Product Code	Size	Pcs/box	Pcs/case	HCPCS
395890	4" x 8" (10 x 20 cm)	5	35	A6213
395790	4" x 10" (10 x 25 cm)	5	35	A6212
395990	4" x 12" (10 x 30 cm)	5	25	A6213

‡ Packaged sterile in single packs



# Ordering information

## Mepilex® Border Lite†



Product Code	Size	Pcs/box	Pcs/case	HCPCS
281000	1.6" x 2" (4 x 5 cm)	10	70	A6212
281100	2" x 5" (5 x 12.5 cm)	5	65	A6212
281200	3" x 3" (7.5 x 7.5 cm)	5	70	A6212
281300	4" x 4" (10 x 10 cm)	5	50	A6212
289800	6" x 6" (15 x 15 cm)	5	50	A6213

## Mepilex®†



Product Code	Size	Pcs/box	Pcs/case	HCPCS
294199	4" x 4" (10 x 10 cm)	5	70	A6209
294090	4" x 5" (10 x 12 cm)	5	50	A6210
294299	4" x 8" (10 x 20 cm)	5	45	A6210
294399	6" x 6" (15 x 15 cm)	5	25	A6210
294499	8" x 8" (20 x 20 cm)	5	20	A6211
294500	8" x 20" (20 x 50 cm)	2	12	A6211

## Mepilex® Heel†



288100	5" x 8" (13 x 20 cm)	5	25	A6210
--------	----------------------	---	----	-------

## Mepilex® Ag†



Product Code	Size	Pcs/box	Pcs/case	HCPCS
287100	4" x 4" (10 x 10 cm)	5	70	A6209
287090	4" x 5" (10 x 12 cm)	5	70	A6210
287200	4" x 8" (10 x 20 cm)	5	45	A6210
287300	6" x 6" (15 x 15 cm)	5	25	A6210
287400	8" x 8" (20 x 20 cm)	5	20	A6211
287500	8" x 20" (20 x 50 cm)	2	10	A6211

## Mepilex® XT†



Product Code	Size	Pcs/box	Pcs/case	HCPCS
211100	4" x 4" (10 x 10 cm)	5	70	A6209
211200	4" x 8" (10 x 20 cm)	5	45	A6210
211300	6" x 6" (15 x 15 cm)	5	25	A6210
211400	8" x 8" (20 x 20 cm)	5	20	A6211

## Mepilex® Lite†



Product Code	Size	Pcs/box	Pcs/case	HCPCS
284090	2.4" x 3.4" (6 x 8.5 cm)	5	70	A6209
284190	4" x 4" (10 x 10 cm)	5	50	A6209
284390	6" x 6" (15 x 15 cm)	5	50	A6210
284599	8" x 20" (20 x 50 cm)	4	24	—

## Mepilex® Transfer†



Product Code	Size	Pcs/box	Pcs/case	HCPCS
294899	6" x 8" (15 x 20 cm)	5	40	A6210
294599	8" x 20" (20 x 50 cm)	4	24	A6211

## Mepilex® Transfer Ag†



Product Code	Size	Pcs/box	Pcs/case	HCPCS
394190	4" x 5" (10 x 12.5 cm)	5	50	A6210
394890	6" x 8" (15 x 20 cm)	10	50	A6210
394590	8" x 20" (20 x 50 cm)	2	12	A6211

## Lyof foam® Max†



Product Code	Size	Pcs/box	HCPCS
603200	3" x 3.4" (7.5 x 8.5 cm)	10	A6209
603201	4" x 4" (10 x 10 cm)	10	A6209
603203	4" x 8" (10 x 20 cm)	10	A6210
603204	6" x 6" (15 x 15 cm)	10	A6210
603205	6" x 8" (15 x 15 cm)	10	A6210
603206	8" x 8" (20 x 20 cm)	10	A6211

## Lyof foam® Max T†



Product Code	Size	Pcs/box	HCPCS
603207	3.6" x 3.6" (9 x 9 cm)	10	—

## Mepitel® One†



Product Code	Size	Pcs/box	Pcs/case	HCPCS
289100	2" x 3" (5 x 7.5 cm)	10	70	A6206
289300	3" x 4" (7.5 x 10 cm)	10	40	A6206
289500	4" x 7" (10 x 18 cm)	10	70	A6207
289700	6.8" x 10" (17 x 25 cm)	5	40	A6208
289750	10.8" x 20" (27.5 x 50 cm)	2	14	A6208

† Packaged sterile in single packs

# Ordering information

## Mepitel®‡



Product Code	Size	Pcs/box	Pcs/case	HCPCS
290599	2" x 3" (5 x 7.5 cm)	10	50	A6206
290799	3" x 4" (7.5 x 10 cm)	10	40	A6206
291099	4" x 7" (10 x 18 cm)	10	70	A6207
292005	8" x 12" (20 x 30 cm)	5	30	A6208

## Mepitel® Ag‡



Product Code	Size	Pcs/box	Pcs/case	HCPCS
390590	2" x 3" (5 x 7.5 cm)	10	50	A6206
390790	3" x 4" (7.5 x 10 cm)	10	40	A6206
390090	4" x 5" (10 x 12 cm)	10	60	A6207
391090	4" x 7" (10 x 18 cm)	10	70	A6207
392090	8" x 12" (20 x 30 cm)	5	30	A6208
392059	8" x 20" (20 x 50 cm)	2	12	A6208

## Exufiber®‡



Product Code	Size	Pcs/box	Pcs/case	HCPCS
709900	2" x 2" (5 x 5 cm)	10	40	A6196
709902	4" x 4.8" (10 x 12 cm)	10	60	A6197
703903	6" x 6" (15 x 15 cm)	10	60	A6197
703909	0.8" x 17.7" (2 x 45 cm)	5	25	A6196

## Exufiber® Ag+‡



Product Code	Size	Pcs/box	Pcs/case	HCPCS
603421	2" x 2" (5 x 5 cm)	10	40	A6196
603422	4" x 4.8" (10 x 12 cm)	10	60	A6197
603423	6" x 6" (15 x 15 cm)	10	60	A6197
603424	8" x 12" (20 x 30 cm)	5	20	A6198
603420	0.8" x 17.7" (2 x 45 cm)	5	20	A6199

## Melgisorb® Plus‡



Product Code	Size	Pcs/box	Pcs/case	HCPCS
252000	2" x 2" (5 x 5 cm)	10	100	A6196
252200	4" x 4" (10 x 10 cm)	10	100	A6196
252500	4" x 8" (10 x 20 cm)	10	100	A6197
253500	1.25 x 17.7" (3 x 45 cm)	5	50	A6199

## Melgisorb® Ag‡



Product Code	Size	Pcs/box	Pcs/case	HCPCS
255050	2" x 2" (5 x 5 cm)	10	100	A6196
255100	4" x 4" (10 x 10 cm)	10	100	A6196
255150	6" x 6" (15 x 15 cm)	10	100	A6197
255200	8" x 12" (20 x 30 cm)	5	50	A6198
255600	1.2" x 18" (3 x 44 cm)	10	100	A6199

## Normlgel® Ag^



Product Code	Size	Pcs/box	Pcs/case	HCPCS
350450	1.5 oz (45 gm)	10	30	A6248

^ Normlgel® Ag is unsterile and packed in tubes

## Mesalt®‡



Product Code	Size	Pcs/box	Pcs/case	HCPCS
285580	4" x 4" (2" x 2" folded)	30	240	A6222
285780	6" x 6" (3" x 3" folded)	30	240	A6222
286080	8" x 8" (4" x 4" folded)	30	180	A6228
285280	3/4" x 39" Ribbon	10	80	A6226

## Alldress®‡



Product Code	Size	Pcs/box	Pcs/case	HCPCS
265329	4" x 4" (10 x 10 cm)/ 2" x 2" (5 x 5 cm)	10	70	A6203
265349	6" x 6" (15 x 15 cm)/ 4" x 4" (10 x 10 cm)	10	100	A6203
265369	6" x 8" (15 x 20 cm)/ 4" x 6" (10 x 15 cm)	10	120	A6204

## Mextra® Superabsorbent‡



Product Code	Size	Pcs/box	Pcs/case	HCPCS
610000	5" x 5" (12.5 x 12.5 cm)	10	50	A6196
610100	5" x 7" (12.5 x 17.5 cm)	10	40	A6197
610200	5" x 9" (12.5 x 22.5 cm)	10	90	A6197
610300	7" x 9" (17.5 x 22.5 cm)	10	40	A6197
610400	9" x 11" (22.5 x 25 cm)	10	40	A6198
610500	9" x 13" (22.5 x 32.5 cm)	10	50	A6198

‡ Packaged sterile in single packs

# Ordering information

## Mepore® Pro†



Product Code	Size	Pcs/box	Pcs/case	HCPCS
670890	2.5" x 3" (6 x 7 cm)	60	480	A6203
670990	3.6" x 4" (9 x 10 cm)	40	320	A6203
671090	3.6" x 6" (9 x 15 cm)	40	320	A6203
671190	3.6" x 8" (9 x 20 cm)	30	180	A6203
671290	3.6" x 10" (9 x 25 cm)	30	180	A6203
671390	3.6" x 12" (9 x 30 cm)	30	270	A6203

## Mepore®‡



Product Code	Size	Pcs/box	Pcs/case	HCPCS
670800	2.5" x 3" (6 x 7 cm)	60	480	—
670900	3.6" x 4" (9 x 10 cm)	50	400	—
671000	3.6" x 6" (9 x 15 cm)	50	400	—
671299	3.6" x 10" (9 x 25 cm)	30	180	—
671300	3.6" x 12" (9 x 30 cm)	30	270	—
671400	3.6" x 14" (9 x 35 cm)	30	180	—

## Mepore® Film‡



Product Code	Size	Pcs/box	Pcs/case	HCPCS
270600	2.4" x 2.6" (6 x 7 cm)	100	600	A6257
271500	4" x 5" (10 x 12.7 cm)	70	210	A6258
272500	4" x 10" (10 x 25 cm)	20	100	A6258
273000	6" x 8.5" (15 x 21.5 cm)	10	50	A6258

## Mepiform®‡



Product Code	Size	Pcs/box	Pcs/case
293199	1.6" x 12" (4 x 30 cm)	5	50
293299	2" x 3" (5 x 7.5 cm)	5	25
293499	4" x 7" (10 x 18 cm)	5	35

## Mepitac®‡



Product Code	Size	Rolls/box	HCPCS
298300	3/4" x 118" (2 x 300 cm)	12	A4452
298400	1.5" x 59" (4 x 150 cm)	12	A4452

‡ Packaged sterile in single packs

## Mefix®^



Product Code	Size	Pcs/box	Pcs/case	HCPCS*
310299†	1" x 11 yds (2.5 cm x 10 m)	1	40	A4450
310599	2" x 11 yds (5 cm x 10 m)	1	40	A4450
311099	4" x 11 yds (10 cm x 10 m)	1	20	A4450
311599	6" x 11 yds (15 cm x 10 m)	1	22	A4450
312000	8" x 11 yds (20 cm x 10 m)	1	10	—

^ Packaged in boxes containing individual, non-sterile rolls.

† This size does not have a perforated split in the protection paper

\* A4450 (per 18 square inches)

## Setopress®\*\*



Product Code	Size	Roll	Box/tray	HCPCS
3505	4" x 138" (10cm x 3.5m)	1	12	A6452

\*\* Individually packed in cartons of 12

## Tubifast® 2-Way Stretch‡

Product Code	Line	Product	Limb size	Width*
2434	RED	Small Limbs	3.5" - 7.1" (9 - 18 cm)	1.5" (3.5 cm)
2436	GREEN	Small and medium limbs	5.5" - 9.5" (14 - 24 cm)	2" (5 cm)
2438	BLUE	Large limbs	9.5" - 15.8" (24 - 40 cm)	3" (7.5 cm)
2440	YELLOW	Extra-large limbs, heads, children's trunks	13.8" - 25.2" (35 - 64 cm)	4.5" (10.75 cm)
2444	PURPLE	Large adult trunks	25.2" - 51.2 (64 - 130 cm)	8" (20 cm)

\* Length for all Tubifast® 2-way stretch is 10 m.

## Tubifast® Garments‡



Product Code	Description	Age/Size
992007	Vest	6-24 months
992008	Vest	2-5 years
992009	Vest	5-8 years
992010	Vest	8-11 years
992011	Vest	11-14 years
992012	Tights	6-24 months
992013	Leggings	2-5 years
992014	Leggings	5-8 years
992015	Leggings	8-11 years
992016	Leggings	11-14 years
992017	Socks	One size fits all 2-14 yrs
5922	Gloves	Extra Small Child
5923	Gloves	Small Child
5921	Gloves	Med/Lg Child - Sm/Med Adult
5920	Gloves	Medium/Large Adult

# Ordering information

## Tubigrip®



		Product Code			HCPCS
Shade		Natural		Beige	
Size		3.28' (1m)	32.81' (10m)	32.81' (10m)	
<b>A</b>	Infant feet and arms	-	1435	-	A6457
<b>B</b>	Small hands and arms	1520	1436	1449	A6457
<b>C</b>	Medium arms, small ankles	1521	1443	1450	A6457
<b>D</b>	Large arms, medium ankles, small knees	1522	1437	1451	A6457
<b>E</b>	Large ankles, medium knees, small thighs	1528	1434	1448	A6457
<b>F</b>	Large knees, medium thighs	1523	1438	1452	A6457
<b>G</b>	Large thighs	-	1439	1453	A6457
<b>J</b>	Small trunks	-	1440	-	A6457
<b>K</b>	Small/Medium trunks	-	1441	-	A6457
<b>L</b>	Large trunks	-	1442	-	A6457

## Dermafit



Size	Description	Product Code for 10m roll (32.81')
<b>A*</b>	Infant feet and arms	131935
<b>B</b>	Small hands and limbs	131936
<b>C</b>	Adult hands and limbs	131943
<b>D</b>	Large arms and legs	131937
<b>E</b>	Legs and small thighs	131934
<b>F</b>	Large knees and thighs	131938
<b>G</b>	Large thighs	131939
<b>J</b>	Small trunks	131940
<b>K</b>	Medium trunks	131941
<b>L</b>	Large trunks	131942

## Z-Flo™ Fluidized Positioner

Adult			
Product Code	Description	Pcs/case	HCPC Code
1400600	Ancillary Positioner - Small with 2 tabs	1	E0190
1400601	Ancillary Positioner - Standard with 2 tabs	1	E0190
1401001	Utility Positioner - Small with tab and cover	1	E0190
1401003	Utility Positioner - Medium with tab	1	E0190
1401005	Utility Positioner - Large	1	E0190
1401007	Utility Positioner	8	E0190
1401008	Utility Positioner with thermal regulating cover	8	E0190
1401011	Utility Positioner - Medium	1	E0190
1400902	Utility Positioner Kit- 1 utility positioner (12x20) and 1 medium utility positioner (16x30)	1	—

## Fluidized Positioner

Covers and Disposable Covers		
Product Code	Description	Pcs/ case
1400234	Covers - Small, Square	50
1400228	Covers - Small	50
1400240	Covers - Medium	50
1400201	Covers - Large	50
1400207	Covers - Medium, Full body	50
1400215	Covers - Large, Full body	50
1400225	Covers - Large Tube	50
1400218	Straps	50
1400229	Disposable Covers - Small	50
1400241	Disposable Covers - Medium	50
1400202	Disposable Covers - Large	50
1400208	Disposable Covers - Medium, Full Body	50
1400216	Disposable Covers - Large, Full Body	50

Mölnlycke Health Care wound care products can serve as integral components of wound management programs. If infection is suspected, product use may be continued if proper infection treatment is initiated and if recommended by a physician.

The information provided in this brochure is not to be construed as the practice of medicine or substituted for the independent medical judgment of a patient's treating physician. Information contained herein, including but not limited to suggestions for product wear time, product selection and suggested use is based on generalizations and does not consider the unique characteristics of an individual's wound. Each patient's physician shall remain solely responsible for assessing the severity of patient wounds, determining the appropriate treatment, and managing treatment of the wound. For additional information, please refer to the applicable product insert or contact Mölnlycke Health Care US, LLC at 1-800-843-8497

DISCLAIMER: This document is not a complete guide on all matters related to reimbursement, nor does Mölnlycke Health Care guarantee that its use will result in payment for services. This information is subject to change over time, and may be incorrect at any time following publication. The reader is encouraged to independently verify data and confirm the applicability of any coding or billing practice with applicable payers prior to submitting claims. The reader is solely responsible for compliance with applicable laws.

# Ordering information

## Z-Flo™ Fluidized Positioner

Neonatal and Pediatric: Positioning Kits			
Product Code	Description	Pcs/case	HCPC Code
1400300	Large Tube Combo - 1 Large Tube (60"x6.5"), 1 Medium Utility (9"x15"), 2 covers and 2 straps (20")	6	
1400304	Medium Full Body Kit - 1 Medium Full Body (16"x24"), 1 Small Utility (7"x10"), 2 covers and 2 straps (20")	6	
1400307	2 Positioners Kit - Large Full Body (20"x30"), 1 Small Utility (7"x10"), 2 covers and 2 straps (20")	4	
1400308	Large Full Body Kit - 1 Large Full Body (20"x30"), 1 Medium Utility (9"x15"), 2 covers and 2 straps (20")	4	

## Z-Flo™ Fluidized Positioner

Neonatal & Pediatric: Utility, tube and specialty products			
Product Code	Description	Pcs/case	HCPC Code
1400233	Square Utility Positioner - Small with cover	18	-
1400227	Utility Positioner - Small with cover	12	-
1400239	Utility Positioner - Medium with cover	6	-
1400200	Utility Positioner - Large with cover	6	E0190
1400222	Small Tube with 3 disposable covers (Case of 6 positioners w/ 18 disposable covers)	6	-
1400224	Large Tube with cover	6	-

## Tortoise® Turning and Positioning System

Product Code	Description	Pcs/case	HCPC Code
1400800	Tortoise Turning & Positioning System - 1 positioning PAD (38" x 58"), 1 fluidized positioner (16"x30") (PAD - Positive Air Displacement Offloading and Turning)	1	A9270
1400801	Tortoise Turning & Positioning System Bariatric - 1 positioning PAD (49" x 58"), 1 fluidized positioner (25"x36") (PAD - Positive Air Displacement Offloading and Turning)	1	-
1400802	Tortoise Turning & Positioning System Prone - 1 positioning PAD (38" x 58"), 1 prone positioning PAD (32" x 35.5"), 1 fluidized positioner (16" x 30"), 1 fluidized positioner with tab (11" x 22"), (PAD - Positive Air Displacement Offloading and Turning)	1	A9270

## Z-Flex™ Fluidized Heel Boot

Product Code	Description	Pcs/case	HCPC Code
1400122	Z-Flex Fluidized Boot - heel protector with gate and ankle strap	2	E0191
1400123	Z-Flex Fluidized Boot - heel protector with gate and ankle strap	8	E0191

## Static Air Heel Boot

Product Code	Description	Pcs/case	HCPC Code
1400119	Static Air Boot - Adult Standard	8	
1400111	Static Air Boot - Petite/Pediatric	8	
1400117	Static Air Boot - Adult Short	8	
1400125	Static Air Boot - Bariatric	8	

## Static Air Seat Cushions

Product Code	Description	Pcs/case	HCPC Code
1400104	Pediatric Seat Cushion - Blue	12	E0190
1400106	Adult Seat Cushion - Blue	12	E0190
1400108	Bariatric Seat Cushion - Beige	4	E0190

Z-Flo is a trademark in the United States and other countries of EdiZONE, LLC of Alpine, Utah, USA.

The Mölnlycke Health Care, Mepilex, Mepitel, Mepiform, Mepitac, Safetac, Exufiber, Melgisorb, Normlgel, Alldress, Mepore, Mesalt, Mefix, Lyofoam, Mextra, Tubifast, Dermafit, Tubigrip, Setopress, EZ Derm, Tortoise, and Z-Flex trademarks, names and logo types are registered globally to one or more of the Mölnlycke Health Care Group of Companies. Distributed by Mölnlycke Health Care US, LLC, Norcross, Georgia 30092. © 2020 Mölnlycke Health Care AB. All rights reserved. 1-800-882-4582. MHC-2020-78727





We're here to help you, when you need us. Call your Mölnlycke Health Care Representative or Clinical Specialist.

1-800-843-8497 | [www.molnlycke.us](http://www.molnlycke.us) | 5445 Triangle Parkway, Suite 400, Peachtree Corners, GA 30092