



THE SELF-ADHESIVE ABSORBENT DRESSING

Mepore® is an air permeable, self-adhesive dressing ideal for low to moderately exuding wound

Soft, elastic, nonwoven fabric backing with high breathability

Absorbent wound pad

Skin friendly adhesive



How to use Mepore®



Open the package and remove the dressing.



Grip both overlapping release papers, exposing adhesive surface allowing initial fixation of the dressing.



Position the dressing on the skin without stretching and gently remove the rest of the release papers. Firmly smooth adhesive border to obtain proper adhesion. Do not stretch the dressing when applying.

How Mepore® works

The porous structure of the nonwoven backing fabric ensures air and water vapor permeability, and it provides a barrier for blood and fluid strike-through. **Mepore®** is flexible, conforms well to body contours and allows body movements when in place. The polyacrylate adhesive has been designed to be gentle to the skin but at the same time provide secure fixation. The wound pad can absorb moderate amounts of wound fluids and the low-adherent wound contact layer reduces the risk of adherence to the wound. The easy-to-remove protection paper permits aseptic application, as well as simplifying dressing application.

Benefits of Mepore®

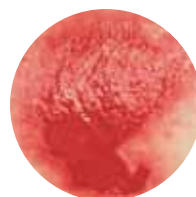
- Skin friendly water based adhesive
- Low adherent wound contact layer minimizes risk of adherence to the wound
- Flexible fluid repellent backing
- Easy-to-remove protection paper allows for convenient and aseptic application
- Air permeable; prevents maceration and provides better comfort
- Rounded corners for secure fixation (all sizes up to 3.6" x 6")

Areas of use

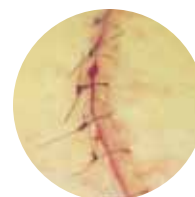
Mepore® can be used in a wide variety of wounds which have low to moderate exudate levels. These include surgical wounds, minor burns, cuts and abrasions.

Wear time: PRN

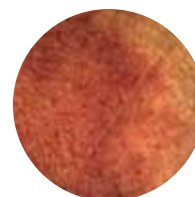
Frequency of change: The frequency of dressing changes will be governed by the condition of the underlying wound. Upon removal grasp the edge and slowly peel the dressing from the skin in the direction of hair growth.



Fragile epithelializing wound



Surgical wound



Skin at risk

Mepore® Ordering Information†

Product Code	Size	Pieces/box	Pieces/case	HCPCS
670800	2.5" x 3" (6 x 7 cm)	60	480	A6219
670900	3.6" x 4" (9 x 10 cm)	50	400	A6219
671000	3.6" x 6" (9 x 15 cm)	50	400	A6219
671100	3.6" x 8" (9 x 20 cm)	30	180	A6219
671200	3.6" x 10" (9 x 25 cm)	30	210	A6219
671300	3.6" x 12" (9 x 30 cm)	30	270	A6220
671400	3.6" x 14" (9 x 35 cm)	30	180	A6220

† Packaged sterile in single packs

Precautions: Care should be taken to ensure that **Mepore®** is not applied under tension, to prevent shearing forces causing damage to the skin. This is particularly important when the dressing is applied over joints.



5550 Peachtree Parkway, Suite 500, Norcross, GA 30092 | 800.882.4582 | www.molnlycke.us | www.mhcwoundcare.com

The Mölnlycke Health Care, Mepilex, Mepitel, Mepiform, Mepitac, and Safetac, names and respective logos are registered trademarks of Mölnlycke Health Care AB. Distributed by Mölnlycke Health Care US, LLC, Norcross, Georgia 30092. © 2012. Mölnlycke Health Care AB. 1.800.882.4582. US004040804

MHC-2012-353 - 200011 08.12