



## The absorbent foam dressing with SafetaC<sup>®</sup> technology

- Minimizes pain and trauma at dressing changes<sup>1,2</sup>
- Gentle adherence with better conformability and comfort
- Does not slip under dressing retention and may easily be cut for customization

### SafetaC<sup>®</sup> technology layer

- Reduces pain and trauma during dressing change<sup>1</sup>
- Does not adhere to the moist wound bed, only to dry skin<sup>3</sup>
- Seals the wound margins and reduces risk of maceration<sup>4</sup>

### Polyurethane foam pad

- Absorbs exudate
- Conformable
- May be used under compression

### Polyurethane backing film

- Breathable
- Moisture proof
- Viral and bacteria proof



Available in heel configuration

### SafetaC<sup>®</sup> technology. Less pain and less trauma.

SafetaC<sup>®</sup> technology is a patented adhesive technology that minimizes pain to patients and trauma to wounds. SafetaC<sup>®</sup> technology is available exclusively on Mölnlycke Health Care dressings, including Mepilex<sup>®</sup> wound care dressings, Mepitel<sup>®</sup>, Mepiform<sup>®</sup> and Mepitac<sup>®</sup>.

For more information visit [www.molnlyckeUSA.com](http://www.molnlyckeUSA.com)



Skin stripping may occur with traditional adhesive



Minimal skin stripping with SafetaC<sup>®</sup> technology

## How to use Mepilex®



Clean the wound area. Cut for customization, if desired. Remove the larger release film.



Mepilex® should overlap the wound bed by at least 2 cm onto the surrounding skin. Apply the adherent side to the wound. Remove the shorter release film and mold the dressing in place. Do not stretch.



Hold Mepilex® securely in place with a light bandage or other dressing retention method (e.g., Tubigrip®, Tubifast®, etc.)

## How to use Mepilex® Heel



Clean the wound area. Cut for customization, if desired. Remove the larger release film.



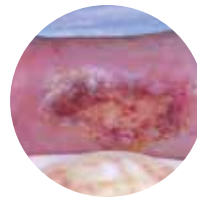
Fix the dressing under the foot. Remove the shorter release film. Mold the dressing around the heel and bring edges together. Mepilex® Heel should overlap the wound bed by at least 2 cm onto the surrounding skin.



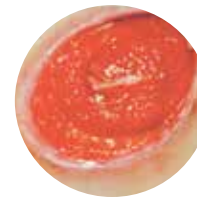
Hold Mepilex® Heel securely in place with a light bandage or other dressing retention method (e.g., Tubigrip®, Tubifast®, etc.)

## How Mepilex® works

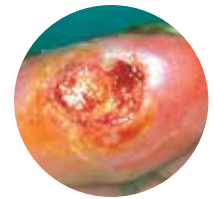
Mepilex® is a soft and highly conformable foam dressing that absorbs exudate and maintains a moist wound environment. The Safetac® technology layer seals the wound edges, preventing the exudate from leaking onto the surrounding skin, thus minimizing the risk of maceration. The Safetac® technology layer ensures that the dressing can be changed without damaging the wound or surrounding skin or exposing the patient to additional pain.



Lower extremity ulcers



Pressure ulcers



Diabetic ulcer

## Benefits of Mepilex®

- Minimizes pain and trauma at dressing changes
- Stays in place allowing easy application of compression or retention bandages
- Well suited for use under compression bandages
- May be cut to suit various wound shapes and difficult-to-dress locations
- Promotes patient comfort during wear
- May remain in place for several days depending on the condition of the wound
- May be adjusted without losing its adherent properties
- Low potential for skin irritation and allergy

## Areas of use

- Moderately exuding wounds
- Leg and foot ulcers
- Pressure ulcers
- Under compression
- Graft and donor sites
- Traumatic wounds (e.g., skin tears and secondary healing wounds)

**Wear time:** Up to 7 days

## Mepilex® Ordering Information†



Product Code	Size	Pcs/box	Pcs/case	HCPCS
294199	4" x 4" (10 x 10 cm)	5	70	A6209
294090	4" x 5" (10 x 12 cm)	5	50	A6210
294299	4" x 8" (10 x 20 cm)	5	45	A6210
294399	6" x 6" (15 x 15 cm)	5	25	A6210
294499	8" x 8" (20 x 20 cm)	5	20	A6211
294500	8" x 20" (20 x 50 cm)	2	12	A6211

## Mepilex® Heel Ordering Information‡



288100	5" x 8" (13 x 20 cm)	5	25	A6210
--------	----------------------	---	----	-------

‡ Packaged sterile in single packs

## References:

1. White R., A Multinational survey of the assessment of pain when removing dressings. Wounds UK 2008; Vol 4, No 1.
2. Dykes PJ et al. Effects of adhesive dressings on the stratum corneum of the skin. J Wound Care 2001; 10(2):7-10.
3. Dykes PJ. The effect of adhesive dressing edges on cutaneous irritancy and skin barrier function. J Wound Care 2007, 16(3):97-100.
4. Meaume S et al. A study to compare a new self adherent soft silicone dressing with a self adherent polymer Management, 2003.



Scan for more information

Socialize with us:



**We're here to help you, when you need us. Call your Mölnlycke Health Care Representative or Regional Clinical Specialist.**

1-800-843-8497 | [www.molnlyckeUSA.com](http://www.molnlyckeUSA.com) | [info.woundcare@molnlycke.com](mailto:info.woundcare@molnlycke.com) | 5550 Peachtree Parkway, Suite 500, Norcross, GA 30092