

Exufiber[®]

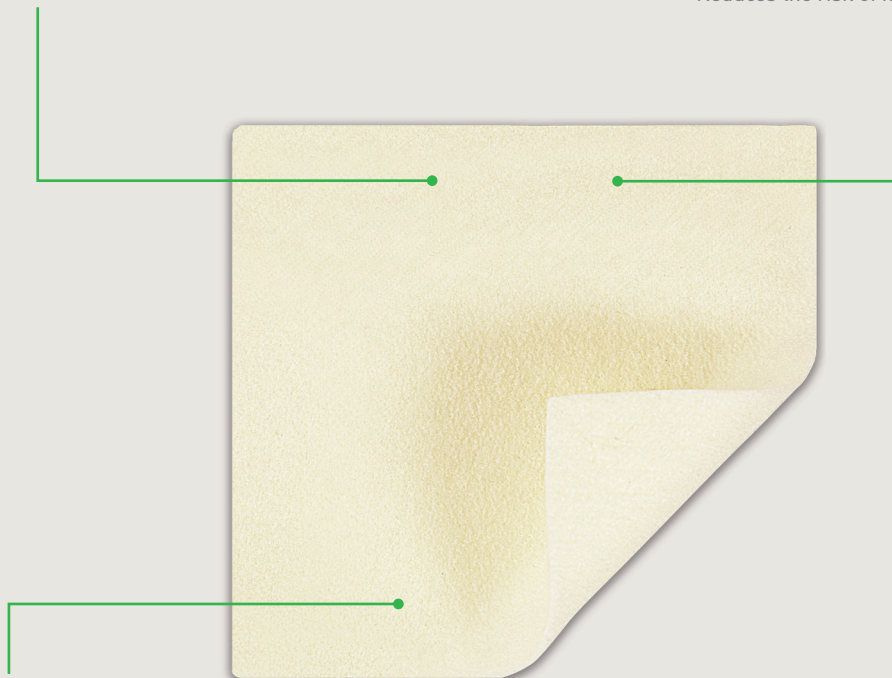
Gelling fiber dressing

High tensile strength³

- Enables one-piece dressing removal²
- Reduces the risk of residue and fibers being left in the wound²

High retention capacity¹

- Absorbs and retains exudate, bacteria and blood^{2,4,5}
- Reduces the risk of leakage onto surrounding skin²
- Reduces the risk of maceration²



Hydrolock[®] Technology

- Highly absorbent, even under compression⁷
- Locks in fluid, minimizing risk of leakage and maceration¹
- May be left in place for up to 7 days⁶

- High retention capacity to reduce the risk of leakage and maceration¹
- High tensile strength enabling one-piece dressing removal^{2,3}
- Gels in contact with exudate to create moist wound environment

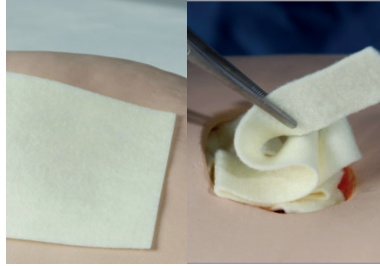
Exufiber[®]


Mölnlycke[®]

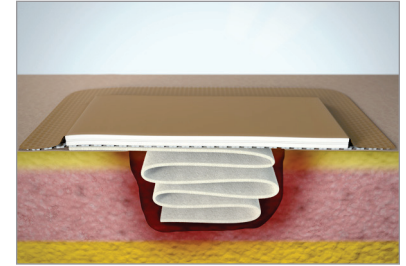
How to use Exufiber®



1. Cleanse the wound with wound cleanser according to clinical practice. Thoroughly dry the surrounding skin.
2. Aseptically remove the dressing from package.



3. For shallow wounds: apply Exufiber dressing to cover the entire wound with overlap on to the surrounding skin by at least 1-2 cm. The Exufiber dressing will slightly shrink as it absorbs wound fluid.
4. For wounds with depth: loosely pack ribbon or sheet into the wound.



5. Fixate with an appropriate secondary dressing. Compression therapy may be used in conjunction with Exufiber.

How Exufiber works

Exufiber is a sterile, nonwoven dressing made from highly absorbent polyvinyl alcohol fibres. In contact with wound exudate, Exufiber transforms into a gel that facilitates moist wound healing and ease of removal during dressing changes². Exufiber is available both as a sheet and ribbon as dressings.

Benefits of Exufiber

- High tensile strength to enable one-piece dressing removal^{2,3}
- High retention capacity reduces the risk of leakage and maceration^{1,2}
- Absorbs and retains exudate, blood and bacteria^{2,4,5}
- Highly absorbent, even under compression therapy⁷
- May be left in place for up to 7 days⁶

Precautions

All wounds should be inspected frequently. In case of signs of infection, consult a health care professional for infection treatment. Exufiber is not intended for dry wounds or full thickness burns.

If the dressing dries out and is difficult to remove, it should be moistened according to clinical practice and allowed to soak until it lifts easily.

This document is not a complete guide on all matters related to reimbursement, nor does Mölnlycke Health Care guarantee that its use will result in payment for services. This information is subject to change over time, and may be incorrect at any time following publication. The reader is encouraged to independently verify data and confirm the applicability of any coding or billing practice with applicable payers prior to submitting claims. The reader is solely responsible for compliance with applicable laws.

Reference: 1. Data-on-file report 20140806-001. 2. Chadwick P., McCardle J. Open, non-comparative, multi-centre post clinical study of the performance and safety of the gelling fiber wound dressing on diabetic foot ulcers. *Journal of Wound Care* 2016, 25(4): 290-300. 3. Data-on-file report PD-521248_01. 4. Data-on-file report 20140812-013-V1. 5. Mölnlycke Health Care Laboratory Report PD-521245 6. Exufiber instructions for use 7. Mölnlycke Health Care Laboratory Report PD-521232

5550 Peachtree Parkway, Suite 500, Norcross, GA 30092 | 1-800-843-8497 | www.molnlycke.us

The Mölnlycke, Exufiber and Hydrolock trademarks, names and logo types are registered globally to one or more of the Mölnlycke Health Care Group of Companies. Distributed by Mölnlycke Health Care US, LLC, Norcross, Georgia 30092. © 2017 Mölnlycke Health Care AB. All rights reserved. MHC-2017-25409

Intended Use

Exufiber is intended to be used on a wide range of exuding wounds:

- Pressure ulcers
- Leg and foot ulcers
- Partial thickness burns
- Surgical wounds
- Donor sites
- Chronic wounds



Exufiber ordering information

Product Code	Size	Pcs/box	Pcs/case	HCPCS
603300	2" x 2" (5 x 5 cm)	10	40	A6196
603311	4" x 4.8" (10 x 12 cm)	10	40	A6197
603302	6" x 6" (15 x 15 cm)	10	60	A6197
603308	0.8" x 17.7" (2 x 45 cm)	5	20	A6199



USMM 270548 04.17