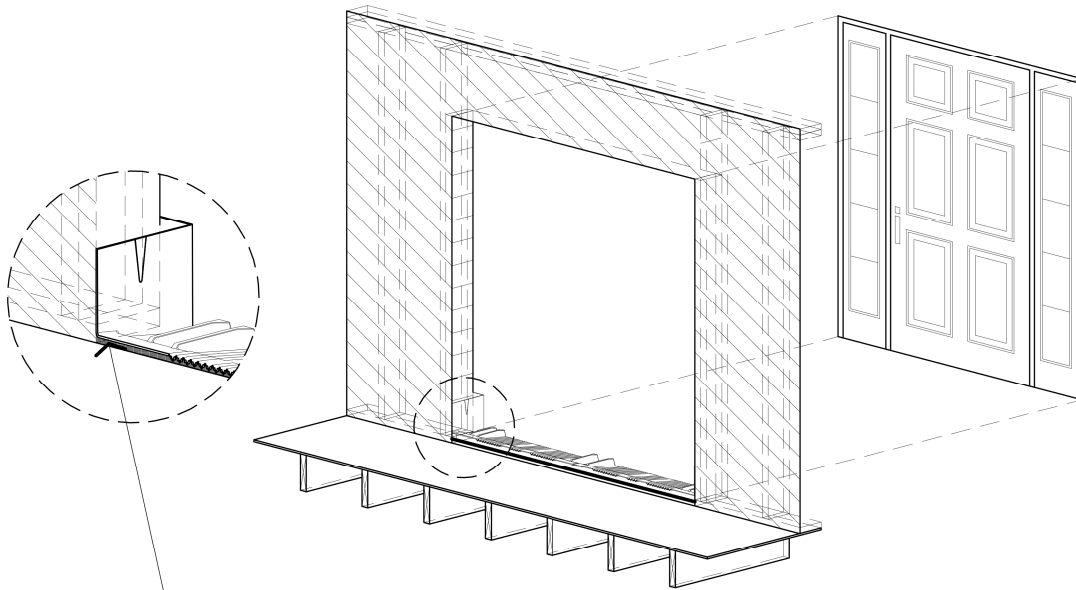
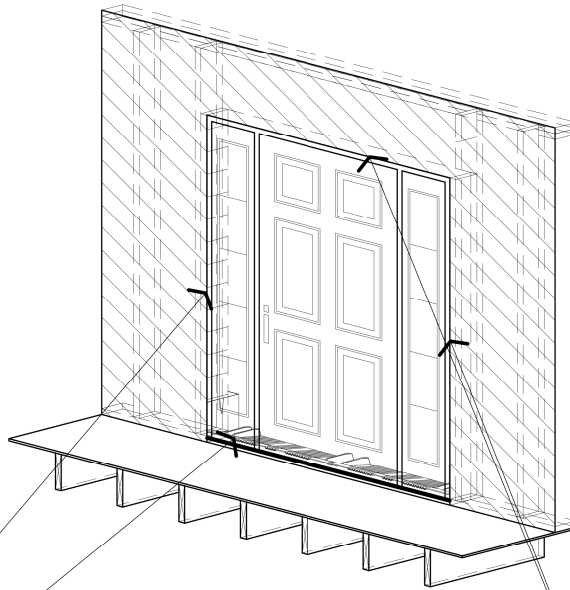




# DOOR INSTALLATION INSTRUCTIONS



1. INSTALL SiILDry PER STANDARD INSTALLATION INSTRUCTIONS.
2. FILL IN UNDERSIDE OF SiILDry WITH WINDOW/DOOR SPRAY FOAM.



1. INSTALL DOOR PER MANUFACTURER'S INSTRUCTIONS.
2. INSTALL SEALANT BETWEEN DOOR AND SiILDry.
3. FILL IN DOOR SIDES AND HEAD WITH WINDOW/DOOR SPRAY FOAM