



Quarterly Newsletter: Spring 2021



NEW APPLICATIONS

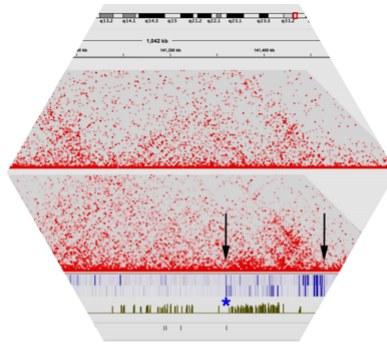


NEW FEATURES

NEW APPLICATION NOTE

DISCOVER MORE
METABOLIC FEATURES
WITH PROXIMITY-GUIDED
METAGENOME DECONVOLUTION

NEW PUBLICATIONS



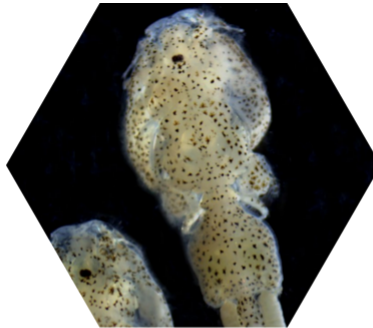
Differential Expression of α , β , and γ
Protocadherin Isoforms During
Differentiation, Aging, and Cancer



Genome sequence of *Monilinia
vaccinii-corymbosi* sheds light on
mummy berry disease infection of
blueberry and mating type



Gene flux and acid-imposed selection are the main drivers of antimicrobial resistance in broiler chicks infected with *Salmonella*



Chromosome-scale genome assembly of the sea louse *Caligus rogercresseyi* by SMRT sequencing and Hi-C analysis



A Reference Genome Assembly of American Bison, *Bison bison bison*



Improved *Spirodela polyrhiza* genome and proteomic analyses reveal a conserved chromosomal structure



Chromosome-level genome assembly of *Ophiorrhiza pumila* reveals the evolution of camptothecin biosynthesis



Tracking Reservoirs of Antimicrobial Resistance Genes in a Complex Microbial Community Using Metagenomic Hi-C

MORE PAPERS

Have a project in mind?

Contact Us

Phase Genomics, 1617 8th Ave N, Seattle, Washington 98109, United States, 833-742-7436

[Unsubscribe](#)

For research purposes only, not for clinical or diagnostic use.