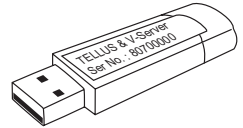


# SOFT MONITOUCH TELLUS USB Licence Key OPERATING INSTRUCTIONS

## USB Licence Key

Thank you for purchasing the SOFT MONITOUCH TELLUS USB License Key. There are three types of licences as follows. Make sure that the delivered unit conforms to your requirement.

Types	Functions
TELLUS-HMI USB key	TELLUS (HMI Mode)
TELLUS-Remote USB key	TELLUS (Remote/HMI Mode)
TELLUS & V-Server USB key	V-Server、TELLUS (Remote/HMI Mode)*



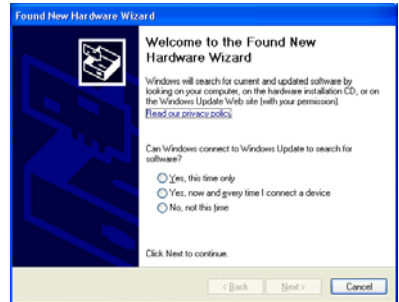
\* Available only when V-Server and TELLUS are installed in the same personal computer.

- Inserting the USB key to a personal computer makes it possible to use all functions of the TELLUS or V-Server by setting. If the USB key is not inserted, you can use it with some limitations as a trial period.
- You must purchase one set of USB key for each computer in principle.

## Applicable Version

SOFT MONITOUCH TELLUS(V3) Ver. 3.1.0.0 or later  
 SOFT MONITOUCH TELLUS(V2) Ver. 2.2.42.0 or later  
 V-Server Ver. 3.1.0.0 or later

- \* When you insert the USB key to a personal computer before the TELLUS or V-Server is installed, the menu shown right is displayed. You must install the software before inserting the USB key.
- \* When updating the software, the license information remains available.



## How to Use

1. Check that the SOFT MONITOUCH TELLUS is installed on your computer. If it is not installed, install the "SOFT MONITOUCH TELLUS" from the "SOFT MONITOUCH TELLUS and V-Server" (or our website). For details, refer to the "Installation Instructions" attached to the "SOFT MONITOUCH TELLUS and V-Server".
2. Insert the USB key to a personal computer.
3. Start TELLUS or V-Server.

 **Hakko Electronics Co., Ltd.**

890-1, Kamikashiwano-machi, Hakusan-shi, Ishikawa, 924-0035 Japan  
 Sales TEL +81-76-274-2144 FAX +81-76-274-5208