

DATAFUSION USER GUIDE: CLOUD

PREPARED BY ANTHONY COUNDOURIS
AND REVIEWED BY SAMEER SYED

NOVEMBER 2021

CLOUD VERSION 2.1



DataFusion





DataFusion

Step 1

Create a Non-Interactive Account

Step 2

Create a process in the TM1 instance (in which you wish to establish connection) and add below code in prolog tab

AddClient('CAMID("LDAP:u:uid=<<xxxx>>,ou=people")'); Please note replace <<xxxx>> with non-interactive account name

Step 3

Assign the non-interactive account as Admin in TM1 instance

Step 4

Execute the exe file, in some cases it may take a short while to appear while instantiating the Flask server. Once up it opens in your default web browser as shown below

DATAFUSION LINK GENERATOR

Server IP Address HTTP Port Number

User Name Password

Select Mode ▼

Select Method ▼

PowerBI and Qlik ▼

GET LINK

The Link

IBM DataFusion



Step 5

Server Section: First 2 boxes are for server details of TM1 instance such as IP Address and Port Number (HTTPPortNumber present in the tm1s.cfg)

Example: Consider SData (TM1 instance) which is hosted inside local machine hence

IP Address is “<https://xxxxxx.planning-analytics.ibmcloud.com/tm1/api/xxxx/api/v1/>”

Port Number is [blank](#)

Please note, replace xxxxxx as IBM cloud server name and replace xxxx as HTTPPortNumber

https://xxxxxx.planning-anal	HTTP Port Number
---	------------------

Step 6

User Section: Next 2 entry boxes are for TM1 user Authentication, Username and Password.

Example: Please input the non-interactive for username and password

admin
-------	-------

Step 7

Select Mode: If the TM1 instance is in cloud please select Cloud.

Select Mode	▼
Base	
Cam	
Cloud	

Step 8

Select Method: This gives flexibility to extract the Data/Metadata with existing view choice and extract Data Hierarchy

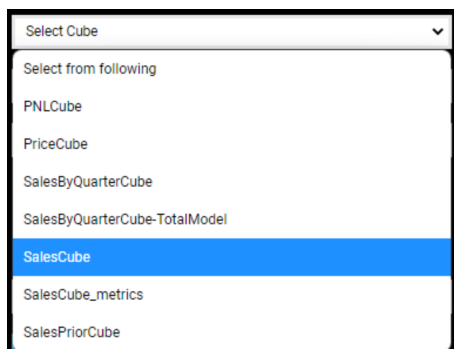
Example: Selecting View, which enables the Cube and view details for future selection

Select Method	▼
Select from following	
View	
Private View •	
Control Cube View	
Dimension Hierarchies	
Control Dimension Hierarchies	



Step 9

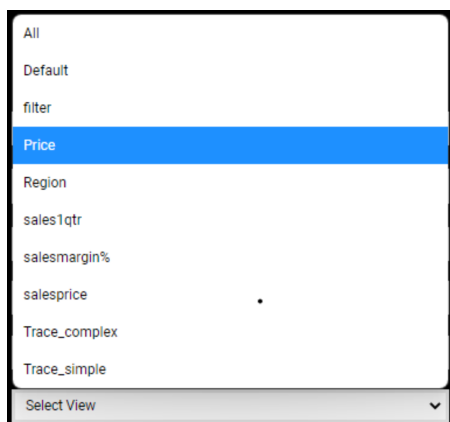
Select Cube: It gives the list of cube details present in the SData instance. Choose the Cube for which the data needs to be pushed to Power BI/Qlikview. Selection also enables the Dimension attribute details for alias choice

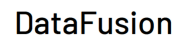


Step 10

Select View: List out the View details present in the selected cube

Example: Listed all views present in SalesCube, selected Price





Selecting alias, this section is to help to get alias for dimension elements present in the cube.

actvsbud

Caption

region

model

account1

month

Suppress Zero: Can select suppress zero if it's not done in View

Select the visualization tool for exporting link

GET LINK: will generate the link that need to paste in POWER BI / Qlikview tool. Fetch the data from TM1 to Power BI/Qlikview dashboard

datafusion.octanesolutions.com.au



DataFusion

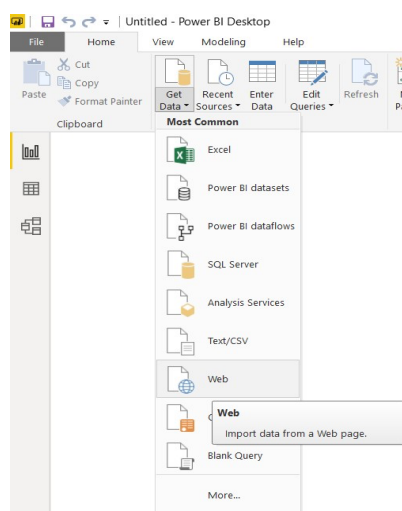
Step 15

COPY LINK: To Copy link



Open Power BI Desktop

Select Get Data -> Web



Paste the copied link from the web

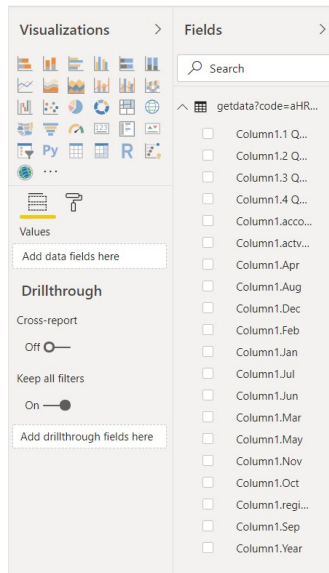




DataFusion

Power BI - Power Query Editor

It opens the power query editor on successful fetching of data from TM1. Convert to table and you are ready to use data for Dashboarding



If new request needs to be made, then go back to the Web page. Click on START AGAIN button, which reset the page and ready for new request.



Once everything is done, click on STOP SERVER. Which kills the python code running on Background and prepare web browser for close

