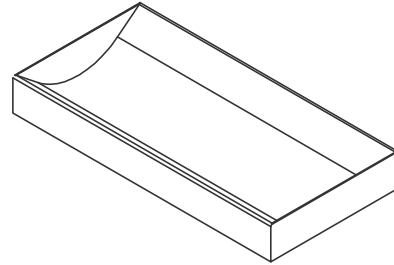


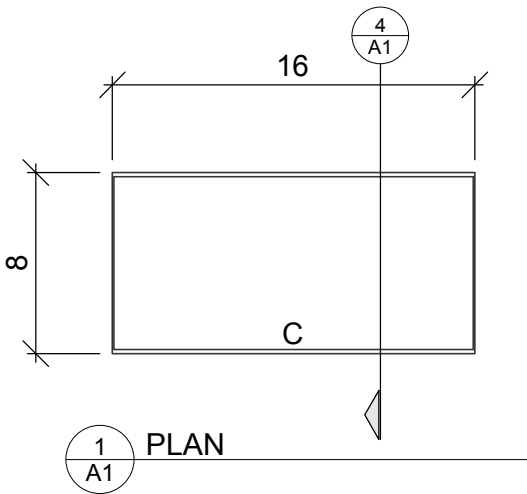
FEATURES

- Wide range of sizes available
- Welded stainless steel construction
- No exposed fasteners
- Easy installation

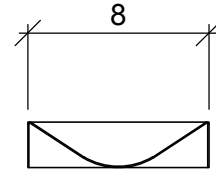
COUNTER MOUNT CASH TRAY



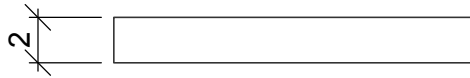
3 ISOMETRIC VIEW



1 PLAN



4 SECTION



2 ELEVATION

STANDARDS

The deal tray is easily installed on existing counters. The tray is constructed of 18 GA Stainless steel with a #4 brushed satin finish, all joints welded and ground smooth.

- No counter cut out required
- Brushed stainless steel finish

SIZES

- 12" x 8" x 2"
- 14" x 8" x 2"
- 14" x 10" x 1 1/2"
- 16" x 8" x 2"
- 16" x 10" x 1 1/2"
- Custom sizes available.