

Digital AV Broadcast System for Schools MV-500T / MV-500R Setup Guide

Thank you for purchasing MV-500T (transmitter) / MV-500R (receiver).
This document describes how to configure MV-500T / MV-500R to establish a digital AV broadcast system at school.

silex technology English

WA106770XA

What is "SX Smart Manager Pro for MV-500" ?

"SX Smart Manager Pro for MV-500" (hereinafter, "SX Smart Manager") is the device management software that can remotely monitor the device status over an IP network, and that can be used for initial configuration and operation management for a digital AV broadcast system at schools.
This document describes how to create a configuration file using SX Smart Manager and how to use it for initial configuration.

After SX Smart Manager is installed to the PC, the PC needs to be placed in the same LAN as MV-500T/MV-500R. SX Smart Manager will need to communicate with MV-500T/MV-500R to get the setting information that is necessary to create or edit the configuration file.

*** Please acquire the user name and license key for SX Smart Manager from Silex Technology's website. Remember that it takes a few days to complete the license registration.**

Supported OS
Windows 10 (32bit/64bit)
Windows 8 (32bit/64bit)
Windows 7 (SP1 or later, 32bit/64bit)
Windows Vista (SP2 or later, 32bit/64bit)
Windows XP (SP3 or later, 32bit)

* In this document, Windows 10 is used as an example.

Notes on microSD Card

Prepare a microSD card for saving the contents in order to use **the program pre-distribution function** that can play the contents using MV-500R (the receiver) only. The microSD card needs to be inserted into the card slot of MV-500R.

Supported media	micro SD, micro SDHC
Memory size	micro SD: Maximum 2GB, micro SDHC: Maximum 32GB
File system	FAT, FAT32
Partition	Only 1 partition is supported
Insertion/Removal while the device is active	Not allowed

* The microSD card does not come with MV-500T/MV-500R. Please purchase it separately.

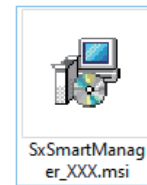
Step 1

Before You Begin

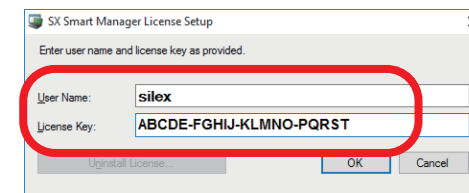
1-1. Installing SX Smart Manager to PC

Install SX Smart Manager to the PC to use for configuration.

1 Insert the CD-ROM "SX Smart Manager Pro for MV-500" to the PC and execute **SxSmartManager_XXX.msi**.



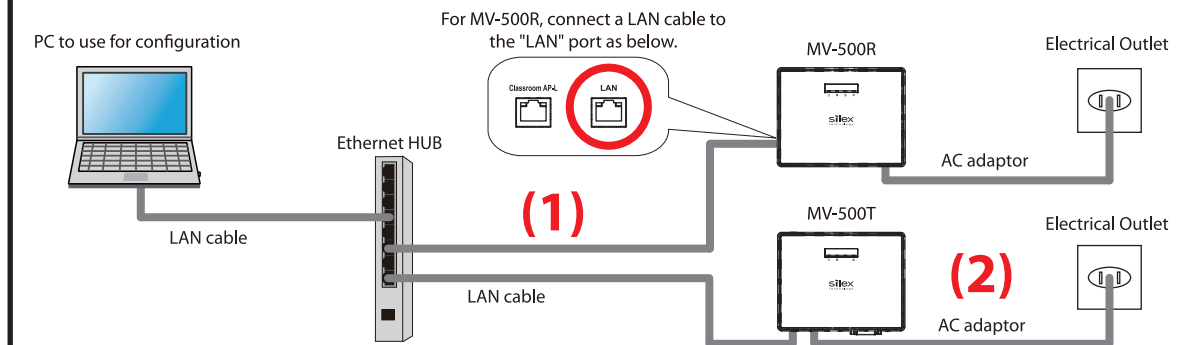
2 Follow the instructions on the screen. When the license information screen appears, enter the user name and license key for SX Smart Manager.



* Please enter the user name and license key that you have acquired from Silex Technology's website.

1-2. Connecting PC and MV-500T/MV-500R in the same network

Connect MV-500T (transmitter)/MV-500R (receiver) to the same network as the PC using an Ethernet Hub. Connect LAN cables to MV-500T / MV-500R (1), and insert the AC adaptors of MV-500T / MV-500R to the power outlet (2). As MV-500T/MV-500R are used only for acquiring the setting information, the display or video source player does not need to be connected.



* When a static IP address is assigned to the PC, temporarily enable **Obtain an IP address automatically** on the PC.

Configuration Procedure

Step 1 Before You Begin



Step 2 Installation and Configuration

Necessary Items

Prepare the following items for [Step 1 Before You Begin].

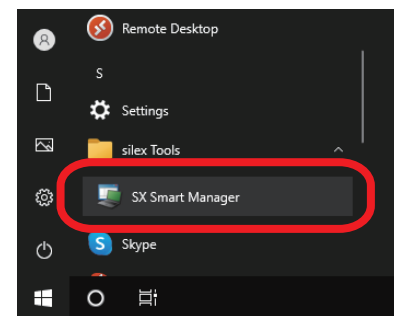
- MV-500T (transmitter) x 1 unit
- MV-500R (receiver) x 1 unit
- CD-ROM for SX Smart Manager Pro for MV-500 (this comes with MV-500T)
- License for SX Smart Manager (user name, license key)
- PC to use for configuration (SX Smart Manager Pro for MV-500 should be installed)
- LAN cable
- Ethernet HUB (not necessary when the existing network is used)

Prepare the following items for [Step 2 Installation and Configuration].

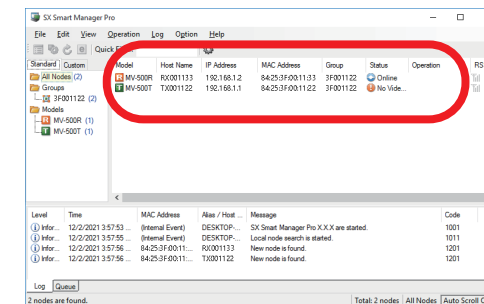
- MV-500T (transmitter)
- MV-500R (receiver)
- PC to use for configuration (SX Smart Manager Pro for MV-500 should be installed)
- LAN cable
- Display
- HDMI cable
- Video source player (PC, video camera, etc. with a DVI output)
- DVI cable
- Audio cable
- microSD card (necessary when using the program pre-distribution function)

1-3. Creating Configuration File

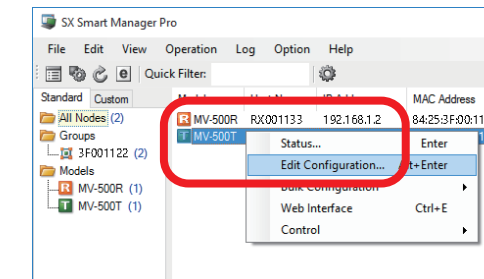
1 From the start menu on the PC, click **silex Tools - SX Smart Manager**.



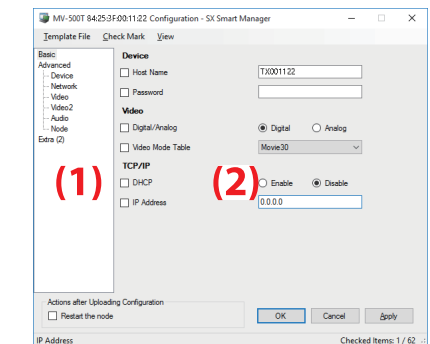
2 SX Smart Manager starts and shows a list of the MV-500T/MV-500R units that are connected to the same LAN as the PC.



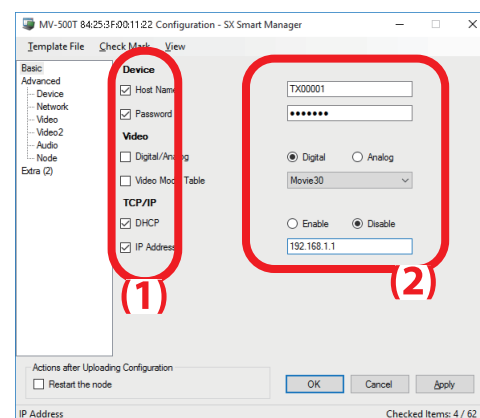
3 Create a configuration file for MV-500T/MV-500R that will be installed to the school. Select MV-500T to create the configuration file for transmitters, or MV-500R to create the configuration file for receivers, and select **Edit Configuration** from the right-click menu.



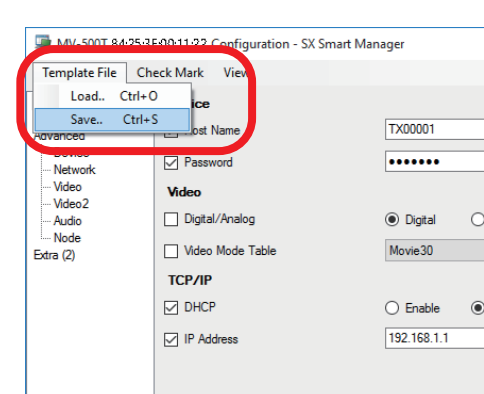
4 The configuration screen for the selected product is displayed. Clicking the configuration category on the left (1) will display the setting items on the right (2).



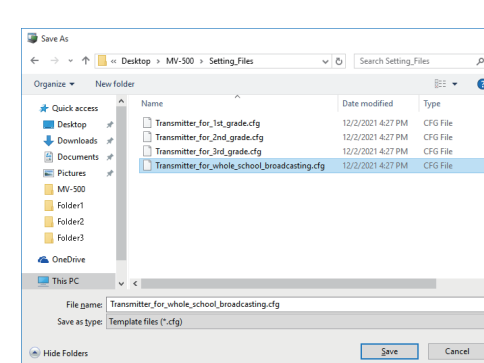
5 Check the check boxes of the setting items to configure for MV-500T/MV-500R (1) and enter the values (2).



6 Select **Template File - Save** from the menu.



7 The file save dialog is displayed. Enter the file name and click **Save**.



After the configuration file is saved, the screen of **4** is displayed again.

- To create the configuration file for the same product, repeat **4-7** to create as many configuration files as needed.

- To change the product model to create the configuration file for, click **Cancel** to close the configuration screen. Start from the screen of **2**.

- When the required number of configuration files for MV-500T/MV-500R are created, click **X** (close button) at the top right of the screen to close the configuration screen. When the screen of **2** is displayed, select **File - Exit** to exit SX Smart Manager. Turn off MV-500T/MV-500R units that you have used to create the configuration file.

Customer Support Center

If you have any questions, please contact us at the following.

Customer Support Center information

E-mail	
USA	support@silexamerica.com
Europe	support@silexeurope.com

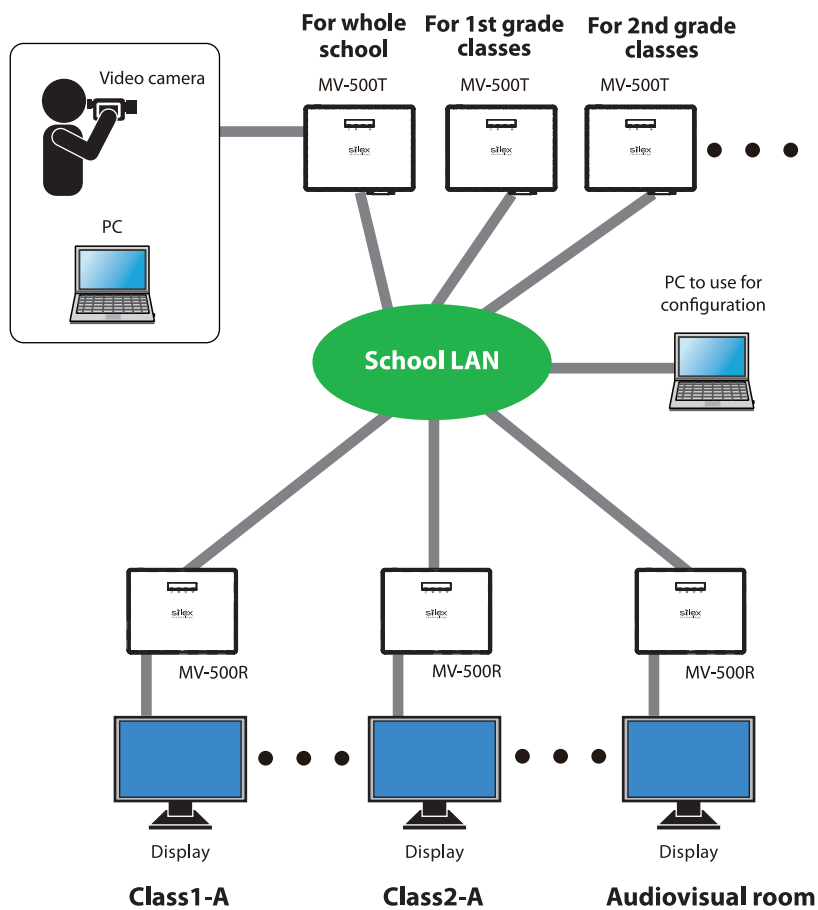
URL: <https://www.silextechnology.com/>

Go on to Step2 in the back

Step 2

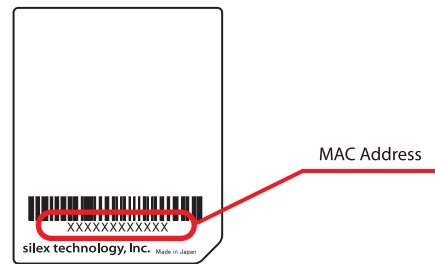
Installation and Configuration

Install and configure MV-500T (transmitter) / MV-500R (receiver) to create a digital AV broadcast system in the school.
As shown in the connection image below, install them to classrooms and connect them to the school LAN.

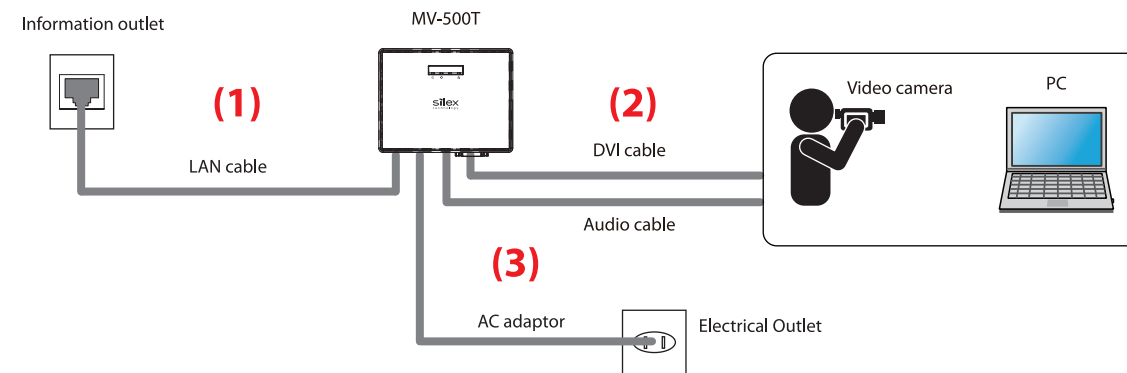


2-1. MV-500T (Transmitter) Installation

1 Check the MAC address of MV-500T to install. The MAC address is noted on the bottom label of MV-500T. Make a note of the MAC address and installation location of MV-500T, as it will be needed during the configuration explained at "2-3. Configuration Using Configuration File".

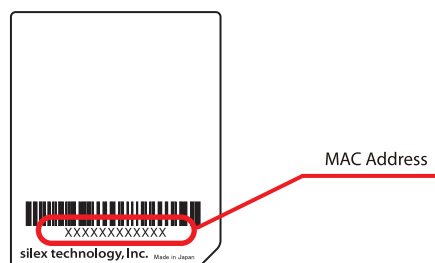


2 Connect MV-500T to the information outlet of the school LAN using a LAN cable (1). Connect MV-500T to a video source player (e.g. video camera, PC) using a DVI cable and audio cable (2). Connect the AC adaptor to MV-500T and the plug to the power outlet (3).

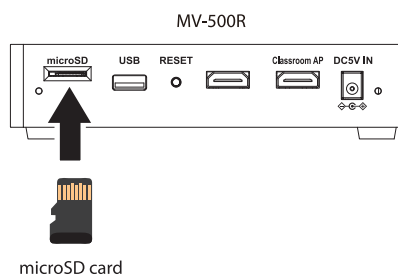


2-2. MV-500R (Receiver) Installation

1 Check the MAC address of MV-500R to install. The MAC address is noted on the bottom label of MV-500R. Make a note of the MAC address and installation location of MV-500R, as it will be needed during the configuration explained at "2-3. Configuration Using Configuration File".

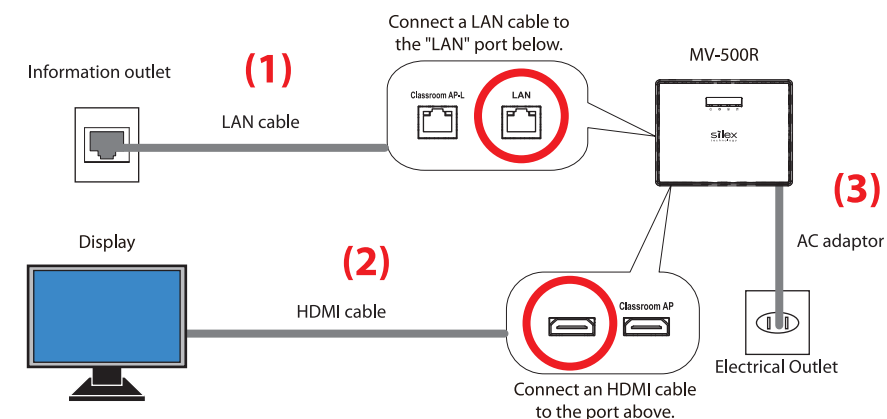


2 When using the program pre-distribution function that plays the contents using MV-500R only, insert a microSD card to save the contents. The microSD card should be inserted into the card slot of MV-500R as shown below.



* The microSD card does not come with MV-500R. Please purchase it separately.

3 Connect MV-500R to the information outlet of the school LAN using a LAN cable (1). Connect MV-500R and a display using an HDMI cable (2). Connect the AC adaptor to MV-500R and the plug to the power outlet (3).

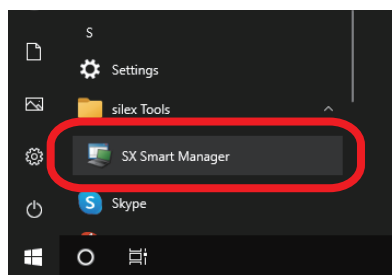


2-3. Configuration Using Configuration File

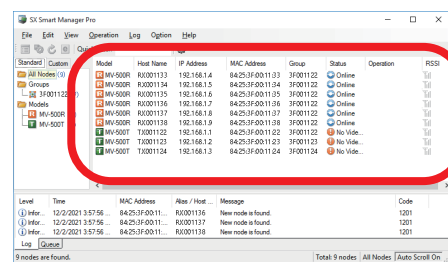
NOTE

When SX Smart Manager is not installed to the PC, install it first. For details on the installation, refer to 1-1. Installing SX Smart Manager to PC.

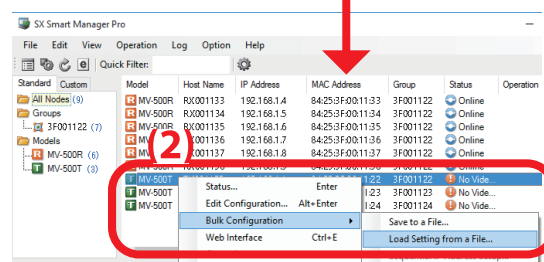
1 On the PC connected to the same LAN as MV-500T/MV-500R, select **SX Smart Manager** from the start menu.



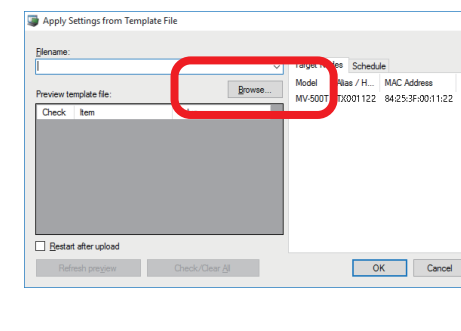
2 SX Smart Manager starts and shows the list of the connected MV-500T/MV-500R units.



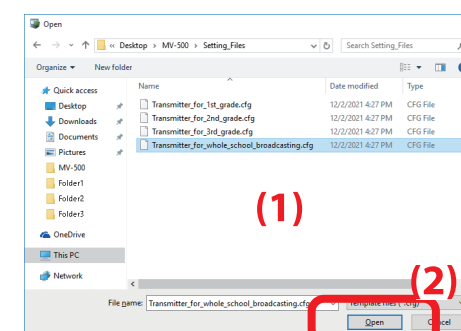
3 Find the MV-500T/MV-500R unit to configure from the list by identifying with the MAC address that you have confirmed during the installation (1). Select it and click **Bulk Configuration - Load Setting from a File** from the right-click menu (2).



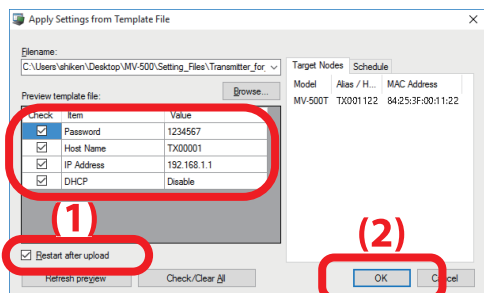
4 The configuration load screen appears. Click **Browse**.



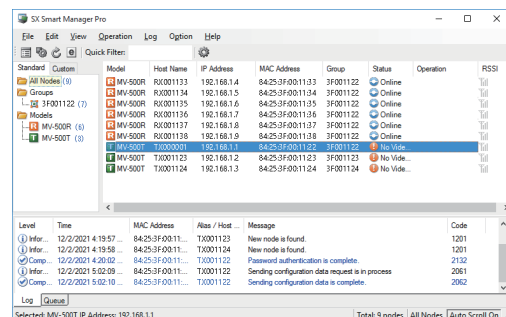
5 The file selection dialog appears. Select the configuration file that you have created at Step 1 Before You Begin (1), and click **Open** (2).



6 The setting information of the selected file is displayed. Check the items to configure, and confirm that the **Restart after upload** check box is checked (1), and click **OK** (2).

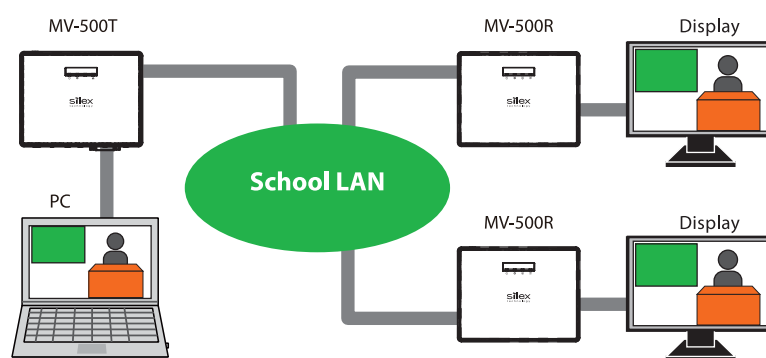


7 The MV-500T/MV-500R unit is configured with the selected file and is restarted automatically. The new settings will take effect after the restart.



The configuration is completed. Repeat 3 - 7 for all MV-500T/MV-500R units to use at the school.

8 The installation and configuration are completed. Play the content from the PC, video camera, etc. connected to MV-500T. It will be played on the displays connected to MV-500R units.



Notice to US Customers



FCC CAUTION

Changes or modifications not expressly approved by the party responsible for compliance could void the user's authority to operate the equipment.

FCC Rules Part 15 §15.19(a)(3)

This device complies with Part 15 of the FCC Rules. Operation is subject to the following two conditions:

- (1) This device may not cause harmful interference, and
- (2) this device must accept any interference received, including interference that may cause undesired operation.

FCC Rules Part 15 Subpart B §15.105(a)

Note: This equipment has been tested and found to comply with the limits for a Class A digital device, pursuant to part 15 of the FCC Rules. These limits are designed to provide reasonable protection against harmful interference when the equipment is operated in a commercial environment. This equipment generates, uses, and can radiate radio frequency energy and, if not installed and used in accordance with the instruction manual, may cause harmful interference to radio communications. Operation of this equipment in a residential area is likely to cause harmful interference in which case the user will be required to correct the interference at his own expense.