

Pilbara Meta Maya Group of Companies

Unit 5, 78-84 Catalano Circuit,
Canning Vale WA 6155
(08) 9455 7441
www.metamaya.com.au

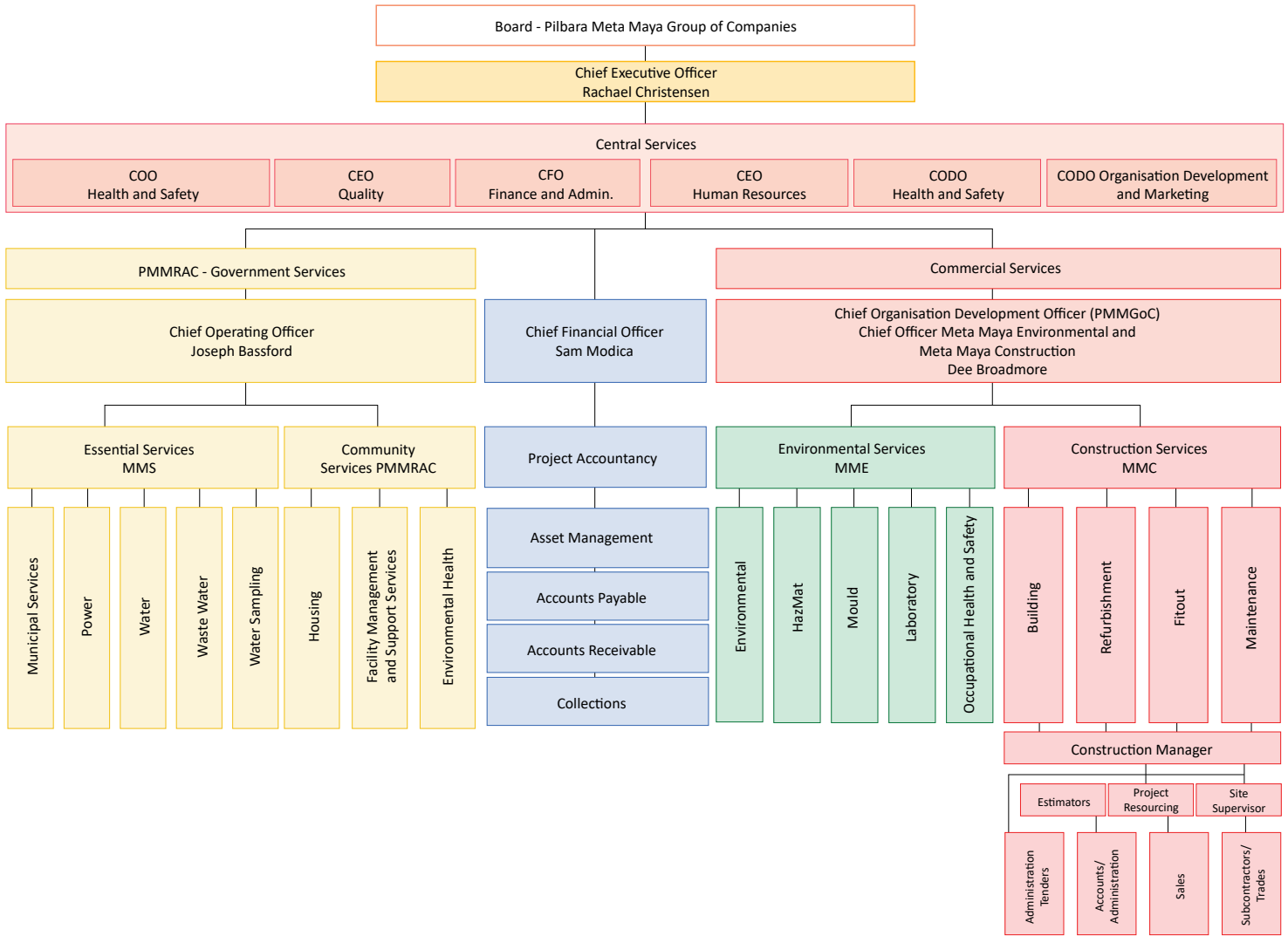


META MAYA CONSTRUCTION PTY LTD

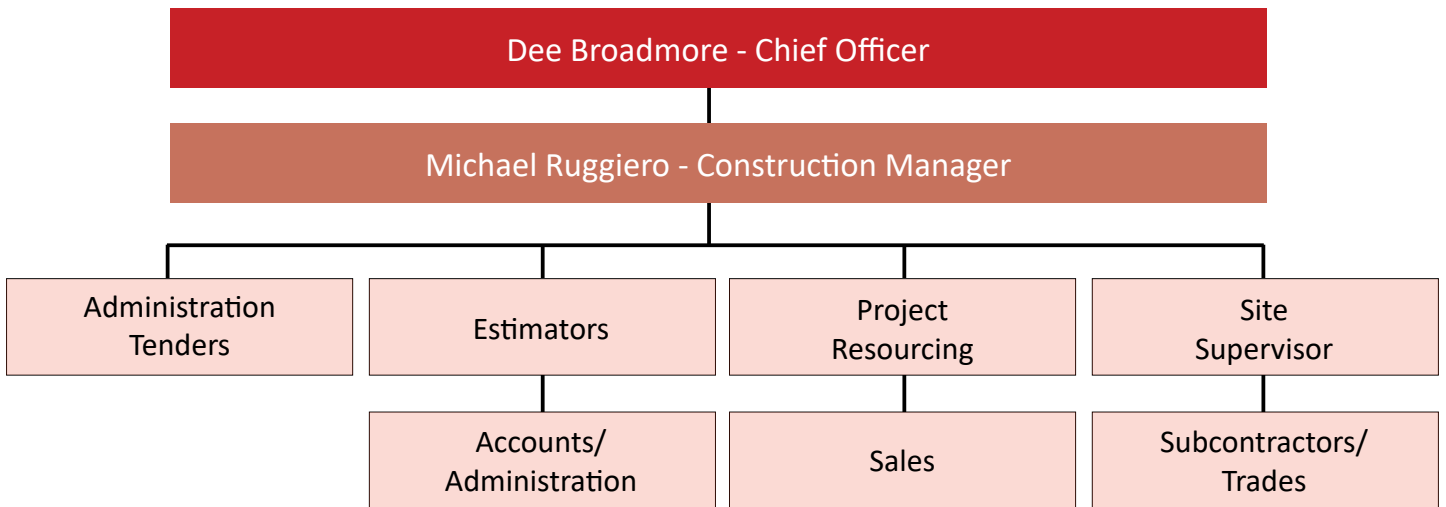
Capability Statement



Company Organisational Chart



Construction Management Chart



Contents

Organisational Charts	2
Contents	3
About Meta Maya Construction	4
Why Meta Maya Construction?	5
Our Services	6
Construction	7
Client Industries	8
Corporate Responsibilities	9
Management Systems	11
Our Team	12
Sample of Experience	13
Our Values	15



Builders Registration
No. 102166

ABOUT META MAYA CONSTRUCTION

Meta Maya Construction Pty. Ltd. (MMC) is based in Perth but through services delivered maintain a national client base. MMC was formed by acquiring a niche construction business and is aligned with Meta Maya Environmental (MME) based in Perth.

MMC is focussed on providing tailored solutions to clients from a comprehensive range of construction services. This Capability Statement addresses the Construction business unit.

The Pilbara Meta Maya Group of companies have been delivering services around properties for over 20 years. MMC have personnel in excess of 25 years in the industry, trades personnel and a trade contractor network to complement.

MMC's construction portfolio delivers services around, new builds, refurbishment, property fit-outs, site management and maintenance.

MMC's project teams are staffed by experts within their respective fields who are passionate about what they do and believe in "quality within value". MMC offer a diverse range of complementary client focussed services across multiple disciplines adding value at every stage.

Our Vision is to be a sustainable organisation ensuring our people and our clients have a positive and secure future.

Our Mission is focussed on providing tailored solutions to clients from a comprehensive range of services. We do this by offering expert, impartial advice that provides superior solutions across our portfolio of service which meet client expectations as well as regulatory and environmental requirements.

WHY META MAYA CONSTRUCTION



Approval Process

MMC can help you, to navigate Statutory Approvals and complex Regulations. We will provide detailed plans, superior supervision and facilitation.

Design and Concept

MMC's diverse industry knowledge, practical know how and experience will ensure your vision is brought to life from conception to project completion. Guiding you through the project and ensuring we fully understand your business requirements. No two jobs are the same and we embark on each new project with fresh ideas and concepts.

Construction

Our experienced team are committed to ensuring your project is handled with the highest level of importance and will work within the controlled parameters set. You can be assured of accurate, credible and reliable information in a timely manner. Repeat clients are evidence of our demonstrated ability to provide exceptional service.

Site Management

Our team will manage strict deadlines and prioritise tasks to enable an effortless transition from project commencement to completion. Continual communication with key stakeholders and exceptional organisation will see your dealings with MMC trouble free.

Project Management

Highly organised staff and an accomplished and qualified Project Management team are what we base our service quality on. The team are available to you throughout the construction process to update you on the status of the project. Our Project Managers think on their feet and resolve issues professionally and innovatively to ensure the smooth running of each project.

Maintenance

MMC has a substantial maintenance team and a network of trades across Australia. Service Level Agreements are put in place to ensure timely responses.

"Original thinking... Infinite possibilities"

OUR SERVICES

The experienced and professional construction team at MMC can supply services in the following areas: Commercial new builds; Heritage refurbishment works; Building insurance works; Fire Damage works; Asbestos Remediation; Inspections on buildings (dilapidation) electrical, and compliance.

The construction team also has many years' experience in property fit outs including over the last 10 years, Bars, Restaurants, Nightclubs, Cinemas, Shops, Hotels and Offices etc.

MMC is very motivated towards client satisfaction and is able to assist clients with their property related issues in a more holistic fashion. MMC keep lines of communication clear and simplify a sometimes overcomplicated process.

MMC assists clients through the process of construction i.e.

- Initial scope
- Design and concept
- Approval process
- Construction
- Project management at every stage
- Site management to include safety requirements
- Handover and reporting
- Maintenance

Communication is key to client satisfaction and MMC takes pride in ensuring that our team maintains open communication, sign off on project stages, where appropriate, and that there is complete transparency with regard to the project and its costings.

MMC has a substantial maintenance team and a network of trades across Australia. Service Level Agreements are put in place to ensure timely responses. MMC also has a Strategic Alliance with a Facilities Management Company, that work with a matching ethos to MMC so managing your properties has never been easier.

Client Industries:

MMC operates across Australia providing key personnel to industries such as:

- Government
- Private Sector
- Commercial Industry
- Medical Facilities
- Mining Industry

CONSTRUCTION

Services

- Design and Construct
- General Building works
- Building Insurance works
- Drafting and design works
- Office Fit-outs and Refurbishments
- Building Inspections (Dilapidation - Maintenance)
- Civil and Earthworks

Construction types

- Tilt panel construction
- Brick and concrete construction
- AFS construction
- Modular buildings
- Steel frame construction
- Timber frame construction

Complex Projects

- Complex client/stakeholder interactions
- Phased/Staged work programs
- Building in operational and secure environments
- Regional and remote project work
- Mine site works
- Port works

Maintenance

- All general building maintenance works
- Roof renewal and restoration
- 24hr call out service
- Fully qualified trades
- Operational compliance and Risk Management

Construction - Build

- Office Refurbishments
- Showrooms
- Education facilities



- Medical facilities
- Sporting complexes
- Warehouses
- Retail Stores
- High rise buildings
- Medium rise buildings
- Low rise buildings
- Apartments
- Sub-divisions and community centres
- Regional housing solutions
- Emergency housing solutions
- Heavy industrial factories
- Commercial construction projects
- State and Federal construction projects
- Hotels
- Community buildings
- Entertainment venues
- Fit-outs

“Innovation from the ground to the sky”



CLIENT INDUSTRIES

MMC operates across Australia providing key personnel to industries such as:

MINING AND EXPLORATION

- Rio Tinto
- BHP

CONSTRUCTION AND INDUSTRY

- Thuroona Services
- BP
- Plan it ECO Property Development
- Fit-outs

EDUCATION

- Curtin University
- Public Schools
- Murdoch University

REAL ESTATE

- Ray White

GOVERNMENT

- Main Roads WA
- Department of Housing
- Department of Communities
- City of Perth
- City of Rockingham
- City of Joondalup
- City of Fremantle
- City of South Perth
- Shire of Northam
- Department of Finance
- Hospitals
- Department of Biodiversity, Conservation and Attractions
- Department of Health

“Making your concepts reality”

CORPORATE RESPONSIBILITIES

Quality Assurance Policy

The Pilbara Meta Maya Group of Companies deliver accurate results every time by adhering to robust quality assurance Policy and Procedures via an Integrated Management System.

Our aim is to be a recognised leader in the services we provide by meeting the stated and implied needs of our Clients. We attach great importance to quality management and the services we provide must reflect a high degree of Client satisfaction. We undertake regular audits to provide these services, which in all respects must meet or exceed our Client's expectations for quality, safety, timing and budget. To ensure these aims are met, we have established and maintain a quality system which has been planned, developed and is used by all employees in conjunction with other management functions. The quality system has been implemented and is constantly monitored and upgraded.

We have developed measurable objectives which are periodically reviewed to ensure the continuous improvement of our systems. All members of staff are required to be fully conversant with the quality system and the associated procedures and instructions relevant to their work and to be responsible for the quality of all work they produce.

This policy is used to clearly communicate our attitude with regard to quality and recognises that this commitment is essential to our long term success with regard to our competitive position, our reputation, our Clients and our people.





CORPORATE RESPONSIBILITIES

Environmental Policy

We operate our Environmental Management Systems (EMS). We continually evaluate our activities to ensure they are in-line with our EMS Policy and are working to reduce our environmental impact.

The EMS Policy is empowered by all staff and is endorsed by the Board and Directors ensuring that EMS is maintained and is present in everything we do. All employees and sub-contractors are educated on our EMS policy ensuring that all are aware of the importance of their compliance and the individual's responsibility in conforming to the policy.

Safety Policy

We are committed to Health, Safety and the Environment (HSE), providing a safe and healthy workplace for all of our workers. We recognise our responsibility to provide a safe and healthy working environment for all contractors, clients, visitors and the public ensuring our safety management system is represented on site for each project.

The HSE policy is relevant in everything we do, taking a systematic approach to identifying, assessing and controlling all health and safety risks and hazards.

Management have direct involvement and are committed to the 'commit-plan-do-check-review' method, ensuring policies are developed to ensure all operations conducted by employees and contractors are in accordance with relevant legislation, regulatory requirements and industry standards.

Contact us for a copy of our environmental and Safety Policy or download it now from our website www.metamaya.com.au

MANAGEMENT SYSTEMS

Our Systems

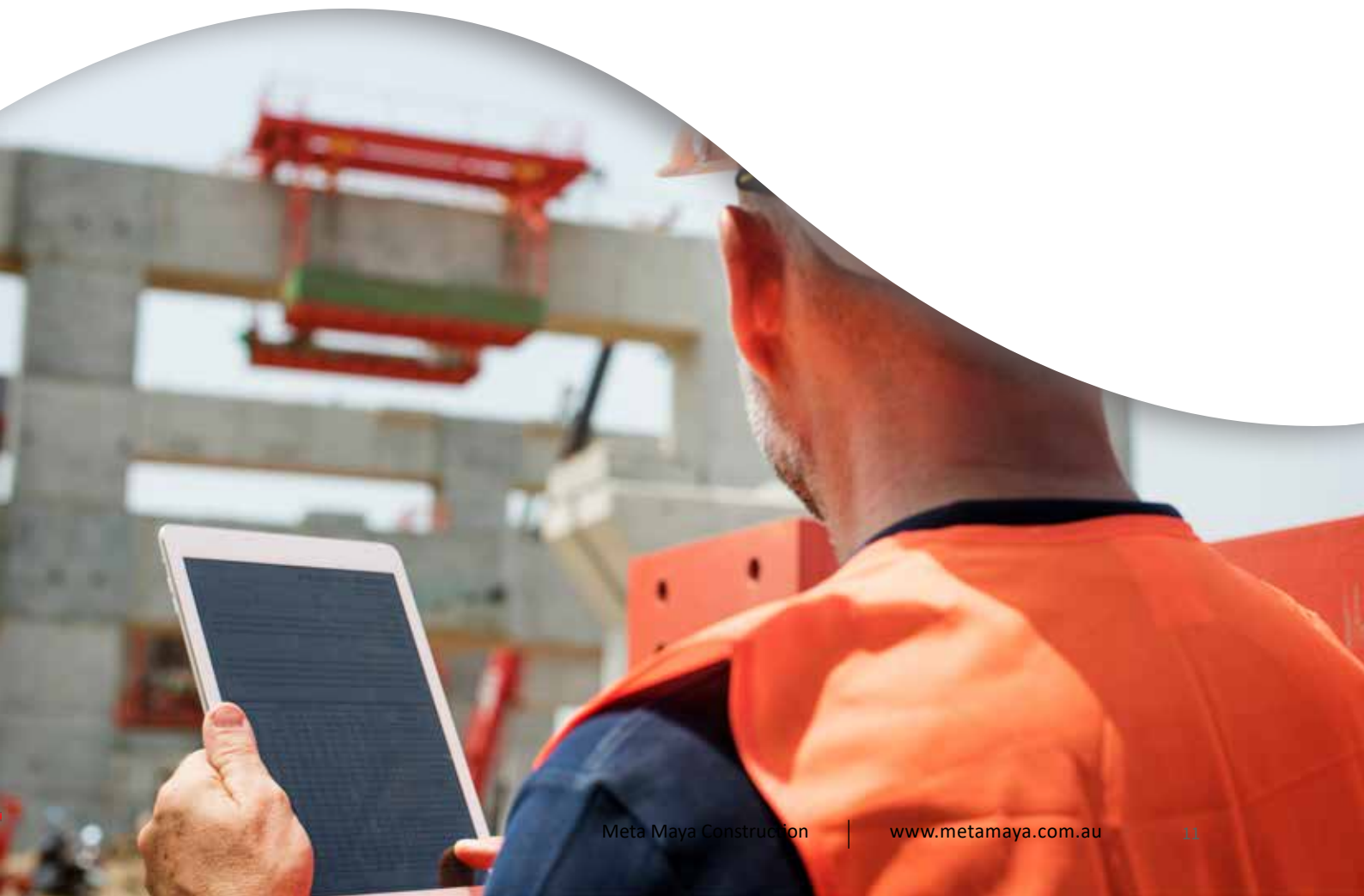
We have management systems in place for both internal and external staff. By having these systems we can ensure that all employees and services are operating safely and efficiently.

The majority of our work force is sourced in-house. The personnel that are outsourced undergo an accreditation process to evaluate their suitability to our ethics and key performance indicators. The Pilbara Meta Maya Group of companies effective management systems are demonstrated by the commitment and direct involvement of all employees at all levels of the company.

We operate with a 'hands on' approach towards management adopting an effective 'two-way communication' method within every project. Doing this ensures clear communication throughout all levels involved and is an integral part of how we do business.

Training and education is paramount within the Pilbara Meta Maya Group of companies. Achieving high standards is ensured by having the right people in the right place. Our employees are supported, given regular training and meetings to help them progress within their roles and beyond.

"Whatever your property requirements, we've got you wrapped"



Our Team

The Pilbara Meta Maya Group of companies operate and are committed to high standards selecting our people and our partners very carefully. We acquire, retain and develop motivated personnel to ensure that the high levels of service we offer are maintained.

We have a team of professional managers and experienced personnel involved in delivering the services we provide and to maintain our high standards, we have invested heavily in our personnel who are all part of a committed ongoing training programme.

Our overall strategy is to focus on the delivery of end to end solutions that add immediate value to our clients. To support this high-quality service delivery we have formed relationships with proven and committed strategic alliance partners that offer niche services and solutions that complement our offerings. Our clients receive the best quality of service managed by one central contact.

Established processes ensure that the business operates effectively and efficiently. Under a strong leadership team, the focus is on excellence, health and safety and flexibility in the delivery of our services.

Business today is about diversification, good relations and partnership opportunities which reduces costs, increases efficiencies and enables business to refocus critical resources. Now is the time for you to build relationships with an Aboriginal organisation that has a range of skillsets that support your business.

Our people are what make a difference – talented professionals who add value to a client’s property from construction of a new build or refurbishment of an existing property through to management and maintenance.

BUILD - MANAGE - MAINTAIN



What differentiates us from the competition?

- CLIENT MOTIVATED
- SOLUTION FOCUSSED
- RELIABLE
- FLEXIBLE AND ROBUST
- EFFICIENT AND EFFECTIVE

SAMPLE OF EXPERIENCE

DESCRIPTION OF CONTRACT	VALUE OF CONTRACT	ROLE IN CONTRACT
Demolition of existing dwelling at Lot 1174 Holman Street Derby and Construction of 1 x 4 Bedroom Dwelling at Lot 103 Kurrajong Loop and 2 x 3 Bedroom Dwellings at Lot 1174 Holman Street Derby	\$2,400,000	Builder/head contractor
Agora on Santorini Shopping Centre in Alkimos	\$4,200,000	Builder/head contractor
Osborne Park Apartments (8 Boutique apartments)	\$3,250,000	Builder/head contractor
Yokine - Raymond Street, 3 apartments	\$1,350,000	Builder/head contractor
Cloverdale - Gabriel Street, 12 double story apartments	\$2,038,327	Builder/head contractor
Craigie - Macedon Place, 14 apartments double story	\$3,032,000	Builder/head contractor
DFO and Westfield Carousel- internal fit-outs	\$140,000	Builder/head contractor
Cape Peron Recreational Development	\$180,000	Builder/head contractor
John Tonkin Riverpark Interpretation Signage – Riverpark Node Project – Fabrication and Installation at John Tonkin Park, East Fremantle	\$190,000	Lead contractor
Kensington Vehicle Compound Development	\$434,000	Builder/head contractor
Ascot Racecourse works- Demolition and Construction of Decking and Pavilion Bar at The Grandstand, Ascot Demolition of various structures and Refurbishment of Pavilion Public Bar Area and Stands. Development Application and Building Permit was required for these works.	\$223,000	Builder-Sub-contractor
Regional Aboriginal Interpretive Centre. Joinery Graphic Ribbon, Joinery Battened Screen and Showcase Joinery	\$290,000	Contractor
A heritage restoration and fit-out of the WA Club Building on St Georges Terrace, restoring the stunning building to its original splendour.	\$1,300,000	Builder/head contractor



OUR VALUES

MMC prides itself on offering client focussed, high quality consultancy services.



INTEGRITY

MMC's talented and highly skilled personnel operate an ethos of integrity and honesty, which ensures quality, credible and robust outcomes are achieved with true impartiality. MMC personnel are open and transparent when dealing with our clients.



QUALITY

MMC maintains a Safety, quality and Environmental Management System that is robust and in line with systems already in place across the organisation.



SERVICE

MMC offers a full range of high quality construction and management services across multiple industries that are both client and solution focused.

Project Teams support clients before, during and after projects; to ensure the best solutions are delivered and client expectations are met.



RESULTS

MMC's Quality Management System requires that only qualified and experienced personnel undertake service delivery in operations. All projects are conducted in accordance with all relevant regulations, best practice, standards and codes, with complete transparency to the client.





Meta Maya Construction Pty Ltd

Unit 5, 78-84 Catalano Circuit,
Canning Vale WA 6155

(8) 9455 7441
enquiries@metamaya.com.au
www.metamaya.com.au

- 100% Australian Owned
- 25+ Years in business
- Robust integrated QSE Systems
- 90+ Personnel
- National Coverage
- Registered Building Contractor
- Master Builder Member

