

PUMPS

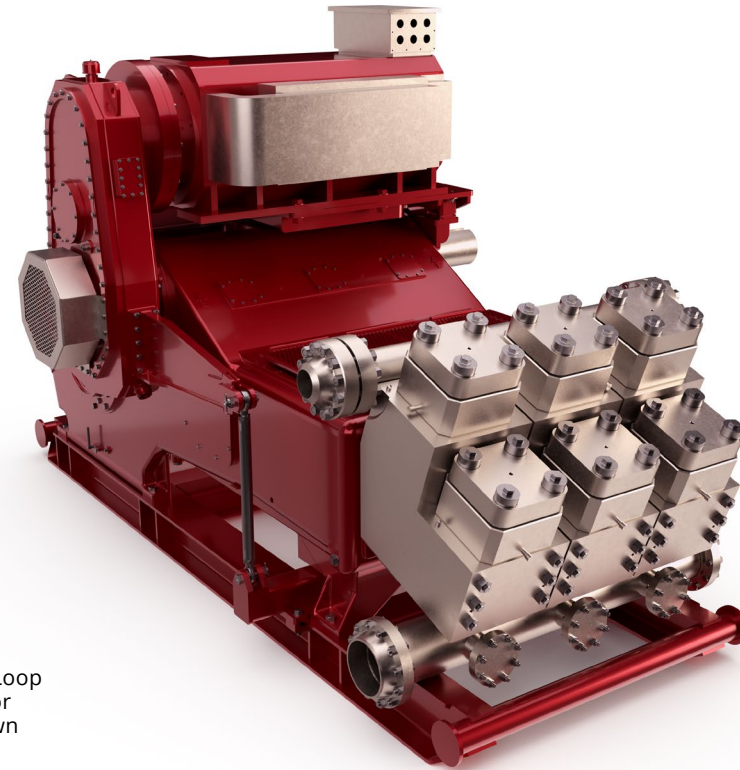


PZ 2400 DRILLING MUD PUMP

GD Energy Products' PZ 2400 is the most powerful drilling pump available today. With 10% more horsepower, 30% less weight and a smaller footprint than that of competing pumps, the PZ 2400 is the drilling pump of the future. Packaged with Redline™ Series consumables, customers can expect unmatched performance while lowering their total cost of ownership.

SPECIFICATIONS

Maximum Input	2,400 BHP (1,790 kW)
Maximum RPM	10 RPM
Stroke Length	14 in. (356 mm)
Piston Load	185,000 lbs. (822,921 N)
Pump Weight	88,000 lbs. (39,916 kg) with Top Drive Gearbox System 63,500 lbs. (28,803 kg) with skid and hydraulic tensioning system
Gear Ratio	4.033:1



*Amerimex Closed Loop Water Cooled Motor Configuration shown

PISTON CYLINDER		DISPLACEMENT - DRILLING SERVICE				MAXIMUM PSI		PUMP RPM	JACKSHAFT RPM
DIAMATER		PER REVOLUTION		MAXIMUM FLOW RATE					
in.	mm.	Gallons	Liters	GPM	LPM	PSI	bar		
9*	229	11.57	43.78	1272	4816	2908	201	110	444
8.5	216	10.32	39.06	1135	4296	3260	225		
8	203	9.14	34.60	1005	3806	3680	254		
7.5	191	8.03	30.41	884	3345	4188	289		
7	178	7.00	26.49	770	2914	4807	331		
6.5	165	6.03	22.84	664	2512	5575	348		
6	152	5.14	19.46	565	2141	6543	451		
5.5	140	4.32	16.35	475	1779	7500	517		
5	127	3.75	13.51	393	1487	7500	517		

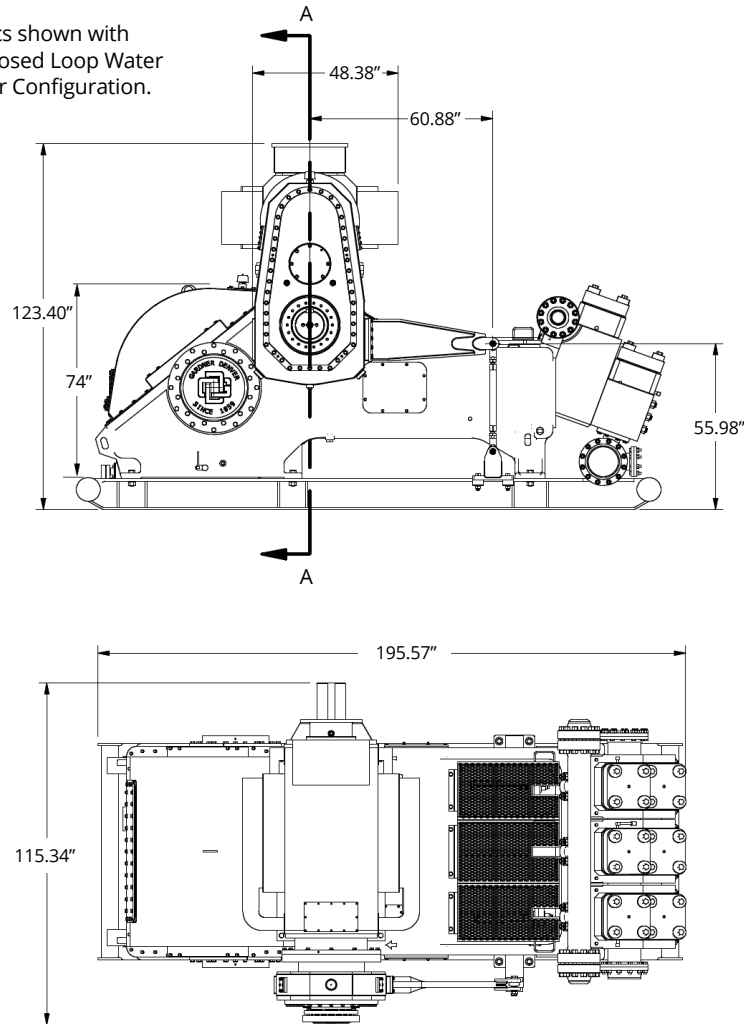
Ratings are based on 90% mechanical efficiency and 100% volumetric efficiency
*Contact GD Energy Products engineering for application review and approval

PZ 2400

DRILLING MUD PUMP

SPECIFICATIONS

PZ 2400 Specs shown with Amerimex Closed Loop Water Cooled Motor Configuration.



NOTE: Installation drawing shown with Next Generation fluid end geometry. Additional drawings are available from engineering per application.

STANDARD FEATURES

- 14" stroke maximizing flow at higher pressures
- Rated at 7,500 psi, and with a five-year-warranty on the power end, makes the PZ 2400 an ideal choice for both superspec rigs and rigs requiring upgrades
- Standard Redline™ expendables, meaning fewer repairs and more predictable maintenance intervals
- Patented, severe duty, Y-Shaped fluid modules
- High-strength cast power frame, eccentric connecting rods and crossheads
- Full roller bearing construction
- Heat-treated alloy steel, doublehelical AGMA drive gears
- Double extended jackshaft for mounting sheaves or sprockets
- Replaceable bronze crosshead slides
- Fabricated, log-style suction manifold

OPTIONAL FEATURES

- Steel transportation and placement skid (for pump only)
- Larger maintenance skid with nonslip decking
- Centrifugal suction charging pump
- Oil pump assembly for power end lubrication
- Suction stabilizer
- Discharge dampener
- Quick change liner retention and rod systems
- Clear Lexan covers on hood inspection ports
- Custom packaging
- Electrical Top Drive Gearbox
- Pressurized Lubrication System for Gearbox