

CONSUMABLES



FRAC & WELL SERVICE PUMP VALVES & SEATS

CONSUMABLES MANUFACTURED WITH FIELD-PROVEN TECHNOLOGY

GD Energy Products Redline valves and seats are designed for maximum performance and reliability. Our full-open, bonded design provides optimal flow efficiency and maximum sealing. Featuring a proprietary urethane blend, our P-4 and P-5 valve is a field-proven performer in temperatures up to 250°F.

Manufactured in the USA, GD Energy Products Redline valves have outperformed the competition in numerous basins. Compatible with all common frac water chemistries, our deep groove, two-piece fused-body valve design contains an elastomer for improved durability and sealing life.

Our full line of frac and well service pump consumables serve as the perfect complement to our performance-proven pumps. With our “ready inventory” promise, our Redline consumables products are readily available and offer unparalleled quality and reliability.

FEATURES & BENEFITS

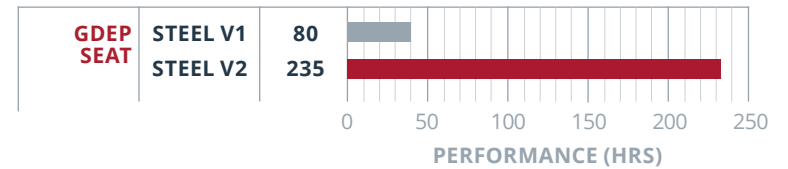
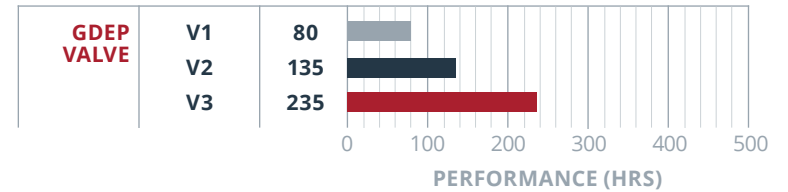
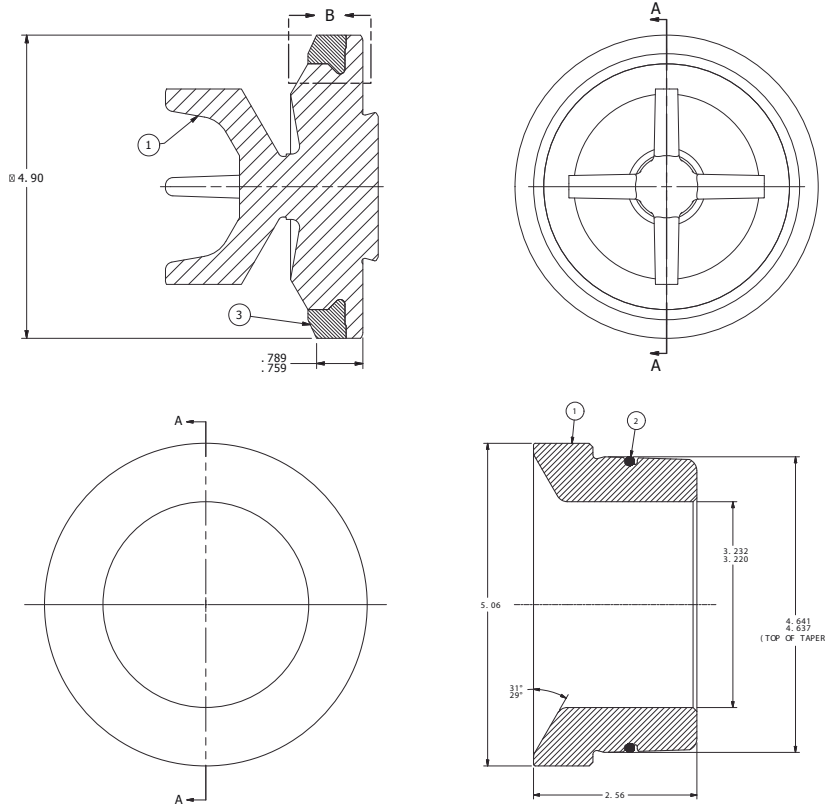
- Rated for pressures up to 15000 psi and 250°F
- Full open design for max flow efficiency
- Compatible with all common frac water chemistries
- Optimized metallurgy for abraision and chemical resistance
- Available in P-4 and P-5 sizes
- Manufactured in USA



FRAC & WELL SERVICE PUMP VALVES & SEATS

CONSUMABLES MANUFACTURED WITH FIELD-PROVEN TECHNOLOGY

SPECIFICATIONS



P-4 VALVE ASSEMBLY #'S		P-5 VALVE ASSEMBLY #'S	
Valve	PP1210148	Valve	PP1198764
Seat	PP1198326	Seat	PP1198682
Spring	918VP023	Spring	918PN05